



Gateway Decorative Artists

Greater St. Louis Chapter
www.gatewaydecorativeartists.com

National Society of Decorative Painters
www.decorativepainters.org

Volume 30 Issue 1

NEWSLETTER

January/February 2003

Chapter Meeting

Program:

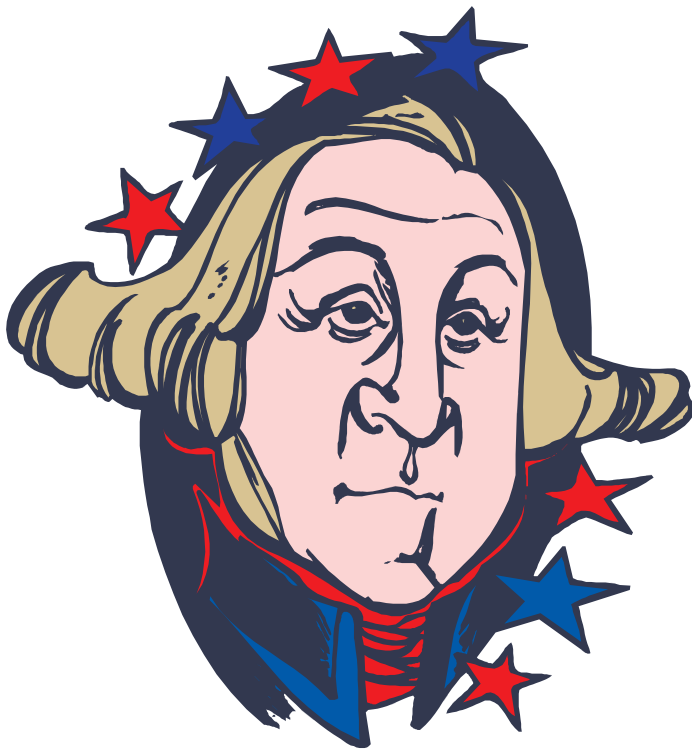
Paint with the Presidents Past, Present & Future

We will be celebrating President's Day with a day of painting with our own Presidents.

Bring your regular painting supplies. The presidents will provide surfaces and paint. Surfaces will not cost over \$5.00

When:
February 10, 2003

Where:
Carrollton Community Center

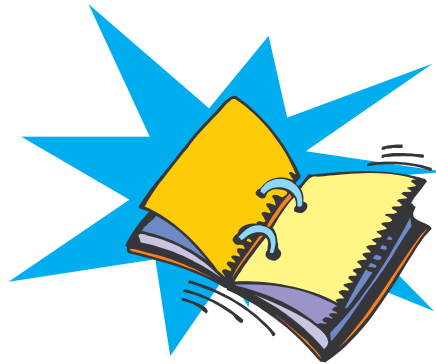


Remember, refreshments will be served from 12:30 to 1:00. Please plan on arriving at the meeting a little early to nibble some treats and to socialize with your painting friends!

Mark Your Calendar 2003 Scheduled Events

February 9	General Meeting
February 24 - March 1	Las Vegas Mini Convention
March 7-9	Mary Kingslan Gibilisco CDA Seminar
April 13	General Meeting
June 1	General Meeting
June 9-15	Indianapolis Convention
August 8-10	Rosemary West CDA Seminar
September 9-13	Tole Country (Oklahoma Mini Convention)
September 14	General Meeting
October 11	Sharing Workshop
November 9	General Meeting
November 14 & 15	6th Annual Artists Holiday Boutique

**All events will be held at the
Carrollton Community
Center
unless noted otherwise.**



Advertising Rates

Full Page 8 ¼" x 10 ¾" \$10.50/issue or \$50.00/year
½ Page 8 ¼" x 5 ¼" \$8.00/issue or \$37.00/year
¼ Page 4" x 5 ¼" \$5.50/issue or \$25.00/year
1/8 Page 4" x 2 ½" \$3.00/issue or \$12.50/year

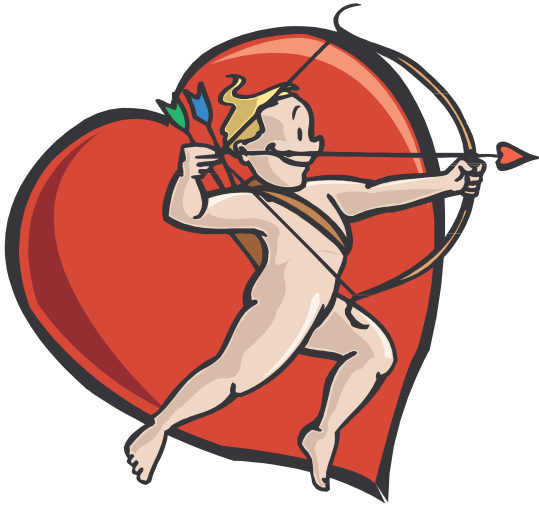
All ads must be paid for in advance of publication.

Ads should be camera ready, which means typed, artwork completed and ready to print. Remember to keep any border trims to the inside of the measurements listed above.

Non-members should add 25% to the above rates.
Personal messages are \$.05/word.

Dear Gateway Members,

I'd like to thank you again for allowing me the opportunity to serve as your president. I'm really looking forward to working with you this year. I'm always available to hear your concerns and comments, and even though I won't always have an answer for you, I'll know where to find it. The board you elected has some fantastic ideas and a wealth of experience. We've gotten off to a great start by setting goals for our New Location Committee, taking a hard look at our budget, and organizing committees and special events. Please keep communication open between you and the board. One way we will be getting your input this year is through surveys. Please help us by filling them out. We're all here to serve you. For us to make good decisions on your behalf, we need to know how you feel about things.



Some events to keep in mind this spring are: Painting with the Presidents at the February meeting, the Working Women's Survival Show (Feb. 21, 22, & 23), Mary Kingslan-Gibilisco Seminar (March 7, 8, & 9), and retreat project selection. Also, don't forget that you can begin registration for the Indianapolis convention on February 17th. There are new plans for this year so be sure to attend the February meeting to hear about them.

Thanks and Happy Valentine's Day,

Allison

Sunday, February 9th Agenda

President's Report
Vice-President's Report
Program report
Membership Report
Board Report
Other Business

2003 Charity Information

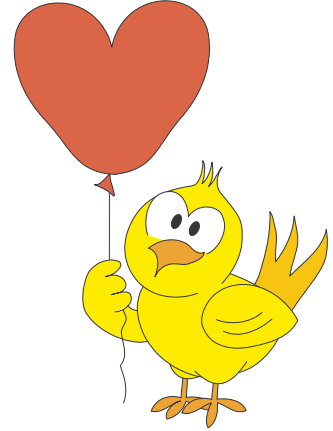
Because we all responded so well in the past and seem to enjoy helping children so much I've chosen to sponsor Shriner's Hospital this year as our main charity. Children of all ages are long-term patients at the hospital. They are waiting for surgeries, are cancer patients, burn victims and accident victims, just to name a few.

With Valentine's Day following our meeting I'm asking you to bring "Gift Bags" of goodies to put a smile on a child's face. Remember these are children of all ages not just little ones. Try to include something to help pass the time, crayons, color books, reading material, drawing supplies and maybe a small stuffed animal. Please do not include any sweets. They would have to be taken away from some children. These are only some ideas, be creative.

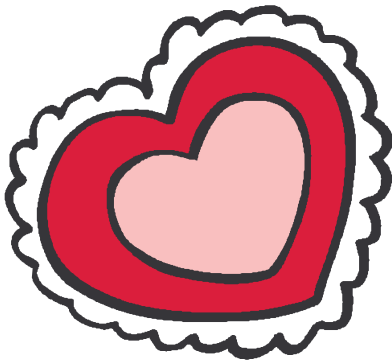
Throughout the year I'll be asking for stuffed animals and art supplies, so be on the lookout for those bargains! You do not have to spend a lot but stuffed animals do have to be new.

Don't think we're giving up on the Memory Boxes we're not. We still have 340 Memory Boxes left. We will have some available at the meeting. So please keep painting those boxes.

There is one more project I would like to do but I need your input. We'll discuss this at meeting.



Retreat 2003 Oct. 3,4 & 5 Coming Home!



I hope all of you are looking forward to Retreat this year. We will be at the Holiday Inn at Butler Hill Road in South County.

Teacher's letters will be given out at the meeting. If you've been thinking about teaching this is a good place to start. I will have extra forms at the meeting, call me if you want one sent and your not listed as a teacher. We're going to try shorter 3-hour mini classes on Sunday morning so we're not all so rushed. Keep this in mind when designing your projects. Another change will be in class sizes. All classes will be limited to 15 students. If you want that special class you will have to register early to hold your space.

I'm looking forward to being your VP this year; I need a lot of help from everyone. Please sign up for a committee at the meeting.

Thanks, Ellen

**GATEWAY DECORATIVE ARTISTS
CHAPTER MEETING MINUTES
December 8, 2002**

The Gateway Decorative Artists meeting was held on December 8, 2002 at the St. Charles Golf Club. All Board members were present with the exception of Janie Parisi. President, Vada Galvan called the meeting to order at 1:45 p.m. The meeting opened with a prayer. Members and guests were welcomed. Carolyn Bacon presided over the installation of officers for 2003. Ellen Rohne presented Toni Dosser with the Gold Brush Award. The business meeting was followed by entertainment, an ornament exchange, and Secret Pal exchanges.

Respectfully submitted,

Donna Wessel
Recording Secretary

**GATEWAY DECORATIVE ARTISTS
CHAPTER MEETING MINUTES
November 10, 2002**

The Gateway Decorative Artists meeting was held on November 10, 2002 at the Bridgeton Community Center. All Board members were present except Treasurer, Janie Parisi. President, Vada Galvan, called the meeting to order at 1:03 p.m. Vada welcomed all members and guests, which included several males and one youngster, Clara Wolf. Jeanne Abraham gave the invocation. Vada asked for approval of the September minutes as published in the newsletter. Jeanne Abraham made the motion to accept; seconded by Michelle Kasban; all in favor; motion passed. Vada then asked for a show of hands to accept the Treasurer's report as published in the newsletter. The report was accepted as filed.

Gerry Klein, Chairman of the Nominating Committee was then given the floor to announce the slate of candidates running for office. She then called for any additional nominations from the floor. There being no additional nominations, eligible voting members were asked to cast their ballots for the following nominees:

President	Allison Bacon
Vice President	Ellen Rohne
Recording Secretary	Donna Wessel
Treasurer	Janie Parisi
Program Chairman	Toni Dosser/Gloria Falk
Membership Chairman	Cindy Hicks
Newsletter Editor	Suzanne Glidden/Tracy Kocher

The ballots were then collected, tabulated and the winners were announced. The 2003 Program Chairman will be Toni Dosser and the Newsletter Editor will be Suzanne Glidden.

Joanne Goers, who is also a member of the Fort Worth Decorative Painters Chapter, asked for donations for their annual fundraiser. The proceeds would benefit a six-year-old girl with a brain tumor. The grand prize was a hand painted game chest filled with hand painted games.

Shirley Schmidt, who is a nurse, had been giving flu shots at another location earlier this day. She had a quantity of vaccine left over and offered shots to the membership for \$15. A number

of members took advantage of this offer. Shirley was thanked for making this service available to us.

Vada announced that we would be having a pocket calendar/directory for 2003. Members were told we were going to solicit line item ads at \$10 each from businesses and organizations that members could patronize in the coming year. This would be a way for the chapter to subsidize the printing cost of the directory. The deadline for these line item ads (with their accompanying check in payment) is December 8 (at the Christmas party).

Vada brought up the special chapter's event that will be a new feature at the 2003 National Convention in Indianapolis. It will be a chapter art show and silent auction. It will not be a juried competition, but People's Choice awards will be presented. The silent auction is a fund-raising opportunity for affiliated SDP chapters. Vada asked for a motion that Gateway would participate in the silent auction. A motion was made from the floor and seconded that Gateway Chapter would submit at least one or more items for the silent auction event that will take place at the National Convention in Indianapolis in 2003. The motion passed. Mary Jane Jett agreed to be this activity's coordinator with Allison Bacon assisting.

Cindy Connoley then took the floor to report on this year's retreat. She thanked all of her committee chairpersons for their hard work as well as everyone who had attended this year. She had prepared a retreat survey for members to complete and return to her. She then announced that as of this date she had mailed a total of 495 memory boxes with 7 more still waiting to be shipped. The 502 boxes in 2002 combined with the 499 shipped in 2001 gives us a two-year total of 1001. She continued with a recap of our accomplishments during her two years as Vice President: 80 Easter baskets; successful retreats in both 2001 and 2002; school supplies and other donations for Bridgeway; raising over \$2000 to fund the memory box program; and 1001 memory boxes shipped. She offered a thank you to Vada and Gloria for mentoring her during the last two years. Everyone can congratulate themselves for their hard work and generosity.

Annette Dozier said there were still openings in Barb Ogden's January workshop. We have pictures of projects for the Mary Ann Gibilisco seminar in March. We also have pictures from Rosemary West and Maureen McNaughton has been signed for a seminar in 2005. November 29 is the deadline for Christmas Party reservations. The cost is \$15 for members and \$17 for guests. An unwrapped ornament exchange is planned for anyone wanting to participate.

Debbie Christenson has prepared a MITI that will be a wood piece in a pattern packet for WWSS. Help is still needed for WWSS and there is a sign up sheet for anyone who has not yet volunteered to participate. Ellen Rohne had brought in some items to showcase the color scheme of the bed/sitting room. Bonnie Stout is in charge of the library/den and she says she already has a savanna style floor cloth for this "room." Vada is in charge of the patio/garden room and the color scheme here is yellow and blue and wicker. Members should contact the room coordinator direct if they have items for display in these vignettes.

Ellen Rohne is collecting Gold Brush nomination forms.

Cheryll announced 2003 dues need to be paid by the Christmas party if you want to be included in the new calendar/directory. However, please remember that your check will be held for deposit until after the first of the year. There were 66 members present and 15 guests. Marilyn Hartnett, Kay Waldron and Louise Kern won member attendance prizes. Three guests--Ed, Susan and Gaylord--also won attendance prizes. There was also a table of older donated books, magazines and wood pieces free for the taking.

Joycelynn Smutz suffered a stroke in September. At present, she is unable to communicate and requires round-the-clock help. Please remember her in your prayers.

Today's program following the meeting was an auction of items donated by members of both Gateway and Lincoln Trails. There were a wide variety of beautifully painted pieces on display. The bidding was fun, lively and sometimes fierce. The proceeds will be used for WWSS expenses. Tracy Kocher offered members the option of paying for their purchases through Mastercard. Once again, Mary Jo Kumer graciously consented to be our auctioneer extraordinaire.

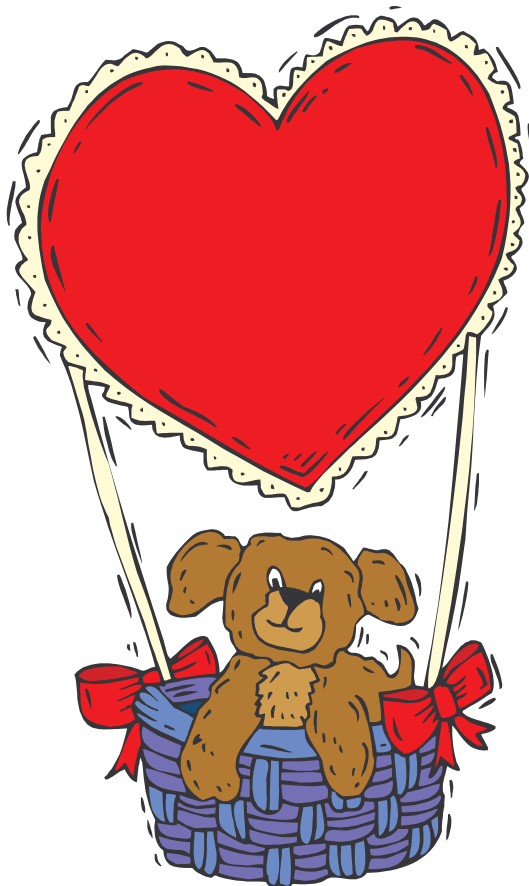
With no further business to conduct, Mary Jo Kumer made the motion to adjourn at 1:48 p.m. Judy Sloan seconded the motion. The auction began following a short intermission.

Respectfully submitted,

Donna Wessel
Recording Secretary

Ladies Sitting Room, WWSS Ellen Rohne (636) 240-1684

We've got our walls built and painted; the wallpaper is ready to go. We've been to Sunshine Draperies and chosen some pieces to decorate our "room" unfortunately those pieces may be gone by the show date. So here is what we



are working with, the wallpaper is a soft sage green; the painted areas are a cream background with a tan faux finish. We have the furniture including a rocker, wicker footstool, side table, secretary and chair, a table with a mirror to hang and a small hutch type cabinet with open shelves. These are all white or white washed. The color scheme consists of Lt. Rose to Burgundy, Med. Blue to Purple, Creams, Tans and Sage Greens.

We need wall hangings to place on our blank walls; I'd like to display a tea set and some small artwork to place on the hutch, all within our color scheme. You've all received fabric and a list of paint colors. Look around the house and dig into those closets and storage areas see if you can't find something we can use.

Give me a call if you can help us out. We'll need you to bring it to the Feb. Meeting. You can have these items for sale if you wish. Give

me a call if you can help us out.

Thanks, Ellen

FOR GREAT QUALITY
SERVICE & SELECTION SHOP...



\$10
OFF ANY
FRAMING AND
MATTING
PURCHASE 11X14
OR LARGER
(Limit one coupon
per purchase)
EXPIRES: 03-28-03

FINE ART SUPPLIES
OIL PAINTS - CANVAS
BRUSHES - BOOKS
ACRYLIC PAINTS
ACCENT - DELTA - AMERICANA
WOOD TURNINGS
SCRAPBOOKING SUPPLIES
RUBBER STAMPING SUPPLIES
STENCILING - QUILTING
DMC EMBROIDERY THREAD
COUNTED CROSS-STITCH
PATTERNS & SEWING FABRICS
CANDLE MAKING SUPPLIES
CUSTOM FRAMING & MATTING
BASKET MAKING SUPPLIES
QUALITY HANDMADE CRAFTS & GIFTS

25%
OFF
ANY
PURCHASE
(Limit one
coupon per
purchase)
EXPIRES: 03-28-03

**IF YOU NEED SOMETHING SPECIAL
YOU CAN NOT SEEM TO FIND.
CALL ME AND I WILL DELIVER IT
TO THE NEXT MEETING.**

HOURS: MONDAY - SATURDAY 9 A.M. - 5 P.M.

OWNER: TRACY KOCHER

102 S. JACKSON ST.
FARMINGTON, MO 63640

(573) 756-8060

LOCATED IN BEAUTIFUL DOWNTOWN FARMINGTON

2002 Boutique Final Report

Income:	2001 Remainder	239.00	
	Registration fees	500.00	
	Receipts	<u>13383.52</u>	
Total			+14122.52
Expenses:	Paper for printing	66.58	
	Stamps for mailing	125.81	
	Rocks (throwing flyers)	9.31	
	Signs	376.74	
	Radio Advertisement	49.00	
	Wrapping paper	5.96	
	Taxes paid	913.56	
	Paid to Charity	1250.00	
	Paid to participants	<u>11257.05</u>	
Total			-14054.01
Difference			+68.51

Note: The \$68.51 excess will remain in the treasury to start out the Boutique for 2003. Vantage Homes donated \$250 to our charity. Cindy Connoley saved us a lot of money on printing again this year.

Gloria Falk
2002 Boutique Chairman

2002 Web Site Final Report

Income:	Artists Club checks	+35.57	
Expense:	11 Net server (host)	<u>-83.88</u>	
Difference:			-48.31

Note:

On April 2, 2001 we contracted with 11 Net for Web hosting the Gateway Decorative Artists site.

Domain Name @ \$32 a year (2 year) =	64.00
1 year web hosting service @ 6.99 a month =	<u>83.88</u>
For a total charge of:	147.88

This averages out to a cost of \$115.88 a year. This charge is then offset by income from the Artists Club. We have an affiliate program with The Artist Club. We receive credits for purchases sent through our website. Credits are sent out quarterly to Suzanne and she forwards the check on to the Treasurer.

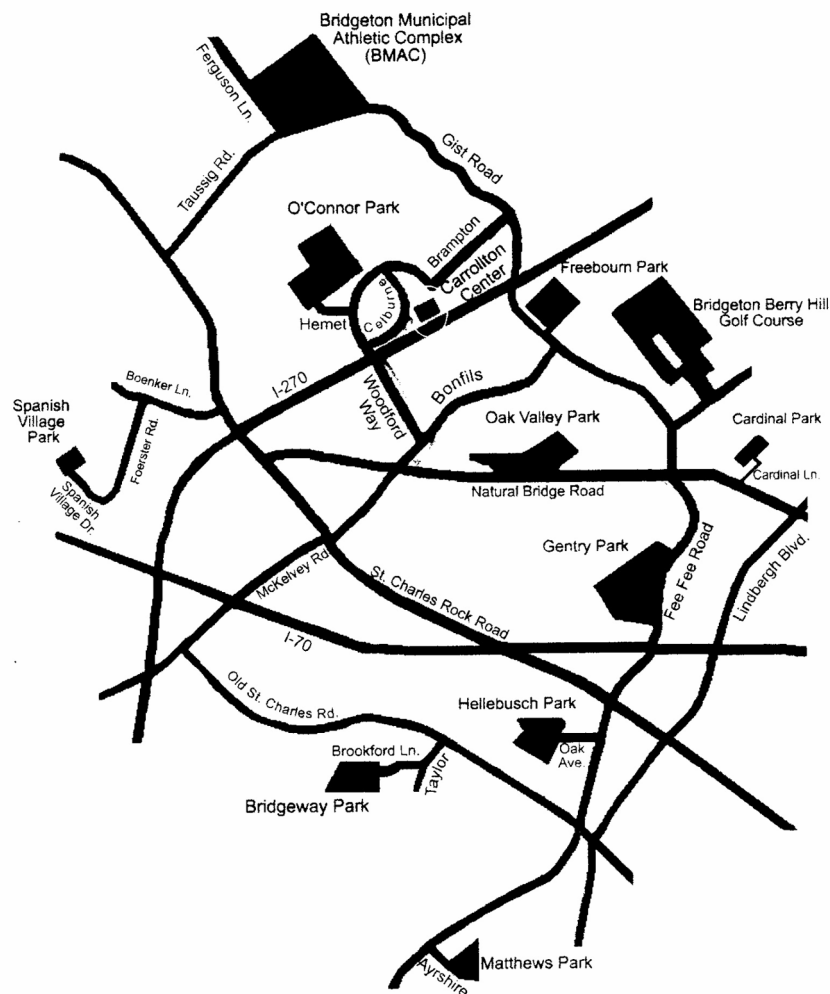
BizLand acquired 11 Net shared Web hosting business, as of June 24, 2002. So as of 6-24-2002 (6:30p.m. EST) our server is BizLand.

Driving Directions to Carrollton Community Center

From: Bridgeton Community Center, 4201 Fee Fee Road (Gentry Park)
To: Bridgeton Carrollton Center, 12561 Celburne Drive

- North on Fee Fee Road to Natural Bridge (stoplight)
- Turn Left (west) onto Natural Bridge Road
- Turn Right (north) onto Bonfils Drive (first stoplight)
- Turn Left (west) onto Woodford Way (first stop sign)
- Turn Right (north) onto Celburne Drive (second stop sign or first stop sign immediately after I-270 overpass)
- Carrollton Center will be on the right-hand side at the bottom of the hill

LOCATOR MAP



2002 Gold Brush Award

This years Gold Brush Award recipient has been an asset to the Gateway Chapter and National for many, many years. Giving her time and talents without any thought of personal gain. She deeply cares about our Chapter, our members, National Society and our industry as a whole.

She has served our Chapter as President, has held most board positions and has served on more committees than you can count!

Working with manufacturers, publishers and shops, she is constantly promoting Decorative Painting. She sets an example for all of us to follow.

She is our "Show Me St. Louis" representative.



**I am very proud to announce the 2002 Gold Brush Award Recipient:
*Toni Dosser***

Gold Brush Award Recipients

1987	Joycelynn Smutz
1988	Judi Krause
1989	Bonnie Stout
1990	Gerry Klein
1991	Bobbie Gray
1992	Arlene Siebert
1993	Barb Ogden
1994	Carolyn Bacon
1995	Jeanne Abraham
1996	Annette Dozier
1997	Gloria Falk
1998	Jan Rosenberg
1999	Mary Jane Jett
2000	Ellen Rohne
2001	Ruth Ann Thompson
2002	Toni Dosser

Membership Information

Would you save your handled shopping bags for the boutique?* We will be glad to collect them at every meeting.

Thank you – Gloria Falk

*Example: from JCPenney; Famous; Dillards; Hallmark; and any other places as well.

Letter from the Women's Center

Dec. 5, 2002

Dear Gloria and Gateway Decorative Artists,
Thank you very much for your generous donation of \$1,250.00. We appreciate your thoughtfulness and support.

Sincerely,
The Women's Center Staff

Keep in Your Thoughts

Our thoughts and prayers go to Pat Weisbrod. Pat's mother passed away and Pat herself had surgery.

Keep in Your Thoughts

Our thoughts and prayers go to Debbie Christenson. Debbie's mother passed away.

Our sympathies go out to Joylelynn's family. Joycelynn passed away on the 22nd of January.

Our Deepest Sympathy

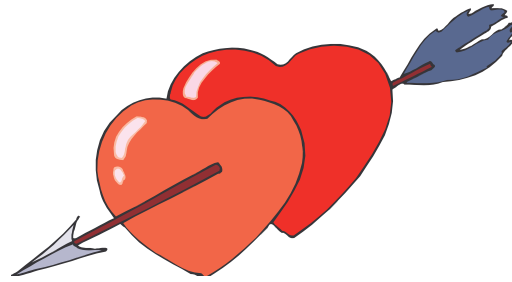
The tole and decorative painting community lost a beloved member, Debbie Toews, on January 8. We offer our condolences to her friends and family. She will remain in our hearts for many years to come.

To contribute to the Debbie Toews Memorial Fund,
please send donations to:

**DEBBIE TOEWS MEMORIAL FUND
5236 S. Bliss Middleton**

Happy Birthday!!

Ellen Rohne 1/1
Gerry Klein 1/3
Darlene Pratte 1/5
Judy Dodson 1/7
Ruth Paddock 1/7
Annette Sullivan 1/17
Nancy Wymer 1/19
Cheryll Wilburn 1/24
Maura Gallen 1/26
Kay Vuichard 1/29
Mary Haynes 2/7
Donna Wessel 2/7
Joyce Miller 2/10
Karen Bourbon 2/15
Mary Messmer 2/28



Member News

Louise Kern, Julia Lamborn, and Jean Rogenhofer have begun their second year of volunteering at the Women's Center in St. Charles and from time to time, other friends join in as well. Once a month they present an art project for the women in the residence. When the projects are finished, the women get to keep what they have made. The women who are at the center are in hiding and escaping from domestic violence situations. While trying to change their lives and begin anew in a safe environment, they are especially grateful for a brief respite of visiting, painting, and crafting. As is often true of volunteer pursuits, the volunteers get as much, if not more, out of the helping than those who are being helped.

Congratulations to Mary Messmer!

She is the proud great-grandmother of a baby girl. Rhiannon Grace was born on Monday, January 13th. 6lb. 10oz. 18 inches long.

It's a Girl!

To anyone who has an item to display at the Working Women's Survival Show:

Please bring your item to the meeting or contact me or anyone on the WWSS committee. Don't forget to attach a label with your name on the piece and have it packed ready to transport.

Thank you!
- Jan Rosenburg.

Seminar Information

All Seminars and Sharing Workshops are held at the Carrollton Community Center from 9:00-5:00

To expedite registrations during the Chapter meetings please follow the following procedure:

Forms for registration are printed in the newsletter and will be available on the registration table during the meeting. Complete a form for each Sharing Workshop or Seminar. Total the cost of the classes, write a check attaching it to your forms with a staple, place the completed forms with check attached in the box provided. **YOU DO NOT NEED TO STAND IN LINE. REGISTRATIONS WILL BE LOGGED IN LATER.**

Please register before and after the meeting only. Registrations will not be taken during the meeting. If you have all the necessary forms and check ready before coming to the meeting the process should go very quickly and painless for you. If you need more than the form provided in the newsletter you can make copies or pick up several forms at the meeting for you to have on hand at home.

Thank you for your help!
Toni Dosser

Cost per day for the Seminars is \$35. Cost per day for the Sharing Workshops is \$15

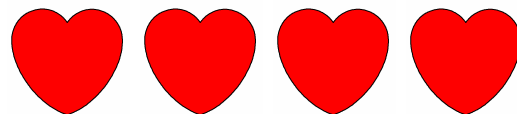
Make checks payable to Gateway Decorative Artists for the class. Checks for surfaces should be made out to the teacher.

Seminar and Sharing Workshop Policies

- A non-refundable, one-day deposit will be required to register for one or more days of a seminar. Balance is due at the chapter meeting prior to the Seminar date.
- Program Chairman should be notified of any cancellations, and will provide you with a waiting list, if available.
- It is your responsibility to sell your Seminar or Sharing Workshop space and surfaces.
- Failure of member to pay for remainder of Seminar and surface fee ordered, will result in loss of all membership privileges.

All forms should be mailed/given to:

Toni Dosser
1426 Old Farm Dr.
St. Louis, MO 63146



**2003 Board of Directors
Gateway Decorative Artists of Greater St. Louis**

President

Allison Bacon
314-579-9493

First Vice-President

Ellen Rohne
636-240-1684

Treasurer

Janie Parisi
636-463-1287

Membership Chairman

Cindy Hicks
314-298-8043

Recording Secretary

Donna Wessel
314-428-8226

Program Chairman

Toni Dosser
314-434-9378

Newsletter Editor

Suzanne Glidden
636-825-3348

Parliamentarian

Carolyn Dawson
618-259-0990

Publicity Chair

Gloria Falk
636-561-6623

Refreshments

Tracy Kocher
573-760-1698

Area Representatives

Arlene Markland (South County) 636-677-4274
Lida Gillham (Illinois) 618-656-9294
Julia Lamborn (North County) 314-731-3561
Maureen Wasserman (West County) 636-227-2843

The patterns for the Mary Kingslan Gibilisco seminar will be at the meeting. If you are unable to attend then please try and make arrangements to have someone pick them up. We do have a few openings for the seminar if you would still like to sign up. This is a unique experience to get the chance to paint with someone like Mary.

THANK YOU NOTE

I was so surprised when I heard my name announced as the recipient of the Gold Brush award. I deeply appreciate this honor and probably for one of the few times in my life I truly am at a loss for words.

- Toni Dosser

2 0 0 3 M E M B E R S H I P F O R M

1 MEMBER INFORMATION

Name and address as it should appear on the mailing label

Name _____ Membership # (if renewal) _____
 *Household Member Name _____ Membership # (if renewal) _____
 Business Name (if joining as a Business member) _____
 Mailing Address _____
 City _____ State _____
 Country _____ Zip _____
 E-mail _____ Website _____
 Phone () _____ Fax () _____
 Are you an independent retailer or operate a home studio? yes no

2 MEMBERSHIP CATEGORIES (U.S. funds, includes postal fees)

U.S.
 \$35 Individual (\$40 after 12/1/02)
 \$65 Business (\$70 after 12/1/02)
NON-U.S. (U.S. FUNDS)
 \$65 Individual (\$70 after 12/1/02)
 \$95 Business (\$100 after 12/1/02)

CANADA (U.S. FUNDS)
 \$50 Individual (\$55 after 12/1/02)
 \$80 Business (\$85 after 12/1/02)

ANY COUNTRY (U.S. FUNDS)
 \$15 Household

IMPORTANT

- Membership year is Jan. 1 to Dec. 31, 2003.
- Dues postmarked after Dec. 1, 2002 require an additional \$5 postage/handling fee. This does not apply to never-before members or those who have not been a member since 2000.

*Household membership is for a member sharing the same address as the Individual or Business member. Application must accompany the membership or renewal form of the Individual or Business member.

3 BUSINESS & TEACHER ONLINE RESOURCE CATEGORIES

BUSINESS MEMBERS ONLY	INDIVIDUAL MEMBERS ONLY
<input checked="" type="checkbox"/> Business members, CHECK all boxes that apply for the <i>Business & Teacher Online Resource</i>. Listings are FREE with your business membership. <input type="checkbox"/> Author <input type="checkbox"/> Distributor/Wholesaler <input type="checkbox"/> Home Studio <input type="checkbox"/> Manufacturer/Importer <input type="checkbox"/> Publisher	<input checked="" type="checkbox"/> Individuals CHECK all boxes that apply. Listings are \$10 each. <input type="checkbox"/> Author <input type="checkbox"/> Teacher <input type="checkbox"/> Travel Teacher <input type="checkbox"/> My design and/or painting skills are for hire.
<input type="checkbox"/> Retailer <input type="checkbox"/> Teacher <input type="checkbox"/> Travel Teacher <input type="checkbox"/> Other	

4 PAYMENT

Make checks payable to: SDP, 393 N. McLean Blvd., Wichita, KS 67203-5968.

For faster service, use MasterCard or VISA and call (316) 269-9300, ext. 105 or fax application to: (316) 269-9191

To join online, visit our website: www.decorativepainters.org

VISA MasterCard Exp. date _____ Phone _____
 Card number _____ Signature _____
 Yes! This is a Gift Membership from _____ Memb.# _____

THE DECORATIVE PAINTER is published bimonthly by the Society of Decorative Painters, 393 N. McLean Blvd., Wichita, KS 67203-5968. Periodicals postage rates are paid at Wichita, KS. \$20 of your dues is for THE DECORATIVE PAINTER.

DUES POSTMARKED AFTER DEC. 1, 2002, REQUIRE AN ADDITIONAL \$5 POSTAGE/HANDLING FEE (DOES NOT APPLY TO NEW MEMBERS).

2003 Gateway Decorative Artists	
Greater St. Louis Chapter of The Society of Decorative Painters	
Name	_____
Address	_____
City, State, Zip	_____
Phone Number	() _____
Email Address	_____
Would you prefer to receive your newsletter via the website? yes [] no [] (http://www.gatewaydecorativeartists.com)	
Birth Month & Day	_____
National Membership #	_____
Certification: MDA [] CDA [] New Member [] Renewal []	
Check one or more: Individual Member [] Teacher [] Business Member []	
Name of shop is status is Teacher: _____	
Please indicate your preferences regarding inclusion of your name should the Chapter decide to sell our mailing list to painting related companies to raise funds for the Chapter: Acceptable [] Not Acceptable [] (please check one)	
Annual dues are \$20 per year, payable in advance. Please indicate which year your annual dues represent: 2003 []	
Please make check payable to: Gateway Decorative Artists	
Mail to:	Cindy Hicks 11779 Unity Drive Bridgeton, MO. 63044
If you have questions:	Cindy Hicks HicksCin@aol.com



Your national dues need to go directly to SDP.

When mailing your membership dues to Gateway, you should include a copy of your national membership card.

From Your Newsletter Editor:

**Suzanne Glidden
632 I Park Commons Court
St. Louis, MO 63088**

artdzyrn@hotmail.com



To:

Remember to Mark Your Calendars!

February 24 – March 1
Las Vegas Mini Convention

March 7 – 9
Mary Kingslan Gibilisco CDA Seminar