



Gateway Decorative Artists

Greater St. Louis Chapter

www.gatewaydecorativeartists.com

National Society of Decorative Painters

www.decorativepainters.org

Volume 30 Issue 5

NEWSLETTER

October/November/December 2003



Chapter Meeting

Program:

Etched Ornament

Paint an etched ornament
with Mary Jane Jett

Bring your regular
painting supplies.

When:

November 9, 2003

Where:

**Carrollton Community
Center**

~ DON'T FORGET ~

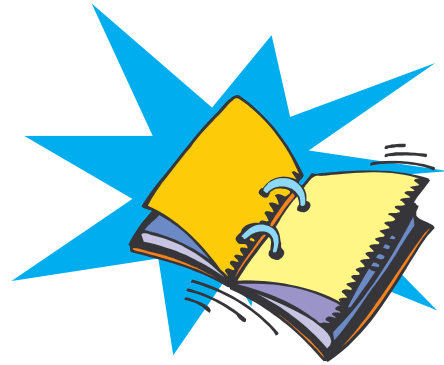
Shop ArtistClub.com from our website.

Every time you enter AritstClub.com from www.gatewaydecorativeartists.com,
the Chapter receives \$\$\$ from the sale!

MARK YOUR CALENDARS!
2003 Scheduled Events

| | |
|------------------|---|
| November 9 | General Meeting |
| November 14 & 15 | 6th Annual Artists Holiday Boutique |
| December 7 | Annual Gateway Decorative Artists Christmas Party |

All events will be held at the Carrollton Community Center unless noted otherwise.



ADVERTISING RATES

- Full Page 8 ¼" x 10 ¾" \$10.50/issue or \$50.00/year
- ½ Page 8 ¼" x 5 ¼" \$8.00/issue or \$37.00/year
- ¼ Page 4" x 5 ¼" \$5.50/issue or \$25.00/year
- 1/8 Page 4" x 2 ½" \$3.00/issue or \$12.50/year

All ads must be paid for in advance of publication.

Ads should be camera ready, which means typed, artwork completed and ready to print. Remember to keep any border trims to the inside of the measurements listed above.

Non-members should add 25% to the above rates.
Personal messages are \$.05/word.

*******2004 DUES NOTICE*******

It's that time of year, again, for the 2004 Gateway Decorative Artists Dues. Please complete the form included in this newsletter and, with your dues (\$20.00), provide to Cindy K. Hicks (Membership Chair) for your 2004 membership. We need to have all of the information and membership dues by the 31st of December in order to get our directory up-to-date for printing.

PRESIDENT'S LETTER

Dear Gateway Chapter Members,

This fall is going to be another fun, but busy season for Gateway. Boutique and the Christmas party are just around the corner. The November meeting will be business oriented. We will hold our elections and have discussion and voting on by-laws. Please plan on attending this important meeting. The course of our chapter is decided through the discussions and elections. Everyone needs to be heard. Please read the by-law recommendations and come with an open mind ready to discuss. I'd like to thank the by-law committee (Judy Dodson, Toni Dosser, Mary Jane Jett, Gerry Klein, Jan Rosenburg, and Annette Sullivan) for studying our by-laws and suggesting changes. Also, our slate of officers looks great. We've got some hardworking people



who've volunteered to work for us. I'd like to thank Maureen Wasserman and Mary Jo Kumer for their efforts at

gathering a slate of officers for next year. Both the by-laws and the nomination committees face many challenges and I feel confident that they have risen to the obstacles. Again, please plan to attend the November meeting so that your opinions can be heard. However, we can't wear ourselves out with too much talking because we will have Mary Jane Jett for our paint-in. If I can get sappy for a minute, even if we don't agree on some of the issues that get brought up, the common denominator is that we are all beautiful, creative people. So ending with our paint-in is a good example of how we can overcome differences of opinion through decorative painting.

Wow, what a great Retreat we just had! Ellen and her committees sure worked hard to organize such a fun event for us. Thanks to all of the committee members, who brought us a "Touch of Class". Classes were relaxing, educational, and creative.



Make-It-and-Take-Its were a great way to unwind. The hotel was comfortable and accommodating. Our very own theatre company, including Linda Nelson, Annette Dozier, and so many more provided a humorous look into the world of the art studio. The weekend was an all around success.

The September meeting was so different and fun. All of the tables were beautifully set. Thanks to Mary Jane Jett and Mary McDevitt for providing a tasty lunch. Our silent auction raised \$600 for the general treasury. I really appreciate all who donated an item to the event. I'd like to recognize Suzanne Glidden, Patty Bilyeu, Mary Jo Kumer, and Donna Wessel, who jumped in to help me with the actual mechanics of the auction. I love it when people see a job needs to be done and helps! Also, thanks to Annette Sullivan for stepping in to offer the Learn to Paint project for us to enjoy. I saw some really pretty gift bags. Our Show and Tell table is taking off! It is an inspiration to see all the beautiful work we can do. Finally, the suitcases were just incredible. Great work painters!

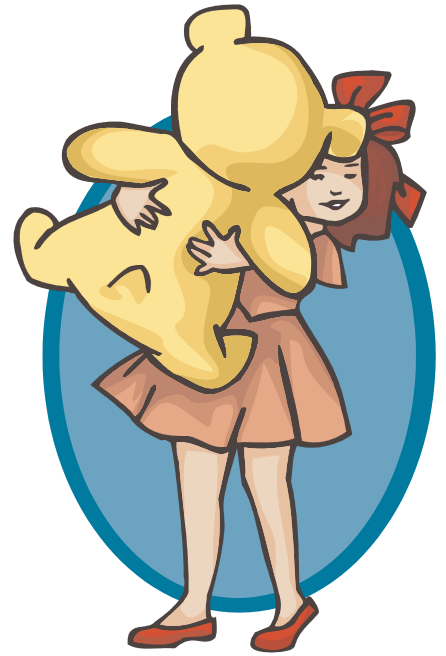
I can't wait to see you all again in November.
~Allison

FROM THE DESK OF THE VICE PRESIDENT

Charity News...

Thank you, Thank you, Thank you... WE collected 101 suitcases for Foster Children!!! We also collected 40 Memory Boxes at the last meeting. Everyone has been so generous and supportive of our Charity Projects this year. Children all over the Metro area will be delighted with a suitcase of their own. What an outstanding group of women we are!!

For the Nov. Meeting I'm asking everyone to bring a Teddy Bear for Shriner's Hospital. Please don't spend more than \$8 on a bear. Any extras will go to "Our Little Haven." Don't forget to return your Memory Boxes. The families who will receive them will have a tough time dealing with their loss over the Holidays. Let's keep them in our prayers.



Retreat News...

If you weren't there this year you missed a wonderful, fun weekend. Everyone had a great time. It will be hard to beat next year. We had hand painted nametags, Baskets of paint supplies on the tables, each of us were given a hand painted wine glass with a charm. I think we finally have used all the "Ice Cream Cones." Goodie bags were handed out differently this year and I think everyone enjoyed their treats early Friday. We also handed out Attendance prizes differently this year. Which took less time than usual. Most of the classes were full; we couldn't have squeezed another artist in the full classes. I think almost everyone finished all of his or her projects!! When was the last time that happened? Dressing up for dinner was fun. We had some very "Classy" ladies attending. We even had a Queen greeting everyone at the door! After dinner we were visited by Miss Big Brush, Miss Ann, Lucee with two ee's and Miss Pearl Ochre judging the students work in a very funny skit. (You really had to be there.)



Committee Chairs have been chosen for next year and the entertainment will be very different from past years. Set aside Oct. 1, 2 and 3rd, 2004 for next year at Butler Hill Road. Committees will be forming soon. You really don't want to miss this event next year.

Everyone has made my job as V.P. this year very easy. I'm looking forward to another year of all of you helping me do a good job. If you haven't been involved with committees yet, please consider helping out in some way. That is where all the fun is!

Thank you all again for all your help this year, Ellen

MEMBERSHIP ADDITIONS & CHANGES
November 2003

James R. Lair
5909 Dogwood Ln
Godfrey, IL 62035
(618)466-5167
JLAIR5909@aol.com
DOB: 13 August

Jo Lynne Lair
5909 Dogwood Ln
Godfrey, IL 62035
(618) 466-5167
JLAIR5909@aol.com
DOB: 26 April



Please make the following changes to your Membership Directory:

Cindy Hicks email address is:
hickscin@netzero.com

Ellen Brommelhorst's date of birth is
September 20th

CHRISTMAS PARTY INVITATION

You're Invited to a
Christmas Party

\$17.00 per member, \$19.00 per guest, if paid by November 15, 2003
\$19.00 per member, \$21.00 per guest, after November 15, 2003

**I will be attending the Christmas Party on December 7, 2003
12:30 - 4:00 PM at St. Charles Golf Course on Friedens Road
in St. Charles, Mo.**

Name _____ Phone _____

Address _____

_____ Zip _____

Members _____ x \$17.00 per member

Number of Guests _____ x \$19.00 per person

Members _____ x \$19.00 per member

Number of Guests _____ x \$21.00 per person Total = _____

Mail to: Toni Dossler, 1426 Old Farm Drive, St. Louis, Mo 63146
Postmark Deadline November 29,2003



The Christmas party committee would like to request donations for give-aways at the 2004 Christmas party. Please bring your donation to the September or November meeting and give them to Toni Dossler, Linda Nelson, or Laura Heathcote. Please also have them wrapped, so that no one knows what it is (not even the committee).

CHANGES TO THE BYLAWS: 2003

ARTICLE I: NO CHANGES

ARTICLE II: NO CHANGES

ARTICLE III: NO CHANGES

ARTICLE VI: NO CHANGES

ARTICLE V:

4. The privilege of making motions, debating and voting shall be limited to members.

CHANGE TO:

4. The privilege of making motions, debating and voting shall be limited to dues paying members.

ARTICLE VI:

1. The elected officers of this Chapter shall be President, Vice - President, Program Chairman, Membership Secretary, Recording Secretary, Treasurer and Newsletter Editor.

CHANGE TO:

1. The elected officers of this Chapter shall be the President, Vice - President, Program Chair, Membership Chair, Recording Secretary, Treasurer, Newsletter Editor, Wed Editor and Refreshment Chair.

(Refer to Article 7 of the Duties of elected officers)

2. All nominees for elected offices shall come from the general membership. All nominees must have been dues paying members for not less then 2 years immediately preceding the time of election. Nominees running for President should have previous Board experience.

CHANGE TO:

2. All nominees for elected offices shall come from the general membership. All nominees must be dues paying members for not less then 2 years immediately preceding the time of election. Nominees must be a member in good standing. Defined as a member who has attended 3 meetings prior to election.

5. Vacancies in office or in the inactivity of a Board Member shall be filled by a majority vote of the Executive Board. Inactivity shall further be defined as when an officer failed to attend four (4) consecutive meetings (Board and Chapter meetings)

CHANGE TO:

5. Vacancies in office or in the inactivity of a Board Member shall be filled by a majority of the Executive Board. Inactivity shall further be defined as when an officer has failed to attend two (2) consecutive Chapter meetings or Board meetings. This will result in an automatic dismissal from the Board.

ARTICLE VII:

(Under President)

d. Sign checks in the absence of the Treasurer.

CHANGE TO:

d. Sign checks in the absence of the Treasurer and co-sign checks all checks.

ADD:

g. Appoint another member (not on the Board) and along with the treasurer review the books mid - year.

5. Membership Secretary Chairman

CHANGE TO:

Membership Chair

b. Change from Chairman to Chair

6. Treasurer

g. Oversee the investment of any funds in excess of one thousand (\$1,000.00) in the Chapter savings account with the approval of the President and one (1) member of the Executive board.

CHANGE TO:

g. Oversee the investments of any funds in the excess of one thousand (\$1,000.00) in the Chapter savings account and any check over five hundred dollars (\$500.00) that is not normal expenses with

the approval of the President and one (1) member of the Executive Board.

ADD:

i. Must be bonded (Chapter will pay for the Bonding.)

7. Newsletter Editor

e. Be responsible for printing ballots for election purpose.

Eliminate:

e. Move to the Nominating Committee

ADD: Web Editor:

a. Ensure Web site is updated in a timely manor.

b. Present all material for Board approval to be posted to the site.

c. Keep accurate records of expenditures and receipts.

d. Keep accurate record on any income from the site.

e. Ensure that the newsletter is posted to the site at least 10 days prior to the meeting.

f. Post immediately information on special events and seminars.

9. Refreshment Chair:

a. Present budget for the year.

b. Coordinate with Program Chair on the theme.

c. Set up, clean up and store supplies for the meeting.

e. Keep accurate records of expenditures and receipts.

ARTICLE XI:

COMMITTEES:

A. Nominating Committee - This committee shall consist of no less than three (3) nor more than five (5) members who shall prepare a slate for the election of officers. Nominees must be members, and meet the qualifications as stated in ARTICLE VI 2 and have given prior consent to the Nominating Committee.

ADD:

Committee will be responsible for printing the ballots and issuing ballots.

2. Special Committees

a. Audit Committee - This committee shall consist of three (3) members, or an independent auditor, who shall verify the accuracy of the financial records of the Chapter prior to the assumption of office of the new officers. (The Treasurer is not a member of the committee, but must be present to answer questions.)

CHANGE TO:

a. Audit Committee - this committee shall consist of three (3) members and an independent auditor, who shall verify the accuracy of the financial records of the chapter prior to the assumption of office of the new officers. (The Treasurer is not a member of this committee.) Questions will be submitted to the Treasurer in writing and an answer will be expected with in 1 week of the receipt of the questions.

A Committee Chair cannot be appointed to the same committee position for more than two (2) years in a row.

IF THE ABOVE POSITIONS ARE ADDED TO THE BOARD THEN THE REFRESHMENT COMMITTEE WILL HAVE TO BE ELIMINATED.

e. Hospitality Committee - Members of this committee shall be responsible for obtaining and serving refreshments.

CHANGE TO:

e. Hospitality Committee - Responsible for meeting and greeting all visitors and members. Make sure that visitors are seated with a member and introduced and told about our chapter.

ARTICLE X: NO CHANGE

ARTICLE XI: NO CHANGE

ARTICLE XII: NO CHANGE

CHANGES TO STANDING RULES: 2003

1. Membership dues shall be payable December 1st. for the following calendar year and delinquent December 31.

- a. Individual members \$20.00 annually.
- b. Business members \$20.00 annually.

ADD:

- e. Teacher membership \$20.00 annually

5. A grant will be presented annually to an Executive Board member for the purpose of attending the Annual Convention of the National Society of Tole and Decorative painters, Inc. Hereafter referred to as the Society of Decorative Painters (SDP).

5. ELIMINATE

6. Every three (3) years (beginning 1988) the President will appoint a committee for not less than three Chapter members in good standing to review Bylaws and Standing Rules. This committee shall recommend revisions and/or additions to the Executive Board, then to the membership for vote, and finally to the Society of Decorative Painters for approval.

CHANGE TO:

6. Every three (3) years (beginning 1988) the President will appoint a committee of not less than three Chapter members in good standing to review By-Laws and Standing Rules. This committee shall recommend revisions and/or additions to the Executive Board, then to the membership for vote.

7. Awards:

- b. The Gold Brush award may be given annually and is a once in a lifetime award.

CHANGE TO:

- b. The Gold Brush Award may or may not be awarded annually and is a once in a lifetime award.

Gateway Decorative Artists

presents

SIXTH Annual Artists Holiday Boutique

You are cordially invited to attend our Sixth Holiday Boutique.
Featuring a unique display of hand made Crafts and Gifts.
It is a place to shop for those special gifts for family and friends.

A portion of the total sales will be given to:
WOMEN'S CENTER OF BRIDGEWAY COUNSELING SERVICE,
St. Charles, MO.

Date: Friday November 14, 2003 8:00am to 9:00pm
Saturday November 15, 2003 8:00am to 5:00pm

As a special thank you for your participation, we will have hourly door prize drawings on both days.

LOCATION: Amber Meadows Subdivision, O'Fallon, MO.
Hwy 70, exit at Bryan Road, 1.7 miles south to the subdivison entrance on left.
Follow the signs.

Event Supporter:
Rolwes Homes

BRING A FRIEND!!
CHAPTER MEETING MINUTES

September 14, 2003

The Gateway Decorative Artists meeting was held on September 14, 2003 at the Carrollton Club. All Board members were present with the exception of Treasurer, Janie Parisi, who was out of town. President, Allison Bacon, called the meeting to order at 1:05 p.m. She announced a goal of conducting the business portion of today's meeting in 45 minutes so that we may enjoy today's luncheon; try a Learn to Paint make-it-take-it; or just visit and enjoy each other's company. After welcoming all members and guests, Jeanne Abraham was asked to give the invocation.

Allison called for a motion to accept the June minutes as published in the newsletter. The motion was made by Jeanne Abraham and seconded by Maureen Wasserman. The motion passed. She then asked for a show of hands to accept the Treasurer's report as filed. All agreed.

Allison thanked all those who attended the pre-banquet get together at National in Indianapolis. She spoke about the fieldtrip to Kimmswick and what a fun time everyone had. We are planning another fieldtrip in the spring to Alton for lunch and shopping. A date for this event will be announced at a later time. Allison then gave a salute and recognition to members for all their hard work. Mary McDevitt was filling in for Mary Jane Jett who could not be present. Annette Sullivan would introduce the 2003-2004 Learn to Paint program with a member/guest MITI. This would be Annette's first time to teach a project. Mary Jo Kumer was filling in for Janie as Treasurer.

Allison then asked members who had participated in various activities to stand up and be recognized. This included everyone who had volunteered to decorate a table for today's luncheon; painted a piece for the silent auction; painted a suitcase; taught at retreat; worked on a retreat committee; painted a memory box. She announced that our chapter had the second highest sales of those participating in the silent auction. National raised over \$17,000 from the auction.

Ellen Rohne took the floor and announced that 63 suitcases had been painted and several more in progress would be forthcoming. Thirty-nine had already been delivered to her home prior to today's meeting. She thanked Annette Dozier, Barb Ogden, Debbie Christenson, Jan Rosenberg and Gloria Falk for holding suitcase workshops through the summer. She thanked all those who had brought painted memory boxes. Several hospitals were in need of boxes and she would pack and mail these as soon as possible. She asked for donations of small teddy bears to be brought to the November meeting for Shriner's Hospital. These should be small "huggables" with a value of not more than \$6-\$8.

Ellen also announced that she would accept registrations for the Touch of Class retreat up till the last minute. Members attending retreat should plan to dress up for an elegant banquet on Saturday night. Mary McDevitt brought a sample goody bag today to give first time attendees an idea of what could be included. Pat Wolf brought some of our chapter photo albums for members and guests to review.

Toni Dossier then took the floor to report on the Rosemary West seminar. She reminded members about the Debbie Christenson workshop on October 11. Today was the last day for signups and please contact Debbie direct if you need to order a surface. Toni has booked Sherry Nelson for April 2004. Pictures of class projects were available for review and members were asked to vote for their preferences. Sherry could be available for 4 days if we can fill a Thursday class.

Toni Dossier is also acting secretary for the By-Law Committee. She would like to have a quick meeting with committee members at the conclusion of today's activities. The by-law revisions will be a major topic of discussion at the November chapter meeting. Toni will host a Retreat Committee meeting at her home on Tuesday the 23rd at 9:30 a.m. to complete work on the decorations. Christmas party reservations need to be received by November 29. A form was included in the last newsletter.

Cindy Hicks reported that there were 64 members present and 8 guests. Cindy would like to receive payment for 2004 annual dues prior to the end of the year. She would like to update the calendar/directory information so it can be ready for printing and distribution as close to the beginning of 2004 as possible. Annual dues are \$20. The secret pal program will be continued in 2004. Secret

pal forms were available for handout today. Cindy then handed out secret pal gifts that had been brought to the meeting. Gerry Klein was thanked for today's attendance prizes, which were new books hot off the press. Attendance prizes were awarded to Jean Krebs, Vada Galvan, Mary Messmer, Pat Rowles, Jean Rogenhofer, Debbie Christenson, and Jean Hofmann.

Nominations Chair, Maureen Wasserman, set a goal to have at least 2 candidates for each office. She thanked Mary Jo Kumer for her help and hard work. She announced that everyone had been contacted either by phone or email. Nominations will also be taken from the floor at the November meeting. This year's candidates for office are:

| | |
|----------------------|------------------|
| President: | Allison Bacon |
| Vice President: | Ellen Rohne |
| Membership Chair: | Cindy Hicks |
| | Kay Vuichard |
| Treasurer: | Lori Reese |
| Recording Secretary: | Annette Sullivan |
| | Michelle Kasban |
| Newsletter Editor: | Tracy Kocher |

Allison announced that the bidding on the silent auction would begin following lunch. Suggested opening bids have been posted. Raises should be in whole dollar amounts. The proceeds from this auction will be placed in our general treasury. We will stagger the closing bids on these items. Mary Jo Kumer will be the cashier for this event.

Don't forget the Holiday Boutique, which will take place on November 14 and 15. Mary Jo has boutique information packets for all those who have registered to participate. The friends and family of Michelle Basteau plan to host a silent auction and are soliciting auction items, which will benefit the Marvin Basteau benevolent fund.

Lincoln Trails chapter in O'Fallon, Illinois is holding a Christmas auction on October 26. Our own Mary Jo Kumer will serve as auctioneer. Louise Kern provided a large box of free wood pieces. Members could take all they want.

With no further business to discuss, Mary Jo Kumer made a motion to adjourn at 1:48 p.m. Bobbi Gray seconded the motion. Table sponsors immediately commenced serving luncheon to their table guests.

Respectfully submitted,

Donna Wessel
Recording Secretary

.....

A big thank you to the entire cast of characters that performed in the skit at the October Retreat.

Never has a painting class been so much fun as the one seen in "A Seminar At the Up-Town Art Studio."

Thank you to the cast of characters: Ann Dozier, Vada Galvin, Jeannette Bishop, Ann Mohrman, Karen Steiner, Marilyn Hartnett, Ellen Rohne, Michelle Kasban and Lucee (spelled with 2 ee's).

A big thank you to the stage-hand Ginny Ogden. We could not have done it without you.

See you at the next Seminar!

~ Linda Nelson ~

FOR GREAT QUALITY
SERVICE & SELECTION SHOP...



FINE ART SUPPLIES
OIL PAINTS - CANVAS
BRUSHES - BOOKS
ACRYLIC PAINTS
ACCENT - DELTA - AMERICANA
WOOD TURNINGS
SCRAPBOOKING SUPPLIES
RUBBER STAMPING SUPPLIES
STENCILING - QUILTING
DMC EMBROIDERY THREAD
COUNTED CROSS-STITCH
PATTERNS & SEWING FABRICS
CANDLE MAKING SUPPLIES
CUSTOM FRAMING & MATTING
BASKET MAKING SUPPLIES
QUALITY HANDMADE CRAFTS & GIFTS

\$10

OFF ANY
FRAMING AND
MATTING
PURCHASE 11X14
OR LARGER
(Limit one coupon
per purchase)
EXPIRES: 12-31-03

25%

OFF
ANY
PURCHASE
(Limit one
coupon per
purchase)
EXPIRES: 12-31-03

**IF YOU NEED SOMETHING SPECIAL
YOU CAN NOT SEEM TO FIND.
CALL ME AND I WILL DELIVER IT
TO THE NEXT MEETING.**

HOURS: MONDAY - SATURDAY 9 A.M. - 5 P.M.

OWNER: TRACY KOCHER

102 S. JACKSON ST.
FARMINGTON, MO 63640

(573) 756-8060

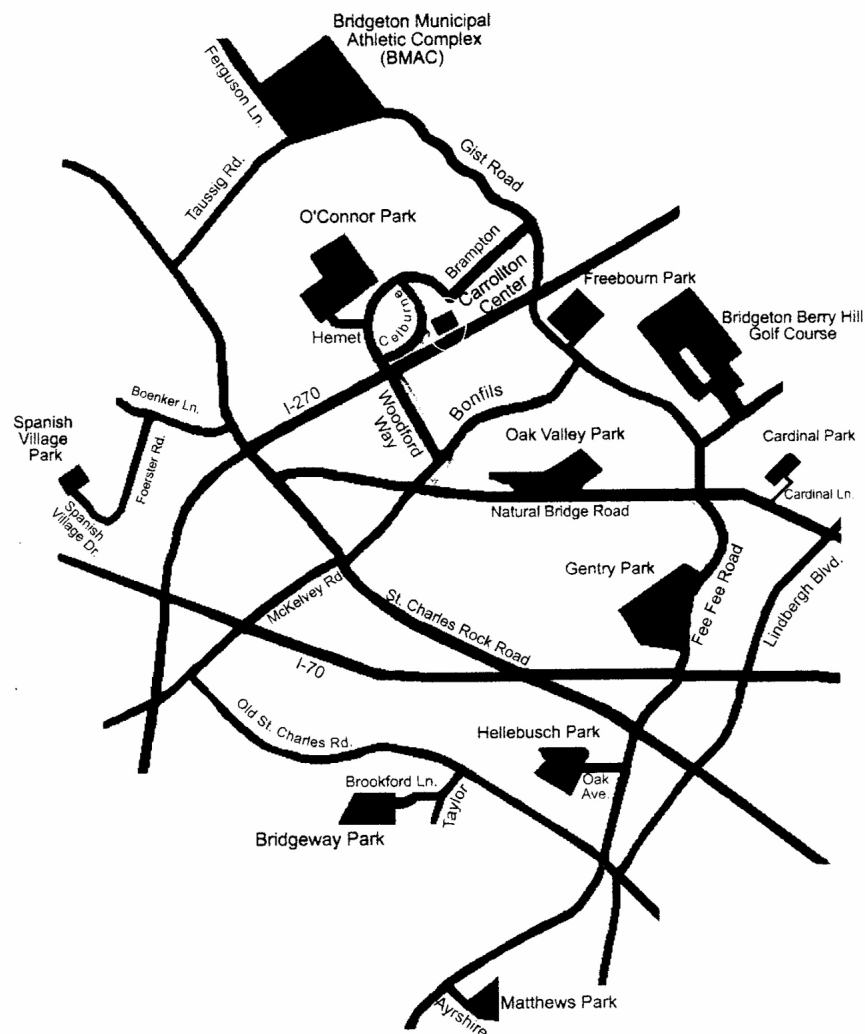
LOCATED IN BEAUTIFUL DOWNTOWN FARMINGTON

DRIVING DIRECTIONS TO CARROLLTON COMMUNITY CENTER

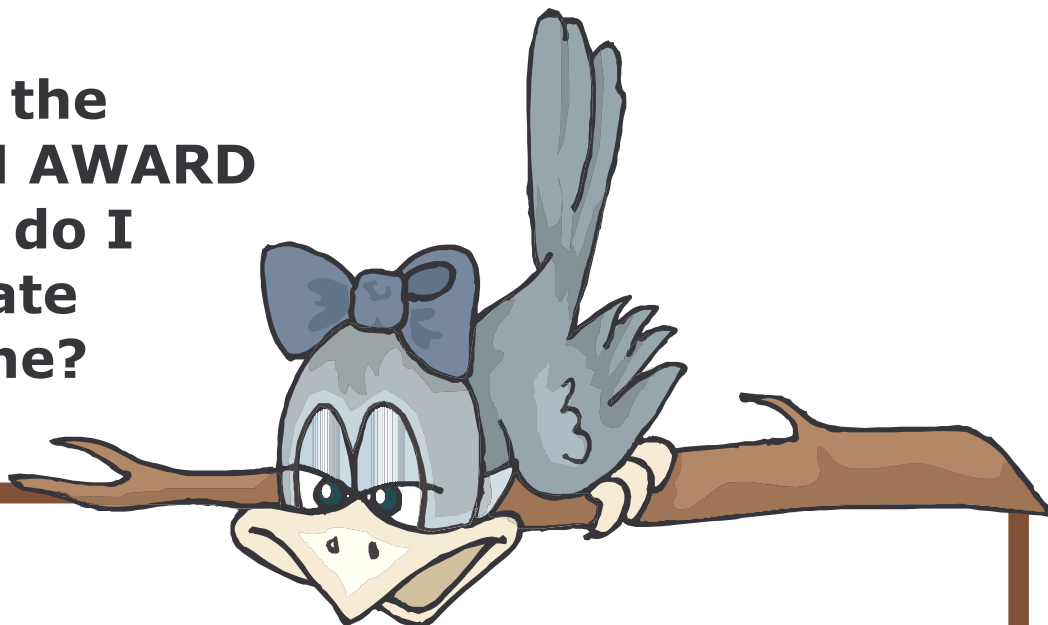
From: Bridgeton Community Center, 4201 Fee Fee Road (Gentry Park)
To: Bridgeton Carrollton Center, 12561 Celburne Drive

- North on Fee Fee Road to Natural Bridge (stoplight)
- Turn Left (west) onto Natural Bridge Road
- Turn Right (north) onto Bonfils Drive (first stoplight)
- Turn Left (west) onto Woodford Way (first stop sign)
- Turn Right (north) onto Celburne Drive (second stop sign or first stop sign immediately after I-270 overpass)
- Carrollton Center will be on the right-hand side at the bottom of the hill

LOCATOR MAP



What is the GOLD BRUSH AWARD and how do I nominate someone?



WHAT: The Gold Brush Award is the highest honor bestowed upon a Chapter member. It is given to acknowledge outstanding contributions to the Chapter as well as dedication to the art of Decorative Painting.

WHO: It is given to a member who sets an example for all of us, one whose dedication is above the norm. She promotes the interest the Chapter and stimulates interest in Decorative Painting both a Chapter functions and outside of Chapter activities. She gives unselfishly and without a thought of personal gain. Her contributions need not have been made just in the past year, but are of a long-standing nature.

WHEN: The Gold Brush Award is given to only one member annually (not necessarily every year) and is a once in a lifetime honor. The award is presented at the December Christmas Party Meeting without prior announcement of the recipient.

HOW: To nominate someone for this high honor, fill out the form below. The Committee will research your nominee's qualification based on information you and others give us. If you know of a specific service your nominee has performed, please state it briefly. If more information is needed a Committee member will contact you.

Please be conscientious in your choice and remember that this is not a popularity contest. A nomination box will be set up at the September and November meeting with extra forms available. Drop your form in the box or mail it to:

GOLD BRUSH AWARD 2003

TONI DOSSER

1426 OLD FARM DRIVE

ST. LOUIS, MISSOURI 63146

FORM MUST BE SIGNED TO VALIDATE NOMINATION

Each chapter member is allowed to nominate only one candidate, which will be kept confidential.
My Nominee for the gold brush award for 2003 is:

Reason: (State briefly - Specific Chapter and or community service)

Your Name: _____ Phone No: _____

Signature: _____

MEMBERSHIP INFORMATION

Election of Officers for 2004

President:

Allison Bacon

Vice-President:

Ellen Rohne

Program Chairman:

Toni Dosser

Membership Chairman:

Cindy Hicks

Kay Vuichard

Treasurer:

Lori Reece

Recording Secretary:

Newsletter Editor:

Tracy Kocker

~ Awards Lists ~

Committee Chairmen!!

I need a complete list
of your committee
members at the
November Meeting.

Awards time is coming

up and I want to make sure that

everyone gets the recognition they

deserve. Please get your lists to me at
the November meeting or earlier. You

can e-mail me at abacon@psdr3.org.

Thanks, Allison



~ Show and Tell & Teacher Sign Up Tables ~

Please bring projects that
you'd like to share with us! I
know we've been painting this
fall. Bring in some of your
creations. We'd love to see
them. Teachers, Gateway has
people that are looking for
classes to take. Bring in your
projects and sign up sheets. I bet your classes
will fill up in no time!



Happy Birthday

JoAnn Macia 11/3
Kay Waldron 11/11
Barbara Ogden 11/12
Mary Jo Kumer 11/13
Virginia Hauser 11/24
Carolyn Swanson 11/30
Joyce Bennington 12/7
Carole Woods 12/7

Linda Newlin 12/9
Joan Love 12/12
Betty Mark 12/17
Jean Lindsey 12/22
Judy Sloan 12/27
Debbie Christenson 12/28
Marilyn Hartnett 12/29

SEMINAR INFORMATION

All Seminars and Sharing Workshops are held at the Carrollton Community Center from 9:00-5:00

To expedite registrations during the Chapter meetings please follow the following procedure:

Forms for registration are printed in the newsletter and will be available on the registration table during the meeting. Complete a form for each Sharing Workshop or Seminar. Total the cost of the classes, write a check attaching it to your forms with a staple, place the completed forms with check attached in the box provided. **YOU DO NOT NEED TO STAND IN LINE. REGISTRATIONS WILL BE LOGGED IN LATER.**

Please register before and after the meeting only. Registrations will not be taken during the meeting. If you have all the necessary forms and check ready before coming to the meeting the process should go very quickly and painless for you. If you need more than the form provided in the newsletter you can make copies or pick up several forms at the meeting for you to have on hand at home.

Thank you for your help!
Toni Dosser

Cost per day for the Seminars is \$35. Cost per day for the Sharing Workshops is \$15

Make checks payable to Gateway Decorative Artists for the class. Checks for surfaces should be made out to the teacher.

Seminar and Sharing Workshop Policies

- A non-refundable, one-day deposit will be required to register for one or more days of a seminar. Balance is due at the chapter meeting prior to the Seminar date.
- Program Chairman should be notified of any cancellations, and will provide you with a waiting list, if available.
- It is your responsibility to sell your Seminar or Sharing Workshop space and surfaces.
- Failure of member to pay for remainder of Seminar and surface fee ordered, will result in loss of all membership privileges.

All forms should be mailed/given to:

Toni Dosser
1426 Old Farm Dr.
St. Louis, MO 63146



2003 BOARD OF DIRECTORS
Gateway Decorative Artists of Greater St. Louis

President

Allison Bacon
314-579-9493

First Vice-President

Ellen Rohne
636-240-1684

Treasurer

Janie Parisi
636-463-1287

Membership Chairman

Cindy Hicks
314-298-8043

Recording Secretary

Donna Wessel
314-428-8226

Program Chairman

Toni Dosser
314-434-9378

Newsletter Editor

Suzanne Glidden
636-825-3348

Parliamentarian

Carolyn Dawson
618-259-0990

Publicity Chair

Gloria Falk
636-561-6623

Refreshments

Mary Jane Jett
314-843-5539

Area Representatives

Arlene Markland (South County) 636-677-4274
Lida Gillham (Illinois) 618-656-9294
Julia Lamborn (North County) 314-731-3561
Maureen Wasserman (West County) 636-227-2843

REGISTRATION FORM - SEMINAR/SHARING WORKSHOP

Seminar/Workshop Name _____

Name _____

Address _____
(street) (city) (state) (zip)

Seminar Dates _____

Surfaces must be purchased through the Chapter.

No refunds of seminars or surface fees will be given, upon Members cancellation. Cancellation notification must be given to Program Chairman. Your signature on this form indicates you are in agreement of all rules regarding Seminars and Workshop policies.

Fee _____

Surface Fee _____

Total Due _____

Amount Paid _____

Amount Due _____

Registrant's Signature

Check # _____ Cash _____

Authorization Signature

Complete the form, attach a check and make a copy for your records.
Send to Toni Dosser - 1426 Old Farm Drive, St. Louis, Mo. 63146 or call 314-434-9378 or fax 314-514-0456

SDP MEMBERSHIP FORM

S O M A N Y B E N E F I T S !

INDIVIDUAL membership

Do you want to discover the joy of painting; be creatively inspired; improve your painting; attend the premier decorative painting conference; be informed with an award-winning magazine? Yes? Here are more reasons to join:

six big issues of *The Decorative Painter* magazine • free *Conference Catalog* • chapters to join at a local level members-only Resource Communications Center purchase option • industry-wide *Business & Teacher Online Resource* access • health insurance purchase option • credit card option SDP Member Scholarship Program • Certification Program Teacher Development Program • annual Conference with classes, exhibits and trade show • website access • knowledgeable staff to track down your answers • dues help support the painting industry • validation of your painting passion! ■

BUSINESS membership

Who should be a business member? The individual, company, designer, shop owner, crafter, teacher, manufacturer, publisher, chain store or similar entity seeking income from the decorative painting industry. You benefit from so much!

six big issues of *The Decorative Painter* magazine • preferred member's advertising rates in the *Conference Catalog* • free listings in the industry-wide *Business & Teacher Online Resource* • website links • waived registration fee for SDP Annual Conference business events • privilege to exhibit at the SDP Annual Conference • Certification Program • health insurance purchase option • merchant credit card service option business e-newsletter with articles, tips and trends credit card option • Teacher Development Program • website access • knowledgeable staff to track down your answers ■

2 0 0 4 M E M B E R S H I P F O R M

1 MEMBER INFORMATION

Name and address as it should appear on the mailing label

Name _____ Membership # (if renewal) _____
 *Household Member Name _____ Membership # (if renewal) _____
 Business Name (if joining as a Business member) _____
 Mailing Address _____
 City _____ State _____ Postal Code _____ Country _____
 E-mail _____ Website _____
 Phone () _____ Fax () _____

2 MEMBERSHIP CATEGORIES (U.S. funds, includes postal fees)

- | | |
|---|---|
| U.S. | CANADA (U.S. FUNDS) |
| <input type="checkbox"/> \$35 Individual (\$40 after 12/1/03) | <input type="checkbox"/> \$50 Individual (\$55 after 12/1/03) |
| <input type="checkbox"/> \$65 Business (\$70 after 12/1/03) | <input type="checkbox"/> \$80 Business (\$85 after 12/1/03) |
| NON-U.S. (U.S. FUNDS) | ANY COUNTRY (U.S. FUNDS) |
| <input type="checkbox"/> \$65 Individual (\$70 after 12/1/03) | <input type="checkbox"/> \$15 Household* |
| <input type="checkbox"/> \$95 Business (\$100 after 12/1/03) | |

*Household membership is for a member sharing the same address as an Individual or Business member. Application must accompany the membership or renewal form of the Individual or Business member.

IMPORTANT

- Membership year is Jan. 1 to Dec. 31, 2004.
- Dues postmarked after Dec. 1, 2003 require an additional \$5 postage/handling fee. This does not apply to never-before members or those who were not a member in 2002 and 2003.

3 BUSINESS & TEACHER ONLINE RESOURCE CATEGORIES

BUSINESS MEMBERS ONLY

- ✓ **Business Members, CHECK** all boxes that apply for the *Business & Teacher Online Resource*. Listings are FREE with your business membership.
- | | |
|---|---|
| <input type="checkbox"/> Author | <input type="checkbox"/> Retailer |
| <input type="checkbox"/> Distributor/Wholesaler | <input type="checkbox"/> Teacher |
| <input type="checkbox"/> Home Studio | <input type="checkbox"/> Travel Teacher |
| <input type="checkbox"/> Manufacturer/Importer | <input type="checkbox"/> Other |
| <input type="checkbox"/> Publisher | |

INDIVIDUAL MEMBERS ONLY

- ✓ **Individuals, CHECK** boxes that apply. Listings are \$10 each.
- Author Teacher Travel Teacher
 My design and/or painting skills are for hire.

4 BUSINESS & TEACHER ONLINE RESOURCE REQUEST FOR PAPER COPY

The "paper copy" version of the online resource is taken from the SDP database and is mainly an option for those without Internet access; it is not a bound book.

- FREE for **Business Members**
- \$15+ postage for **Individual Members**
 (Please call (316) 269-9300 ext. 110 or e-mail stacee@decorativepainters.org for postage costs.)

- ✓ CHECK this box if you are requesting a paper copy of the *Business & Teacher Online Resource*. To be included in the paper copy version (based on the categories you checked above), you must renew by Dec. 1, 2003. Copies will be mailed in February 2004.

5 PAYMENT

Make checks payable to: SDP, 393 N. McLean Blvd., Wichita, KS 67203-5968. • For faster service, use MasterCard or VISA and call (316) 269-9300, ext. 105 or fax application to: (316) 269-9191 • Join online at www.decorativepainters.org

Total _____
 VISA MasterCard Exp. date _____ Phone _____
 Card number _____ Signature _____
 YES! This is a Gift Membership from _____ Memb.# _____

The Decorative Painter is published bimonthly by the Society of Decorative Painters, 393 N. McLean Blvd., Wichita, KS 67203-5968. Periodicals postage rates are paid at Wichita, KS. \$20 of your dues is for The Decorative Painter.

DUES POSTMARKED AFTER DEC. 1, 2003, REQUIRE AN ADDITIONAL \$5 POSTAGE/HANDLING FEE (DOES NOT APPLY TO NEW MEMBERS).

GATEWAY DECORATIVE ARTISTS MEMBERSHIP FORM

| | |
|--|---|
| 2003 Gateway Decorative Artists Greater St. Louis Chapter of The Society of Decorative Painters | |
| Name | |
| Address | |
| City, State, Zip | |
| Phone Number | |
| Email Address | |
| Would you prefer to receive your newsletter via the website? yes <input type="checkbox"/> no <input type="checkbox"/> (http://www.gatewaydecorativeartists.com) | |
| Birth Month & Day | |
| National Membership # | |
| Certification: TDA <input type="checkbox"/> MDA <input type="checkbox"/> CDA <input type="checkbox"/> New Member <input type="checkbox"/> Renewal <input type="checkbox"/> | |
| Check one or more: Individual Member <input type="checkbox"/> Teacher <input type="checkbox"/> Business Member <input type="checkbox"/> | |
| Name of shop if status is teacher: | |
| Annual dues are \$20 per year, payable in advance. Please indicate which year your annual dues represent: 2003 <input type="checkbox"/> 2004 <input type="checkbox"/> 2005 <input type="checkbox"/> | |
| Please make checks payable to: Gateway Decorative Artists | |
| Mail to: | Cindy Hicks 11779 Unity Drive Bridgeton, MO 63044 |
| If you have questions: | Cindy Hicks hickscin@netzero.com |



Your national dues need to go directly to SDP.

When mailing your membership dues to Gateway, you should include a copy of your national membership card.

Sign up for the Sherry Nelson Seminar!

April 22, 23, 24 and 25th of 2004
We will be painting Thursday – Sunday

Complete the registration form included in the newsletter and return it to Toni Dosser.

From Your Newsletter Editor:

**Suzanne Glidden
632 I Park Commons Court
St. Louis, MO 63088**

artdzynr@hotmail.com



To: