



Gateway Gazette

www.gatewaydecorativeartists.com

Volume 33 Issue 5

St. Louis, Missouri

November/December 2006

What's Inside

Calendar	2
Your President	3
Retreat Report	4
Charity Corner	7
Christmas Party	8
Seminar & Workshop	9
In the Spotlight	11
Secretary Report	12
For your information	14
Gold Brush Guidelines	16
Gold Brush Form	18
Treasurer	19
Election	20
Membership forms	22



Chapter of
National Society of
Decorative Painters

www.decorativepainters.org



CHAPTER MEETING

November 11, 2006

Sunday 1:15 P.M.

At Maryland Heights Center

Program: Snowman Ornament

Bring your usual paint supplies for the ornament paint-in. Judy Dodson will be teaching this wonderful Christmas ornament, and will provide pattern, paint, wood and glue for \$3.00.

Our annual election of
officers will be held at
the November
Meeting.



Coming up
Christmas Party
December, 3 2006
at
Heart of St. Charles
(map P.23)

Membership Renewal is Due

Please turn in your membership checks and forms no later than the next meeting November 12th. This will guarantee that your name will appear in the address book. Any renewal memberships received after that date will not be guaranteed a place in the address book. I will hold the checks until the end of the year unless you advise me otherwise.

**BOARD OF DIRECTORS
2006**

President

Donna Wessel 314-428-8226
toletinker@earthlink.net

Vice-President

Gloria Falk 636-561-6623
arttouch@aol.com

Program Chairman

Marilyn Hartnett 636-332-0839
mhartnett@centurytel.net

Membership Secretary

Lorie Reece 314-971-0190
Harley_dog_50@hotmail.com

Recording Secretary

Kay Vuichard 636-441-9438
Twofrogs63@yahoo.com

Treasurer

Jean Lindsey 314-921-0425
jeanlind@sbcglobal.net

Newsletter Editor

Josée Laferrière 636-327-9060
Jlgate_art@hotmail.com

Parliamentarian

Carolyn Dawson

Area Representatives

South County

Joan Love 314-842-7288

Illinois

Lida Gillham 618-656-9294

North County

Julia Lamborn 314-731-3561

West County

Maureen Wasserman 636-227-2843

If you have anything you would like to pass on to the Chapter, such as illnesses, congratulations etc. you may call one of these people or your membership chairman, Lorie Reece

MARK YOUR CALENDAR



2006 Scheduled Events

November 12	Chapter Meeting	Maryland Heights Center
December 3	Christmas Party	Heart of St. Charles
February 4, 2007	Chapter Meeting	Maryland Heights Center

Upcoming Events

March 23,24,25, 2007	Lynne Deptula Acrylic Seminar	Wingate Inn, 13615 Riverport dr., Maryland Heights
April 27,28,29, 2007	Scheewe demonstration Weekend Acrylic and Watercolor	To be announced
June 23,24, 2007	Janelle Johnson Colored Pencil Seminar	To be announced
August 25,26, 2007	Linda Coulter Grisaille seminar	To be announced
April 25,26,27, 2008	Cheri Rol, Acrylic	To be announced
July 25-27, 2008	Mary Gibilisco, Genesis Seminar	To be announced

Location

All chapter meetings will be held at the Maryland Heights Center unless noted otherwise.

From 270:
Dorsett Road West
Right on McKelvey Rd.
Right on Ameling
Left on McKelvey
2344 McKelvey
314-434-1919



**Deadline for your articles
For the next Issue:
January 14, 2007**

**STANDING COMMITTEE
CHAIRS 2006**

Nominating Committee
Cheryll Wilburn

Publicity
Lorie Reece

Gold brush Award
Mary McDevitt

Charity
Gloria Falk
Cheryll Wilburn

Hospitality
Lorie Reece

**SPECIAL COMMITTEE
CHAIRS 2006**

Refreshments
Jean Ellison

Librarian
Barb Ogden

Webmaster
Josée Laferrière

Memory Boxes
Gloria Falk
Cheryll Wilburn

Christmas Party
Marilyn Hartnett
Judy Dodson
Karen Steiner
Ann Mohrman
Marilyn McDonald
Vada Galvan
Jeanette Bishop

Historian
Gloria Falk

*Message From
Your President*



I don't know about the rest of you, but I am pumped. For the first time since becoming a member I was able to attend retreat. What a good time it was. I can't remember when I laughed so much. I loved my classes; the food was great; and we had a country band to entertain us

Saturday night -- not to mention Miss Kitty and Trigger. It doesn't get much better than this. I also had an opportunity to shop at the famous outlet mall to get a start on my Christmas shopping. Thank you, Gloria, for all your hard work and planning that made this year's retreat a success.

The year has gone by fast and will soon be over. The Christmas party is just around the corner. My term of office is coming to a close. I want to thank you for giving me the opportunity to serve as your President these past two years. It was a wonderful experience. I was able to get to know some of you a little better which I consider a big plus. I had the privilege to work with some very special ladies who served on the board with me. I could not have asked for a more dedicated, thoughtful, energetic, hardworking, fun loving group of officers with which to be linked in service to Gateway Decorative Artists. I would like to encourage each of you to consider following in our footsteps by choosing to also run for office at some point in the future.



I hope you'll plan to join us at the November meeting. See you soon.

Donna Wessel



REPORT ON BOOT SCOOTIN' BOOGIE RETREAT 2006

Our 2006 Retreat is over but far from forgotten. Some came down to the lake early on Thursday to get their shopping done. Friday at noon we started with the make-it and take-it's offered by Judy Dodson and Barb Ogden. There was good participation in those classes with a total of 26 people participating. Judy taught a cute combination santa/snowman ornament and Barb taught a pretty pumpkin. Cute projects ladies, thank you so much.

We had dinner in the late afternoon on Friday and exchanged our secret pal goodie bags and gave out some door prizes. At 6:00 we started with our three Friday evening classes (6-10p.m.). Judy Dodson offered another session of her MITI after classes were over with, for those that missed the afternoon session.

Saturday morning, we were up at the crack of dawn (7:00a.m.) for our breakfast (breakfast sandwich, muffins, donuts, coffee, tea & milk). The convenience of having all of the meals provided for us this year was great. The hotel staff was wonderful to work with. They enjoyed seeing our ladies having so much fun.

Then it was off to our classes (8-noon). We returned for our lunch (club croissant sandwich with chips, etc.) and to relax a little before the classes started for the afternoon session (2-6pm). We gave out some more door prizes. The gals were busy painting and I was running around trying to capture the event with my digital camera.



Next was our Saturday night event. Some of the gals really got into the costume contest. We had Miss Kitty (a.k.a. Marilyn Hartnett) just swishing around the room dropping gold coins on the table for everyone and flirting with all of the men.

**The winners of the Costume contest were:
First Place: Marilyn Hartnett and Second Place was
Mary Jane Jett.**



Then a cowgirl (Lorie Reece) came running into the room trying to tell the Marshall (a.k.a. Donna Wessel) that a Brush Bandit (a.k.a. Judy Dodson) with a cap gun loaded was on her way to get us to give up our precious brushes, but the Marshall had a bigger gun and stopped the Brush Bandit before any damage could be done.



All of a sudden we hear horses coming ...or was it A horse?? We weren't sure...but ahhh yes, it was one horse (a.k.a. Mary Jane Jett), making a lot of noise and dropping brown patties all over the place. Her caretaker, Allison Bacon was doing her best to keep up by doing the proper duty of scooping up those patties, so as others would not step on them (they had made chocolate cookies and wrapped them in saran wrap for their skit – what a cute idea ladies).



The Big Chief Indian (a.k.a. Carolyn Bacon) followed behind trying to catch up to that lone horsewoman.





Let's not forget Julio Inglesies (a.k.a. Ann Mohrman) and Willie Nelson (a.k.a. Marilyn McDonald) along with their girl, Karen Steiner.



We had lots of cow pokes in the room and a Lady (Cathy Somraty) who had so much fun with her many layers of dress and showing us her pantaloons as she flipped her skirt around.



Pictured here are Jean Rogenhofer, Donna Wessel and Jackie Kohler.

We had a delicious supper, Stuffed Pork Chop with all the fixins', after which our live entertainment started.

Rich Helton and Circle of Friends, which consists of Rich Helton (lead singer and song writer); Mike Parisi (Lead rhythm guitar, picker and singer); Janie Parisi (bass guitar and singer); Dee Walton (guitar player and singer); and last but not least Rhonda (drummer and singer).

Here are a couple of dates where they are playing next:
Nov. 5 - Lions Club in Wright City, MO. (Show and Dance)
2 - 5 pm - cover charge \$5

Nov. 14 - Landmark Restaurant, Troy (Guests of Frank & Jean Vaughn)
5:30 - 8:00pm



First off, Rich got the group to sing Happy Birthday to The Big Chief Indian (Carolyn Bacon). After which Julio and Willie got up to sing with Rich - Julio and Willie did a great job - Rich was not sure of the words to the song, but that didn't keep him from trying!! Rich also made his way into the crowd to dance with the ladies that evening, of course he had to dance with Miss Kitty. He couldn't take his eyes off of her and was taken back with that lovely dress she had on. <Smile>. He didn't stop with Miss Kitty though, he danced with Allison Bacon, Judy Dodson, Karen Steiner & Judy West. The dance floor was busy that night.



Report on Boot Scootin' Boogie Retreat 2006 (cont.)



Later Junior (a.k.a. Mike Parisi) enters trying to stir up commotion... he had a new spray he had come up with – it was supposed to keep the ladies away from him. He had to experiment to see if it worked...first he called upon Lou Ann Duryea and she assured him it worked. Next was Judy West....and she told him definitely it DID work. Then last but not least was Lida Gillham – who assured him wholeheartedly it did work also – Junior loved Lida's cow vest she had on.



To top the evening off we had a painted photo opportunity – a floozie dance hall girl - many took the opportunity to have their picture taken. What a fun night we had.



Sunday started early again with breakfast (same as Saturday's) at 7 a.m. Then it was off to classes 8 – noon. We finished our weekend off with lunch – Chicken Salad. We drew names for the table decorations.

After lunch it was time to head back home. The rain came down for a little bit, but not enough to dampen our spirits. The meals were delicious. The hotel was very accommodating to us. According to reports everyone went away knowing that they had a fun weekend of painting and talked about it all the way home.

Gloria Falk, VP

Financial Report of the 2006 Retreat as of Oct. 22, 2006

Income: \$4105.00
Expenses: \$4104.49
Profit to date:\$.51

Some stats for you:

In 2006 we have 76 members in the chapter. 30 attended Retreat this year which calculates to 39.4% of the membership attending Retreat.

In 2005 we had 99 members in the chapter. 38 attended Retreat which calculates to 38% of the membership attending that Retreat.

In 2004 we had 108 members in the chapter. 46 attended Retreat which calculates to 42.5% of the membership attending that Retreat.

I want to give a personal "thank you" to everyone who attended retreat – thanks for your support in this activity for the Chapter. Also a BIG thank you to:

1. All of the teachers for their classes, including Judy Dodson & Barb Ogden for their make-it/take-it's.
2. Marilyn Hartnett and Lorie Reece for their help in decorations.
3. Vada Galvan, Barb Ogden & Ellen Rohne for the painting of the chairs for the "Opportunities of Ownership".
4. Donna Wessel and Kay Vuichard for their assistance during retreat.
5. Carolyn Bacon & Maureen Wasserman for their door prize donations.

CHARITY CORNER

By Cheryl Wilburn

MEMORY BOX

This is why the memory box program is so important - please read:

I am a childless mother. I was given a memory box by my OB yesterday, and I want to write and share my story with you.

I have been married for five years and have tried to conceive a baby for the past four. This past April, God answered our many, many prayers, and I found out I was pregnant with our first baby. Early on, I had some disturbing symptoms that were in line with an ectopic pregnancy. As a result, we got to see an ultrasound of our baby at only 6 weeks 4 days. There he/she was...a tiny "bean" with a strong heartbeat blinking away. We were reassured that everything was normal.

Four weeks later, I went to my 10-week checkup and was assured that everything was normal. They gave me a due date of 12/27/05. A Christmas baby!

Three weeks later I went to my 13-week checkup, heard the heartbeat for the first time, and was told that my baby was active and healthy.

After that, I felt really free to tell lots of people we were pregnant. I mean, I had made it out of the "most dangerous trimester" and my baby was great. I was showing, growing into my maternity clothes, and we spent a day at Babies R Us, registering. My mother-in-law even set a date for my baby shower. I was so happy.

Four weeks later I went to my 17-week checkup -- and the world crashed in. They could not find the baby's heartbeat, and the ultrasound showed no movement. My AMAZING and WONDERFUL doctor called radiology at the hospital and got me in right away for a more thorough ultrasound. But first she gave me a cell phone to call people because she didn't want me alone if I "got bad news." Well, my Mom didn't make it to the ultrasound room in time, so the doctor stayed with me -- literally holding my hand as I saw the last images of my baby -- and the flat line below that should have shown a heartbeat. She simply said, "I'm sorry," squeezed my hand, and then led me, in my state of speechless shock, to the next room where we could talk. When my Mom arrived, she cried with us and took plenty of time to explain what the next steps were.

The next day I went in for a pre-surgical procedure to dilate me -- I found out my OB was there on her day off just to see me. Then the following day they put me into early labor and prepped me for my D&E. I was wheeled into the OR, where again my Dr. held my hand while they put me to sleep. I woke up about two hours later, and I wasn't pregnant anymore.

It has been a very difficult three weeks since then. My body has finally healed, and we are even trying again. It's my heart that is still in many, many pieces, and I ache for my tiny baby. I should be 20 weeks pregnant -- halfway. Instead I am trying to carry on with my life.

Last week I asked my doctor if she could get me ultrasound pictures because I hadn't been able to get copies. She called down right away and got them for me. She also went to pathology, where they are testing my baby's tissue to determine cause of death, and she got a handprint of my tiny baby. It is absolutely amazing -- 1/2 inch tall with every finger visible and perfect. Yesterday I went to see her, and she gave me these things, in a memory box painted by Ruth Shadbolt. It sits on my nightstand, containing the only tangible connections I have to my first child. It also holds poems and emails that have helped me get through. I want to express my deepest thanks for what you are doing.

Please pass along my gratitude and if you want to -- my story - - to the people who make this project possible. It is a small comfort in this time of unbelievable pain.

By the way, I am a patient at Western Maine OB/GYN in Norway, and my doctor is Carolyn Costanzi. I had surgery at Stephens Memorial Hospital. Please continue to reach out to ladies there. It's a small help.

With deepest gratitude for your kindness,
Sarah Johnson, Oxford"

Just a little reminder: Please remember to remove the labels on the bottom of the Memory Boxes before you paint them. Also, to give it a complete look, please varnish the entire box. Make sure the varnish has had time to cure before putting the lid on as there have been some problems with the lids sticking and removing paint. We usually put the bottom of the box in a plastic bag then put the lid on the box over the plastic bag. For the November meeting please try to return all of your painted Memory Boxes.

CHARITY CORNER (cont)

By Cheryll Wilburn



Girls preparing the memory boxes for shipping.

TURNING POINT

For the November meeting I thought it would be nice to bring some things for the women at Turning Point for Christmas

Some ideas that were given to me were:

- | | |
|------------------------|---|
| Slippers/slipper socks | Light weight robes |
| Gloves/scarves | Thermal tops |
| Sweatshirts/sweatpants | Hand lotion/body lotion |
| Shower gel | Makeup-moisturizer,
face cleanser |
| Alarm clocks | Flashlights |
| Nail polish | Pencils, pens, tablets,
memo tablets |

Journals- They are usually asked to keep one
Gift cards to Wal-Mart or Dollar General – these are stores in Warrenton

Of course, anything for kids of all ages is also welcome.

Last chance to put your name in the drawing. The drawing for the year long donations to the Memory Box Program and Turning Point will be at the November meeting.

You're Invited to a Christmas Party

December 3, 2006
11:00 a.m. to 3 p.m.

Come and ring in the Christmas season with our Dazzling Holidays Christmas luncheon to be held at The Heart of St. Charles Banquet Center located at 1410 South 5th Street, St. Charles, MO. There is plenty of parking on upper level, and the lower parking area is handicap accessible. We plan to have an ornament exchange, preferably hand painted by you as a special keepsake.

The menu is as follows:

- Chicken or Beef Entree
- Red Skinned Potatoes in Butter
- Green Bean Almondine
- Pasta Salad
- House Salad
- Relish Tray, Cheese Tray, Bread & Rolls
- Assorted Desserts
- Open Bar Included

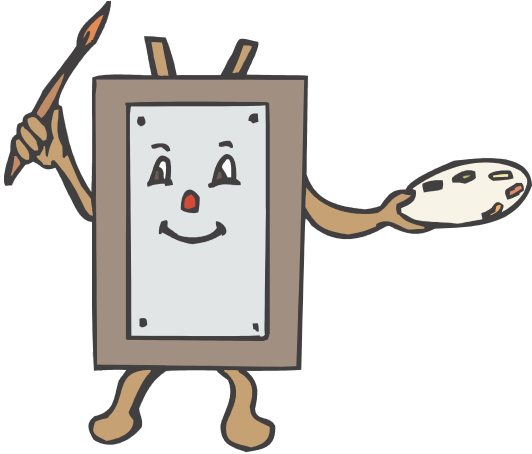


The cost is \$30 per person and deadline for reservations is November 15, 2006, and you can register at the November meeting or by calling Marilyn Hartnett (636) 332-0839.

This is the last meeting of 2006 and we will be installing new officers and awarding the Gold Brush to one of our members. Guests are welcome.

Christmas Party Reservation	
Name: _____	Phone: _____
Guest Name: _____	
Check no: _____	Amount: _____
Special Dietary Needs: _____	

SEMINAR'S AND WORKSHOP'S



Seminars – 2007

Lynne Deptula – March 23, 24, 25, 2007 (Acrylics)

The projects are: Friday – Stroke work on a plate; Saturday and Sunday the French Country Chest. This class is filling up and pictures of the projects will be on display at the November meeting. The surface source for the tin plate is listed as Barb Watson's Tinware (<http://barbwatson.com/index.htm>); for the country chest, Stonebridge Collection (www.stonebridgecollection.com). The projects can be painted on your own surfaces as well.

Scheewe Weekend – April 27, 28, 29, 2007

This will be a 2 ½ day seminar, and product and surfaces will be furnished. Cost averages \$110 for the full seminar. Friday afternoon is prep time and the two following days will include acrylic and watercolor. The seminar will be taught by a Scheewe trained teacher.

Janelle Johnson – June 23, 24, 2007

This is a colored pencil seminar, and will be a two-day project. The cost for this seminar depends on how many sign up. We have already had lots of interest in this seminar so if you are interested, let us know even though deposits are not due now.

Linda Coulter – August 25, 26, 2007

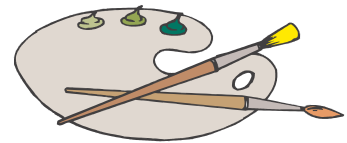
Learn how to create elegant paintings using the Coulter Grisaille and Coulter Oil Colors. “The Grisaille technique uses color glazes (a mix of transparent oil colors with an oil medium added); then these colors are modestly applied to the dry grisaille painting to produce luminous results in the finished art work.”

This is a two-day seminar and participants should attend both days. We have asked for show of interest for this because the cost for the two days could run about \$160. However, this is much cheaper than if you had to travel to her seminars. She furnishes paint and surfaces and will have brushes and paints for sale. There are 18 who have already signed up for this one.

Future Seminars Booked for Gateway Chapter:

Cheri Rol – April 25, 26, 27, 2008 (acrylics)

Mary Gibilisco – July 25, 26, 27, 2008 (Genesis Heat Set Oils)



Program Chairman,
Marilyn Hartnett

Lynne Deptula Acrylic Seminar

MARCH 23, 24, 25, 2007

Wingate Inn, 13615 Riverport Drive, Maryland Heights




Friday

StrokeWork Floral Bowl
Size: 14 diameter
Cost: \$35 members
\$40 non-members



Saturday and Sunday

Country French Chest
Size: 19X 7 X 8
Cost: \$ 70 members
\$80 non-members

 Registration Form <i>Lynne Deptula</i> March 23,24,25, 2007 9am-5pm		<i>Lynne Deptula</i> March 23,24,25,2007 9am – 5pm Wingate Inn, 13615 Riverport Drive, Maryland Heights
Name: _____		CLASSES REQUESTED Friday Floral bowl \$ _____ Saturday & Sunday Country French. \$ _____ DEPOSIT # _____ \$ _____ BALANCE DUE (February meeting 2007) \$ _____
Address: _____		
City, State, Zip: _____		
Phone: _____	Email: _____	
CLASSES REQUESTED Friday StrokeWork Floral Bowl \$ 35 (non-members \$40) \$ _____ Saturday & Sunday Country French Chest \$ 70 (non-members \$80) \$ _____ DEPOSIT \$ 35 (Non-refundable) # check _____ cash _____ \$ _____ BALANCE DUE (February meeting 2007) # check _____ cash _____ \$ _____ (Please make check payable to: GATEWAY DECORATIVE ARTISTS)		CLASSES REQUESTED Friday Floral bowl \$ _____ Saturday & Sunday Country French. \$ _____ DEPOSIT # _____ \$ _____ BALANCE DUE (February meeting 2007) \$ _____
Mail or give registration form with payment to: Marilyn Hartnett: 3116 Bear View Court, Wentzville, Mo, 63385 A non-refundable, one day deposit is required to register for one or more days. Program Chairman should be notified of any cancellation, and will provide you with a waiting list, if available. It is your responsibility to sell your Seminar space and surfaces		Your Copy



November

Jo Ann Macias, 3
Barbara Ogden, 12
Mary Jo Kumer, 13
Virginia Hauser, 24
Carolyn Swanson, 30



December

Joyce Bennington, 7
Arlene Markland, 10
Joan Love, 12
Dottie Baumgartner, 16
Mary McDevitt, 17
Jean Lindsey, 22
Judy Sloan, 27
Debbie Christenson, 28
Marilyn Hartnett, 29



Merry
Christmas

Please remember them
in your Prayers.



Our Deepest Sympathy

Donna Wessel's mother-in-law passed
away October 8.

Ronilee G. LaBree peacefully passed
away on October 15, 2006
She was a Teacher and published author
of a series of books entitled "Enjoy
the Seasons".



RX Report

Carol Ruskahr's husband recovers from cancer
surgery on his arm in September.



Kay Vuichard's grandson crushed his left
kidney when He was playing-he is doing much
better now.

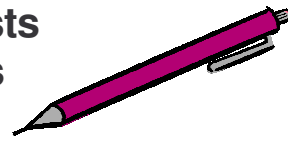


Marilyn Hartnett's sister had her leg
amputated after a long battle with her
disease.



Maisel Hey -sprained her back, she was in the
hospital is now in Rehab.

Gateway Decorative Artists Chapter Meeting Minutes September 10, 2006



The Gateway Decorative Artist meeting was held on Sunday, September 10, 2006 at the Maryland Heights Community Center. The meeting was called to order by our President, Donna Wessel, at 1:20 p.m. All board members were present with the exception of Recording Secretary, Kay Vuichard, who was out of town. In her absence, Allison Bacon was asked to take the minutes of today's meeting. Vada Galvan gave the invocation.

Jo Lair made a motion to accept the minutes as printed in the Newsletter. Motion was seconded and carried. Donna asked for a show of hands to accept the Treasurer's report. This was accepted.

Donna thanked Cathy Somraty, Lida Gillham, and Judy West for refreshments today.

Donna explained that the Gold Brush Award Committee sign up sheet was available. Any general member can sign up to serve on the committee. One member will be chosen and will be contacted privately.

Gold Brush committee will be made up of prior year's recipient as the chair, one other Gold Brush Award recipient, and one other chapter member drawn from the sign up sheet. The President will be an ex-officio member to oversee and advise. The decision to make changes in committee formation stemmed from issues from prior committees (i.e. friends choosing friends to serve on the committee and general chapter members make the nominations so the general chapter members should be involved in the decision making. If a member of the Gold Brush Award Committee is nominated they can either step down making the President the third committee member or they can give up their nomination. The question was raised as to whether all committee will be following this format for creation.

Allison reported on the Chapters Gathering in Nashville. The three main topics of the Gathering included websites, conflict resolution, and membership ideas. Anyone who painted a record for the Gathering should see Allison to receive an SDP service key for their help.

Gloria Falk provided a Retreat update. People interested in attending need to make reservations for the hotel by Wednesday, Sept. 13th or the rates will change.



They should use the 1-800 phone number. "Make It and Take Its" will start around 12:00 p.m. on Friday.

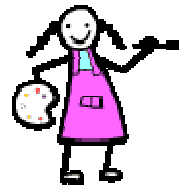
Friday's supper will be from 4:45 p.m.-5:45 p.m. Classes will start at 6:00 p.m. Tell Gloria if you have dietary needs.

Gloria announced that raffle tickets are still available for the Tulip chair that Vada Galvan painted at \$1.00 each or 6 for \$5.00.

Gloria reported that over 600 memory boxes have been mailed out. Boxes have to be at least 7" or larger and painted inside and out. There is a contest for chapters who paint the most memory boxes sponsored by Marie Gemmil, who is affiliated with SDP (she was the originator of the memory box program). First place will receive \$300 in art supplies, and second place will receive \$100 in art supplies. Individuals can also earn prizes. We won the contest last quarter. E-mail Gloria for info.

Marilyn Hartnett gave a Program report. Marilyn brought in pencils ordered from Janelle Johnson.

Marilyn checked on other less expensive locations for the Christmas Party. Since the Christmas Party is a special occasion, she feels the \$30 per ticket is a reasonable price.



Marilyn reported on upcoming seminars. Lynne Deptula seminar deposits are due now and final payment due by the November meeting. In November, sign up sheets for other seminars will be opened.

Linda Coulter's seminar may cost more. Teachers are raising prices and room fees will go up. So our fees will have to go up as well.

Josee Laferriere made a newsletter report. Josee's address on the directory cover is incorrect. Use the address given in the directory list or on the back cover of the newsletter if you have items to send to her.

Josee reported that we have a new price for the website. It will now be \$59.95 per year. The website brought members to the last seminar.

The deadline for newsletter submissions will be October 22nd.

Lorie Reece provided a membership report. There were 42 members present at the meeting 1 guest. The refreshment committee table centerpieces were given away by random drawing. Lorie thanked those who brought in door prizes and asked for more donations.

Jim and Jo Lair are having a Dorothy Dent seminar over Labor Day weekend 2007 in Wood River. Contact them for more information.



Judy Dodson reported for the By-law committee. She thanked Barb Ogden and Carolyn Dawson for committee work and Gloria and Donna for input.

Carolyn Dawson stated that if there is no objection to a proposed change we could accept it without discussion. If there is an objection, then it will be seconded, then discussed, and then voted on

Jim Lair moved to accept the By-law changes as printed in the newsletter and it was seconded. Objections were raised and the by law discussion continued.

Motion on the floor to be resolved. Jim Lair moved to adopt the by law changes as printed and amended. The motion was seconded and passed.

Cheryll Wilburn, Nominating Committee Chair, gave a report for her committee. She read Article VI #2 of our By-laws (All nominees for elected offices shall come from the general membership. All nominees must have been members for not less than 2 years immediately preceding the time of election. Nominees running for President should have previous Board experience.). She announced the following slate of officers.

Note: Bylaw revisions will be available after finalization by the Committee Chair and will be reprinted in the 2007 Directory.

Slate of Officers for 2007

President
Gloria Falk
Ellen Rohne
No nominations from the floor

Vice-President
Mary Jane Jett
No nominations from the floor

Program Chair
Mary McDevitt
No nominations from the floor

Membership Secretary
Lorie Reece
No nominations from the floor

Recording Secretary
Kay Vuichard
Allison Bacon
No nominations from the floor

Treasurer
Donna Wessel
Maureen Wasserman
No nominations from the floor

Newsletter Editor
Cindy Rupp
No nominations from the floor

Nominations will be collected until the November meeting. Contact Cheryll if you are interested in running for an office.

Mary Jo Kumer highlighted the Show and Tell items. She recognized Allison Bacon for receiving a blue ribbon in the Non-Professional Division in the Vegetable, Fruit, and Still Life Class.

Barb Ogden brought up Library business. There were books and pattern packets for sale for ten cents and these items will not be part of the library after today. There is a 1985 Chicago convention tote bag that is autographed by artists that belonged to Marilyn Fricke. It is a permanent part of the library.

Mary Jo Kumer made a motion to adjourn the meeting and it was seconded. Motion carried.

Minutes edited and respectfully submitted,
Donna Wessel



For Your Information

Research Report from your President

After the September meeting, I decided to research the SDP Bylaws with regard to duties of the President; the makeup and selection of committee members in general; and the Awards Committee in particular. The information gleaned has proven to be very enlightening. I thought that you, the members, might also be interested in what I learned. Report prepared by Donna Wessel

SDP Bylaws – 101

Article VIII, Section 1.D (Duties of Officers)

1. President – The president shall preside at all meetings of the members, Board of Directors and Executive Committee; shall coordinate activities of the Board of Directors and Executive Committee; **shall be ex-officio member of all committees except the Nominating and Awards Committees**; and shall perform such other duties as the Board of Directors may assign or which generally pertain to this office.

Article IX, Section 1, Nominating Committee

There shall be a Nominating Committee composed of five (5) members who shall hold individual membership in the Society at the time of election or appointment; three (3) of whom shall be elected by the members at the Annual Meeting and Conference for a term of one (1) year; one (1) who is selected by and from the immediately preceding Nominating Committee; and **one (1) who is appointed by the President and approved by the Board of Directors**.

Article X, Board of Directors, Section 3

Committee Liaison – **One (1) member of the Board of Directors shall be assigned by the President to chair, co-chair, or be a liaison member of each Standing Committee**, except the Nominating Committee.

Article XII, Committees, Section 1.B

Committees shall normally have a membership of five (5), one of whom shall be a member of the Board of Directors. The chairmen and committee members shall be selected by the Vice-President/President Elect (for service during that officer's term of office as President) and shall be approved by the Board of Directors.

Article XII, Committees, Section 1.E, 1 (Awards Committee) b(2)

b. There shall be not less than three (3) members of the committee who shall:

(2) **Be ineligible for re-appointment to the committee for five years** with the exception of the committee member who is selected to serve on the succeeding Awards Committee.

Conclusion: 2005-06 SDP Board did not follow past practice with regard to the Awards Committee as prescribed in SDP Bylaws.



For Your Information

SDP Award Committee History -- 102



1995-96 -- SDP President, Betsy Thomas

Past President, Donna Bryant Waterson, chaired the Awards Committee

1996-97 – SDP President, Gail Bonifay

Nancy Acker chaired the Awards Committee

Phyllis Gibbs, Board-Member-at-Large, served on the committee and was also the Board Liaison

1997-98 – SDP President, Anne Emerson

Gail Bonifay, Board-Member-at-Large, chaired the committee

Marlene Leister, Board-Member-at-Large, was the Board Liaison

1998-99 – SDP President, Mary Ann Spainhour

Mary Ellerman chaired the committee

Betsy Edwards, Board-Member-at-Large, served on the committee and was also the Board Liaison

1999-00 – SDP President, Doxie Keller

Andy Jones, Board-Member-at-Large, served on the committee and was also Board Liaison

2000-01 – SDP President, Betsy Edwards

Audrey Gusmano, Board-Member-at-Large, served on the committee and was also Board Liaison

2001-02 – SDP President, Mary Wiseman

Audrey Gusmano, Board-Member-at-Large, served on the committee and was also Board Liaison

2002-03 – SDP President, Prudy Vannier

Sheila Rouse, Board-Member-at-Large, chaired the committee and was also Board Liaison

2003-04 – SDP President, Carolyn Bacon

Peggy Harris, Board-Member-at-Large, served on the committee and was also Board Liaison

2004-05 – SDP President, Sheila Rouse

Erika Ammann, Board-Member-at-Large, served on the committee and was also Board Liaison

2005-06 – SDP President, Ann Johnson

Mary Jane Jett chaired the committee.

While the Decorative Painter lists Ann Johnson, President, as the Board Liaison, I was told by Darla Foreman that this was a misprint and that there was no Board Liaison to the committee last year. **(See note below)**

(Note) While there was no Board member on the committee, nor was there a Board Liaison to the committee last year, there should have been.

SDP was made aware of this oversight during conversations with Darla Foreman, SDP President; Cindy Forsythe, current Awards Committee Chair; and Sara Perkins, Staff Liaison to the Awards Committee in mid-September. A follow-up conversation took place with Lori Dougan October 20, 2006.

Report researched and prepared by Donna Wessel

GOLD BRUSH AWARD COMMITTEE GUIDELINES

REVISED NOVEMBER 2006

The primary responsibility of this committee is to review and evaluate the submitted nominees to determine if there is at least one member deserving of the award. Committee members, including the ex-officio member, are disqualified from submitting a nomination. In the event no nominee meets the standards of the Guidelines for Gold Brush Award Nominations, no award will be given for the current year.

1. The Gold Brush Award Committee shall consist of no less than three (3) or more than five (5) members. The previous year's recipient shall be chairman of the current year's committee. If unable to serve, then the chairman will be appointed by the President with Executive Board approval.

2. The remaining members of the committee shall be chosen as follows at the August Board meeting:
 - a. One committee member will be drawn at random by the Board from the prior Gold Brush Award winners. This person must be a current chapter member who did not serve on the prior year's committee.
 - b. Two committee members will be drawn at random by the Board from the pool of general membership volunteers. These persons must be a current chapter member who did not serve on the prior year's committee. In the event either or both people receive a nomination, they may remove themselves from the committee or refuse the nomination.
 - c. The fifth member of the committee will be a Board member, exclusive of the President, who shall also be drawn at random.

3. The responsibilities of the chairman shall be:
 - a. Disseminate information to the membership of what the award is, who is eligible for it and when it is given.
 - b. Distribute the standardized form to all members via the newsletter, as well as having extra forms available at the September and November meetings.
 - c. Collect and hold all sealed nominations until the committee convenes.
 - d. See that the James Avery Tree of Life charm and a 20" silver neck chain is ordered by the President.
 - e. Create a report to the Board regarding the committee's decision which will include the names of the committee members, the nominees, the chosen winner and their reason for the selection. This report, along with the Gold Brush notebook, shall be given to the President after the Presentation ceremony.

4. Once convened, the committee shall:
 - a. Open and review each form individually; record every nomination and check to see that no member has made more than one nomination.

GOLD BRUSH AWARD COMMITTEE GUIDELINES (cont.)

- b. The committee may choose to contact either the electors or the Membership Chair for details on chapter service. Committee members will then vote, bearing in mind the wishes of the majority and the qualifications of the nominees. At no time will personal feelings be considered.
 - c. Awards given posthumously will not be allowed.
 - d. The Board member will take possession of the nomination forms when the committee adjourns.
5. When the award recipient is chosen, the committee shall:
- a. Not reveal the name of the recipient until the award is actually given. Since a Board member could be named, the Board will not be informed of the recipient's name prior to the Presentation ceremony.
 - b. Write a speech about the recipient stating her service and qualifications. Information used in this speech will come from the nomination forms and verified with GDA records.
 - c. The speech and the award will be given at the annual Christmas Party. If recipient is not in attendance at the Christmas Party the Presentation will be held at the next meeting that she is in attendance.
A printed and framed copy of the speech will also be presented to the recipient.
 - d. Five additional copies of the speech will be distributed as follows:
 - i) One for the President for the Chapter's Gold Brush Award notebook.
 - ii) One for the Gold Brush Award Committee notebook.
 - iii) One for the Newsletter Editor for publication in the next newsletter.
 - iv) One for the Website Editor if different than the Newsletter Editor.
 - v) One for the Chapter Historian
 - e. Remind the President to order a brick in the recipient's name from the DAC.



List of past Gold Brush Awards

1987	Joycelynn Smutz	1997	Gloria Falk
1988	Judi Krause	1998	Jan Rosenberg
1989	Bonnie Stout	1999	Mary Jane Jett
1990	Gerry Klein	2000	Ellen Rohne
1991	Bobbie Gray	2001	Ruth Ann Thompson
1992	Arlene Siebert	2002	Toni Dosser
1993	Barb Ogden	2003	Debbie Christenson
1994	Carolyn Bacon	2004	Laura Heathcote
1995	Jeanne Abraham	2005	Mary McDevitt
1996	Annette Dozier		

The Gold Brush Award

What: ***The Gold Brush Award*** is the highest honor bestowed upon a Chapter member. It is given to acknowledge outstanding contributions to the Chapter as well as dedication to the art of Decorative Painting.

Who: It is given to a member who sets an example for all of us, one whose dedication is above the norm. She promotes the interest the Chapter and stimulates interest in Decorative Painting both at Chapter functions and outside of Chapter activities. She gives unselfishly and without a thought of personal gain. Her contributions need not have been made just in the past year, but are of a long-standing nature.

When: ***The Gold Brush Award*** is given to only one member annually (not necessarily every year) and is a once in a lifetime honor. The award is presented at the December Christmas Party Meeting without prior announcement of the recipient.

How: To nominate someone for this high honor, fill out the form below. The Committee will research your nominee's qualifications based on information you and others give us. If you know of a specific service your nominee has performed, please state it briefly. If more information is needed a Committee member will contact you.

Please be conscientious in your choice and remember that this is not a popularity contest. A nomination box will be set up at the September and November meeting with extra forms available. **Please place your signed form into a sealed envelope and either drop in the box or mail to:**

Gold Brush Award 2006
Mary McDevitt
941 Millwood Drive
St. Peters, Mo 63376

FORM MUST BE SIGNED TO VALIDATE NOMINATION

Each chapter member is allowed to nominate only one candidate, which will be kept confidential.

My Nominee for *the Gold Brush Award* in 2006 is:

Reason: (State briefly - Specific Chapter and or community service)

Your Name: _____ Phone No: _____

Signature: _____

treasurer

19



Official Ballot

GATEWAY DECORATIVE ARTISTS

Elections of Officers for 2007

Please vote for only one person per position by placing an X in the box.

President:

Gloria Falk

Ellen Rohne

Write In

Vice President:

Mary Jane Jett

Write In

Program Chairman:

Mary McDevitt

Write In

Membership Chairman:

Lorie Reece

Write In

Recording Secretary:

Kay Vuichard

Write In

Treasurer:

Donna Wessel

Maureen Wasserman

Write In

Newsletter Editor:

Marilyn Hartnett

Write In

PRESIDENT

Gloria Falk:

I would like to ask you to show your support for me, **Gloria Falk, for President of Gateway Decorative Artists.**

During my years as a member of our chapter (30+), many of you know that I have served in several key positions and on a wide range of committees.

Most recently, I am completing my term as Vice President. Under my leadership, we have achieved:

1. Completing over 600 memory boxes, as of Oct. 19, for the Memory Box Program.
2. Donated over \$1250 in goods and cash to the Turning Point Women's Shelter.
3. Worked with the present board to review and revise guidelines for the various standing committees of our chapter.
4. Served as Historian for the chapter and have finished updating our scrapbooks up to the present time with most of our activities including seminars, workshops, retreats and meetings.
5. Worked with the committee on the most recent By-law revisions.

In addition, I coordinated our successful 2006 retreat with almost 40% of our membership participating.

My commitment to decorative painting reaches beyond the boundaries of Missouri. I have been an active participant of several SDP committees in the past, and most recently working on the Education Committee for the year 2006-07.

If I am elected President, I will work with the board to make every effort to promote the activities within our chapter with the hope of increasing our membership. I would like to encourage everyone to get to know each other better with the hope of building strong friendships. It is important for the health of our chapter to "connect" with people with similar interests. We can have fun and be creative at the same time.

Together as a team we CAN make a difference.

Please cast your vote for me – **Gloria Falk, for President.**

Ellen Rohne:

I have owned my own business for 26 years, taught classes for 20 and been a member of Gateway for 19 years. I have served as your Vice President and chaired Retreat 3 times and co-chaired our Chapter Table at the National Convention in '93. I have served on and chaired countless committees.

I am well aware of how the chapter functions and how duties are accomplished. Owning my own business and teaching have given me excellent organizational and listening skills. Every job I take on is done with much thought and planning to complete the task at hand.

My goal as your President is to reunite us as a painting community, have a more open and better working relationship between the board and our members. Let's do put some fun back into our meetings!

Please vote for Ellen on Nov. 12th.

Note: All members will have to sign to receive a ballot.



GATEWAY DECORATIVE ARTISTS ELECTION

VICE-PRESIDENT

Mary Jane Jett:

Not Provided

PROGRAM CHAIRMAN

Mary McDevitt:

Not Provided

MEMBERSHIP CHAIRMAN

Lorie Reece:

Hi my name is Lorie Reece. I am once again running for Membership Chairman. Most of you know me but for the few that don't, here is a brief summary of my exciting job.

I work full time for an Insurance brokerage firm and have been in the insurance business for 30+ years. I am in charge of 100 plus accounts dealing with new business, customer service and renewal of Health plans. I have enjoyed my four years with Gateway, meeting many fun and interesting members. I have enjoyed being the membership chairman and learning just about everyone's name!. It has been fun and in some ways challenging, becoming more involved with the chapter. I would once again love to have the opportunity to be your membership Chairman! Please consider me and Happy voting.

RECORDING SECRETARY

Kay Vuichard:

I have been a member of Gateway 7 years. Served one year as Membership chair and one year as Recording Secretary. The type of painting I enjoy most is Landscapes in oil, with still life coming in a close second. I attended one Convention in Indianapolis. I think Gateway and SDP are wonderful for both the social aspect and learning new techniques. I will do my best to make Gateway a growing organization.

TREASURER

Donna Wessel:

My last twenty years of employment was spent working for Schnucks, first as a checker (7 years) and then as an office cashier and closing bookkeeper (12 years). I became a Gateway member in 1998. My first service to the Chapter began in 2001 as Nominating Committee Chair; 2002 & 2003 as Recording Secretary; 2005 & 2006 as President. I am currently running for Treasurer. While not necessary to hold the position, I am quite familiar with computers. Utilizing a bookkeeping software program will enable me to quickly and accurately record Chapter financial transactions. Attention to detail and a desire to serve are two qualities that served me well in the offices formerly held. I will also bring those assets to the office of Treasurer. Please vote for me – Donna Wessel for Treasurer.

TREASURER (CONT)

Maureen Wasserman:

I have been a member of GDA and I have been painting for 23 years. I have served on the board for over 8 years; 6 1/4 years as treasurer and 2 years as the last elected parliamentarian. I have served GDA in the past and I would like to serve again as the chapter treasurer.

Thanks, Maureen Wasserman.

NEWSLETTER EDITOR

Marilyn Hartnett:

Married 52 years to Larry; 3 children, 8 grandchildren, 4 great-grandchildren. Hobbies are art, music and golf. Received BA in Business Management from Webster University. After 30 years with Monsanto Company, she retired in 1996 from Monsanto Company as Manager, Corporate Contributions. While employed, served on boards of People's Health Center, Women's Self Help Center, Metropolitan Association for Philanthropy, and President's Advisory Girl Scouts St. Louis. She has been a member of SDP and Gateway Decorate Artists chapter for 7 years, and has served as Program Chair for the past two years.

ELECTION

As you know we will hold our annual election of officers in November. According to:

Article VI- Officers and Their Election

2.) All nominees for elected offices shall come from the general membership. All nominees must have been members for not less than 2 years immediately preceding the time of election and have attended five (5) meetings. Nominees running for President should have previous Board experience.

This came out of the 2003 by-law revisions. Nominations will be accepted from the floor for write-in Candidates before the voting takes place.

If you are unable to attend the November meeting and would like to have an absentee ballot, send me a self-addressed, stamped envelope requesting a ballot. Requests should be made as soon as possible so that it can be mailed back postmarked by Nov. 6th to allow enough delivery time to get to me.

Send to:
Cheryll Wilburn
23474 Wild Horse Farms Rd.
Warrenton, MO 63383

2007 SDP Membership form

1. Member profile (Please print name and address as it should appear on the mailing label)

Name _____ Membership # (if renewal) _____
 Household Member Name _____ Membership # (if renewal) _____
 Business Name (if joining as a Business Member) _____
 Mailing Address _____
 City _____ State _____ Postal Code _____ Country _____
 Email _____ Website _____
 Phone (_____) _____ Fax (_____) _____

I am a member of at least one SDP Chapter and I wish to receive SDP e-mail chapter communication.

2. Membership Categories (Check one, please)

U.S.

\$40 Individual (\$45 after Dec. 1)

\$70 Business (\$75 after Dec. 1)

3. Business & Teacher Directory Resource Categories (optional)

Business members, Check all boxes that apply for the Business & Teacher Directory. Listings are FREE with your business membership.

- | | |
|---|---|
| <input type="checkbox"/> Author | <input type="checkbox"/> Retailer |
| <input type="checkbox"/> Distributor/Wholesaler | <input type="checkbox"/> Teacher |
| <input type="checkbox"/> Home Studio | <input type="checkbox"/> Travel Teacher |
| <input type="checkbox"/> Manufacturer/Importer | <input type="checkbox"/> Other |
| <input type="checkbox"/> Publisher | |



4. Payment

Make checks payable to: SDP, 393 N. McLean Blvd., Wichita, KS 67203-5968. For faster service, use MasterCard or VISA and call (316)269-9300 ext. 105 or fax application to: (316)269-9191 Join online at www.decorativepainters.org

VISA MasterCard Exp. Date _____ Phone _____

Card Number _____ Signature _____

YES! This is a Gift Membership from _____ Memb.# _____

DUES POSTMARKED AFTER DEC. 1, REQUIRE AN ADDITIONAL \$5 POSTAGE/HANDLING FEE (DOES NOT APPLY TO NEW MEMBERS)

Your national dues need to go directly to SDP



Membership in this Chapter is open only to persons who are dues-paying members to the SDP



2007 Gateway Decorative Artists membership form

Name _____
Last First Spouse New Member Renewal

Address _____

City _____ State _____ Zip code _____

Phone Number _____ Email _____

Birth Date : Month ___ Day ___ SDP Membership # _____ (include a copy of SDP card)
 Member of other chapters: _____

Check all that apply:

Individual Member Teacher Business Member Name of shop: _____

Certification: MDA CDA TDA

Preferred Painting Medium: Oil Acrylic Watercolor Color Pencil Pen & Ink Charcoal's

Pastel Favorite Artists: _____

What year did you start painting? _____

Annual dues are \$20 per year, payable by Dec 31, 2006.

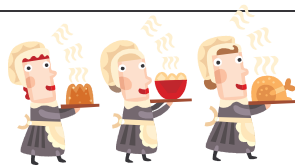
Please make check payable to: **Gateway Decorative Artists**

Mail to: **Lorie Reece 1092 Arnold Tenbrook Rd, Arnold MO 63010**



Checklist For November Meeting

- ❑ Bring your basic painting supplies.
- ❑ Bring your projects from retreat to Show and Tell.
- ❑ Bring wish items for Turning Point Shelter.
- ❑ Memory boxes – painted and ready to ship.
- ❑ Give Gold Brush Award envelop seal to Mary McDevitt
- ❑ At the table:
 - Sign up for Lynne Deptula seminar.
 - Sign up for Christmas Party.
 - Renew your membership with Lorie Reece.



The Farmington's ladies will be Providing the Refreshments in November

Great advertising opportunities

Ad	Size	Members		Non-Members	
		issue	year	issue	year
Full Page	8 1/4 X 10 3/4	\$ 10.50	\$ 50.00	\$ 13.25	\$ 62.50
Half Page	8 1/4 X 5 1/4	\$ 8.00	\$ 37.00	\$ 10.00	\$ 46.25
Quarter Page	4 X 5 1/4	\$ 5.50	\$ 25.00	\$ 6.50	\$ 31.25
Business card format	4 X 2 1/2	\$ 3.00	\$ 12.50	\$ 3.75	\$ 15.50

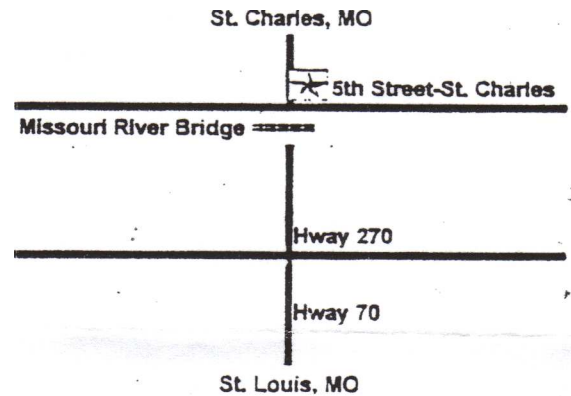
Personal messages are \$.05/word

All ads must be paid for in advance of publication.

Ads should be camera ready, which means typed, artwork completed and ready to print. Gateway Gazette is good advertising for those wishing to advertise their business, shop, classes, wood, painting supplies or other services.

For more information call Josee Laferriere 636-327-9060 or email her at jlgate_art@hotmail.com

Directions to the Heart of St. Charles



From interstate 70 westbound: Take the Fifth Street exit (exit 229B), stay in the exit lane and then make a right turn into the first driveway on right (horseshoe turn to the right) and follow around to banquet center.

From Interstate 70 eastbound: Take the fifth Street exit (exit 229) and go left off the exit ramp. Get into right hand lane, proceed past the flashing light, then make a right turn into the first driveway on the right. (horseshoe turn to the right) and follow around to banquet center.



I am editing my last Newsletter with sadness. I want to thank everyone who believes in me. When I accepted this office two years ago, I said to myself "in what do I embark?". I had no experience on the board, never edited any newsletters, and I can't speak English correctly. So what! I really enjoyed doing it. It was a good experience. I had the privilege to work with an excellent board who simplified my job. These past two years gave me the opportunity to meet more members and have a better knowledge and understanding of the chapter. If you are afraid to give your name to run for an office, don't be. You will come out growing of this experience. If I can do it, you can do it, believe me.

Josée Laferrière.

The Gateway Gazette is published five times a years by Gateway Decorative Artists Greater St. Louis chapter, a not for profit organization formed in 1974 to stimulate interest in and appreciation for the Art of Toile and Decorative Painting

TO :

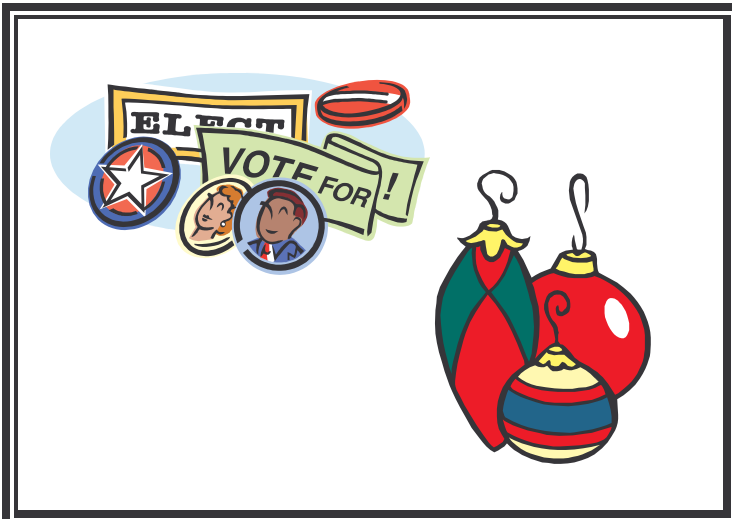
FIRST CLASS POSTAGE



Newsletter Editor:
JOSEPH LAFERRIERE
2222 Blue Lake Dr.
Wentzville, Mo 63385
jigate_art@hotmail.com



Gateway Gazette



CHAPTER MEETING
November 12, 2006

Election &
Ornament Paint-in