



Gateway Gazette

www.gatewaydecorativeartists.com

Volume 34 Issue 2

St. Louis, Missouri

April/May 2007

CHAPTER MEETING

What's Inside

Calendar	2
President message	3
News from your VP	4
Charity	5
Seminars	6
Members News	7
Secretary's Report	8
Treasurer's report	10
Checklist	12

April 15, 2007

Sunday: 1:00 P.M.

At Maryland Heights Center

Meeting project

Grapes on a Green Wine Bottle

Taught by Ellen Rohne CDA

Supplies & Preparation

Cost: \$3 for pattern & photo

1. Purchase a nice bottle of wine in a green bottle.
2. Relax and enjoy the wine and a hot bubble bath.
3. After finishing the wine, soak the bottle in hot soapy dish water. Remove the labels and adhesive residue. I sometimes have to use a razor blade.
4. Bring the empty bottle, a 5/8" dauber, white transfer paper and your regular acrylic painting supplies.

I will have a few bottles you may purchase for \$1



*Chapter of
National Society of
Decorative Painters*

www.decorativepainters.org

This year we are reserving tables for the paint-in's. You may set your painting supplies in a spot at one of those tables and be seated at another.

Refreshments

Jean Ellison
Carol Ruffkahr
Peggy Araki
Joyce Miller
Dottie Baumgartner
Ingrid Oertli

***Don't miss April
meeting***

Silent Auction

Vote on the retreat Projects

Paint-in

*Opportunity to buy the new
set of Delta Colors.*

April 27,28,29, 2007

Scheewe
Demonstration
Weekend

June 23,24 2007

Janelle Johnson
Colored Pencil
Seminar

**BOARD OF DIRECTORS
2007**

President

Gloria Falk 636-561-6623
president@gatewaydecorativeartists.com

Vice-President

Judy Dodson 636-936-0384
vicepresident@gatewaydecorativeartists.com

Program Chairman

Marilyn Hartnett 636-332-0839
program@gatewaydecorativeartists.com

**Membership Secretary and
Publicity**

Lorie Reece 314-971-0190
membership@gatewaydecorativeartists.com

Recording Secretary

Kay Vuichard 636-441-9438
Twofrogs63@yahoo.com
secretary@gatewaydecorativeartists.com

Treasurer

Donna Wessel 314-428-8226
treasurer@gatewaydecorativeartists.com

Newsletter Editor

Josée Laferrière 636-327-9060
newsletter@gatewaydecorativeartists.com

Parliamentarian

Carolyn Dawson

Area Representatives

South County

Joan Love 314-842-7288

Illinois

Lida Gillham 618-656-9294

North County

Julia Lamborn 314-731-3561

West County

Maureen Wasserman 636-227-2843

If you have anything you would like to pass on to the Chapter, such as illnesses, congratulations etc. you may call one of these people or your membership chairman, Lorie Reece

MARK YOUR CALENDAR

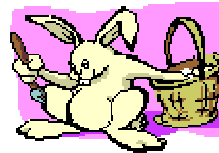


2007 Scheduled Events

April 15	Chapter Meeting	Maryland Heights Center
April 27,28,29	Scheewe demonstration Weekend Acrylic and Watercolor	Wingate Inn 13615 Riverport Dr., Maryland Heights.
May 12	Board Meeting	Gloria's Home
June 10	Chapter Meeting	Maryland Heights Center
June 23,24	Janelle Johnson Colored Pencil Seminar	Wingate Inn 13615 Riverport Dr., Maryland Heights.
August 4	Board Meeting	Gloria's Home
August 25-26	Linda Coulter Grisaille seminar	Wingate Inn 13615 Riverport Dr., Maryland Heights.
September 9	Chapter Meeting	Maryland Heights Center
October 12,13,14	Retreat	
October	Board Meeting	Gloria's Home
November 11	Chapter Meeting	Maryland Heights Center
December	Christmas Party	To be announced

Upcoming Events

April 25,26,27, 2008	Cheri Rol, Acrylic	To be announced
July 25-27, 2008	Mary Gibilisco, Genesis Seminar	To be announced



Location

All chapter meetings will be held at the Maryland Heights Center unless noted otherwise.

From 270:
Dorsett Road West
Right on McKelvey Rd.
Right on Ameling
Left on McKelvey
2344 McKelvey
314-434-1919



Message From Your President

STANDING COMMITTEE CHAIRS 2007

Nominating Committee
Cheryll Wilburn

Refreshments
Jean Ellison

Gold Brush Award

Librarian
Barb Ogden

Historian
Gloria Falk

SPECIAL COMMITTEE CHAIRS 2007

Hospitality
Lorie Reece
Jeanette Bishop
Lee Zimmer

Webmaster
Josée Laferrière

**Memory Boxes and
Charity**
Judy Dodson
Cheryll Wilburn

Christmas Party
Marilyn Hartnett

Dear Members,

Can you believe how fast this year is going? It's April already and Tax Day is around the corner. Time just has a way of flying by.

We need to appreciate every day we have – as life is just too short and you never know what tomorrow will bring. So live life to the fullest and without conflict-it's the best thing for you. How is it that the saying goes?.....

LAUGH OFTEN – LIVE MUCH!!



Some of us just finished painting with Lynne Deptula and I have to say the projects were beautiful. The photos we had did not do them justice. I hope others will bring their pieces in for the Show n' Tell Table. We certainly had some creative wood pieces.

Speaking of wood pieces – we recently became heir to a former member's "STASH". She wanted to give it to us (who would appreciate it) and to help raise money for the chapter. The money taken in is going to be split between Retreat & the Memory Box Program. Any money left over after Retreat will be transferred into the Memory Box Program.

In April we are going to be bringing the wood & tin ware to the meeting. We hope to have a successful SILENT AUCTION. Each piece will have a starting price and you will have the opportunity to bid on them. So bring money....in the form of cash or check. **Be prepared as there are some very nice pieces.**

Ask your painting friends to join you – you won't want to miss this meeting and sale. Besides you get to vote on the Retreat projects too!!

I am hoping that you are enjoying the beautiful days we have had lately. God bless and see you at the meeting.

Gloria Falk, TDA
President



**Deadline for your
articles
for the next Issue:**

May 20, 2007

RETREAT RETREAT RETREAT

NEWS FROM JUDY DODSON, VICE PRESIDENT

Retreat will be held on October 12,13, & 14, 2007. (MARK YOUR CALENDARS).

We will be at The Holiday Inn South I-55 and Butler Hill Road. This is the same location as two years ago.

RETREAT SURVEY RESULTS

1. The majority of the members wanted to be closer to St. Louis.
2. The majority of the members liked the schedule of only four time slots for classes.
3. The cost or location was not a major factor for those members not attending last year.
4. The Make-It Take-Its, and their schedule was very good



Come **BREAKAWAY**, Be Refreshed, Educated, and carried away for the entire weekend at Retreat. We will experience a “Palette of Seasons” in 3 wonderful, fun filled days. This is a time for old friends to get re-acquainted, make new friends, and learn new techniques from a group of talented teachers.

PROJECTS:

We will be voting on the class selections for retreat at the April meeting. Make sure you attend this meeting so that you can have a say in what projects will be taught this year at retreat.



To any member who may have changed their mind, and wishes to submit a project for this years retreat, it is not too late. Give me a call and we can get you all the information.

MAKE-IT/TAKE-IT'S

We will need at least 2 make-it take-it's for the weekend. I would like for anyone interested in teaching a make-it take-it (MITI) at retreat to get in touch with me at the April meeting or before. Teaching a MITI is a great opportunity to break into teaching, and show your talents. These need to be taught in an hour to hour and a half. The cost should be no higher than \$5.00, and can be less. These will be scheduled on Friday afternoon, according to the wishes of the majority of members from the survey.

COLORED RETREAT BOOKLETS:

You will be able to put in your order for a colored Retreat booklet at the April meeting. These will cost \$2.00 for printing. I will need for you to pay for these when you place your order at the April meeting. If you want a colored booklet but are unable to attend the April meeting, please give me a call and I will order one for you. Otherwise black and white copies will be ordered. All the booklets will be distributed at the June meeting, when the projects chosen will be on display.



COMMITTEES:

Please remember to volunteer to be on a committee for Retreat. The committee's are decorations, name tags, entertainment, and attendance prizes, to name just a few. I will have a sign up sheet available at the April meeting.

TEACHERS:

Please bring your projects at noon so we can photograph them, and have enough time to get them set for the class selection process. Please remember if your piece needs any props, or stands, bring them. Thanks so much for all you do to make Retreat a success each year.

Charity Corner

MEMORY BOXES

Thanks to the following members who returned finished memory boxes at the February meeting.

Marilyn Hartnett
Joan Love
Marilyn Mc Donald
Joyce Miller
Ann Mohrman
Karen Steiner



REMINDER: to all the members that have signed out Memory Boxes to paint: Please do not sign out for anymore before you return the ones you have now, and try to return those at the April meeting. The program is in desperate need to fulfill the commitment of boxes. We need everyone's help.

Remember, if you don't have the time or are unable to paint a box-you can always donate money to help defray the cost of shipping, or the purchase of more boxes.

Thank you ladies- your help is greatly appreciated.

ATTENTION MEMBERS:

We will be holding Memory Box paint-ins on the 1st Tuesday of the month, every month, starting in May. These will be held at Lindell Bank and Trust Company at 5500 Mexico Road, St. Peters, Mo. This is across from the St. Peters City Hall. We will be open for painting, preparing, and varnishing boxes from 9:00 a.m. to 4:00 p.m. Members need to bring their lunch, and basic painting supplies. The chapter will provide the boxes and the paint. Gloria will be teaching a cute little bear angel for the first pattern. I would also like to thank Mary Jo Kumer for securing the bank location



Special Thank You's are in order to Janie Parisi, a past member, for her dedication to the Memory Box Program. She continues to send letters to other companies she does business with, asking for donations to the program. We have just received a \$300.00 check from one of those companies. Our other Thank You goes to Patti Bilyeu, another past member, who has just given us her 36 finished boxes. These are already on their way to needy hospitals. A thanks seems so inadequate for all their hard work, but we Thank You from the bottom of our hearts.

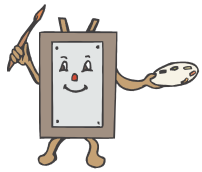


Turning Point

The wish items needed this month are:

SOS pads
Laundry soap
Hard floor cleaner
Toilet Paper
Dish soap (ie: Dawn, Joy)





Seminars

Scheewe Johnson

The Lynne Deptula seminar is behind us and we are looking forward to the weekend of April 27-29 for some fun with a certified Susan Scheewe teacher, Trisha Tyler. The seminar begins on Friday evening from 6 p.m. to 9 p.m. With an introduction of the teacher and products, tracing patterns, prepping surfaces and applying basecoats and filling the watercolor palette. On Saturday there will be two acrylic projects, and an easy watercolor fun bonus project. Sunday, we'll do two watercolor projects. At the close of the seminar on Sunday (around 2:30 p.m.) the paint products used during the seminar will be gathered and raffled to all attendees. The cost of this seminar which includes all surfaces is \$93 which is payable at the April meeting.



June 23-24, we welcome back Janelle Johnson for a colored pencil seminar and the project for this can be seen on our web site and a photo will be displayed at the April meeting.

SUPPLY LIST FOR SCHEEWE SEMINAR

- Spray Bottle
- Q-tips
- Scissors
- Water Container
- Paper Towels
- Waxed Palette
- Watercolor Palette with minimum of 12 places (circular plastic palette with 10 holes And large center hole with lid works also).
- Notebook and Pencil/Pen
- Background Brush/or Sponge Brush
- Masking Tape
- Extra fine sandpaper or sanding disc
- Normal painting supplies
- And a Positive Attitude!

We are going to have lots of fun and learn new things.

Coulter

Linda Coulter will be with us August 26-27 to teach us one of her beautiful canvases. This is a two-day seminar and the cost is \$160. If you plan to attend this seminar, please make final payment by August 1. There will be a photo display of projects which you can vote for if you are planning to attend the seminar.

2008 seminars

We have Cheri Rol scheduled for April 2008 and Mary Gibilisco in July 2008. Hopefully we will be able to schedule two Saturday workshops in 2008 as well.

If you have any questions, please feel free to call Marilyn Hartnett (636) 332-0839 or email at program@gatewaydecorativesartists.com

HAPPY BIRTHDAYS

April

May



Julia Lamborn, 9
Pat Hoffman, 11
Jo Lynn Lair, 26
Lida Gillham, 28

Gloria Falk, 3
Joanne Goers, 3
Peggy A. Araki, 4
Jean Hoffman, 5
Carolyn Dawson, 15
Laura Heathcote, 22
Kay Peele, 29



Officers Corrections

Laferriere, Josee 636-327-9060	2222 Blue Lake Drive jlgate_art@hotmail.com	Wentzville, Mo 63885
-----------------------------------	--	----------------------

Membership Corrections

Mayo, Judy	dimjam@earthlink.net	
Dodson, Judy	Judy.dodson@sbcglobal.net	
Mottert Justine	Does not have email	
Gillham, Linda	lidagillham@charter.net	
Rufkahr, Carol	carolrufkahr@yahoo.com	
Rohne, Ellen, CDA(T) 636-240-1684		

Additional members in the directory

Gallen, Maura 636-230-0549	188 Spring Oaks Dr. Paintergal3@hotmail.com	Ballwin, Mo 633011 Birthday: 01-26
Jackson, Norma 618-235-6851	1501 Eleanor Drive	Swansea, IL 62226 Birthday: 04/22

New Members

Peele, Kay 417-883-1570	911 East Woodland Street kpeele@mchsi.com	Springfield, MO 65807 Birthday: 5-29
Meyers, Maralynn 573-6872037	20754 N Barnes Road mara@arohne.com	Centralia, MO 65240 Birthday: 02-5



New Members
Kay Peele
Maralynn Meyers



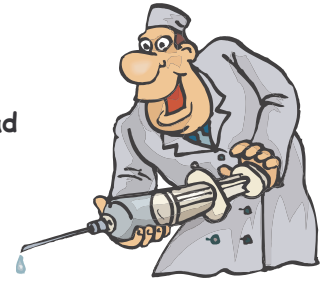
*Our Deepest
Sympathy*

*Marilyn Hartnett's
Brother-in-law passed away,
February 12, 2007.*

GET WELL

Jean Hofmann had
knee surgery in
January

Jo Lair recently
underwent hernia surgery. She is home
recuperating.



Jean Rogenhofer fell and broke her arm.
She will have limited use for 6 weeks.

Other seminars around us

Central Illinois Decorative Artists-
Decatur, IL
Trudy Beard - September 14-15 2007
Contact: Mary Jane Zook (309-473-2034)
or
mzook@aol.com

Jo Lair's Studio
Dorothy Dent - May 25-28 2007
Contact: Jo Lair (618-258-9905)



**I want to give
thanks to
Marilyn**

**Hartnett for all of the hard work
she goes through to make our
seminars go off without a
hitch. Marilyn, we really
appreciate all you do for us.
Thank you. You are a GEM!**



GATEWAY DECORATIVE ARTISTS CHAPTER MEETING MINUTES FEBRUARY 4, 2007

The meeting was called to order at 1:12pm. by President Gloria Falk and the invocation was given by Norma Jackson.

Old business, Judy Dodson read additions to the by-laws that were not included in the September minutes, which are as follows.

Article VII #1h

Appoint all Standing and Special Committee Chairs, with Board approval. The President may serve in an unofficial capacity on all committees with the exception of the Nominating Committee and Gold Brush Award Committee.

Article IX #1a

Nominating Committee - This committee shall consist of no less than three (3) or more than five (5) members selected by the Committee Chair who shall prepare a slate for the election of officers. The Nominating Chair shall be responsible for printing and issuing ballots. Nominees must be members, and meet the qualifications as stated in ARTICLE VI 2 and have given prior consent to the Nominating Committee. The chair is responsible for checking with the Membership Secretary to verify that nominees are eligible members. The Chair will prepare a list of eligible voting members and prepare a sign-in list for voter sign-in the day of election. All ballots and tally sheets shall be given to the current President immediately following the voting to be held until after the new year's election. Keep accurate records of committee expenditures and receipts for not less than the prior three (3) years.

With the above additions the September minutes were approved by the membership. The November Meeting Minutes as printed in the February Newsletter were approved.

There were some questions from the floor concerning the entries in the Treasurer's Report in the Newsletter. The total receipts in the membership dues was not a multiple of the cost per members and the total membership and the receipts from the Christmas Party was not a multiple of the number of members attending. Donna Wessel will review the entries in these categories and the results will be printed in the next newsletter.

Gloria gave a brief overview of the DAC and our history of donations to them. Dottie Baumgartner made a motion that we donate \$100.00 to the DAC and the membership agreed by a show of hands.



Judy Dodson explained about our charity "Turning Point" and how they receive no help from outside sources, we will be donating to them again this year, and we will continue to donate Memory Boxes to hospitals. Cheryl Wilburn will set up the table and sign-out/in sheet and Gloria will arrange shipping. The need for Memory Boxes is great so we need to continue to paint. Judy called for the "Retreat Surveys" to be completed and turned in so that members preferences can be known. Teaches who want to submit a project should do so before March 31, 2007 and have a completed display piece ready for display at the April meeting.

Marilyn Hartnett gave a brief rundown of the up coming seminars and reminded us again that the more members who attend the lower the individual cost. SDP has scholarships that Chapters and individuals may apply for. By a show of hands the members voted to have Marilyn draft an application letter for a Chapter scholarship.

Lorie Reece gave a membership report and the chapter has 63 members, 43 were present at the meeting and there were 5 guests. Door prizes Debbie Finklang won a shirt painted by Gloria Falk. Jeannie Abraham and Barb Ogden won the other prizes. The table decorations went to Norma Jackson, Lovella Mauer, Cindy Rupp, Judy Mayo, Carol Rufkar, Cheryl Wilburn, Vada Galvan and Jeannie Abraham.

The Chapter held a jewelry sale to reduce our inventory of pins, charms, and bracelets.

Jean Ellison thanked Liz Geers, Nancy Wymer, Barb Ogden, Lovella Mauer, Eleanor Denton and Ellen Rhone for the refreshment at the meeting. The board members volunteered to supply refreshments at the September meeting and the Galvanettes volunteered for the November meeting.

Gloria Falk thanked all who served on committees last year and handed out service pins. Jenny Ellison was recognized for receiving the Girl Scouts Gold Award and scholarship to Lindenwood University for her Memory Box Project.

Mary Jo Kumer made the motion to adjourn and the business meeting adjourned at 1:54. Karen Steiner taught us all how to prepare and paint on dried leaves.

Minutes Respectfully submitted by



Kay Vuichard.

Final Expenses - Deptula

Teaching Fee \$500/day/25 students	\$ 1,500.00
(\$20/student over 25 up to 35)	
Meals	\$ 41.71
Travel	\$ 112.80
Lodging	
Staying with Mary Jo Kumer so no real charge for lodging.*	\$ 300.00
Donuts	\$ 18.34
Meeting Room	\$ 319.95
Printing of Patterns	\$ 15.64
TOTAL Cost of Seminar	\$ 2,308.44
Income from Seminar	\$ 2,320.00
Total w/o lodging*	\$ 2,008.44
Income over costs	\$ 311.56

Number of paying students per day: 22

IMPORTANT NOTICE



Tracy Kocher from Red Rooster Crafts in Farmington, will be bringing the 19 NEW colors of Delta Paints at the incredible price of \$20 (Tax Included)

If you want to be assured of getting a set of the colors, call me ahead of time and I will bring a set just for you.

A Basket of Discontinued paint colors will also be available at yard sale prices.



I will also be bringing brushes for SALE!!!

Call at 573-756-8060 or
Email: theredrooster@sbcglobal.net

IF THERE IS ANYTHING IN PARTICULAR YOU HAVE BEEN TRYING TO FIND, CALL ME AND I WILL BRING IT TO YOU.

Red Rooster
Quality Handmade Crafts
Custom Framing
Counted Cross-Stitch
Art & Craft Supplies
Patterns & Fabrics

Hours: Monday thru Saturday 9A.M.-5P.M.
Tracy Kocher 102 S. Jackson St.
(573) 756-8060 Farmington, MO 63640
email: theredrooster@sbcglobal.net

Treasurer's Note

Questions were asked at the February meeting concerning the 12/31/06 Treasurer's Report. A review of the backup data determined some entries in the accounting books had been placed in categories that did not accurately reflect their true nature. The resulting changes altered the amounts in some categories. A revised year-end financial statement is published in this newsletter.

As Marilyn explained at the meeting, the lack of member attendance at the Christmas Party accounts for the higher than expected expenses to the Chapter. The extra meals paid for by the chapter that were not consumed on site were placed into storage containers and donated to the Women's Center in St. Charles. This dollar amount was then transferred from the Christmas Party expense into Gifts and Donations.



I will be more than happy to answer any questions you might have regarding the Treasurer's Report. You can reach me via phone, letter or email. However, I respectfully request your courtesy in allowing me sufficient time to research the facts in order to provide an accurate response as soon as possible. Thank you for your consideration in this regard.

Donna Wessel

GATEWAY DECORATIVE ARTISTS REVISED TREASURER'S REPORT For Period Ending 12/31/2006

BANK BALANCE AS OF	<u>1/1/2006</u>	\$ 9,022.61
INCOME		
MEMBERSHIP DUES (\$1020 Dep. 2005)	\$ 700.00	
CHAPTER TABLE	\$ 64.50	
CHARITY	\$ 15.00	
CHISTMAS PARTY	\$ 900.00	
GIFTS & DONATIONS	\$ -	
INTEREST INCOME	\$ 31.63	
MEMORY BOX	\$ 405.00	
DIRECTORY ADS	\$ 10.00	
RETREAT	\$ 4,179.00	
SEMINARS (\$1875 FOR 2007)	\$ 4,204.00	
WORKSHOPS (\$465 Dep. 2005)	\$ 315.00	
MISCELLANEOUS	\$ 158.00	
S D P AUCTION	\$ -	
INCOME	\$ 10,982.13	<u>\$ 10,982.13</u>
TOTAL INCOME		\$ 20,004.74
LESS EXPENSES PAID		<u>\$ 17,592.45</u>
12/31/2006 TOTALS		\$ 2,412.29
CERTIFICATE OF DEPOSIT		\$ 5,515.73
CERTIFICATE OF DEPOSIT		<u>\$ 9,179.75</u>
TOTAL FUNDS		\$ 17,107.77

<u>Year Ending</u> <u>12/31/2006</u>	<u>Corrected and</u> <u>Revised 3/10/2007</u>	
BANK CHARGES	\$ 180.00	\$ 180.00
BOARD EXPENSE	\$ 500.00	\$ 607.77
CHARITY	\$ 100.00	\$ -
CHRISTMAS PARTY	\$ 1,500.00	\$ 1,469.20
	(\$600 Transferred to Gifts and Donations)	
GIFTS & DONATIONS	\$ 500.00	\$ 1,174.93
MEETING ROOM RENTAL	\$ 900.00	\$ 1,375.00
	(\$725.00/2007)(\$650/2006)	
MEETING EXPENSE	\$ 400.00	\$ 163.49
MEMBERSHIP	\$ 100.00	\$ 22.48
MEMORY BOX	\$ 500.00	\$ 611.68
MISCELLANEOUS	\$ 600.00	\$ 255.90
POSTAGE GENERAL	\$ 100.00	\$ 19.03
NEWSLETTER	\$ 500.00	\$ 242.76
PRINTING GENERAL	\$ 400.00	\$ 413.78
NEWSLETTER	\$ 900.00	\$ 318.62
PUBLICITY	\$ 100.00	\$ -
REFRESHMENTS	\$ 500.00	\$ 361.52
RETREAT	\$ 5,000.00	\$ 4,112.45
		(\$4.89/07)
SEMINARS	\$ 8,000.00	\$ 5,635.91
TELEPHONE	\$ 25.00	\$ -
WORKSHOP FEES	\$ 500.00	\$ 627.93
TOTAL EXPENSES PAID		\$ 17,592.45

**GATEWAY DECORATIVE ARTISTS
TREASURER'S REPORT
For Period Ending 03/09/2007**

BANK BALANCE AS OF	<u>1/1/2007</u>	\$ 2,412.29
<u>INCOME</u>		
CHAPTER TABLE	\$ 77.91	
CHISTMAS PARTY (for 2006)	\$ 60.00	
DIRECTORY ADS	\$ -	
GIFTS & DONATIONS		
Memory Box	\$ 50.00	
Turning Point	\$ -	
Other	\$ 5.00	
INTEREST INCOME	\$ 1.94	
MEMBERSHIP DUES	\$ 1,240.00	
MISCELLANEOUS	\$ 1.80	
NEWSLETTER ADS	\$ 3.00	
RETREAT	\$ -	
SEMINARS		
Janelle Johnson	\$ 295.00	
Linda Coulter	\$ 320.00	
Lynne Deptula	\$ 350.00	
Sue Scheewe weekend	\$ 359.00	
WORKSHOPS	\$ -	
INCOME	<u>\$ 2,763.65</u>	<u>\$ 2,763.65</u>
TOTAL INCOME		\$ 5,175.94
	LESS EXPENSES PAID	<u>\$ 802.83</u>
	BANK BALANCE AS OF 03/09/07	\$ 4,373.11
	CERTIFICATE OF DEPOSIT	\$ 5,515.73
	CERTIFICATE OF DEPOSIT	<u>\$ 9,179.75</u>
	TOTAL FUNDS	\$ 19,068.59

EXPENSES (YEAR 2007)	BUDGETED AMOUNT	YEAR TO DATE ACTUAL
ADMINISTRATIVE EXPENSES	\$ 600.00	\$ 180.10
BANK CHARGES	\$ 80.00	\$ 62.00
BOARD EXPENSES	\$ 100.00	\$ 33.81
CHARITY	\$ 50.00	\$ -
CHRISTMAS PARTY EXPENSE	\$ 1,500.00	\$ -
GDA GIFTS AND DONATIONS	\$ 600.00	\$ 105.00
HISTORIAN	\$ 100.00	\$ -
MEETING EXPENSES	\$ 300.00	\$ -
MEETING ROOM RENTAL	\$ 800.00	\$ -
MEMBERSHIP	\$ 100.00	\$ 20.00 {2006}
MEMORY BOX PROGRAM	\$ 500.00	\$ 40.53
MISCELLANEOUS	\$ 100.00	\$ -
POSTAGE: GENERAL	\$ 200.00	\$ 7.80
NEWSLETTER	\$ 300.00	\$ 47.52
PRINTING GENERAL	\$ 150.00	\$ 80.46
NEWSLETTER	\$ 500.00	\$ 32.32
PUBLICITY	\$ 100.00	\$ -
REFRESHMENTS	\$ 500.00	\$ 116.10
RETREAT EXPENSES	\$ 5,000.00	\$ 4.89 {2006}
SEMINARS EXPENSES	\$ 8,000.00	\$ -
Coulter		\$ -
Deptula		\$ 15.64
J. Johnson		\$ -
Scheewe Weekend		\$ 56.66
SHARING WORKSHOP FEES	\$ -	\$ -
TELEPHONE	<u>\$ 25.00</u>	<u>\$ -</u>
TOTAL BUDGETED AMOUNTS	\$ 19,605.00	
TOTAL EXPENSES PAID		\$ 802.83

DONNA WESSEL, TREASURER



Gateway Decorative Artists

Newsletter Editor:
JOSEE LAFERRIERE
2222 Blue Lake Dr.
Wentzville, Mo 63385
Newsletter@gatewaydecorativeartists.com

FIRST CLASS POSTAGE

TO :



The Gateway Gazette is published five times a year by Gateway Decorative Artists. Greater St. Louis chapter, a not for profit organization formed in 1974 to stimulate interest in and appreciation for the Art of Tole and Decorative Painting



Checklist For April Meeting

- Bring your basic painting supplies and wine bottle.
- Bring your projects to Show and Tell.
- Bring wish items for Turning Point.
- Memory boxes – painted and ready to ship.
- Bring Money

- At the table:**
 - o Sign up to be a volunteer for committee work.
 - o Buy painting supplies
 - o Bid on Pieces for the Auction
 - o Vote for retreat projects
 - o Final Payment for Scheewe's weekend.
 - o Sign up for Janelle Johnson's Seminar.
 - o Sign up for Linda Coulter's seminar.

Great advertising opportunities

Ad	Size	Members issue year	Non-Members issue year
Full Page	8 1/4 X 10 3/4	\$ 10.50 \$ 50.00	\$ 13.25 \$ 62.50
Half Page	8 1/4 X 5 1/4	\$ 8.00 \$ 37.00	\$ 10.00 \$ 46.25
Quarter Page	4 X 5 1/4	\$ 5.50 \$ 25.00	\$ 6.50 \$ 31.25
Business card format	4 X 2 1/2	\$ 3.00 \$ 12.50	\$ 3.75 \$ 15.50

Personal messages are \$.05/word

All ads must be paid for in advance of publication.

Ads should be camera ready, which means typed, artwork completed and ready to print. Gateway Gazette is good advertising for those wishing to advertise their business, shop, classes, wood, painting supplies or other services.

For more information call Josee Laferriere 636-327-9060 or email her at newsletter@gatewaydecorativeartists.com

