



Gateway Gazette

www.gatewaydecorativeartists.com

Volume 34 Issue 3

St. Louis, Missouri

June/July/August 2007

What's Inside

Calendar	2
President message	3
Retreat	4
Charity	5
Form officers request	6
Seminars	7
Members News	8
Secretary's Report	9
Treasurer's report	11
Checklist	12

Chapter Meeting

June 10, 2007

Sunday: 1:00 P.M.

At Maryland Heights
Center.

Paint-In
Summer De-Lite
Wine Glass Candle/Lamp
oil rouging technique on watercolor
paper lamp shade
Taught by Cindy Rupp



Refreshments
For June Meeting
Jeanne Abraham
Debbie Christenson
Laura Heathcote
Maureen Wasserman
Maura Gallen

WHAT TO BRING:

- paper towels
- wine glass (8-10 ounce wine glass works best)
- brushes: small flat sable or small flat bristle brush(s) for oil paints.
- \$3.00 which will cover: instructions, pattern, photos, (surface) inked watercolor paper shade, oil paints and gel, and paper plate palette.

If you don't have a wine glass, Cindy will bring some to sell for \$1 each.

She will also bring brush cleaner since we will be using oil paints.

This year we are reserving tables for the paint-in's. You may set your painting supplies in a spot at one of those tables and be seated at another.



Chapter of
National Society of
Decorative Painters

www.decorativepainters.org

Second Memory Box Paint-In
Changed for the Second
TUESDAY JUNE 12, 2007
9:00 a.m. to 4:00 p.m.
At Lindell Bank and Trust
5500 Mexico Road
St-Peters, Mo

Janelle Johnson

Seminar

June 23-24, 2007

**BOARD OF DIRECTORS
2007**

President

Gloria Falk 636-561-6623
president@gatewaydecorativeartists.com

Vice-President

Judy Dodson 636-936-0384
vicepresident@gatewaydecorativeartists.com

Program Chairman

Marilyn Hartnett 636-332-0839
program@gatewaydecorativeartists.com

**Membership Secretary and
Publicity**

Lorie Reece 314-971-0190
membership@gatewaydecorativeartists.com

Recording Secretary

Kay Vuichard 636-441-9438
Twofrogs63@yahoo.com
secretary@gatewaydecorativeartists.com

Treasurer

Donna Wessel 314-428-8226
treasurer@gatewaydecorativeartists.com

Newsletter Editor

Josée Laferrière 636-327-9060
newsletter@gatewaydecorativeartists.com

Parliamentarian

Carolyn Dawson

Area Representatives

South County

Joan Love 314-842-7288

Illinois

Lida Gillham 618-656-9294

North County

Julia Lamborn 314-731-3561

West County

Maureen Wasserman 636-227-2843

If you have anything you would like to pass on to the Chapter, such as illnesses, congratulations etc. you may call one of these people or your membership chairman,
Lorie Reece

MARK YOUR CALENDAR



2007 Scheduled Events

June 10	Chapter Meeting	Maryland Heights Center
June 23,24	Janelle Johnson Colored Pencil Seminar	Wingate Inn 13615 Riverport Dr., Maryland Heights.
August 4	Board Meeting	Gloria's Home
August 25-26	Linda Coulter Grisaille seminar	Wingate Inn 13615 Riverport Dr., Maryland Heights.
September 9	Chapter Meeting Retreat Auction	Maryland Heights Center
October 12-14	Retreat	Holiday Inn Butler Hill Rd.
October	Board Meeting	Gloria's Home
November 11	Chapter Meeting Paint-in: Christmas Ornament Taught by Judy Dodson	Maryland Heights Center
December 2	Christmas Party	Andre's 4154 Telegraph Road, St. Louis, MO 63129

Upcoming Events

April 25,26,27, 2008	Cheri Rol, Acrylic	To be announced
July 25-27, 2008	Mary Gibilisco, Genesis Seminar	To be announced

Location

All chapter meetings will be held at the Maryland Heights Center unless noted otherwise.

From 270:
Dorsett Road West
Right on McKelvey Rd.
Right on Ameling
Left on McKelvey
2344 McKelvey
314-434-1919



Message From Your President

STANDING COMMITTEE CHAIRS 2007

Nominating Committee
Cheryll Wilburn

Refreshments
Jean Ellison

Gold Brush Award

Librarian
Barb Ogden

Historian
Gloria Falk

SPECIAL COMMITTEE CHAIRS 2007

Hospitality
Lorie Reece
Jeanette Bishop
Lee Zimmer

Webmaster
Josée Laferrière

Memory Boxes and
Charity
Judy Dodson
Cheryll Wilburn

Christmas Party
Marilyn Hartnett

Dear Painting Friends,

I am writing this as I prepare to go to our Society's biggest event of the year...The National Conference of Decorative Painters in Anaheim, CA. It certainly is promising to be an exciting time. Marilyn & Lorie are attending the Chapters Gathering and will report on that at our June Meeting.

I just received news from Loew-Cornell that I won one of their 1" 7550C-Wash brush for taking part in an email networking question. Yippee!! I would like to share with you, their question and my answer:

QUESTION: What concrete things do you do in the classroom to help your students break from the pack? What could you do to encourage creative growth?

MY ANSWER: What I usually tell my students is: Don't mind that it doesn't look like mine - make it *YOURS*. The best lesson for you is to go home and do another picture and change on it what you don't like about the one you just did in class. This will give you *experience* and you may find that the one at home is easier to do, because you won't have to be keeping up with the teacher and others in the class. I always give my students written instructions and sometimes a color photo to go by.

We had great fun at the Scheewe Seminar the end of April. Trisha Tyler was a wonderful teacher and covered lots of techniques and uses for their products.

We had our first Memory Box paint-in at Lindell Bank in St. Peters. We managed to get 33 boxes done that day. What a nice facility for us to use. Thank you *Mary Jo* for getting the room for us to hold this paint-in at NO COST to the chapter. Make note we are changing the date for the next paint-in to the **second** Tuesday of June. Judy Dodson will teach us that day. Anyone else want to volunteer to teach or paint? Talk to Judy at the meeting.

Judy Dodson has been hard at work getting things in line for our fall retreat. What a wonderful selection of projects we will have to choose from this year. You will be able to view the chosen projects at the June Meeting. You won't want to miss this meeting, ladies, and get your registrations in quickly.

We certainly have had and will have lots of opportunity to enjoy our painting. Chapters are the essential element in spreading the word of our great art form. They give us the opportunity to develop friendships and link us together in our common interests. They also give us a chance to share our ideas, and light the path to our artistic education through seminars, sharing workshops, demonstrations and our retreat. Bring a guest to the next meeting and encourage them to join our club, so they too can enjoy these wonderful learning experiences.

I will be looking forward to seeing you at the June meeting.

Gloria Falk, TDA
President



**Deadline for your
articles
for the next issue:
August, 19 2007**

“PALETTE OF SEASONS”

ANNUAL FALL RETREAT

October 12,13 & 14, 2007

At Holiday Inn South-Butler Hill

4234 Butler Hill Road

St. Louis, Mo. 63129

(314) 894-0700

Reservation Request-Gateway Decorative Artists



It’s almost that time again for our annual “**RETREAT**”. Four short months from now and a group of excited, giggling, talented, women will arrive at the Holiday Inn for a weekend of FUN, FRIENDSHIP, PAINTING, and other surprises.

The projects have been chosen, the teacher’s notified, and the hotel room block is open for registration.



Make sure you pack an extra bag for 4 new projects and at least 2 make n take’s to bring home. We will arrive in the Spring, the season of new beginnings, sizzle through the Summer, dress in your most colorful seasonal costume for the Fall supper, and depart with the shimmer of glistening snowflakes in the Winter.



I would like to again have a “Secret Pal” program just for the weekend.

Everyone seemed to really enjoy this last year, and I would like to repeat all the fun. Please fill out the form in this newsletter, and turn it in to me at the meeting, or by August 1st. Be sure to bring or mail a self-addressed stamped envelope (SASE) for the return of your Secret Pal name/form and registration verification form. I will do all the matching up of names, and give you your “pals” name as soon as possible. These bags could contain something you painted, or special snack foods, teas, coffees, hot chocolate, candy and painting supplies. We will exchange bags at our Friday night supper. Please put the “pals” name on the outside of the bag, and your name on the inside. You can even turn this into a game with various clues in the bag.

Members can make their reservations with the hotel at any time. Retreat booklets will be given out at the June meeting. If you did not attend the April meeting, and want a colored booklet, it is not too late. Please call me to order one. (636) 936-0384. Register for Retreat and sign up for classes right away to be assured you get what you wish to take. We are again inviting non-members to Retreat this year, and it is in the St. Louis area, so classes will fill quickly. For any questions or concerns please call Judy Dodson at (636) 936-0384.

Retreat Teachers: Please bring your projects by noon at the meeting

Name: _____ Favorite color: _____

Favorite style of painting: _____ What do you like to paint? _____

Favorite snack food: _____

Please circle choice

Coffee Tea Hot Chocolate

Candy sugar free candy

Dietary restrictions _____

Retreat Trade Show Is Back!

We have had absolutely wonderful trade shows in the past and are planning on doing one again this year. This will be a short period of time through Saturday afternoon and lunch. The vendors were very successful even during this short period of time. As a participant you will be required to donate an item with a retail value of \$25 and a refundable deposit of \$100. If you are interested please contact **Ellen Rohne at 636-240-1684 or E-Mail me at Rohneje@aol.com.**

MEMORY BOX

NEWS FROM JUDY DODSON



Thanks to the following members who returned 36 Memory Boxes at the April meeting: Dottie Baumgartner, Ginger German,

Jackie Kohler, Joan Love, Joyce Miller, Ann Mohman, Ingrid Oertli, Jean Rogenhofer, and Donna Wessel. Thanks so much ladies. In addition to these boxes we have received another 137 from Judy Dodson, Gloria Falk, Mary Jo Kumer, Janie Parsie, a former member, Kay Vuichard, Donna Wessel and Cheryl Wilburn.



Present at our 1st Memory Box Paint- In, held at the Lindell Bank & Trust Company on May 1st were: Judy Dodson, Gloria Falk, Ginger German, Mary Jo Kumer, Kay Vuichard, and Donna Wessel, who painted another 34 boxes.

We also received an additional 122 boxes from Gloria Falk, Mary Jo Kumer, Janie Parsie, and Donna Wessel. We have now shipped a year-to-date total of 413 boxes to needy hospitals and infant care centers. When you think in terms of for every one we send two more are needed, we still have a lot of work to do.



ATTENTION MEMBERS

The June Paint-In at the bank will be held on the 2nd Tuesday of June, instead of the 1st. This is being re-scheduled due to The National Convention. The

paint-in hours will be from 9:00 a.m. to 4:00 p.m. on June 12, at the Lindell Bank & Trust Company, 5500 Mexico Road, St. Peters, Mo. This is across from the St. Peters City Hall. The facility has a very nice kitchen with sinks and a refrigerator. Members are asked to bring their lunch and painting supplies. The chapter is providing the boxes and paint. You may come for a short period of time, or all day, as we will be base coating, and varnishing too. Judy Dodson will teach a fuzzy little duck for the second pattern. You will need a ¼ Rake brush.

REMEMBER: We always need money for shipping and buying more boxes, so if you are unable to paint a memory box, you can always make a cash/check donation.

TURNING POINT WISH LIST:

These items are desperately needed for the summer months.

- Sanitary items (pads & tampons)
- Toilet paper
- Laundry soap

IMPORTANT INFORMATION:

Please be sure to make checks out to TURNING POINT if you plan on receiving a Missouri Domestic Violence Shelter Tax Credit, or plan to use as a tax deduction for donations.

GATEWAY DECORATIVE ARTIST Official Request for 2008 Officers

All nominees must have been a member for not less that 2 years immediately preceding the time of election and have attended 5 meetings.

Please place a mark to indicate:

[] Not eligible, [] Not interested at this time, [] Interested, I would like to be called.

Signature _____

Print _____

Interested members please provide best contact times and phone numbers.

Day _____ Time _____ Phone Number _____

Day _____ Time _____ Phone Number _____

All offices will be voted on in November.

The President, Program Chair, Newsletter Editor will be a 2 year term.

The Vice-President, Membership Secretary, Recording Secretary, and Treasurer will be a one year term.

**Please send or give this completed form to: Cheryl Wilburn, Nominating Committee Chair,
23474 Wild Horse Farm Rd, Warrenton, Mo 63383**



**This form is in lieu of having to
make calls to members.
Please consider this form as
your invitation to run for office.**

Cheryl Wilburn

ATTENTION

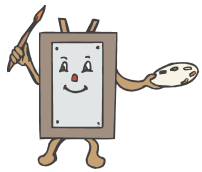
PLAID has a new paint out – High Definition visual texture paints. They are wanting to familiarize people with it and they are having a contest. You can tell Gloria you're interested in taking part by June 10 and she will enter your name for supplies. Plaid is furnishing paints and a canvas for your creation. The piece needs to be sent to Plaid (at your expense) by Oct. 1. The projects will become the property of Plaid. Winners will be announced by Oct. 15. There will be: One \$500 cash prize & five \$100 cash prizes.



SDP Online Class

SDP will offer throughout the year a series of Online Classes. The classes are available to members (at \$20 for a 1-hour, 45 minute video.) You may view it online as many times as you wish during 30 days. You can stop, rewind, listening as you want to finish your project. You must have high-speed internet to participate. Go to www.decorativepainters.org/onlineclasses/ for more information.

Marilyn Hartnett tried the Goldfinch taught by Janelle Johnson and she really enjoyed it. She said: "it is like having the teacher with you at your house".



SEMINARS PROGRAMS PAINT IN ...

June 23-24, 2007 - Janelle Johnson

The paper has been ordered for the colored pencil seminar. **PENCIL COLORS FOR THE FINCH PROJECT IN JUNE WITH JANELLE JOHNSON ARE:** Black, Black Cherry, Burnt Ochre, Carmine Red, Cream, Crimson Lake, Dark Green Dark Umber, French Grey 10, 20, and 90%; Green Ochre, Indigo Blue, Jasmine, Kelp Green, Marine Green, Raspberry, Salmon Pink Scarlet Lake, Sunburst Yellow, Tuscan Red, and White. If you need any of them they can be ordered from the website www.janellejohnson.com or buy them from Janelle at the seminar.



August 25-26, 2007 - Linda Coulter



The Linda Coulter seminar is August 25 and 26, and the project photo will be on display at the June meeting. The Cost of Coulter seminar is \$160 for two days, and included surfaces and paint. All reservations require a non-refundable deposit of \$50, and the balance must be paid by August 1. If you need to cancel no refunds will be made. If you have paid in full and cannot make the seminar, you are entitled to all instructional materials and paints from the seminar, or you could find a replacement and sell your spot.

You are getting a lot more than a painting with this seminar. The project involves a bit more structure, so takes just a bit longer. The project includes a color lesson ... color theory and how to choose a color scheme that supports an emotional statement that you want to portray in the finished art work. It takes about an hour to explain all that.

The first day we will work entirely in grisaille... acrylic gray tones. That afternoon Linda plans to teach the color theory part which will allow us to think on our color schemes over night. We will again briefly recap the color scheme lesson and briefly discuss their ideas and answer questions.

Then, we will commence color application in the next morning and apply the finishing color details that afternoon.

Linda Coulter has taught this project many times in the past with this procedure and it has always been very successful with all participants well pleased.

Seminar: _____ Date: _____

Student Name: _____ Phone: _____

Address: _____ Email: _____

City/State/zip: _____ Amount included: _____ # check _____

(Please make check payable to: Gateway Decorative Artists)
Mail or give registration form with payment to: Marilyn Hartnett, 3116 Bear View Court, Wentzville, Mo 63385

If you have any questions, please feel free to call Marilyn Hartnett (636) 332-0839 or email at program@gatewaydecorativesartists.com



JUNE

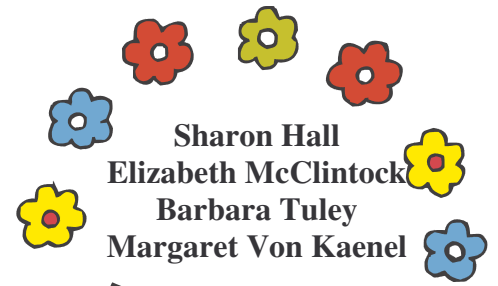
Judy West 1
 Marilyn McDonald 10
 Delia Larkins 14
 Elizabeth Colvin 15
 Ingrid Oertli 22
 Jean Rogenhofer 26

JULY

Catheryn Somraty 13
 Jean Ellison 17
 Dixie Reeb 20
 Cindy Rupp 21

AUGUST

Ann Mohrman 01
 Jeanne Abraham 02
 Elizabeth McClintock 06
 Tracy Kocher 08
 Carol Rufkahr 08
 Jame Lair R 13
 Jacqueline Kohler 24



Other seminars around us

Central Illinois Decorative Artists-
 Decatur, IL
 Trudy Beard - September 14-15 2007
 Contact: Mary Jane Zook (309-473-2034) or mzook@aol.com

Additional members in the directory		
Hall, Sharon 513-562-7685	1518 Main Street	Leadwood, MO 63653 Birthday: 6-May
McClintock, Elizabeth 573-624-4107	15597 County Road brucebeth@newwavecomm.net	Dexter, MO 63841 Birthday: 6-Aug
Tuley, Barbara 636-282-7218	3008 Shelley Lynn Drive parafighterwife@sbcglobal.net	Arnold, MO 63010 Birthday:
Von Kaenel, Margaret 314-726-6392	6655 Waterman Avenue Krushm@sbcglobal.net	St. Louis, MO 63130 Birthday:



Our sympathies go to the family of former long time member Beth McCracken who passed away on Monday May 14 from cancer.

SEND A CARD TO A SOLDIER

In the March issue of the Chapter's Happenings one of the chapters has started sending cards to members of our armed forces that have been wounded. They thought this would be a way to let our service members know that we appreciate their sacrifices. If you would like to send a card the address is:



"A Recovering American Soldier"
 c/o Walter Reed Army Medical Center
 6900 Georgia Ave. NW
 Washington, DC 20307-5001

The Christmas Party
 will be at Andre's,
 4154 Telegraph Road,
 St. Louis, MO 63129,
 from 11:30 a.m. to 3 p.m.
 The cost is \$22.
 We will begin taking reservations
 at the September meeting.
 Deadline for reservations will be
 November 15.

GATEWAY DECORATIVE ARTISTS CHAPTER MEETING MINUTES April 15, 2007

Board Members Present: Gloria Falk, Marilyn Hartnett, Judy Dodson, Donna Wessel, Kay Vuichard, Lorie Reece. Absent was Josée LaFerriere.

Meeting called to order at 1:15pm.

The invocation was given by Norma Jackson, who read a poem. The February Minutes were approved as were the revised 2006 year-end Treasurer's report and the March 9th Treasurer's report. Gloria reminded everyone to vote for SDP board members. Corkie Dunlap, who taught our first Genesis class, is running for board member-at-large. Gloria stated that she had DAC renewal forms at the head table for anyone interested. A former member (Sharon Regula) donated wood surfaces and books to the chapter. Gloria phoned Andy Jones of the DAC about some of the older books to see if he would want them for the collection. Gloria sent 32 lbs of books to the DAC. The donated wood surfaces were displayed on the tables against the wall. Items will be sold to the highest bidder in the Silent Auction. The bidding will close at 2:30pm. The donated books were offered for sale at \$1.00 each. The proceeds from the auction and book sale will be split between the Memory Box Program and Retreat. Gloria handed out service awards to members who served the chapter in 2006.

Judy Dodson had the Retreat projects on display and the members who plan to attend voted for their favorite 10 projects. The results will be announced at the June meeting and the chosen items will again be on display.



Orders were taken for color Retreat booklets. Those who did not order a color booklet will get a black and white version. Judy Dodson has booked the Holiday Inn at Butler Hill Rd for the retreat on October 12-14. There were two chairs on display painted by Mary Jo Kumer and Gloria Falk that will be raffled off at the September meeting. Mary Jo Kumer has arranged, at no cost, a room at Lindell Bank in St. Peters, Mo. the first Tuesday of every month from 9:00am to 4:00pm starting in May for Memory Box Paint-ins. Gloria will teach the first class with the subject being "Angel Bear". Bring your usual painting supplies. Paints from the Lynne Deptula seminar will be used for the paint-ins. Judy asked for volunteers to teach other memory box paint-ins and for the various committees to help at retreat.

Cheryll Wilburn reported on our charity activities reminding us that Turning Point is having their annual Dance and Silent Auction in Warrenton with Butch Wax and the Hollywoods and are accepting donations for the auction. Anyone interested in donating should contact Cheryll. Dixie Reeb suggested that instead of getting an assortment of items each month for Turning Point that we all get one item, (i.e., dishwashing liquid or laundry soap) and in one collection give them enough for the entire year. Ingrid Oertli also commented that this could be done at virtually no cost to us since the local grocery stores offer a \$10.00 off coupon with \$50.00 purchase at regular intervals.

Marilyn Hartnett reported that there was still space available for the Susan Scheewe Weekend, Janelle Johnson and Linda Coulter seminars. The choices for the Linda Coulter Seminar were on display and those planning to attend voted for their choice of project. The Lincoln Trails Chapter in Illinois is also having a Linda Coulter Seminar and anyone interested can contact that chapter. Marilyn has contacted several banquet halls and found that Andre's in South County had the best price and facilities for our Christmas Party and by a show of hands the members present approved the choice. The South County girls gave a round of applause. The Christmas party will be held December 2 and the cost will be approximately \$22.00 each.

Gloria introduced Kay Baranowski, a former chapter member, as the maker of our mascot, "Gateway Louie". Jo Lair, who had surgery several weeks ago, is still not feeling very well. Lorie Reece gave the attendance report. There were 47 members present and 7 guests, two of whom became members today. Gloria painted two tee shirts for door prizes and the winners were Jean Ellison and Lida Gillham. The centerpiece bowls and candles were given to the person seated in front of the flower. The 2007 membership cards were available at the sign-in desk.



Our Librarian, Barb Ogden, and Josée have been reorganizing the Library. The pattern packets will be stored in binders with one binder dedicated to packets from the Convention held in St. Louis. These binders will be brought to each meeting. The library's collection of books and videos will be available by request. Barb will bring requested items to the next meeting. Barb brought books and pattern packets that were removed from the library inventory and were available to anyone who wanted them.

Jean Ellison thanked the refreshment committee for the refreshments. Jean also asked that one person at each table clear the table and fold the tablecloth. This will make clean up much faster.

Jean Ellison made a motion that the Gold Brush Award be reinstated for this year. Carol Rufkahr seconded and the motion passed by a show of hands.

Marilyn Hartnett and Lorie Reece will be Gateway's representatives at the Chapter's Gathering at the National Convention in Anaheim, CA.

Donna Wessel had Gateway jewelry for sale at the sign-in desk. Tracy Kocher had the new Delta colors available for purchase along with other painting supplies. Ellen Rohne taught "Grapes on a Green Wine Bottle" for the meeting paint-in.

A motion to adjourn was made by Mary Jo Kumer and seconded by Carol Rufkahr. The meeting adjourned at 2:00pm

Respectfully submitted,

Kay Vuichard



A big thank you to all chapter members and guests who helped to make our Silent Auction a very successful activity at our April meeting. A total of 49 old books and 96 wood/tin pieces found a new home. The net income of \$592 was equally divided between Memory Box and Retreat. Hopefully, these new additions to your personal "stashes" will bring you many hours of painting pleasure.

**GATEWAY DECORATIVE ARTISTS
TREASURER'S REPORT
For Period Ending 05/08/2007**

BANK BALANCE AS OF	<u>1/1/2007</u>		\$	2,412.29
<u>INCOME</u>				
CHAPTER TABLE		\$	84.91	
CHISTMAS PARTY	(for 2006)	\$	60.00	
DIRECTORY ADS		\$	-	
GIFTS & DONATIONS				
Memory Box		\$	696.00	
Turning Point		\$	-	
Other		\$	5.00	
INTEREST INCOME		\$	1.94	
MEMBERSHIP DUES		\$	1,340.00	
MISCELLANEOUS		\$	1.80	
NEWSLETTER ADS		\$	11.00	
RETREAT		\$	469.00	
SEMINARS				
Janelle Johnson		\$	1,259.00	
Linda Coulter		\$	1,120.00	
Lynne Deptula		\$	535.00	
Sue Scheewe weekend		\$	1,226.20	
WORKSHOPS		\$	-	
INCOME		\$	<u>6,810.45</u>	<u>6,810.45</u>
TOTAL INCOME				\$ 9,222.74
	LESS EXPENSES PAID		\$	<u>4,840.15</u>
	BANK BALANCE AS OF 05/08/07	\$	4,382.59	
	CERTIFICATE OF DEPOSIT	\$	5,515.73	
	CERTIFICATE OF DEPOSIT	\$	<u>9,179.75</u>	
	TOTAL FUNDS			\$ 19,078.07
<u>EXPENSES (YEAR 2007)</u>				
ADMINISTRATIVE EXPENSES		\$	600.00	\$ 280.10
BANK CHARGES		\$	80.00	\$ 77.00
BOARD EXPENSES		\$	100.00	\$ 44.61
CHARITY		\$	50.00	\$ -
CHRISTMAS PARTY EXPENSE		\$	1,500.00	\$ 100.00
GDA GIFTS AND DONATIONS		\$	600.00	\$ 118.65
HISTORIAN		\$	100.00	\$ 34.04
MEETING EXPENSES		\$	300.00	\$ 100.00
MEETING ROOM RENTAL		\$	800.00	\$ -
MEMBERSHIP		\$	100.00	\$ 85.00
MEMORY BOX PROGRAM		\$	500.00	\$ 260.28
MISCELLANEOUS		\$	100.00	\$ -
POSTAGE: GENERAL		\$	200.00	\$ 15.60
NEWSLETTER		\$	300.00	\$ 85.32
PRINTING GENERAL		\$	150.00	\$ 85.82
NEWSLETTER		\$	500.00	\$ 53.96
PUBLICITY		\$	100.00	\$ -
REFRESHMENTS		\$	500.00	\$ 121.34
RETREAT EXPENSES		\$	5,000.00	\$ 33.86
SEMINARS EXPENSES		\$	8,000.00	\$ -
Coulter				\$ -
Deptula				\$ 1,808.44
J. Johnson				\$ -
Scheewe Weekend				\$ 1,536.13
SHARING WORKSHOP FEES		\$	-	\$ -
TELEPHONE		\$	<u>25.00</u>	<u>\$ -</u>
TOTAL BUDGETED AMOUNTS		\$	19,605.00	
	TOTAL EXPENSES PAID			\$ 4,840.15

DONNA WESSEL, TREASURER



Gateway Decorative Artists

Newsletter Editor:

JOSEE LAFERRIERE

2222 Blue Lake Dr.

Wentzville, Mo 63385

Newsletter@gatewaydecorativeartists.com

FIRST CLASS POSTAGE

TO :



The Gateway Gazette is published five times a year by Gateway Decorative Artists. Greater St. Louis chapter, a not for profit organization formed in 1974 to stimulate interest in and appreciation for the Art of Decorative Painting.



Checklist For June Meeting

- Bring supplies needed for the paint-in.
- Bring your projects to Show and Tell.
- Bring wish items for Turning Point.
- Memory boxes – painted and ready to ship.

- At the table:**
 - Sign up to be a volunteer for retreat, Christmas Party.
 - Sign up for Retreat
 - Final Payment for Janelle Johnson’s Seminar.
 - Sign up for Linda Coulter’s seminar.

Great advertising opportunities			
Ad	Size	Members issue year	Non-Members issue year
Full Page	8 1/4 X 10 3/4	\$ 10.50 \$ 50.00	\$ 13.25 \$ 62.50
Half Page	8 1/4 X 5 1/4	\$ 8.00 \$ 37.00	\$ 10.00 \$ 46.25
Quarter Page	4 X 5 1/4	\$ 5.50 \$ 25.00	\$ 6.50 \$ 31.25
Business card format	4 X 2 1/2	\$ 3.00 \$ 12.50	\$ 3.75 \$ 15.50
Personal messages are \$.05/word			
All ads must be paid for in advance of publication.			
Ads should be camera ready, which means typed, artwork completed and ready to print. Gateway Gazette is good advertising for those wishing to advertise their business, shop, classes, wood, painting supplies or other services.			
For more information call Josee Laferriere 636-327-9060 or email her at newsletter@gatewaydecorativeartists.com			