



Gateway Gazette

www.gatewaydecorativeartists.com

Volume 34 Issue 5

St. Louis, Missouri

November/December 2007

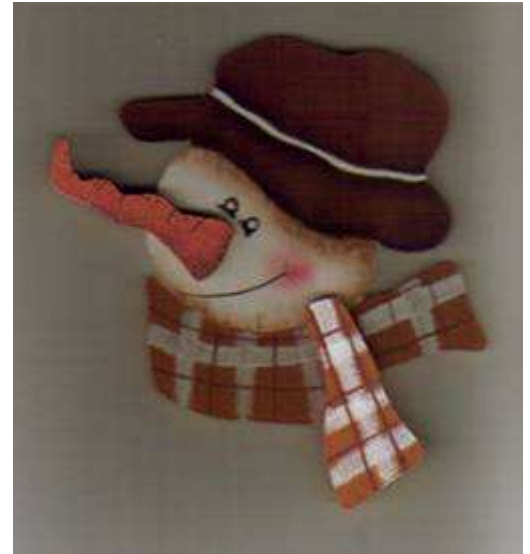
What's Inside

Calendar	2
President's message	3
Retreat	4
Charity	5
Programs	7
Member News	9
Thank you	10
Bylaws proposed	11
Secretary's Report	12
Gold Brush Award	14
Election	15
Membership Forms	17
Checklist	18

8

CHAPTER MEETING

Sunday
November 11, 2007
At Maryland Heights
Center
Doors Open: 12:00 p.m.
Meeting: 1:00 p.m.



Refreshments
For November Meeting
"The Galvanettes"
Vada Galvan
Jeanette Bishop
Judy Mayo
Cindy Rupp



Chapter of
National Society of
Decorative Painters

www.decorativepainters.org

Program

Our annual
election of officers
will be held



This cute snowman Ornament

Taught by Judy Dodson
Cost: \$3.00 for the Kits
Bring your usual paint supplies.

If you missed the paint-in in
November 2006, Judy will also
have kits from last year available
for \$3.00.

President

Gloria Falk 636-561-6623
president@gatewaydecorativeartists.com

Vice-President

Judy Dodson 636-936-0384
vicepresident@gatewaydecorativeartists.com

Program Chairman

Marilyn Hartnett 636-332-0839
program@gatewaydecorativeartists.com

**Membership Secretary and
Publicity**

Lorie Reece 314-971-0190
membership@gatewaydecorativeartists.com

Recording Secretary

Kay Vuichard 636-441-9438
Twofrogs63@yahoo.com
secretary@gatewaydecorativeartists.com

Treasurer

Donna Wessel 314-428-8226
treasurer@gatewaydecorativeartists.com

Newsletter Editor

Josée Laferrière 636-327-9060
newsletter@gatewaydecorativeartists.com

Parliamentarian

Carolyn Dawson

Area Representatives

South County

Joan Love 314-842-7288

Illinois

Lida Gillham 618-656-9294

North County

Julia Lamborn 314-731-3561

West County

Maureen Wasserman 636-227-2843

If you have anything you would like to pass on to the Chapter, such as illnesses, congratulations etc. you may call one of these people or your membership chairman, Lorie Reece

MARK YOUR CALENDAR



2007 Scheduled Events

- November 6 Memory Box Paint-In
is Cancelled
- November 11 Chapter Meeting
Paint-in: Christmas Ornament Maryland Heights Center
Taught by Judy Dodson
- December 2 Christmas Party
Andre's 4154 Telegraph Road, St. Louis, MO 63129
- December 4 Memory Box Paint-In
By Ginger Lee German Lindell Bank & Trust Co.
5500 Mexico Road, St. Peters

Upcoming Events

- February, 3, 2008 Chapter Meeting Maryland Heights Center
- March 29, 2008 Karen Steiner workshop To be announced
Saturday
- April 13, 2008 Chapter Meeting Maryland Heights Center
- April 25,26,27, 2008 Cheri Rol, Acrylic To be announced
- June 8, 2008 Chapter Meeting Maryland Heights Center
- July 25-27, 2008 Mary Gibilisco, Genesis Seminar To be announced
- September Ellen Rohne Workshop To be announced
- September 14, 2008 Chapter Meeting Maryland Heights Center
- November 9, 2008 Chapter Meeting Maryland Heights Center

Location

All chapter meetings will be held at the Maryland Heights Center unless noted otherwise.

From 270:
Dorsett Road West
Right on McKelvey Rd.
Right on Ameling
Left on McKelvey
2344 McKelvey
314-434-1919



Message From Your President

STANDING COMMITTEE CHAIRS 2007

Nominating Committee

Cheryll Wilburn

Refreshments

Jean Ellison

Gold Brush Award

Barb Ogden

Librarian

Barb Ogden

Historian

Gloria Falk

SPECIAL COMMITTEE CHAIRS 2007

Hospitality

Lorie Reece
Jeanette Bishop
Lee Zimmer

Webmaster

Josée Laferrière

Memory Boxes and Charity

Judy Dodson
Cheryll Wilburn

Christmas Party

Marilyn Hartnett

Dear Painting Friends,

First of all, I want to say Thank you to Judy Dodson and all of her committees for their hard work on the Retreat last weekend. What a wonderful time we all had - Costumes, Trivia night, Secret Pals and all.

To those of you who have taken time to write us – it is good to know that you appreciate the work of everyone involved (including the staff at the hotel). I think everyone tried to guarantee you all a good time.

I want to dispel any negative rumors that might be going around about SDP cutting back on our Decorative Painter. The same number of pages that we had in 6 issues will now be in 4, giving us a bigger magazine. We won't be getting any less for our money.

Words from Jillybean: The key to a more vigorous Society is increased membership. You will want to take part in our thrilling new membership building contest, Share the Magic. Please refer to page 8 of the Sept./Oct. Decorative Painter for more information.

On Oct. 14 a lightning storm hit Wichita, Kan., the city where SDP Headquarters is located. During the storm, a high-voltage bolt of lightning struck the SDP offices, damaging or destroying nearly every electronic device in the building. The phone system was affected, as was the network system, fax machines and most staff computers. The computers that are used to put together *The Decorative Painter* magazine were damaged by the storm. Because of this, Issue #6 will be delayed. Thank you, again, for your patience. No staff was injured in this storm.

To the officers and committees that served this year, I want to say “thank you” for your hard work and dedication to the chapter. We have worked together as a “team” with the good of the chapter always our priority. “Thanks” also to all of the members that have become involved, over the year, in so many ways. You are all appreciated so much. You are the spokes that keep the wheel of this chapter going. If you are unable to attend the Nov. meeting, be sure to send Cheryll Wilburn a self-addressed stamped envelope to get your absentee ballot.

I am thankful for the opportunity I've had to serve all of you. I plan on running for another term and I am humbly asking for your vote.

Chapters and their members are the essential element in the spreading of the word of our art form. They give us the opportunity to develop friendships and link us together in our common interests, sharing of ideas and light the path to our artistic education.

Hope to see you in November, and please, bring a friend with you.

Gloria Falk, President



**Deadline for your
articles
for the next Issue:
January. 20. 2008**



Retreat 2007 Report

“PALETTE OF SEASONS”

By Judy Dodson Vice President

Gateway's Retreat "Palette of Seasons" will be a pleasant memory when you read this.

A group of giggling, excited, talented women arrived at the Holiday Inn / Butler Hill for a weekend of fun, friendship, and started painting a fleece scarf make-it and take-it, taught by Karen Steiner. Marilyn McDonald then taught a faux finished maple leaf pin or magnet make-it and take-it. Thanks so much ladies they were great projects and everyone enjoyed them.

We started our three Friday evening classes at 4:45, broke for dinner, a Salad, Turkey Croissant, and drinks, then resumed classes at 7:00 to 10:00 pm. While we were having dinner we exchanged our secret pal gifts. The hotel served fresh hot cookies and milk at 8:00 pm.

Saturday morning's executive continental breakfast (7:00a.m.) was Donuts, bagels, cream cheese, banana bread, fresh fruit, coffee, juice, and milk. The convenience of having all our meals served in the hotel Terrace room was wonderful. The head chef went out of his way to accommodate all our dietary needs.



Saturday morning classes started at (8:00- 12:00 noon). Thanks to Ellen Rohne who volunteered to organize it, we had a Trade Show. Four vendors set up from (10:00a.m.-2:00p.m.) to sell, sell and sell. **Our thanks to: Barratt House, Bill Chiles, Ellen Rohne, and The Red Rooster, who not only participated, but also donated a selection of gift baskets, wood and other wonderful items.** We offered the attending participants opportunities of ownership, and raised a total of \$148.00. We returned to the Terrace room for lunch, Fried Chicken Salad and drinks at 12:30, and more shopping. Saturday afternoon classes started at (1:30-5:30).

The Saturday night banquet started at (7:00p.m.) with a **Butterfly** (Judy Dodson) giving the secret knock to open the doors to the dining room. She was followed by a couple "**Harry, the stick scarecrow**" and his date (Lorie Reece), a **Leprechaun** (Ann Mohrman), several ladies with yummy flowers on their hats, a very **Leafy Tree** (Debbie Finklang), a **Babe in swimsuit and cover up** (Cindy Rupp), a **Spring Flower** (Marilyn McDonald), **Carmen Miranda** (Gloria Falk), a real **Scarecrow** (Donna Wessel), a **Sunflower** (Lee Zimmer), and last but not least a very large furry white **Easter Bunny** (Karen Steiner). Participants came into a dimly lit room with candles glowing on the tables, lights on trees all around the room, and glowing pumpkins for favors. We all enjoyed the two entrée buffet, Sliced Roast Beef, Baked Lasagna, Salad, Chef's Vegetable Medley, Corn, Mashed Potatoes, Gravy, Dinner Rolls, Butter, drinks, and finished off with hot Apple Cobbler. When dinner was over, and everyone had gone back for seconds, it was time for the parade of costumes and the vote for the best costume.



The Winners of the Costume contest were:

First Place: Karen Steiner (Easter Bunny)



**Second Place: Lorie Reece
"Harry, the stick scarecrow" and his date**



Thanks to Ellen Rohne for donating the prizes for the costume contest.

The evening's Entertainment, organized by Vada Galvan, and Cindy Rupp was a Trivia Contest. Cindy started things off by introducing Louie Seiberlich and his brother Ray. Louie was our "Master of Ceremonies" and conducted the Trivia contest. He started by asking all the groups to pick a name. There were seven groups and the names were as follows: **Wood Snatchers, Hot Flashers, The Three Stooges, The No Nothings (short No Nots), Harry's Harem, Trivia Illiterates, and the Spring Buddies.** We played 5 rounds with 10 questions in each round. The questions ranged from True and False, Multiple Choice, and Fill in the Blank. **The Wood Snatchers** (Lovella Mauer, Barb Ogden, and Ellen Rohne), came in 1st place. They gave a prize for last place and it was won by **The Three Stooges.** The party broke up around (9:30), so the ladies could have more time for make-it and take-it's. Cindy Rupp taught her spoon buddies, and had a full class. Jeanette Bishop taught next her domino necklace. Then everyone went to the rooms for a good night's sleep, or more partying.

Sunday morning started early again with breakfast (same as Saturday's) at (7:00a.m.). Our last three classes of retreat started at (8:00a.m.-12:00 noon). We all met in the Terrace room for Lunch Grilled Chicken Caesar Salad, and good byes. Names were drawn for attendance prizes and the centerpieces. I did not plan it, however after all the hugs and well wishes, as we were leaving the Terrace room, all the FIRE alarms in the hotel went off, and we exited the building quickly. This turned out to be nothing serious, just a dryer caught fire, but talk about going out with a Bang!

I want to say a personal "Thank You" to everyone who attended this years retreat. Your support has meant a lot to me, and to this chapter.

Thanks to all the teachers for taking the time to work up and submit projects, including, Jeanette Bishop, and Marilyn Mc Donald.

To: Barb Ogden for the seasonal centerpieces, and all the matching favors.

To: Marilyn McDonald and Karen Steiner for all your work on the favors, and helping me with them.

To: Kay Vuichard for help painting the name tags.

To: Ellen Rohne for organizing the Trade Show, and your donations for the best costumes.

To: Gloria Falk for attendance prizes.

To: Gloria Falk and Mary Jo Kumer for painting the chair seats.

To: Josee Laferriere for all her help with the booklet, when my computer got fried by lighting.

To: Vada Galvan and Cindy Rupp for arranging the "Entertainment".

To: All those that participated in both the Silent and Live Auction, and the Opportunities of Ownership for chairs.

Charity Corner

MEMORY BOXES



NOVEMBER PAINT-IN
AT THE LINDELL BANK
CANCELLED

Ginger German will teach a Fawn in December. **Liz Geers** will teach a Jamie Mills Price bear pattern on January 8, 2008. Thanks to **Kay Vuichard** for teaching a dogwood in September. They finished 26 boxes. **Donna Wessel** taught a cute fuzzy bunny at the October paint-in, where we finished 29 boxes.



I would again like to say *“thanks”* to all the teachers who have given of their time this summer, to keep our Memory box program going strong.

The December paint-in will be held on December 4, at the Lindell Bank & Trust Company, 5500 Mexico Road, St. Peters, Mo. This is across from St. Peters City Hall. We start at 9:00 a.m. to 4:00 p.m., the first Tuesday of the month. The bank has a kitchen with sinks, refrigerator, and stove. Please bring your lunch and basic painting supplies. Come join us for a fun day of painting. January paint-in is at the same location.



REMEMBER:

We need all the boxes we can get, so return any you might have out, at the November meeting. We can always use money for shipping or to purchase more boxes, so if you are unable to paint a box, you can always make a cash/check donation.



TURNING POINT WISH LIST

**This is a list for Christmas:
Select only a few items not all**

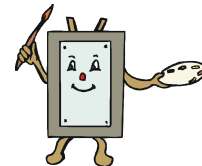
House slippers (Dollar General)
Make up kits
Perfume (not expensive)
Bath and Body kits
Hair accessories
Jewelry boxes
Alarm clocks
Umbrellas
Journals
Socks
Gloves
Hats
Watches (Dollar Store)
Small fleece throws
Decks of cards
Fuzzy poster art
Hand held games
Puzzles
Crossword puzzles
Wrapping paper, bows, and tape

Challenge 1000 boxes

We are very close to painting and donating 1000 boxes this year, and I would like to reach that goal. We have about one month to paint approximately 125 more boxes. MY Challenge to you, since November paint – in was cancelled, if everyone who is vested in the program could bring one painted box to the meeting, I would really appreciate it.

Thanks to all of you for a wonderful year.
Judy Dodson

MARILYN HARNETT "PROGRAM CHAIRMAN" PAINT-IN



At the **NOVEMBER MEETING PAINT-IN**, Judy Dodson will be teaching a Christmas ornament. The cost is \$3 per ornament. If you want extra ornaments please let Judy know that in advance of the meeting.

NEXT MEETING FEBRUARY 3, 2008 at Maryland Heights Community Center.

PAINT-IN: February Paint In: Karen Steiner has consented to do a repeat of her retreat make-it-and-take-it project, a beautiful scarf with a winter scene. People must sign up no later than January 10, because she must purchase the material for making the scarf. We will have it on display at the November meeting.

MARK YOUR CALENDARS FOR THESE FUTURE SEMINARS AND WORKSHOPS.

These workshops and seminars will be held at the Wingate Inn in Maryland Heights, from 9-5 each day of the project.

WORKSHOPS

KAREN STEINER will teach a workshop on Saturday, March 29, 2008. The cost of the seminar will be \$15 per person (check payable to Gateway Decorative Artists), plus surface costs (payable to Karen the day of the workshop). This project will be on display at the November meeting and your spot can be reserved by a \$15 deposit.



ELLEN ROHNE has agreed to teach a Saturday workshop in September. Information on this project will be available at the February meeting.



SEMINARS

CHERI ROL will be the next seminar teacher, April 25, 26, 27, 2008. The fee per day for this seminar is \$45. Deposits of \$40 will be required to hold a space for this seminar, and also entitles you to cast a vote for your favorite three projects. You will be able to vote on the projects at the November meeting.

MARY GIBILISCO is scheduled to teach July 25, 26, 27, 2008. The fee for this seminar per day is \$48. We will have a portfolio of possible subject matter available to view at the November meeting. Please indicate your favorite three choices on a signup sheet if you are interested in attending this seminar. No deposit will be required at this time.

If you have any questions, please feel free to call Marilyn Hartnett (636) 332-0839 or email at program@gatewaydecorativesartists.com

Programs Form

Seminars or workshops: _____ Date: _____

Student Name: _____ Phone: _____

Address: _____ Email: _____

City/State/zip: _____ Amount included: _____ # check _____

(Please make check payable to: Gateway Decorative Artists)

Mail or give registration form with payment to: Marilyn Hartnett, 3116 Bear View Court, Wentzville, Mo 63385



CHRISTMAS PARTY

At Andre's 4254 Telegraph Road, St. Louis 63129.

Cost: \$22 per person; guests welcome.

Bring a hand painted ornament for ornament exchange.

Program is to include installation of officers.

In lieu of favors at this event, we will donate \$150 to Turning Point.



GDA CHRISTMAS PARTY RESERVATION
 December 2, 2007
 11:30 a.m. to 3:00 p.m. Cost \$22.00

Name: _____ Phone: _____
 Guest Name: _____
 Check no: _____ Amount: _____

Please make check payable to: Gateway Decorative Artists

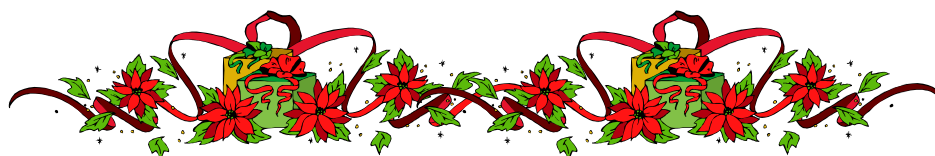
Special Dietary Needs _____

AT: Andre's 4154 Telegraph Road, St. Louis, MO

Christmas Party Menu

Choice of Top Round of Beef or
 Honey Baked Ham.
 Herbed Rosemary Potatoes
 Green Beans Almondine
 Glazed Amaretto Carrots
 Italian Salad
 Five item relish tray
 Fresh baked dinner rolls
 Freshly brewed coffee

*** Includes a four hour open bar and Chiffon Cheesecake.**



Happy Birthday



November

JoAnn Macias, 3
 Barbara Ogden, 12
 Mary Jo Kumer, 13
 Debbie Finklang, 19
 Virginia Hauser, 24
 Carolyn Swanson, 30

December

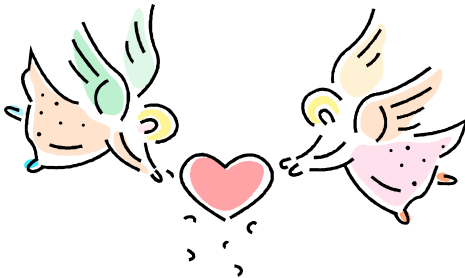
Joyce Bennington, 7
 Joan Love, 12
 Dorothy Baumgartner, 16
 Jean Lindsey, 22
 Judy Sloan, 27
 Debbie Christenson, 28
 Marilyn Hartnett, 29



Our Deepest sympathy

Carol Rufkahr's mother-in law passed away in October.

Margie Hurst a former member and board member of Gateway passed away on October, 8.



RX Report

Former member Louise Kern has fallen and broken her ankle.

Judy's husbandunderwent a surgical procedure in September and is doing very well.

Former member Mary Messmer received good news... the cancer on her liver is shrinking. She is very upbeat. Prayers are answered.

Ingrid Oertli's Mother had a Stroke in September.

New information for your Directory

Wilburn, Cheryll 636-332-4548	410 English Manor Dr.	Wentzville, Mo 63385
Vada Galvan	vjgpainter@hotmail.com	

Membership Due

Lorie is accepting membership checks for the 2008 year with Gateway. Checks received will be deposited within two weeks.

Also, just a reminder for the newer members, your 2008 SDP dues are required to be a member of Gateway for 2008. If anyone has any questions, please feel free to see Lorie at the November meeting. Look forward to seeing you.



Thank you
 Tracy Kocher &
 Red Rooster Crafts
 for the donation of the gift
 certificates for the first place
 winners of the retreat trivia night
 and trivia door prizes. Your
 generosity was greatly
 appreciated.

Vada, Cindy, and the retreat
 trivia teams!!

Gloria,

I wanted to let you know that we received the Memory Boxes and they are beautiful. All of the nurses were commenting how much they loved them. I certainly wish we would never need to use them but I am also so happy for you and your group for providing them to us for when we do need. Please pass on our thanks to all involve.

Terry Williams
 Department Coordinator
 SSM DePaul Health Center
 Women's Services

SDP News

Reception

Decorative Arts Collection Museum in Atlanta will have a Grand Opening Reception and Open House on November 9, 10 2007. For more details see Gloria Falk.

Paint for Freedom

SDP has a beautiful program called Paint for Freedom. Paint a card of encouragement for a service person who has served in Iraq or Afghanistan. Go to SDP website to learn more about this program and enjoy free downloadable patterns.

Online Painting Class

The Nest Online class will be a Transparent Rosemaling by Lois Mueller VGM.

Quality Handmade Crafts
 Custom Framing
 Counted Cross-Stitch
 Art & Craft Supplies
 Patterns & Fabrics

Hours: Monday thru Saturday 9A.M.-5P.M.
 Tracy Kocher 102 S. Jackson St.
 (573) 756-8060 Farmington, MO 63640
 email: theredrooster@sbcglobal.net

The Board would like to sincerely thank everyone who contributed the vast variety of beautifully painted items for our September auction. Once again, our own lively auctioneer, Mary Jo Kumer, sparked a spirited bidding competition that played a key role in the success of the event. The fun and laughter that our members and guests shared was a delightful experience. This activity raised \$552 to benefit our October Retreat. Any funds remaining after expenses will be transferred to the Memory Box program.



Proposed addition to By Laws

Subject: Term limitations for board officers

Article VI: Officers and their election

7. No officer may hold the same office for more than two (2) consecutive full terms. No member shall be an officer on the Executive Board for more than three (3) consecutive full terms. This will begin with the 2007 election.

Reason for change:

As the By Laws now stand there are no term limits for officers of the Executive Board. Theoretically the same 7 members can remain in office indefinitely. Although this is not likely to happen, why not take action now to avoid this situation. Every organization has term limits for their executive boards, including SDP. This proposal gives a board member a fair amount of time (up to 6 years) to complete any agenda and/or implement any ideas they may have.

I feel that we need new people with new ideas and a fresh outlook for our chapter moving into the future.

Respectfully submitted by Ellen Rohne CDA

Background Information: When the Bylaws were reviewed in 2006, the Bylaw Committee's proposed changes to **Article VI, 3** were approved and now reads as follows:

3. The term of Office shall be two years, commencing January 1 through December 31. President, Program Chairman, Newsletter Editor will be elected in Odd numbered years. Vice-President, Membership Secretary, Recording Secretary and Treasurer will be elected in even numbered years. This will begin with the 2007 election. An officer may resign their term after one full year and a new officer will be elected for the rest of the term.

Should the proposed addition (#7) above reinstating term limits be approved, the Board recommends that the text be added to #3 rather than becoming a new #7.

Reason for the Board's recommendation: The provisions concerning term of office resides in #3 and the new restrictions should be included there.



GATEWAY DECORATIVE ARTISTS

Chapter Meeting Minutes

September 9 2007

Board members in attendance: Gloria Falk, Marilyn Hartnett, Judy Dodson, Josée Laferrière, Donna Wessel, Kay Vuichard and Lorie Reece.

Meeting was called to order at 1:00 p.m.
Members present 45, Guests 2

Invocation was given by Joyce Miller.

The minutes from the July meeting were approved as published in the Newsletter.
The Treasurer's Report was approved as printed in the Newsletter.

Gloria greeted guests and members

Cheryll Wilburn, Nominating Committee Chair, gave a report on status of nominees for the November election. Elections for 2-year terms are President, Program Chairman, and Newsletter Editor. Elections for 1-year terms are Vice President, Recording Secretary, Membership Secretary, and Treasurer. Cheryll called each office and asked for nominations from the floor. No nominations were made. Candidates are still needed for several positions. If you would like to run for office, contact Cheryll. Absentee Ballots will be available by sending a S.A.S.E. to Cheryll. When returning a ballot, mark it as such on the outside of the envelope. Absentee ballots will remain sealed until opened at the November meeting by the election tellers. (This is what they are called in the bylaws) Returned ballots must be postmarked on or before Nov. 3 to be counted. Gold Brush Award Nomination forms are available. They should also be marked as such and will remain sealed until the Awards Committee meets.

Gloria reminded all the members who received the HD paint kits from Plaid that the painted piece must arrive at Plaid before Oct. 1.

Lorie introduced our guests, Diana Kapper and Shar Braun, and new member, Veronica Delgado. Names were drawn for the two painted tee shirts donated by Gloria for door prizes – winners were Josee Laferriere and Deb Christenson. Names were drawn for the 10 table decorations, fall ivy bowl candleholders, designed and donated by Donna Wessel.

Marilyn Hartnett gave the Program Chair report. At the November meeting Judy Dodson will be teaching Christmas Ornaments as the paint-in. Marilyn proposed not making table decorations/favors for the Christmas party and instead donating the money to Turning Point as our Christmas gift to them. The membership agreed. In 2008 we have Cheri Rol (April) and Mary Gibilisco (July) seminars scheduled. Karen Steiner will be teaching a Sharing Workshop (March). At the Linda Coulter Seminar Margaret Von Kaenel told us about two other artist groups in the St Louis area, MAG and SALI. SALI is having a meeting in U City teaching a Damask pattern with a shadow on Thursday, 9/12. MAG dues are \$20.00 a year and can be reached by calling 863-8383.

Donna had no additional financial information to report.

Jean Ellison thanked the Board for the refreshments and announced that Cindy Rupp, Vada and the Galvanetts will provide the refreshments for the November meeting.

Judy Dodson reported that to date our chapter has shipped 760 memory boxes. The chapter won the 2nd quarter Tole Friends contest for memory boxes and our chapter shipped the 100,000th memory box, due to the fact that former member, Janie Parisi, donated 140 boxes to ship and Mary Jo an additional 4. The prize for the 2nd quarter was a book, which became part of our library and paints that will be used to paint at our monthly Memory Box paint-ins on the first Tuesday of each month. Along with those gifts there were glass paints, paper paints, mediums, over 40 packets and some other books in very good condition. We still need an instructor to teach at the October paint-in. As a refresher the procedures for donating a memory box were included in the September Newsletter. When Judy called Turning Point for their wish list they told her that there had been an upsurge in families seeking their services. The Christmas wish list will be in the November newsletter. The deadline to register for Retreat is September 14th. This is also the last day to make reservations at the hotel. Don't forget to enclose a S.A.S.E to receive your secret pal's name and information. Vada is planning the entertainment. There will be a prize for the best costume at the Saturday night banquet. We will have 4 make-it-and-take-its over the weekend. Ellen Rhone is planning the Trade Show. So far Bill Childs (wood surface maker), Barrett House and Tracy Kocher (Red Rooster) will be having booths. This will be on Saturday from 10:00 to 1:00. The first 10 registrants for Retreat had their names put in a jar for the early registration prize. The winner was Lorie Reece.

Tickets were sold for the painted chairs and the winners were Dixie Reeb (Grapes) and Kay Peele (Roses).

Carol Rufkahr announced that there were still two openings for an Elizabeth Pruitt oil seminar being held at the Sunset Hills Community Room on October 19-21.

At the show and tell table Ellen Rhone displayed her winning 3rd place entry at the Hoot Convention Art Show. Way to go girl. Other members had also shared their work - one of them being a beautiful Magnolia on a Genesis paint box by Marilyn Hartnett.

A motion to adjourn was made by Mary Jo Kumer, 2nd by Carol Rufkahr.

The meeting was adjourned at 2:06 p.m.

A fund raising auction was held immediately after the meeting with Mary Jo Kumer serving as auctioneer.

Respectfully submitted,

Kay Vuichard



List of past Gold brush Awards

1987 Joycelynn Smutz
 1988 Judi Krause
 1989 Bonnie Stout
 1990 Gerry Klein
 1991 Bobbie Gray
 1992 Arlene Siebert
 1993 Barb Ogden
 1994 Carolyn Bacon
 1995 Jeanne Abraham
 1996 Annette Dozier
 1997 Gloria Falk
 1998 Jan Rosenburg
 1999 Mary Jane Jett
 2000 Ellen Rohne
 2001 Ruth Ann Thompson
 2002 Toni Dosser
 2003 Debbie Christenson
 2004 Laura Heathcote
 2005 Mary McDevitt



The Gold Brush Award

What: ***The Gold Brush Award*** is the highest honor bestowed upon a Chapter member. It is given to acknowledge outstanding contributions to the Chapter as well as dedication to the art of Decorative Painting.

Who: It is given to a member who sets an example for all of us, one whose dedication is above the norm. She promotes the interest the Chapter and stimulates interest in Decorative Painting both at Chapter functions and outside of Chapter activities. She gives unselfishly and without a thought of personal gain. Her contributions need not have been made just in the past year, but are of a long-standing nature.

When: ***The Gold Brush Award*** is given to only one member annually (not necessarily every year) and is a once in a lifetime honor. The award is presented at the December Christmas Party Meeting without prior announcement of the recipient.

How: To nominate someone for this high honor, fill out the form below. The Committee will research your nominee's qualifications based on information you and others give us. If you know of a specific service your nominee has performed, please state it briefly. If more information is needed a Committee member will contact you.

Please be conscientious in your choice and remember that this is not a popularity contest. A nomination box will be set up at the September and November meeting with extra forms available. **Please place your signed form into a sealed envelope and either drop in the box or mail to:**

Gold Brush Award 2007
Barb Ogden, Chairman
1424 Cave Springs Est. Drive
St. Peters, Mo 63376

FORM MUST BE SIGNED TO VALIDATE NOMINATION

Each chapter member is allowed to nominate only one candidate, which will be kept confidential.

My Nominee for *the Gold Brush Award* in 2007 is:

Reason: (State briefly - Specific Chapter and or community service)

Your Name: _____ Phone No: _____

Signature: _____

ELECTION



Official Ballot GATEWAY DECORATIVE ARTISTS Elections of Officers for 2008 Please vote for only one person per position by placing an X in the box.	
<u>President:</u>	
Gloria Falk	<input type="checkbox"/>
Write In: _____	<input type="checkbox"/>
<u>Vice President:</u>	
Write In: _____	<input type="checkbox"/>
Write In: _____	<input type="checkbox"/>
<u>Program Chairman:</u>	
Lorie Reece	<input type="checkbox"/>
Write In: _____	<input type="checkbox"/>
<u>Membership Chairman:</u>	
Jo Lair	<input type="checkbox"/>
Write In: _____	<input type="checkbox"/>
<u>Recording Secretary:</u>	
Jean Rogenhofer	<input type="checkbox"/>
Write In: _____	<input type="checkbox"/>
<u>Treasurer:</u>	
Donna Wessel	<input type="checkbox"/>
Write In: _____	<input type="checkbox"/>
<u>Newsletter Editor:</u>	
Elizabeth Geers	<input type="checkbox"/>
Write In: _____	<input type="checkbox"/>

PRESIDENT

Gloria Falk, TDA:

It's that time of year again. We are about to start our staggered terms for Gateway. My year as your President is coming to an end and I would welcome the opportunity to serve another term.

I believe one of the most important skills you need to bring to Gateways board is the **ability to listen**. I believe I possess that, and it helps me and the board, make informed decisions for our chapter. I try very hard to take the opinions of all members into consideration and do what is best for Gateway members as a whole. **I am asking for your vote in November.**

Thank you for your consideration, your vote is very important to me! If you are not going to be able to attend the meeting, please take time out today to request your absentee ballot from Cheryll, otherwise I will see you in November.

VICE PRESIDENT

No Candidate

PROGRAM CHAIRMAN

Lorie Reece:

Hi Ladies and Gentlemen.

Once again I have roped me into running for office. This year I thought I would try program chair as I have been told it is "easy" and if you believe that I have land to sell in the everglades!!!! I think the nominating committee is telling me that two years is long enough to put names with faces. I appreciate the fact that you nominated me the last two years. I have enjoyed membership. Now, with regards to the program chair, I hope to be able to do as well as Marilyn has. I am sure I will fall back on her as she has seminars schedule through '09, so I just have to think forward a couple of years. I want to thank Marilyn for the excellent job she has done and hope I can continue the excellent work she has done for the chapter. I would welcome a running mate though! Get involved Ladies!!!

MEMBERSHIP CHAIRMAN

Jo Lair:

Not Provided

ELECTION

RECORDING SECRETARY

Jean Rogenhofer:

I am honored to be asked to run for the office of Recording Secretary for Gateway. I have been a member of Gateway for over 20 years and have served on the board in the past as Recording Secretary and Newsletter Editor. I would appreciate your vote in November.

TREASURER

Donna Wessel:

From 1964 thru 1985, I held various secretarial positions for several major corporations headquartered in St. Louis. From 1986 until my retirement in May of 2006, I was employed by Schnuck Markets, Inc. first as a checker for 7 years and then as an office cashier for the remainder of my time with them. I have served Gateway as Nominating Chair, Recording Secretary, President and currently as Treasurer. I am running again for Treasurer for 2008. In addition to a willingness to serve, the qualities I can bring to the office are honesty, integrity, a strong work ethic and attention to detail. I have had a grand time this year trying to keep all those columns straight and would appreciate the opportunity to do so again. I hope that come November 11 you will vote for me for Treasurer.

NEWSLETTER EDITOR

Elizabeth Geers:

Recently retired and enjoys the leisure time immensely. Have 50 years business experience in middle management and administration. Am knowledgeable in most Microsoft business applications and will do my best to get the Gateway Gazette out in a professional manner. I have been painting since 1968 and a member of Gateway three times (as my life circumstances changed I was not able to paint at times, but always came back to it). I worked on the two National Conventions here in St. Louis and have served on committees in the past. Also served on committees and boards in women's clubs, garden clubs, and sororities. I understand the commitment and will do whatever I can to further the Chapter. Painting has been a life-saver several times and continues to be a source of enjoyment in my life. Friends and friendships in Gateway are cherished.



It is that time of year to once again ask members to run for office. With this election we will be starting the staggering of office terms.

•President; Program Chair; and Newsletter Editor will be elected for a two year term.

• Vice-President; Recording Secretary, Membership Secretary and Treasurer will be elected for a one year term.

The only requirement is being a member for 2 years (2006 & 2007) and having attended at least 5 meetings during that time...(this November meeting would count towards the 5 meeting requirement).

ABSENTEE BALLOTS
If you find you will not be able to attend the November meeting - Please send in your request immediately for an Absentee Ballot. Address it to: Cheryl Wilburn at 410 English Manor Drive, Wentzville, MO 63385 - be sure to include a Self-addressed stamped envelope.

2008 SDP Membership form

1. Member profile (Please print name and address as it should appear on the mailing label)

Name _____ Membership # (if renewal) _____
Household Member Name _____ Membership # (if renewal) _____
Business Name (if joining as a Business Member) _____
Mailing Address _____
City _____ State _____ Postal Code _____ Country _____
Email _____ Website _____
Phone (_____) _____ Fax (_____) _____

I am a member of at least one SDP Chapter and I wish to receive SDP e-mail chapter communication.

2. Membership Categories (Check one, please)

U.S.

\$40 Individual (\$45 after Dec. 1)

\$70 Business (\$75 after Dec. 1)

3. Business & Teacher Directory Resource Categories (optional)

Business members, Check all boxes that apply for the Business & Teacher Directory. Listings are FREE with your business membership.

Author Retailer
 Distributor/Wholesaler Teacher
 Home Studio Travel Teacher
 Manufacturer/Importer Other
 Publisher



4. Payment

Make checks payable to: SDP, 393 N. McLean Blvd., Wichita, KS 67203-5968. For faster service, use MasterCard or VISA and call (316)269-9300 ext. 105 or fax application to: (316)269-9191 Join online at www.decorativepainters.org

VISA MasterCard Exp. Date _____ Phone _____

Card Number _____ Signature _____

YES! This is a Gift Membership from _____ Memb.# _____

DUES POSTMARKED AFTER DEC. 1, REQUIRE AN ADDITIONAL \$5 POSTAGE/HANDLING FEE (DOES NOT APPLY TO NEW MEMBERS)

Your national dues need to go directly to SDP



➔ **Membership in this Chapter is open only to persons who are dues-paying members to the SDP**



2008 Gateway Decorative Artists membership form

Name _____ New Member Renewal
Last First Spouse

Address _____

City _____ State _____ Zip code _____

Phone Number _____ Email _____

Birth Date : Month ___ Day ___ SDP Membership # _____ (include a copy of SDP card)
Member of other chapters: _____

Check all that apply:

Individual Member Teacher Business Member Name of shop: _____

Certification: MDA CDA TDA

Preferred Painting Medium: Oil ___ Acrylic ___ Watercolor ___ Other: _____

What year did you start painting? _____

Favorite Artists: _____

Annual dues are \$20 per year, payable in Dec 31, 2007.

Please make check payable to: **Gateway Decorative Artists**

Mail to: **Lorie Reece 1092 Arnold Tenbrook Rd, Arnold MO 63010**



Checklist For September Meeting

- ❑ Bring your basic painting supplies.
 - ❑ Bring your friends.
 - ❑ Bring your projects to Show and Tell.
 - ❑ Bring wish items for Turning Point.
 - ❑ Memory boxes – painted and ready to ship.
 - ❑ Stand up to serve your chapter.
-
- ❑ **At the table:**
 - Sign up to receive your Ballot.
 - Sign up for Christmas Party.
 - Sign up for Karen Steiner Workshop.
 - Sign up for Cheri Rol Seminar and vote for the three projects.
 - See Mary Gibilisco Portfolio for her next seminar



It is time for me to give the torch to someone who will bring new ideas and her expertise to our chapter. I wish best of luck to the next newsletter editor and I know she will have members support to do it.

What a great experience I had serving on the board this past 3 years. I am very glad I made that decision. The best way to meet members and knowing the Chapter is to be on the board. Thanks to all officers I worked with it. That was fun working with you. Thank to members who elected me, and I hope you enjoyed reading your newsletters like I enjoyed doing it.

Josee Laferriere, Newsletter Editor 2005-2007

"SDP is the common thread that binds all of us together. This thread is woven into many branches that stretches to cover the needs of the creative souls, who gather under it for the warmth of friendship, education, companionship, leadership, business, manufacturing, teaching, charities, scholarships and all the many reasons others have given.

If your chapter cuts the thread, than it will unravels in due time just like it would with your favorite sweater or blanket you have cherish over the years that gave you so much warmth and comfort."

--Ladybug

Great advertising opportunities

Ad	Size	Members issue year	Non-Members issue year
Full Page	8 1/4 X 10 3/4	\$ 10.50 \$ 50.00	\$ 13.25 \$ 62.50
Half Page	8 1/4 X 5 1/4	\$ 8.00 \$ 37.00	\$ 10.00 \$ 46.25
Quarter Page	4 X 5 1/4	\$ 5.50 \$ 25.00	\$ 6.50 \$ 31.25
Business card format	4 X 2 1/2	\$ 3.00 \$ 12.50	\$ 3.75 \$ 15.50

Personal messages are \$.05/word

All ads must be paid for in advance of publication.

Ads should be camera ready, which means typed, artwork completed and ready to print. Gateway Gazette is good advertising for those wishing to advertise their business, shop, classes, wood, painting supplies or other services.

For more information call Josee Laferriere 636-327-9060 or [email her at newsletter@gatewaydecorativeartists.com](mailto:email_her_at_newsletter@gatewaydecorativeartists.com)

The Gateway Gazette is published five times a year by Gateway Decorative Artists. Greater St. Louis chapter, a not for profit organization formed in 1974 to stimulate interest in and appreciation for the Art of Decorative Painting.

TO :
FIRST CLASS POSTAGE



Gateway Decorative Artists
Newsletter Editor:
JOSEF LAFERRIERE
2222 Blue Lake Dr.
Wentzville, Mo 63385
Newsletter@gatewaydecorativeartists.com



Gateway Gazette

Chapter Meeting

November 11, 2007
Sunday: 1:00 P.M.
At Maryland Heights Center
Door opens at 12:00

PROGRAM :
CHRISTMAS ORNAMENT

