



# Gateway Gazette

www.gatewaydecorativeartists.com

Volume 35 Issue 2

St. Louis, Missouri

March/April 2008

## What's Inside

Calendar	2
President's message	3
Vice President	4
Charity Corner	4
Program Chair	5
Seminar Pictures	5
Secretary's Report	6
Birthdays	8
Treasurer's Report	9
Membership Forms	10
Checklist	11

Gloria Falk will teach Roses on Fabric  
at the April paint-in.

**Chapter Meeting**  
**Sunday**  
**April 13, 2008**  
**At Maryland heights**  
**Center**  
**Doors Open:**  
**12:00 p.m.**



### *April Meeting*

#### *Refreshments*

*Gloria Falk*

*Jim Lair*

*Jo Lair*

*Lorie Reece*

*Jean Rogenhofer*

*Donna Wessel*

*Elizabeth Geers*

*Mary Jo Kumer*

*Ginger German*

Bring your own pre-washed shirt (light color); or if you wish a tote bag, visor, apron or anything fabric! Your Choice!

You will also want to bring a piece of cardboard to put under your shirt or in your tote bag, for sturdiness so the paint doesn't soak through to the other side. You may want to include a hair dryer, some masking tape or T-pins and a spray bottle.

Along with that bring your basic acrylic painting supplies: water bucket, palette, assortment of brushes, palette knife and paper towels.



*Chapter of*  
*National Society of*  
*Decorative Painters*

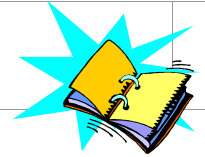
[www.decorativepainters.org](http://www.decorativepainters.org)

*Don't Miss This Chance to*  
*Learn to Paint Tole Roses!*

We will continue to reserve tables for the paint-ins. Put your painting supplies at one of these tables and be seated at another during the meeting. The paint-in designated tables have special table cloths on them.

**BOARD OF DIRECTORS  
2008**

**MARK YOUR CALENDAR**



**2008 Scheduled Events**

**President**  
Gloria Falk 636-561-6623  
president@gatewaydecorativeartists.com

**Vice-President**  
James Lair 618-258-9905  
vicepresident@gatewaydecorativeartists.com

**Program Chairman**  
Lorie Reece 314-971-0190  
program@gatewaydecorativeartists.com

**Membership Secretary and  
Publicity**  
Jo Lynne Lair 618-258-9905  
membership@gatewaydecorativeartists.com

**Recording Secretary**  
Jean Rogenhofer 314-739-3493  
secretary@gatewaydecorativeartists.com

**Treasurer**  
Donna Wessel 314-428-8226  
treasurer@gatewaydecorativeartists.com

**Newsletter Editor**  
Elizabeth Geers 636-947-4360  
newsletter@gatewaydecorativeartists.com

**Parliamentarian**  
To be announced

April 1	Memory Box Paint-in – Joan Love	Lindell Bank
April 13	Chapter Meeting	Maryland Heights
April 25,26,27	Cheri Rol, Oils	Wingate
May 6	Memory Box Paint-in – Mary Jo	Lindell Bank
May 17	GDA Board Meeting	Page/Lindbergh business
May 27-31`	National SDP Convention	Tampa, Florida
June 3	Memory Box Paint-in	Lindell Bank
June 8	Chapter Meeting	Maryland Heights
July 15	Memory Box Paint-in	Lindell Bank
July 22-26	Artist Expo	Houston Texas
July 25-27	Mary Gibilisco, Genesis Seminar	To be announced
August 5	Memory Box Paint-in	Lindell Bank
August 11-16	HOOT (Heart of Ohio Tole)	Columbus Ohio
August 24	GDA Board Meeting	To be announced
September 9	Memory Box Paint-n	Lindell Bank
September 14	Chapter Meeting	Maryland Heights
September 17-20	Tole Country	Oklahoma City, OK
September 27	Ellen Rohne Sharing Workshop	To be announced
October 7	Memory Box Paint-in	Lindell Bank
October 8-12	New England Traditions	Providence Rhode Island
October 19	GDA Board Meeting	To be announced
November 9	Chapter Meeting	Maryland Heights
December 2	Memory Box Paint-in Karen Steiner	Lindell Bank
December 7	Holiday Party	Andre's

**Area Representatives**

**South County**  
Joan Love 314-842-7288

**Illinois**  
Lida Gilham 618-656-9294

**North County**  
Judy Sloan 314-869-6942

**West County**  
Maureen Wasserman 636-227-2843

If you have anything to pass on to the Chapter, such as illnesses, congratulations etc. contact one of these people or your Membership Chairman, Jo Lynne Lair.

**DIRECTIONS FROM 270:**

*Dorsett Road West  
Right on McKelvey Rd.  
Right on Ameling  
Left on McKelvey*



**Chapter Meeting Location**

All 2008 Chapter meetings are held at the Maryland Heights Center, 2344 McKelvey Road, Maryland Heights, Missouri, 314-434-1919.

## President's Message ~ Gloria Falk

Spring is here and I am looking forward to warmer weather. I hope you all had a wonderful Easter.

Convention in Tampa, FL is around the corner and SDP wants you to come and “SHARE THE MAGIC” starting May 26<sup>th</sup>. Education and fun await everyone who attends. You have probably already received your HOOT books for the August convention in Columbus. So I imagine you are busy checking your calendars and signing up for classes at these conventions. I am waiting for information from HOOT – they are going to have some kind of special for people who plan a “bus trip” to the HOOT convention. I have been told the details are to follow soon.

Remember Gateway has a lot of painting opportunities also. Cheri Rol is coming to us April 25-27 –there are still a few openings in her seminar. Cheri is an absolute beautiful painter. She has won many awards for her work. In July, we have Mary Gibilisco coming back to teach us some more projects using Genesis paints. These are wonderful opportunities for those who are not able to go away and take seminars elsewhere.

If you do not want to keep and have any past issues of your gently used DP’s please contact Jo Lair at [artsonfire@sbcglobal.net](mailto:artsonfire@sbcglobal.net) or call her at (618) 258-9905. We can include them in a goody bag for our new members and/or guests.

Remember to join us at the Memory Box paint-ins at Lindell Bank on Mexico Road in St. Peters. We all have a great time learning new designs and techniques while accomplishing a goal for the Memory Box Program.

Please remember to bring your finished Memory Boxes to the April Meeting. Mary Jo and I are planning a nice gift basket drawing for those who donate time and/or money this year to the program.

I would like each of you to help on get the news out about our Chapter. There are free newspapers and community Newsletters that are most apt to print local news, yet are unknown outside a particular community. If you could get this information to Jo Lair or me I would appreciate it. Include a telephone number, editor’s names, addresses, email addresses and deadlines. Also note what kind of news is accepted. The contact information for a calendar listing will probably be different from an editor who is interested in human interest stories. We are planning a lot of activities and there are people out there who do not know what Decorative Painting is and the kinds of things we do for community service. As usual, we plan the meeting in Sept. to be our membership drive, but it’s not too early to get the advertising ready and start inviting people to come to our meetings as guests, to see what we are all about.

See you at the April 13th meeting.

## Vice President's Corner ~ Jim Lair

This year Retreat will be a memorable experience. Our theme is "Winter Carnival". We will be at Trout Lodge on October 24th, 25th, 26th in Potosi, MO. This is only a 90 minute drive from St. Louis. It should be at the peak of autumn color, so the drive and whole weekend promises to be gorgeous. The registration fee is \$45 and room rates are reasonable, \$89.00 per person double occupancy and \$59.00 each additional person up to 4 people to a room. When making your reservation be sure to tell them you are with Gateway Decorative Artists to insure your reduced room rate. These rates include all of your meals. Our block of rooms are reserved on the 3rd floor, with 2 of our classrooms on the 3rd floor as well and the 3rd floor lounge is where our trade show will be. All of the rooms have a balcony overlooking the beautiful lake. I am still looking for teachers for retreat. Even if you do not teach, consider "getting your feet wet" and submit 1-2 projects for selection or submit a make-it-and-take-it project. This is a great opportunity for our members and guests to try new mediums, ie: color pencil, pastel, oils, watercolors,, etc. Please contact me via email or phone and I will send you a teaching form, which I will need returned immediately. All projects need to be at the April meeting for voting. Be sure to bring them in @ 12:00 so photos may be taken. Please do not sign your projects until voting has been completed, if your project is already signed, place a small piece of tape over your signature. We will have our annual costume contest and our "Secret Pal" again this year for anyone who wishes to participate.

I want to give a great big thank you to Gloria and Mary Jo for a great start on our Memory Box Program. Let's keep up the great work and "Make History" by breaking our old record of completed boxes. The next Memory Box Paint In will be at the Lindell Bank on Tues, April 1st. Everyone is invited for a day of fun, with Joan Love painting an adorable patchwork hearts and daisies. Thanks to all of you who have submitted projects, volunteered and jumped in and helped out where needed.

See you at the April meeting !!!

Jim Lair

## Charity Corner

Join us at the Lindell Bank & Trust Company, across from the RecPlex. on Mexico Road in St. Peters. We usually start at 9:30a.m. and paint until 4:00p.m. You can come as early as 9:00 a.m. The bank has a kitchen with sinks, refrigerator, microwave, stove and a soda machine. Bring your lunch and basic painting supplies. Boxes are prepped and ready to paint. It's a really fun day! Our goal for 2008 will be to exceed the 1,022 boxes we sent in 2007. For more information call Mary Jo Kumer at 636-625-1328 or Gloria Falk at 636-561-6623 (or email Gloria at [arttouch@aol.com](mailto:arttouch@aol.com)).

We will collect memory boxes to ship out after the April 13th meeting. Please bring any completed boxes to the paint-ins or the regular meeting. Boxes will be available to check out for painting.

If you're not participating in this fun program you are missing a real treat! Lots of laughs and a fun day!



### ...Turning Point Shelter ~ Wish List

Laundry Detergent  
Shampoo  
Deodorant

Toilet Paper  
Conditioners

**NOTE:**

To donate money to Turning Point, be sure to make checks payable to **Turning Point**. Donations may qualify as tax deductions.

# Program Chair ~ Lorie Reece

## Workshops

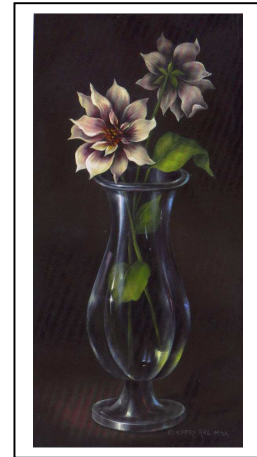
**Cheri Rol** will be here for a three day seminar *April 25-27, 2008*. Photos of the projects will be on display at the February meeting. The seminar is \$45 per day and there is a different project each day. The seminar will be held at the Wingate Inn and we'll start at 9 a.m. each day.



*Friday*



*Saturday*



*Sunday*

**Mary Gibilisco** is scheduled for a three -day seminar *July 25-27, 2008*. The cost per day of Mary's seminar is \$48. A deposit of \$40 should be made by June 30 to hold a place in this seminar. Each day begins at 9 a.m. at the Wingate Inn.



*Friday*



*Saturday*



*Sunday*

**Barb Ogden** is partnering with Checkered Cottage to do a paint-in at the September meeting.

**EllenRohne, CDA**, has agreed to do a one-day, Saturday Workshop *September 27th*.

Our Christmas Party will be held at Andre's again on December 7<sup>th</sup>. Everything was good last year and this seems to be a good location.

If you are teaching presently, have taught, or would like to teach, consider teaching a one-day Saturday workshop. Teachers receive \$150 for the day. The surface can be provided or you can let students know what to bring. We really appreciate member participation and love to experience what our members are doing. Contact Lorie Reece at the numbers below.

If you have questions about any seminars or workshops call Lorie Reece at 314-971-0190 or email at [program@gatewaydecorativeartists.com](mailto:program@gatewaydecorativeartists.com). We are still looking for programs for this year. Help us out!

**Mail or give seminar registration form with payment to:** Lorie Reece: 1092 Arnold Tenbrook Road, Arnold, Missouri 63010. A non-refundable, \$40 deposit is required to register for one or more days. Program Chairman should be notified of any cancellation, and will provide you with a waiting list, if available. It is your responsibility to sell your Seminar space and surfaces. [Check the website: www.gatewaydecorativeartists.com](http://www.gatewaydecorativeartists.com) for registration forms.

## From your Member Chair ~ Jo Lair

I want to welcome 2 new members to our Chapter: Rita Cooper - O'Fallon, IL and Sue Shockley, and returning member: Linda Nelson - St. Charles, MO

Also a thank you to Donna Wessel, who donated an adorable "Valentine Mice" painted t-shirt for our door prize at the February meeting. We had 42 members in attendance, which is great! Let's keep up the momentum and see more faces! Remember it is ONLY 10-15 hours out of 365 days. Come and join in our renewed energy and fun, and be sure to bring a guest.

If you would like to donate a door prize for one of our meetings, please let me know. It will be greatly appreciated. See you all at the April meeting! Jo Lynne Lair

Our own Marilyn McDonald gave a demonstration recently on Memory Boxes to the "Hawk Point Evening Club". She displayed one of our scrapbooks, showing some of the beautiful boxes we have created, and gave them details about the Program. They were so touched by her presentation they donated \$100 to help us with postage.

**Thank you Marilyn, for helping the Memory Box Program - we really appreciate it!**

**REMEMBER** If you need to buy decorative painting supplies and want the opportunity to support your Chapter at no cost to you, go to our website: [www.gatewaydecorativeartists.com](http://www.gatewaydecorativeartists.com) and click on the ARTISTS CLUB link on the first page. Do your shopping and the chapter will receive 10% of your purchase. Again, at no extra cost to you. To make sure we receive the money please inform the President, Gloria Falk or the webmaster Josee Laferriere with any purchases you have made through our website. If you click out of the site and try to go back in - you must enter through the Chapter's link for us to get credit for your purchases.

**Another bit of news.....** Speedball in North Carolina has purchased Houston Art Frame. They will be moving the business to NC on May 1. Tim Mulvey will still run the Artists Expo Houston- which this year is being held July 22 - 26.

The website address is: <http://www.artistexpohouston.com>. I will have books available at the meeting,

**Deadline for the June/July GatewayGazette is May 23<sup>rd</sup>. If you have anything to contribute please email to Liz Geers by this date.**

## Gateway Decorative Artists Chapter February 3, 2008, Minutes

Gloria Falk called the meeting to order at 1:05 pm. All board members were present. Vada Galvan gave the invocation.

Gloria asked for corrections to the November minutes as printed in the Newsletter. Mary Jo Kumer said her name was misspelled on page 5 of the Newsletter. It was spelled Kumar instead of Kumer. Karen Steiner said the Newsletter listed her workshop as doing the basket weaving in the morning and the painting in the afternoon. This is incorrect. Painting will be in the morning and basket weaving in the afternoon. Barb Ogden said the Newsletter listed her doing a paint-in after the September meeting, in conjunction with Barrett House. This should be with the Checkered Cottage. Corrections have been noted. With no further corrections and none pertaining to the minutes, they are approved as printed.

Gloria asked if there were any corrections to the December minutes as printed in the Newsletter. Since there were no corrections, the minutes are approved as printed.

Gloria asked if there were any questions regarding the Treasurer's Report as printed in the Newsletter. Hearing no questions, the Treasurer's Report will be filed.

Volunteers are needed to serve on various committees, such as: Retreat, Gold Brush, Nominating, Audit, Charity and Memory Box. Gloria has a volunteer list and asked those willing to help to sign up after the meeting.

Gloria told about a DAC Newsletter that she received for being a "friend" member. It has pictures of the museum and the reception in Atlanta, Georgia. To become a "friend" member, the donation is \$35/year. Information on this is in the Newsletter. If anyone is interested, they are welcome to look through the Newsletter after the meeting.

The board has recommended that we donate \$100 to the DAC again this year. Vada Galvan moved to donate \$100 and this was seconded by Lida Gillham. All were in favor. Motion carried.

SDP need painted items to sell at headquarters. 60% of proceeds go to the artisan and 40% to SDP. If interested, contact Miho. E-mail her at [MiHO@decorativepainters.org](mailto:MiHO@decorativepainters.org) or contact her at SDP Headquarters. SDP also wants a permanent collection at headquarters to show our art form. Most of the original collection was moved to the museum in Atlanta.

Gloria asked that anyone planning to go to Convention this year in Tampa to get in touch with her after the meeting.

Chapter Service Awards were given to all those who helped in 2007 and did not receive them at the Christmas Party. Gloria thanked everyone who helped last year.

Jim Lair mentioned a letter received from Danforth Elementary School in Riverview Gardens. They need volunteers to paint a mural of their mascot, a dragon, at the school. Jim asked for volunteers for this project. There were none.

Mary Jo Kumer reported on Turning Point and the Memory Box program. The Memory Box Paint-ins will continue again this year. They will be held the first Tuesday of each month at the Lindell Bank in St. Peters. Everyone is invited to come and paint. Mary Jo thanked all those who brought in Memory Boxes and supplies for Turning Point. She mentioned the book to sign when items are brought in for Turning Point. Be sure to put the value of items you bring so Gateway can get credit from National. Ginger German usually takes the items to Turning Point, but Cheryl Wilburn will be taking them this month. Ingrid Oertli asked how much of a cash donation to Turning Point actually went to the needs of the people, rather than administrative costs. Mary Jo said she didn't know, but would check. However, she suspected that very little went to administration, since it is such a small organization. Lida Gillham said she often gives donations to an Oasis group in Illinois. Mary Jo said to keep track of the amounts and mark that in the book, so Gateway gets credit.

Jim Lair gave a report on Retreat. This year it is going to be held at the YMCA Trout Lodge, in Potosi, on October 24, 25, and 26. The rooms are \$89 per person, double occupancy, which includes all meals. Single rooms are \$119.50. Because meals are included in the price of the room, the registration will be less than \$50. All rooms have a balcony that overlooks the lake. Also the Lodge has lots of activities available for guests. Ellen Rohne has volunteered to coordinate the Trade Show again this year. Jim has *Retreat Teacher* forms available for anyone interested. He would like to have these completed and returned to him by April 1<sup>st</sup>. Anyone submitting a projects or projects should bring them to the April 13<sup>th</sup> meeting by noon, so pictures can be taken. Jim showed a video of Trout Lodge.

Lorie Reece gave a report on upcoming Workshops and Seminars. On April 25, 26, and 27, we have Cheri Rol scheduled for a seminar. The cost is \$45 per day, with a different project each day. Projects are done on Masonite and Cheri will have surfaces available for purchase, or you may provide your own. July 25, 26, and 27, Mary Gibilisco will teach a seminar. Cost is \$48 per

day. Saturday, March 29<sup>th</sup>, Karen Steiner will teach both painting and basket weaving at a workshop. The cost is \$15 for the workshop and \$48 for supplies. September 27<sup>th</sup>, we will have a Workshop with Ellen Rohne. The cost will be \$15 for the seminar. All seminars will be held at the Wingate Inn, beginning at 9 am.

There is a directory spread sheet at the sign-in table. Please check to see if your information is correct. Let Jo or Lorie know if there are errors, so they can be corrected before the directories are printed. There are also sheets listing various upcoming events and conventions. Directories should be available by the next meeting. They were delayed due to the illness of Lorie and her friend who helps with the directories. Dues must be paid if you want to be listed in the directory.

Liz Geers advised that the next Newsletter deadline is March 23<sup>rd</sup>.

Jo Lair said that we have 42 members present and 3 new members. We also have 2 guests. Rita Almond and Betty Schmidt. Welcome! Names were drawn for the 12 beautiful table centerpieces. Lucky winners were: Cindy Rupp, Joanne Goers, Lida Gillham, Dottie Baumgartner, Ginger German, Lorie Reece, Jim Lair, Cheryl Wilburn, Judy West, Jean Love, Karen Steiner, and Sue Shockley. An attendance prize of a T-shirt, painted and donated by Donna Wessel, was won by Peggy Araki. There are 2 boxes of books, donated by Pat Wolf's neighbor, that are on sale for 10 cents each.

Marilyn Harnett is our Historian this year and she has brought albums to look through. Jo and Jim Lair brought pictures and information on upcoming classes and seminars they are offering. One is an oil painting class to be held here at the Maryland Heights Center next Saturday, February 9<sup>th</sup>. The other is a Dorothy Dent Seminar on Memorial Day week-end. For Show and Tell Donna Wessel brought in an oil painting that she did in Jo's last class. Joyce Miller brought some cards that she made. Vada Galvan brought in a painting of a butterfly. Ginger German brought a painting and Gloria Falk brought two framed colored pencil paintings she did with Janelle Johnson.

Marilyn McDonald will be teaching the Memory Box paint-in this Tuesday at Lindell Bank. This will be Roses and a baby rattle. In March, Marilyn Hartnett will be teaching a floral. Everyone is invited to come and paint. Gateway has purchased 36 boxes for each month's paint-in. These boxes were purchased through Expo International, but they will no longer be carrying them. Last year we purchased them for about \$1 each. They will be \$1.29 this year. Shipping costs have also increased. We shipped 1,022 boxes in 2007.

We were advised that the latest issue of the Decorative Painter will be delayed.

Donna Wessel said the Chapter has jewelry, pins and charms, at reduced prices, plus a few other items. Gloria added that Chapter Service Pins are available for \$10 each, In order to receive a free one, you must hold an office.

Gloria thanked Jean Ellison and the South County group for providing today's refreshments. They did a great job. Next month, the Board will be in charge of furnishing refreshments.

Gloria mentioned that we are still in need of a Parliamentarian. The person must be familiar with Robert's Rules of Order. Judy West volunteered to be considered for this position.

Karen Steiner will teach the paint-in after the meeting today. It is a winter scene on a scarf. Cost is \$5. She has extra scarves available for anyone who did not order in advance and wants to paint, or if anyone would like an extra one.

Gloria asked if there was any further business or announcements. Hearing none, Mary Jo Kumer moved to adjourn the meeting and this was seconded by Carol Rufkahr. The meeting adjourned at 2:15 pm.

Respectfully submitted, Jean Rogenhofer, Recording Secretary.



## Happy Birthday

Margaret Von Kaenel	March 21 <sup>st</sup>	Jean Hofmann	May 5 <sup>th</sup>
Kay Peele	March 29 <sup>th</sup>	Laura Heathcote	May 22 <sup>nd</sup>
Jo Lynne Lair	April 26 <sup>th</sup>	Judy West	June 1 <sup>st</sup>
Lida Gillham	April 28 <sup>th</sup>	Linda Nelson	June 6 <sup>th</sup>
Gloria Falk	May 3 <sup>rd</sup>	Marilyn McDonald	June 10 <sup>th</sup>
Joanne Goers	May 3 <sup>rd</sup>	Delia Larkins	June 14 <sup>th</sup>
Peggy Araki	May 4 <sup>th</sup>	Ingrid Orteli	June 22 <sup>nd</sup>



## 2008 SDP Membership form

### 1. Member profile (Please print name and address as it should appear on the mailing label)

Name \_\_\_\_\_ Membership # (if renewal) \_\_\_\_\_  
 Household Member Name \_\_\_\_\_ Membership # (if renewal) \_\_\_\_\_  
 Business Name (if joining as a Business Member) \_\_\_\_\_  
 Mailing Address \_\_\_\_\_  
 City \_\_\_\_\_ State \_\_\_\_\_ Postal Code \_\_\_\_\_ Country \_\_\_\_\_  
 Email \_\_\_\_\_ Website \_\_\_\_\_  
 Phone (\_\_\_\_\_) \_\_\_\_\_ Fax (\_\_\_\_\_) \_\_\_\_\_

I am a member of at least one SDP Chapter and I wish to receive SDP e-mail chapter communication.

### 2. Membership Categories (Check one, please)

#### U.S.

- \$40 Individual (\$45 after Dec. 1)  
 \$70 Business (\$75 after Dec. 1)

### 3. Business & Teacher Directory Resource Categories (optional)

**Business members**, Check all boxes that apply for the Business & Teacher Directory. Listings are FREE with your business membership.

<input type="checkbox"/> Author	<input type="checkbox"/> Retailer
<input type="checkbox"/> Distributor/Wholesaler	<input type="checkbox"/> Teacher
<input type="checkbox"/> Home Studio	<input type="checkbox"/> Travel Teacher
<input type="checkbox"/> Manufacturer/Importer	<input type="checkbox"/> Other
<input type="checkbox"/> Publisher	



### 4. Payment

Make checks payable to: SDP, 393 N. McLean Blvd., Wichita, KS 67203-5968. For faster service, use MasterCard or VISA and call (316)269-9300 ext. 105 or fax application to: (316)269-9191 Join online at [www.decorativepainters.org](http://www.decorativepainters.org)

VISA  MasterCard Exp. Date \_\_\_\_\_ Phone \_\_\_\_\_  
 Card Number \_\_\_\_\_ Signature \_\_\_\_\_  
 YES! This is a Gift Membership from \_\_\_\_\_ Membership # \_\_\_\_\_

DUES POSTMARKED AFTER DEC. 1, REQUIRE AN ADDITIONAL \$5 POSTAGE/HANDLING FEE (DOES NOT APPLY TO NEW MEMBERS)

**Your national dues need to go directly to SDP**



**Membership in this Chapter is open only to persons who are dues-paying members to the SDP**



## 2008 Gateway Decorative Artists membership form

Name \_\_\_\_\_ New Member  Renewal   
Last First Spouse  
 Address \_\_\_\_\_  
 City \_\_\_\_\_ State \_\_\_\_\_ Zip code \_\_\_\_\_  
 Phone Number \_\_\_\_\_ Email \_\_\_\_\_  
 Birth Date : Month \_\_\_ Day \_\_\_ SDP Membership # \_\_\_\_\_ (include a copy of SDP card)  
 Member of other chapters: \_\_\_\_\_  
 Check all that apply:  
 Individual Member  Teacher  Business Member  Name of shop: \_\_\_\_\_  
 Certification: MDA  CDA  TDA   
 Preferred Painting Medium: Oil \_\_\_ Acrylic \_\_\_ Watercolor \_\_\_ Other: \_\_\_\_\_  
 What year did you start painting? \_\_\_\_\_  
 Favorite Artists: \_\_\_\_\_

Annual dues are \$20 per year, payable by Dec 31, 2007.  
 Please make check payable to: **Gateway Decorative Artists**  
 Mail to: **Jo Lynne Lair, 106 Cooper Ave., East Alton, IL 62024**



## Checklist For April Meeting

- Bring basic painting supplies.
- Bring Show and Tell Projects.
- Memory boxes – painted, varnished, ready to ship.



### At the table:

- Sign up for Cheri Rol Seminar
- Sign up for Mary Gibilisco



### WE NEED A PARLIAMENTARIAN.....

If you know "Roberts Rules of Order", or will familiarize yourself with them, please call Gloria Falk at 636-561-6623.

### Great advertising opportunities

Ad	Size	Members		Non-Members	
		issue	year	issue	year
Full Page	8 1/4 X 10 3/4	\$ 10.50	\$ 50.00	\$ 13.25	\$ 62.50
Half Page	8 1/4 X 5 1/4	\$ 8.00	\$ 37.00	\$ 10.00	\$ 46.25
Quarter Page	4 X 5 1/4	\$ 5.50	\$ 25.00	\$ 6.50	\$ 31.25
Business card format	card 4 X 2 1/2	\$ 3.00	\$ 12.50	\$ 3.75	\$ 15.50

Personal messages are \$.05/word

**All ads must be paid for in advance of publication.** Ads should be camera ready, which means typed, artwork, completed and ready to print. Gateway Gazette is good advertising for those wishing to advertise their business, shop, classes, wood, painting supplies or other services.

For more information call Elizabeth Geers 636-947-4360 or email her at newsletter@gatewaydecorativeartists.com



## Our Deepest Sympathy

To Ingrid Orteli, in the loss of her father. Our prayers are with you.



### Other Area Seminars.....

Central Illinois Decorative Artists - Decatur, IL  
 Bobbie Campbell- April 25 & 26, 2008  
 Kerry Smith – October, 2008

Dorothy Dent - Memorial Day Seminar  
 May 23rd, 24th, 25th, 26th

Mary Carole Lawson – Labor Day Weekend 2008

Hosted by Jo & Jim Lair

Contact Jo at [artsonfire@sbcglobal.net](mailto:artsonfire@sbcglobal.net)

*Space is limited - Reserve Early!*

### STANDING COMMITTEE CHAIRS 2007

**Nominating Committee**  
 Cheryl Wilburn

**Refreshments**  
 Jean Ellison

**Gold Brush Award**  
 Mary Jo Kumer

**Librarian**  
 Barb Ogden

**Historian**  
 Marilyn Hartnett

### SPECIAL COMMITTEE CHAIRS 2007

**Christmas Party**  
 Lorie Reece

**Memory Boxes and Charity**  
 Mary Jo Kumer  
 Gloria Falk

**Webmaster**  
 JoseeLaferriere