



# Gateway Gazette

www.gatewaydecorativeartists.com

Volume 37 Issue 3

St Louis, Missouri

June/July 2010

## What's Inside

**Calendar.....2**  
**President's Message.....3**  
**Vice President.....4**  
**Charity Corner.....5**  
**Membership Chair.....7**  
**Secretary's Report.....8**  
**Program Chair.....11**  
**Checklist.....14**  
**Membership Forms.....15**

## Chapter Meeting

Sunday June 13th, 2010  
Maryland Heights Community Center at 1 pm

## Location

All Chapter Meetings are held at the Maryland Heights Center  
2344 McKelvey Road  
Maryland Heights MO  
314.343.1919



## Refreshment Committee

- Lida Gillham
- Dixie Reeb
- Delia Larkins
- Judy West
- Jean Hoffman
- Cathy Somraty
- Mary Jo Kumer
- Martha White



## Directions from I-270

- Dorsett Rd. west
- McKelvey Rd. right
- Ameling Rd. right
- McKelvey Rd. left



National Society of Decorative Painters  
www.decorativepainters.org

**June Paint in**  
**With Vada Galvan**

Patriotic Butterfly Pin

# Mark Your Calendars



## President

Gloria Falk 636 561 6623  
 president@gatewaydecorativeartists.com

## Vice President

James Lair 618 258 9905  
 vicepresident@gatewaydecorativeartists.com

## Program Chairman

Lorie Reece 314 971 0190  
 program@gatewaydecorativeartists.com

## Membership Secretary and Publicity

Jo Lynne Lair 618 258 9905  
 membership@gatewaydecorativeartists.com

## Recording Secretary

Jean Rogenhofer 314 739 3493  
 secretary@gatewaydecorativeartists.com

## Treasurer

Donna Wessel 314 428 8226  
 treasurer@gatewaydecorativeartists.com

## Newsletter Editor

Ingrid Oertli 314 843 3651  
 newsletter@gatewaydecorativeartists.com

## Parliamentarian

Sandra Reynolds 314 303 3434  
 artistic55@hotmail.com

## Area Representatives

### South County

Joan Love 314 842 7288

### Illinois

Lida Gillham 618 656 9294

### North County

Judy Sloan 314 869 6942

### West County

Maureen Wasserman 636 227 2843

If you have anything to pass on to the Chapter, such as news of an illnesses, congratulations, etc. contact an area rep or your Membership Chairman, Jo Lynne Lair.

## Standing Committee Chairs 2010

Nominating Committee	Cheryll Wilburn
Refreshments	Jean Ellison
Gold Brush Award	Vada Galvan
Librarian	Barb Ogden
Historian	Marilyn Hartnett

## Special Committee Chairs

Christmas Party	Lorie Reece
Memory Box and Charity	Gloria Falk Mary Jo Kumer
Webmaster	Josée Laferriere

## 2010 Scheduled Events

June 13 <sup>th</sup>	Chapter Meeting	Maryland Heights
June 26 <sup>th</sup> -28 <sup>th</sup>	Joanne MacVey Seminar	Gloria Falk's Studio
July 6 <sup>th</sup>	Memory Box Paint in	Lindell Bank
July 30,31, & Aug. 1 <sup>st</sup>	Janelle Johnson Seminar	Wingate Inn
Aug 3rd	Memory Box Paint in	Lindell Bank
Aug 9 <sup>th</sup> -14 <sup>th</sup>	Hoot	Columbus, Ohio
Sept 14th	Memory Box Paint in	Lindell Bank
Sept 25 <sup>th</sup>	Sharing Workshop with Gloria Falk	TBD
Oct 5th	Memory Box Paint in	Lindell Bank
Oct 29 <sup>th</sup> ,30 <sup>th</sup> & 31 <sup>st</sup> .	Retreat	Trout Lodge
Dec. 5 <sup>th</sup>	Christmas Party	Andre's
Dec 7th	Memory Box Paint in	Lindell Bank

# *News from our President*

Dear Painting Friends,

I am writing this as I prepare to go to our Society's biggest event of the year...The National Conference of Decorative Painters in Wichita, KS. We have lots of things planned to do, it should be an exciting time. Donna is attending the Chapters Gathering and will report on that at our June meeting, Kay Vuichard will join her.

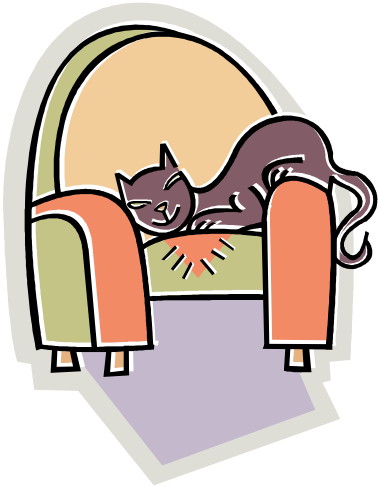
I have heard from some of the gals that attended Karen Steiner's Sharing Workshop, they had a great day in spite of the approaching storm. Quality Testing (Lorie's brothers company) proved to be a great place for the workshop. Our next seminar is coming up June 26<sup>th</sup> thru June 28<sup>th</sup>, with Joanne MacVey. If you have wanted to learn rosecalling, this is the class to take!! She is a Vesterheim Gold Medalist, and what an opportunity at a great price. Don't hesitate because she wants you to do the first day to learn the strokes....think back when we first started painting - how nice it would have been if we would have had the interim class on learning what to do with those brushes before we were asked to paint something. It's all a learning process - open yourself to another great learning experience.

We had a wonderful turnout at our last Memory Box Paint-in....15 people. We got 22 boxes completed and Joan Love brought in 2 she had done at home...they have all been sent off to three locations. Gals you need to join us for these, we have a fun time and get a pattern, instructions and sometimes a photo or two of the project. I know how busy life can get, so put it on your calendar, the FIRST Tuesday of every month (except Nov.) at the Lindell Bank in St. Peters on Mexico Road. It is very easy to find.

Jim and Jo have been hard at work planning our Fall Retreat. What a great selection we had to choose from in April. The chosen projects will be on display at the June meeting and you can sign up right away. We will also be selecting the Make-it/Take-it projects at this meeting. Consider submitting one. If you don't teach regularly, this is the time to get your feet wet, so to speak. Small projects, good pricing and a fun time to be had by all.

We certainly have had and will have lots of opportunity to enjoy our painting. Chapters are the essential element in spreading the word of our great art form, they give us the opportunity to develop friendships and link us together in our common interests. They also give us a chance to share our ideas, and light the path to our artistic education through seminars, sharing workshops, demonstrations and our retreat. Bring a guest to the next meeting and encourage them to join our club, so they too can enjoy these wonderful learning experiences. I will be looking forward to seeing you at the June meeting.

Gloria Falk, TDA  
President



## *News from the V.P. Easy Chair*

Well, flowers and gardens are planted - spring rains have kept them well watered and before you know it we will be enjoying nature's colorful bounty.

Now is also the time to review your Retreat books, they are online- print them off. Get those registration forms filled out soon. For those of you that ordered booklets from me at the last meeting- I will have them available for you at the June meeting.

We had some remarkable projects to vote on this year and the classes are going to be great! Class size will be limited to 12 this year so don't delay in sending in those registrations! I already have received some! Make sure you fill in your 2nd choice in case the first is filled. As in years past, we will have an early bird drawing for the first 15 received.

We are again fortunate to have our room block on the 3rd floor with the classrooms, this means limited walking for everyone to and from classes. We have the same outstanding classrooms as last year.

Since this is Halloween weekend, don't forget your most creative Halloween costume - you have plenty of time to let your imagination run wild. We will also be having game night- so bring your favorite card, board, dice, or domino games to share with the group.

Don't forget your cameras for those most memorable shots. We hope this year will be as colorful and beautiful. If you haven't been able to attend Trout Lodge - try to make it this year. Each room is comfortable, has a deck with a view, and the food is good and unending. The fun is also unforgettable.

This is the year to "**FALL In Love with Decorative Painting**"!!

Be sure to check out the projects on display at the June meeting. Hope to see you all there.

*Jim Lair, VP*

## Charity Corner

### Turning Point

**Emergency Shelter** gives assistance to those suffering from domestic violence and sexual assault. They offer crisis advocacy and peer counseling, assist victims in obtaining an Order of Protection from the abuser, and dealing with the Criminal Justice System. They help women gain access to available legal services, social service agencies, and programs that provide other types of needed help. Turning Point serves Franklin, Gasconade, Lincoln, Montgomery and Warren counties. Their location is confidential.

**Wish List** They can really use the following:

- Toilet Paper
- Dish Detergent
- Deodorant
- Hair brushes
- Hand lotions



### The USO

The **USO** requests donations of *paperback* books and snacks. Please bring your donations to the meetings and they will be delivered to the USO.

### Riverbend Humane Society

Our shelter is so grateful for our support and caring. A lot of you have given and helped them out. They are at full capacity for both cats and dogs right now. Many of you are not aware that this shelter is so dedicated to our 4 legged friends - that when other shelters place some of their animals on the not adoptable or the "end of the line" list to be euthanized, Riverbend goes and gets them to give them another chance at finding a loving home. If you or someone you know is considering adoption - please keep Riverbend in mind.

Riverbend has set up a building fund account because the shelter is need of some costly repairs. If any of you would like to contribute to the building fund, it would be greatly appreciated. Make checks payable to; Riverbend Humane Society. Thank you for your continued generous support of these furry friends who cannot help themselves and depend on us and need our help.

#### Riverbend Wish List

**Cat food** - dry and canned

**Kitty Toys and Beds** (if you would like to donate jungle gyms new or used they would also be appreciated)

**Kitty Litter** - any kind

**Dog food** - dry and canned

**Large water dishes for dogs**

**Cleaning supplies** - Bleach, all purpose cleaner (i.e.: Pine Sol, Clorox Green Works, etc) and Dish Soap

**Bedding**

**Unused coupons for any of the above**

Donations of money go to offset veterinary expenses and food for the animals. Please make checks payable to: Riverbend Humane Society They also have a Resale Thrift Store and gladly accept any usable, working items for the home.

# Memory Box Program

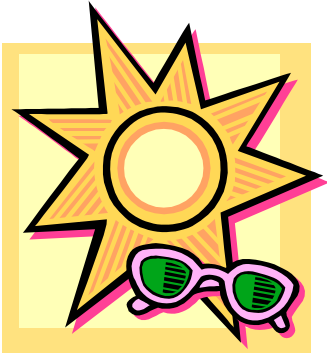


## MEMORY BOX PROGRAM

As of May 31 we have painted, created, and delivered 234 boxes. That averages out to almost 47 boxes a month. Our next MB paint-in is scheduled for July 6 – with Barb Ogden.

Aug.3 – with Ginger German.  
Sept.14 – Still available  
Oct. 5 – Kay Vuichard  
Dec. 7 – Still available

Please join us at the Lindell Bank  
On Mexico Road in St. Peters.



## *News from your Membership Chair*

We had great attendance at the April meeting - and the Retreat projects for voting were outstanding!! It was hard to choose. Our member's artistic skills are just getting better and better.

Be sure to come to the June meeting and choose your Retreat projects to paint. Classes will fill quickly, so don't wait too long.

Bring a friend to the meeting and encourage them to attend our Retreat - it is open to non members as well

Please welcome returning members

Judy Dodson and Laura Mayo and add their information to your directory.

Judy Dodson

4554 Briargate Drive, St. Charles, MO 63304

636-936-0384

B/D 01-07

Email: judy.dodson@sbcglobal.net

Laura Mayo

PO Box 412, Bismark, MO 63624

573 -734-2154

B/D 12-11

Email: dlaam@earthlink.net

If any of you would be kind enough to donate door prizes - please see me after the meeting. I will be needing door prizes for Sept. and November meetings. Your generosity will be greatly appreciated.

See you all at the June meeting!

*Jo Lynne Lair, Membership Chairman*



*To all in need, our thoughts and prayers are with you during this difficult time*

Those in need of healing prayers include Marilyn Hartnett and Barb Ogden, recuperating from surgery

Heartfelt condolences sent to family friends of former GDA member and art teacher Pat Duckworth and her husband Ramon who passed away May 10<sup>th</sup> in Orlando , Fl.



## GATEWAY DECORATIVE ARTISTS MEETING MINUTES - APRIL 11, 2010

Gloria Falk called the meeting to order at 1:10 p.m. All board members were present. Ginger German gave the invocation. Gloria welcomed all members and guests.

Gloria asked if there were any corrections to the February minutes, as printed in the Newsletter. Hearing no corrections, the minutes are approved as printed.

Gloria asked if there were any question regarding the Treasurer's Report, as printed in the Newsletter. Hearing no questions, the Treasurer's Report will be filed.

Gloria presented the Service Awards, with the help of Mary Jo Kumer, to those who were not at the Christmas Party or at the February meeting.

Kim Baker stopped in at our meeting and spoke about the rotating art shows that are displayed at the Maryland Heights Center. Artwork is displayed for a 6 week period. Gateway Pastel Artists currently have their work displayed now. They are a group of about 60 members and meet the 2<sup>nd</sup> Monday of every month in Webster Groves, from 7:00 to 9:00 p.m. They invited anyone interested to visit or join their group. Their dues are \$30.00 per year.

Gloria talked about the pins we will be painting to sell at our table in Wichita. She will be hosting a paint-in at her house on Wednesday, the 14<sup>th</sup>, and invited anyone that is interested in painting these pins to come. Starting time will be 9:30 a.m.

Gloria asked if everyone had a chance to look at the "Paint for Freedom" cards that are on display. We were asked to paint 10 of these and she e-mailed everyone, asking for volunteers. She thanked those that volunteered for this community project. Five of these cards will be mailed back to the company that supplied these cards to us and will be put on display at the National Conference in Wichita. They will then be mailed to the Golden Star Mothers for distribution. The other 5 are to be given out locally. Gloria plans to contact the VFW and USO.

If anyone would like to order any merchandise from SDP, see Gloria after the meeting and she will be glad to get it. Unfortunately, she forgot the SDP order form.

Jim Lair gave a report on our up-coming Retreat on October 29<sup>th</sup>, 30<sup>th</sup> and 31<sup>st</sup> at the YMCA Trout Lodge. Retreat projects are on display to vote on after the meeting. We were able to get a little cheaper rate this year.

The Make-it-take-it Projects are to be displayed and voted on at the June meeting. It was decided that the teachers would be paid \$25.00 for teaching a make-it-take-it project.

The Retreat Booklets will be available on the internet. If you do not have internet and would like to receive a printed copy, please sign the list after the meeting. The black and white copies are free, but if you want one in color, the cost will be \$3.00.



Mary Jo Kumer gave a report on Memory Boxes. Some boxes were recently given to the Lake St. Louis Hospital. Gloria will be teaching the May Memory Box paint-in. Marilyn McDonald will teach the June paint-in. Ginger German will teach the August paint-in. We are still looking for teachers for the months of September, October and December. Everyone is invited to come and paint. You will receive a free pattern, photo and instructions.

Lorie Reece announced that Barb Ogden will be teaching the paint-in after today's meeting. The cost will be \$3.00.

Karen Steiner will teach a workshop on Saturday, April 24<sup>th</sup>. It is a lighthouse painted on a 12" x 12" ceramic tile. The class fee is \$15.00 and the project fee is \$10.00. This will be held at Quality Testing Company in Maryland Heights.

Joanne MacVey will be teaching a stroke work seminar on June 26<sup>th</sup>, 27<sup>th</sup> and 28<sup>th</sup>. Cost is \$45.00 per day. So far, we only have 10 people signed up for this. It will be held at Gloria's house.

Janelle Johnson will be teaching a colored pencil seminar on July 30<sup>th</sup>, 31<sup>st</sup> and August 1<sup>st</sup>. This will be held at the Wingate Inn and cost is \$45.00 per day. Friday's class is full and we only have 2 openings for the Saturday and Sunday class. The special paper for the classes will be available at our June meeting. Friday's paper will be \$6.50 and it will be \$9.25 for the other class.

Lorie reminded everyone that refunds are not normally given if you are unable to take a seminar that you paid for. You should try to find someone to buy your space or contact Lorie to see if there is someone on a waiting list. In an extreme emergency, a refund might be given after the board makes such a decision.

The pieces that Maureen McNaughton painted at her seminar and donated to our chapter are on display. We will sell tickets for "Opportunities of Ownership" at our chapter table in Wichita. We would also like everyone to help sell raffle tickets. Colored flyers are available to show. We will have the drawing at the November meeting.

Vada Galvan will be teaching a butterfly pin after the June meeting.

Lorie and Mary Jo showed the projects brought in for Show and Tell.

Cheryll Wilburn gave a talk on Guide Dogs of America. A list of donations needed is printed in the Newsletter.

Ingrid Oertli advised that the next Newsletter deadline will be May 21<sup>st</sup>.

Jo Lair reported that we have 48 members present and 2 guests. Four door prizes were donated today by Donna Wessel, Josee Laferriere, Sharon Hall and Jeanette Bishop.

There are 21 donated, painted Memory Boxes on the tables. The angels were started by Michelle Bastean and finished by Ginger German.. We have lots of unpainted Memory Boxes available for anyone wishing to take some home to paint.

Jo mentioned that Lisa Retzer's name should be deleted from your directory, as she has not paid her dues.

Donna reported that there are lots of free books on the table that Mary Messmer's husband, Paul, donated to our chapter.. She also has chapter patches and jewelry for sale at the chapter table.

Jean Ellison thanked today's Refreshment Committee for all the good food at today's meeting. Those on the committee are: Ginger German, Elizabeth McClintock, Debbie Finklang, Barb Ogden, Marilyn McDonald, Karen Steiner, Liz Geers, Mary Jo Kumer and Gloria Falk. The June refreshments will be provided by the Illinois group.

With no further business, Mary Jo Kumer made a motion to adjourn. This was seconded by Carol Rufkahr. The meeting adjourned at 2:00 p.m.

Respectfully submitted,

Jean Rogenhofer,  
Recording Secretary

*We have a new Parliamentarian!*

Sandra Reynolds has agreed to serve as Parliamentarian. Thank you Sandra!



## *From the desktop of your seminar chairman☺, Lorie Reece...*

The next Sharing workshop will be with Gloria on September 25<sup>th</sup>. The cost is \$15 payable to Gateway. Information to follow on supplies needed.

You still have time to sign up for JoAnne MacVey seminar on June 26<sup>th</sup>, 27<sup>th</sup> and 28<sup>th</sup>. Cost is \$45/day with Saturday being mandatory. Please have final payment at the April Meeting.

There are only a couple of spaces left for Janelle Johnson's class on July 30<sup>th</sup>, 31<sup>st</sup>, and August 1<sup>s</sup>. Please be sure to sign up at meeting. The cost for the class is \$45 per day with a \$45 deposit. Final payment is due at the June meeting. We will be doing the 2 day bamboo and copper pot and the Oriole Bird with orange slice. You can view the oriole on Janelle's webpage, [www.janellejohnson.com](http://www.janellejohnson.com)

## *Future Seminars*

### *Carol Spohn -May 14, 15, 16th 2011*

Carol has been painting since 1989 when she learned to paint on her lunch hour. She has been painting exclusively in watercolor since 2002. She is also a published artist. She works a lot with different "things" when painting. You might use a geranium leaf to make a print within the watercolor; you might use another medium with the watercolor to make a different effect. She is very creative. I have painted with her at SDP and she is a lot of fun to take from, very casual and personable. Cost will be determined on class size. Please check out her website at [www.carolspohn.com](http://www.carolspohn.com).

### *Annette Long- October 8,9,10, 2011*

Annette has been painting since the 1980's and started her own business in 1997. She is a published teacher and has been to Japan for the Artist of the World Exhibition. She works with Wood and Porcelain. Her pieces are beautiful. Cost will be determined on class size. Please visit her website at [www.annettelong.com](http://www.annettelong.com).

### *Mark Polomchak-November 2012*

Water color, dates to be determined. Please visit his website at <http://www.polomchak.com/>

Check the website: [www.gatewaydecorativeartists.com](http://www.gatewaydecorativeartists.com) for registration forms.



**Mary Carole**

## *Other Seminars*

**September 3<sup>rd</sup> to 6<sup>th</sup> followed by portrait seminar Sept. 7<sup>th</sup>-12<sup>th</sup>  
See ad for details and photos.**



GATEWAY DECORATIVE ARTIST OF  
ST. LOUIS, MISSOURI

Own your own Maureen McNaughton Art!  
*Opportunities of Ownership*  
*Will be held on November 14, 2010*

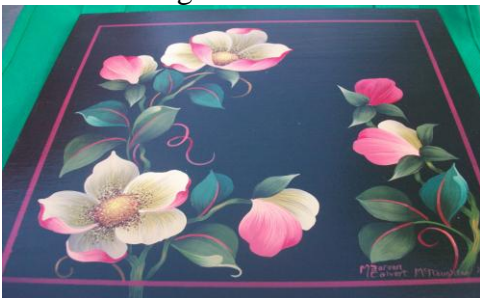
First Drawing



Second Drawing



Third Drawing



---

1 Opportunity of Ownership- \$1.00     6 Opportunities of Ownership = \$5.00

Name: \_\_\_\_\_

Address: \_\_\_\_\_

Phone Number and E/Mail Address: \_\_\_\_\_



RACE OVER TO OUR SALE!!!  
LAST TWO SATURDAYS IN JULY  
**EVERYTHING MUST GO/WE ARE MOVING**

LOTS OF **FREE FREE FREE** STUFF!!!

INCLUDING: PAINTABLE – TINWARE, GREAT  
WOOD PIECES, MACHE' ITEMS (HEARTS, BOXES  
ETC.), beautifully painted treasures, some chairs  
& furniture pieces to paint and MORE! **NOTHING OVER  
\$5!!!**

DON'T MISS IT – **JULY 24 & 31 – SAT. 11:00 – 2:00**

**CALL JAN @ 314-432-8964** for available weekdays...

DIRECTIONS: 1727 Featherwood Dr, Creve Coeur, Mo.  
CLOSE TO WESTPORT PLAZA. #270 to East on Olive  
Blvd. then left onto Craig Road. Continue past Craig  
School to stoplight then turn Right onto Villa Dorado. 4<sup>th</sup>  
street on Right is Featherwood and 2<sup>nd</sup> house on Right. E-  
mail: [janart7070@sbcglobal.net](mailto:janart7070@sbcglobal.net)



A Maureen McNaughton Butterfly packet was checked out of the Library at the April meeting. If someone happened to accidentally pick it up - please return it to me at the June Meeting.

**Next Newsletter Information Deadline**  
**August 20<sup>th</sup>, 2010**

## Checklist for June Meeting

- Bring show and tell projects
- Memory Boxes—painted, varnished, ready to ship
- Books and snacks for USO
- Donations for Turning Point
- Donations for Riverbend Animal Shelter
- Bring your usual painting supplies
- **Bring a Friend**

### *June*

1 Judy West  
 6 Linda Nelson  
 10 Marilyn McDonald  
 14 Delia Larkins  
 15 Liz Colvin  
 22 Ingrid Oertli  
 26 Jean Rogenhofer

### *July*

13 Cathy Somraty  
 17 Jean Ellison  
 20 Dixie Reeb

### *August*

1 Ann Mohrman  
 2 Jean Abraham  
 6 Elizabeth McClintock  
 7 Sharon Hall  
 8 Carol Rufkahr  
 13 Jim Lair  
 18 Jacqui Fowler  
 24 Sue Struckhoff

### *September*

3 Delores Kessler  
 4 Lovella Mauer  
 9 Karen Steiner  
 13 Linda Rocklage  
 20 Jeanette Bishop  
 20 Josée Laferriere  
 21 Lorie Reece  
 22 Maureen Wasserman  
 25 Jean Wideman  
 30 Liz Geers  
 30 Kathy Otto





## Your National Dues go directly to SDP

Name \_\_\_\_\_ Membership # (if renewal) \_\_\_\_\_  
Household Member Name \_\_\_\_\_ Membership # (if renewal) \_\_\_\_\_  
Business Name (if joining as a Business Member) \_\_\_\_\_  
Mailing Address \_\_\_\_\_  
City \_\_\_\_\_ State \_\_\_\_\_ Postal Code \_\_\_\_\_ Country \_\_\_\_\_  
Email \_\_\_\_\_ Website \_\_\_\_\_  
Phone ( \_\_\_\_\_ ) \_\_\_\_\_ Fax ( \_\_\_\_\_ ) \_\_\_\_\_

I am a member of at least one SDP Chapter and I wish to receive SDP e-mail chapter communication.

### 2. Membership Categories (Check one, please)

#### U.S.

\$40 Individual (\$45 after Dec. 1)

\$70 Business (\$75 after Dec. 1)

### 3. Business & Teacher Directory Resource Categories (optional)

**Business members**, Check all boxes that apply for the Business & Teacher Directory. Listings are FREE with your business membership.

<input type="checkbox"/> Author	<input type="checkbox"/> Retailer
<input type="checkbox"/> Distributor/Wholesaler	<input type="checkbox"/> Teacher
<input type="checkbox"/> Home Studio	<input type="checkbox"/> Travel Teacher
<input type="checkbox"/> Manufacturer/Importer	<input type="checkbox"/> Other
<input type="checkbox"/> Publisher	



### 4. Payment

Make checks payable to: SDP, 393 N. McLean Blvd., Wichita, KS 67203-5968. For faster service, use MasterCard or VISA and call (316)269-9300 ext. 105 or fax application to: (316)269-9191 Join online at [www.decorativepainters.org](http://www.decorativepainters.org)

VISA  MasterCard Exp. Date \_\_\_\_\_ Phone \_\_\_\_\_

Card Number \_\_\_\_\_ Signature \_\_\_\_\_

YES! This is a Gift Membership from \_\_\_\_\_ Membership # \_\_\_\_\_

DUES POSTMARKED AFTER DEC. 1, REQUIRE AN ADDITIONAL \$5 POSTAGE/HANDLING FEE (DOES NOT APPLY TO NEW MEMBERS)

**Membership in this Chapter is open only to persons who are dues-paying members to the SDP**



### 2010 Gateway Decorative Artists Membership form

Name \_\_\_\_\_ New Member  Renewal   
Last First Spouse

Address \_\_\_\_\_

City \_\_\_\_\_ State \_\_\_\_\_ Zip code \_\_\_\_\_

Phone Number \_\_\_\_\_ Email \_\_\_\_\_

Birth Date : Month \_\_\_\_ Day \_\_\_\_ SDP Membership # \_\_\_\_\_ (include a copy of SDP card)  
Member of other chapters: \_\_\_\_\_

Check all that apply:

Individual Member  Teacher  Business Member  Name of shop: \_\_\_\_\_

Certification: MDA  CDA  TDA

Preferred Painting Medium: Oil \_\_\_\_\_ Acrylic \_\_\_\_\_ Watercolor \_\_\_\_\_ Other: \_\_\_\_\_

What year did you start painting? \_\_\_\_\_

Favorite Artists: \_\_\_\_\_

Annual dues are \$20, payable by Dec 31, 2010. Please make check payable to: **Gateway Decorative Artists**

Mail to: **Jo Lynne Lair, 106 Cooper Ave., East Alton, IL 62024**



● Gateway Decorative Artists II - Look what is coming !!

4 day - Annual Labor Day Seminar followed by 5/1/2 day Portrait Seminar Sept. 3rd, 4th, 5th & 6th - Portrait Sept. 7th, 8th, 9th, 10th, 11th & 12th Featuring 10 action packed days

painting with Guest Artist: Mary Carole Larson!

Location; #33 South Ninth Street - East Alton, IL 62024

Fees: \$435.00 for all 4 days of Labor Day Seminar or \$115.00 per day Deposit of \$75.00 per day for each day you wish to paint.

\*\*\*\*\*Portrait Seminar Fees are separate

Seminar fees include ALL supplies: Paint, thinner, medium, palette, easel, patterns, photos, reference materials, canvas and lunch.

52" Plasma screen TV monitors will be used for additional visual aid.

BYOB: Bring your own brushes! We have loaner brushes available for those of you who do not have oil brushes.

The seminar location is very spacious, well lit, handicap accessible with convenient restroom and kitchen facilities.



Fri: "Wolf in the Timber"

Cautious wolf closely watching beside some birches

Sat: "Pink Peonies"

Lovely pink blossoms in full bloom arranged in a glass vase



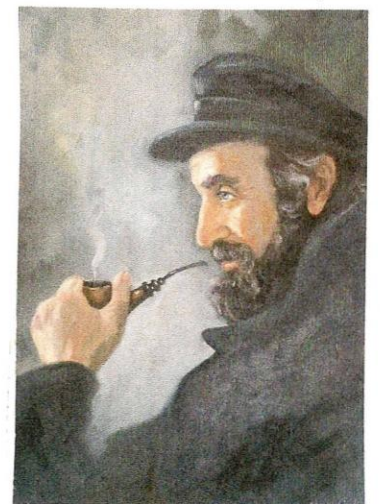
Sun: "Victorian Lady"

Beautiful Victorian lady dressed in purple velvet gown & hat adorned with a feather



Mon: "Old Sea Captain"

Salty old sea Captain with his pipe contemplating His next journey



For additional information, flyers, and registration forms, please contact your hosts:  
Jim Liar - VP Gateway and Jo Lair – Membership Chairman at 618-258-9905 or  
artsonfire@sbcglobal.net



### Sandra's Art Depot

Ribbon cutting June 8<sup>th</sup> at 5:15 pm with the Columbia Chamber of Commerce.

Grand Opening is June 21<sup>st</sup>

207 N Main, Ste 108, Columbia, IL

All who attend will receive a small open back frame as a free gift.

## Recipes from Jo Lair

### Oatmeal Bread

*Dorothy Dent Republic, MO*

- |                    |                           |
|--------------------|---------------------------|
| 1 c. rolled oats   | 1/2 c. molasses or honey  |
| 2 c. boiling water | 2 1/2 tsp. salt           |
| 2 pkg. dry yeast   | 2 T. butter, softened     |
| 1/3 c. warm water  | 6 c. all-purpose flour--" |



Pour boiling water over oats, and let stand 1/2 hour, or until lukewarm. Dissolve yeast in warm water and add to oat mixture. Combine molasses or honey, salt, and butter; add to oat mixture. Add flour, mixing in 4 cups. Work in the other 2 cups flour. Knead for 10 minutes, (adding a bit more flour if needed, until dough is only slightly sticky). Shape into a mound and place in greased bowl. Cover and let rise until double. Punch down until almost original size. Shape into 2 loaves and place in well-greased pans. Cover and let rise again. Bake at 325<sup>o</sup> for 50 minutes. Turn out on rack to cool.

Note: When deciding to use molasses or honey, molasses produces darker colored bread; honey makes lighter bread. This is my favorite dark bread recipe.

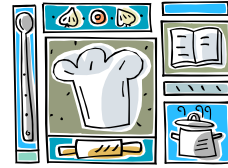
### Broccoli Corn Bread

*Doris Melton Sylva, NC*

- |   |                                |
|---|--------------------------------|
| 1 (10-oz.) pkg. frozen chopped broccoli | 4 eggs                         |
| 2 boxes Jiffy Corn Meal Muffin Mix      | 1 tsp. salt                    |
| 1 med. onion, chopped                   | 1 c. mayonnaise                |
|   | 1 c. small curd cottage cheese |
|   | 1 c. shredded cheese           |

Cook broccoli and drain. Mix remaining ingredients with broccoli. Pour into greased, 10 x 14 pan. Bake at 375<sup>o</sup> for 35 minutes.

## Recipes from Karen Steiner



### **No -Bake Lemon Cheesecake from Pampered Chef "Classics" Cookbook**

By Karen Steiner

Light, luscious and lemony, this no-bake desert is ready to eat in less than an hour. Sliced fresh strawberries add a pretty touch.

- 12 (2 ½") graham cracker squares (approximately 1 c chopped)
- 2Tbs reduced calorie stick margarine melted
- 1 pkg (3 ounces) lemon gelatin
- 1 lemon
- ½ c water
- 1 container (16 oz) fat-free sour cream
- 3 ounces light cream cheese (Neufchatel), softened
- 1 8 oz container light frozen whipped topping, thawed
- Strawberries (or other berries) for garnish
- Double recipe for a 9 X 13" baking dish

For crust: finely chop graham crackers. Microwave margarine on high for 20 seconds till melted. Add crumbs. Mix well. Press crumb mix in 13 x 9" baking pan. For filling, sprinkle gelatin over water in a small mixing bowl. Microwave on high 1 minute or until gelatin is dissolved when stirred. Zest 1 tsp lemon zest, set aside. Add 2 Tbsp of the lemon juice to the dissolved gelatin. In a large mixing bowl, combine reserved lemon zest, sour cream and cream cheese until well blended. Now gradually whisk in the gelatin mixture till smooth. Gently fold in whipped topping and spread evenly over crust. Refrigerate 45 minutes or until set. Cut into 12 squares and place berries on top of each piece.

### **Pasta/Cucumber Salad** by Karen Steiner

- 1 (8oz) pkg spiral pasta
- 1 medium onion
- 2 large cucumbers

Dressing: mix in jar or blender:

- 1 ½ c sugar
- 1 Tbsp parsley flakes
- 1 c water
- 1 tsp pepper
- ¼ c vinegar
- ½ tsp garlic salt or powder
- 1 tsp salt
- 1 Tbsp prepared mustard
- 1 Tbsp Accent seasoning

Cook and drain your pasta. Peel and slice cucumbers and onion. Mix pasta, cucumbers and onion together and add dressing. Refrigerate overnight before serving.

### Great advertising opportunities

Ad	Size	Members issue year	Non-Members issue year
Full Page	8 1/4 X 10 3/4	\$ 10.50 \$ 50.00	\$ 13.25 \$ 62.50
Half Page	8 1/4 X 5 1/4	\$ 8.00 \$ 37.00	\$ 10.00 \$ 46.25
Quarter Page	4 X 5 1/4	\$ 5.50 \$ 25.00	\$ 6.50 \$ 31.25
Business card format	4 X 2 1/2	\$ 3.00 \$ 12.50	\$ 3.75 \$ 15.50

Personal messages are \$ .05/word

**All ads must be paid for in advance of publication.** Ads should be camera ready, which means typed, artwork, completed and ready to print. Gateway Gazette is good advertising for those wishing to advertise their business, shop, classes, wood, painting supplies or other services.

For more information call Ingrid Oertli at 314-843-3651 or email her at [newsletter@gatewaydecorativeartists.com](mailto:newsletter@gatewaydecorativeartists.com)



# Gateway Gazette

**Ingrid Oertli**  
Newsletter Editor  
12345 Mentz Hill Road  
St. Louis, MO 63128

## Chapter Meeting

**June 13<sup>th</sup>, 2010**  
**Sunday: 1:00 P.M.**  
**At Maryland Heights Center**  
**Door Opens at 12:00**

**Paint a patriotic butterfly pin**