



Gateway Gazette

www.gatewaydecorativeartists.com

Volume 37 Issue 4

St Louis, Missouri

Sept./Oct. 2010

What's Inside

Calendar.....2
President's Message.....3
Vice President.....4
Charity Corner.....5
Membership Chair.....8
Secretary's Report.....9
Program Chair.....12
Checklist.....17
Membership Forms.....18

Chapter Meeting

Sunday September 12th, 2010
Maryland Heights Community Center at 1 pm.

Location

All Chapter Meetings are held at the Maryland Heights Center
2344 McKelvey Road
Maryland Heights MO
314.343.1919



Refreshment Committee

Galvanettes

- Vada Galvan
- Jean Lideman
- Judy Mayo
- Sharon Hall
- Cindy Rupp
- Jeanette Bishop
- Judy Sloan
- Mary Jo Kumer



National Society of Decorative Painters
www.decorativepainters.org



Directions from I-270

Dorsett Rd. west
McKelvey Rd. right
Ameling Rd. right
McKelvey Rd. left

September Paint in
With Lorrie Reece

Halloween Pin



Mark Your Calendars



2010 Scheduled Events

Sept. 12 th	Chapter Meeting	Maryland Heights
Sept. 14 th	MB Paint In	Lindell Bank
Sept. 25 th	Sharing Workshop with Gloria Falk	Quality Testing Classroom
Oct. 5 th	MB Paint In	Lindell Bank
Oct. 29 th , 30 th & 31 st .	Retreat	Trout Lodge
Nov. 14 th	Chapter Meeting	Maryland Heights
Dec. 5 th	Christmas Party	Andre's
Dec. 7 th	MB Paint In	Lindell Bank

President

Gloria Falk 636 561 6623
president@gatewaydecorativeartists.com

Vice President

James Lair 618 258 9905
vicepresident@gatewaydecorativeartists.com

Program Chairman

Lorie Reece 314 971 0190
program@gatewaydecorativeartists.com

Membership Secretary and Publicity

Jo Lynne Lair 618 258 9905
membership@gatewaydecorativeartists.com

Recording Secretary

Jean Rogenhofer 314 739 3493
secretary@gatewaydecorativeartists.com

Treasurer

Donna Wessel 314 428 8226
treasurer@gatewaydecorativeartists.com

Newsletter Editor

Ingrid Oertli 314 843 3651
newsletter@gatewaydecorativeartists.com

Parliamentarian

Sandra Reynolds 314 303 3434
artistic55@hotmail.com

Area Representatives

South County

Joan Love 314 842 7288

Illinois

Lida Gillham 618 656 9294

North County

Judy Sloan 314 869 6942

West County

Maureen Wasserman 636 227 2843

If you have anything to pass on to the Chapter, such as news of an illnesses, congratulations, etc. contact an area rep or your Membership Chairman, Jo Lynne Lair.

Standing Committee Chairs 2010

Nominating Committee	Cheryll Wilburn
Refreshments	Jean Ellison
Gold Brush Award	Vada Galvan
Librarian	Barb Ogden
Historian	Marilyn Hartnett

Special Committee Chairs

Christmas Party	Lorie Reece
Memory Box and Charity	Gloria Falk
	Mary Jo Kumer
Webmaster	Josée Laferriere

GDA Christmas Party Reservation

December 4th 2010 12:30 a.m. to 3:00 p.m. Cost \$19.00

At Andre's 4154 Telegraph Road, St. Louis, MO

Name: _____ Phone _____

Guest Name _____

Check no _____ Amount: _____ -

Make Check payable to: Gateway Decorative Artists

Special Dietary Needs _____

Reservation due by November 14th meeting



News from your President.....

I certainly hope everyone has been able to stay cool. Have we had a HOT summer or what? I am ready for the cool air of Fall. I am not ready for winter yet....but the thought of the cool breeze would be nice.

We had a great learning experience with Gold Medalist Rosemaler, Joann MacVey. What an easy teacher to take a class with. As usual, we had another great turn-out for Janelle Johnson's seminar. She is a wonderful teacher and the work I have seen so far is wonderful. Great job Lorie, for setting these seminars up for us. The opportunities you have given us to learn new things is super. Don't you girls agree? Let Lorie know. It never hurts to hear a compliment on a job well done. She works hard at it....as do the other board members at their jobs. We do it ...FOR YOU to enjoy.

We have an opportunity to take part in what is being called "Project Rudolph 2010". The lady that was instrumental in the "Paint for Freedom" cards has been involved in collecting various sundry items, etc. for Christmas gift bags for our soldiers overseas. Elsewhere in this newsletter you will see a list of things they can use for these packages. Not one of these items is any more important than the other. Over 8000 bags are expected to be put together this year. That is a big undertaking – but I am sure with other Chapters help they will meet their goal. We are asking that you bring something – it can be one thing or several things. With an average of 45 members at a meeting – we should be able to have a nice package to send. Some of you are very good at letter writing; some of you may have children or grandchildren that could fulfill that part of the list. Please take time to look it over and if you have any questions, please feel free to give me a call or email me at arttouch@aol.com. We only have the September meeting to collect these items. They need to get the packages ready to mail out in October.

Another opportunity for us is to have a display / reception next year at the Maryland Heights Community Centre where we meet – possibly Sept/Oct. I would like to hear from those of you that would be interested in displaying a painted item. It would be on display for 5-6 weeks and it could be sold if you would choose to do that. We were thinking of possibly having a "Learn to Paint" project for those that would attend the opening reception. We would need some inexpensive surface for this project – any ideas? Do you know someone that would donate something for this? Would you be willing to work during that time? This might entail working with those painting, talking about the artwork/artist or passing on information about SDP and GDA. Along with the reception we may want to serve cookies and punch – would you like to bake cookies for the event? Think about it all, fill out the form included in this newsletter and see me at the meeting.

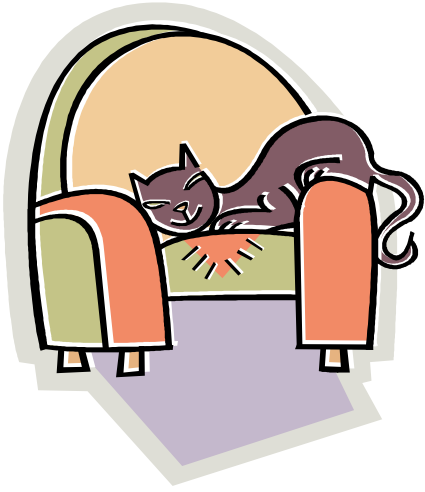
SDP business members are offering a wonderful incentive for people to join. See this information elsewhere in this newsletter. We all can help with this effort...talk to your students, friends about joining this international organization; they have so much to offer. Without SDP we would not have become recognized as a viable art form. Let's all do our part to help SDP grow. It is within our interest to do so.

On another note: Joann's Fabrics carry the paper maché boxes. They will honor Michaels and Hobby Lobby coupons/ads. At our new store in St. Peters, we were told and allowed to use one of each of the coupons during the same visit. With those 50% off coupons, you can get the paper maché boxes for the Memory Box Program almost as reasonable as we do when we order them wholesale. If you don't have time to paint a box maybe you would like to buy a box and donate it for someone else to paint. This too, would be much appreciated.

Remember, working together as a group, we can make good things happen.

I hope you're all staying well and painting as much as you have time for. God Bless. See you in September.

Gloria



From the V.P. Easy Chair

Hopefully the "dog days" of summer are behind us and we are looking forward to cooler weather and fall.

Retreat is just 2 short months away!! If you haven't signed up and want to attend you need to contact Trout Lodge and check for room availability first and then call me to see if the classes you want are available. If so, then get your registration in! Some classes have filled and all the teachers are ordering their surfaces.

Be sure to get your Halloween costumes ready for a "frightfully" good time. If you have a favorite board game, bring it with you for "game night" later.

We are waiting to hear if the "Haunted Hayride" will be available on Saturday night, so you might want to bring appropriate clothing for that too. Be prepared to put on a few pounds at the wonderful buffet they provide. And don't forget your camera for those memorable shots.

The Trade Show will be a good one this year. Bill "wood man" Chiles is returning and we have a new shop that will be bringing their wares and a lot of paint on sale. Don't forget your checkbook!

Memory boxes have been going well this year. There are only a few paint ins left for the year. Don't miss it. - They are fun and WOW !.....you get a free class, free pattern, free photo, and free paint !! What a deal! We hope to see you at the next one.

Jim Lair, VP

Charity Corner

Turning Point

Emergency Shelter gives assistance to those suffering from domestic violence and sexual assault. They offer crisis advocacy and peer counseling, assist victims in obtaining an Order of Protection from the abuser, and dealing with the Criminal Justice System. They help women gain access to available legal services, social service agencies, and programs that provide other types of needed help. Turning Point serves Franklin, Gasconade, Lincoln, Montgomery and Warren counties. Their location is confidential.

Wish List They can really use the following:

- Toilet Paper
- Dish Detergent
- Deodorant
- Hair brushes
- Hand lotions

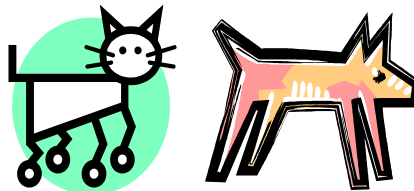


BOOKS - BOOKS - BOOKS

The USO can still use books. They **MUST** be paperback (no hardback).

Please remember when filling out the donation log book.....even if the book is new you have to claim used price (\$1.50 - \$2.00).

We thank you very much for your support.



Riverbend Humane Society

The hot summer months have been hard for our furry friends. The electric bills are very high, trying to keep them cool.

They now have 2 baby pygmy goats - a boy and a girl - that were being abused.

Their needs right now are:

- Electric fans
- Dry dog food
- Dry cat food
- Cat litter
- Food and water dishes
- Bleach (for cleaning and disinfecting)

Anything else you wish to donate will be greatly appreciated. Don't forget the resale shop - they can always use those cast aways.

Dear Members,

We will be getting a box together for this project, so please bring anything you would like to include. It can be something as simple as a decorated brown paper lunch bag or any one of the items listed below. This needs to be collected at the September meeting in order for the project manager of this program to get it all boxed up to mail off by the end of October.

Project Rudolph



Each bag to include:

- Hand decorated brown lunch bags
- 2 handwritten letters from children/youth
- 1 hand written letter from an adult
- 1 non-breakable, preferably flat Christmas Ornament with “Project Rudolph 2010” on the back.
- A Christmas Poem
- Some American candy
- Some German candy

Letters CANNOT:

- Be dated
- ask any questions about war, injuries, killing, etc.
- Be politically motivated or mention politicians or political affiliation.
- Be typewritten or photocopy
- Be in a sealed envelope

Letters CAN:

- Express support and appreciation
- Include a drawing (from a child)
- Tell about the writer’s family, life, likes, etc.
- Share personal experiences that motivate
- Include a return address

Memory Box Program

A Thank You received by Gloria Falk...

On behalf of the patients of the University of Virginia Children's Hospital, please accept our most sincere thanks for your donation of the handcrafted memory boxes for our pediatric bereavement program. I cannot tell you how special your gifts are to the families who receive these lovely treasures.

I am sorry for our delayed gratitude, however; please know we greatly appreciate this incredible and generous community service project. It is so wonderful to have your support. Your involvement is instrumental and so helpful for the families to honor their children who have passed away.

With the help of the nursing staff and social workers, the memory boxes are given to the families whose children were in the Neo Natal Intensive Care Unit (NICU), the Pediatric Intensive Care Unit (PICU), the Women's Place, and the general pediatric acute unit.

Through your tireless efforts to create these lovely keepsakes, your support has brought some comfort to the parents who are going through such a stressful and painful time. The loss of a child is phenomenal and having a way to preserve the memories by keeping a footprint, a lock of hair, or special toy is so valuable.

Please share with all those who have been involved in this effort how much the families appreciate everyone's generosity and thoughtfulness.

We are grateful for your compassion and community spirit in supporting the children and their families at the University of Virginia Children's Hospital!

Sincerely,
Kimberly A. Garo
Volunteer Coordinator
UVA Children's
Hospital



September 14th Memory Box is on the left. October 5th Memory Box is on the right. All Paint Ins for the Memory Box Program are at the Lindell Bank in St. Peters from 9 am. to 3 pm.





News from your Membership Chairman

Welcome to new members!!!!

Wanda Webb
14873 State Rte. EE
Ste. Genevieve, MO 62670
ph: 573-483-9939 BD: 2-22
No email

Bonnie Heggemann
7010 Deerpath Drive
St. Louis, MO 63123
ph: 314-752-5810 BD: 6-23
Email: bonnieheggemann@yahoo.com

Please look for them at the next meeting and introduce yourself. Be sure to add their information to your directory.

Bring a friend to the September meeting so they can experience the fun and stay for our paint-in.

Jo Lynne Lair, Membership Chairman



To all in need, our thoughts and prayers are with you during this difficult time

Those in need of healing prayers include Joyce Miller and Lee Zimmer recuperating from surgery, Jean Lindsey's daughter who has been ill, Joanne Goers whose husband passed away, the family of Joyce Miller whose nephew passed away, and friends and family of former member Toni Walker who passed away.

Please remember our member Martha White and her family in your thoughts and prayers as her young grandson battles cancer. The treatments have been very hard on him.

New Additions: Janie Parisi's new grandson July 16th and Jean Rogenhofer's new grandson August 17th.

GATEWAY DECORATIVE ARTISTS

Meeting Minutes of June 13, 2010

Gloria started the meeting at 1:05 p.m. All board members were in attendance. Ginger German gave the invocation. Gloria welcomed all members and guests.

Gloria asked if there were any corrections to the April minutes, as printed in the Newsletter. Hearing no corrections, the minutes will stand as printed.

Gloria asked if there were any questions regarding the Treasurer's Report, as printed in the Newsletter. Hearing no questions, the Treasurer's Report will be filed.

The Gold Brush Award Committee is in need of several volunteers from the chapter's membership. See Gloria after the meeting if you are interested.

The Paint for Freedom cards were on display at the Wichita Conference and it was an awesome sight to see how many cards had been painted. Gloria is still waiting to hear from the USO on the two cards that the chapter has left.

Kay Vuichard and Donna Wessel attended the Chapter's Gathering this year.

Kay gave a report on "Increasing Membership and Attendance". Then Donna reported on "How to get members involved in the chapter". Donna also participated in the exchange of trinkets at the Gathering and showed a display of the various items she received.

Donna Wessel, Cheryll Wilburn and Jacqui Fowler worked our table at the Chapter's Marketplace in Wichita. They said lots of people attended this event. We only collected \$106.00 on raffle tickets for the Maureen McNaughton pieces. Sales on the painted pins totaled \$348.00 To date, however, after member purchases, pin sales total \$431.34.

Jim Lair gave a report on Retreat. Retreat Booklets are now available for those people who ordered them. They are also available on line. Barb Ogden offered to print copies off for anyone who does not have the internet for 7 cents per page, to cover her cost. Jim mentioned that a stamped, self-addressed envelope should be submitted with your registration form. The deadline for room reservations at Trout Lodge is June 30th. The Retreat reservations should be in by August 15th. Retreat dates are October 29th, 30th and 31st.

The projects submitted for "make-it-take-its" are on display today and should be voted on after the meeting.

Mary Jo Kumer gave a report on Memory Boxes. The June MB paint-in was a bunny and flowers, taught by Marilyn McDonald. The next paint-in will be July 6th and Barb Ogden will be teaching flowers and a butterfly. Ginger German will be teaching a Rocking Horse at the August paint-in. We are still looking for someone to teach in September.

Kay Vuichard will be teaching a Snail in October. We will not have a paint-in in November, but in December, Gloria will teach a floral. To date, we have mailed or delivered 272 boxes. We have boxes available to those wishing to take home and paint.

The Maryland Heights Center has openings next year for our chapter to display artwork during a six -week period. Gloria is still checking this out and will have more details at the next meeting.

Lorie Reece told about the “Opportunities of Ownership” chances available. She has sheets available for members to try to sell chances on these. The sheets have colored pictures of Maureen’s pieces.

Vada Galvan will be teaching a butterfly pin after today’s meeting. The cost is \$3.00.

Joanne MacVey’s stroke work seminar is scheduled for June 26th, 27th and 28th. It will be held at Gloria’s studio. Lorie has the supply list for those taking this seminar.

Janelle Johnson’s Seminar is July 30th, 31st and August 1st. This seminar will be held at Wingate Inn and all classes have been filled. We have 26 in each class. Lorie has the paper available for Janelle’s seminar. Checks for the paper should be made out to Janelle Johnson, not Gateway.

Gloria Falk’s Workshop is scheduled for Saturday, September 25th. The cost for the Workshop is \$15.00 for the day. The project cost will be about \$20.00. The project is on display at the sign-up table.

Those people taking Janelle’s two-day project will need to do homework before the class. Please refer to your instruction sheets. Also, the papers for both classes should be mounted to sturdy cardboard or board. A clip board could probably be used for the bird picture.

Lorie said to let her know if you need any of the colored pencils. She will be glad to pick them up for you.

Lorie and Mary Jo showed the projects brought in for Show and Tell. Barb Ogden had a display of projects she will be teaching at the Kirkwood Shop. Jo Lair had paintings on display for the Mary Carole Seminar on Labor Day Week-end.

Jo Lair reported that we have 72 current members. We have 46 members present today. The basket centerpieces were won by: Donna Wessel, Margaret Von Kaenel, Sue Struckhoff, Debbie Finklang, Mary Jo Kumer, Vada Galvan, Jean Rogenhofer, Martha White, Elizabeth McClintock, Kay Vuichard, Liz Geers, Ingrid Oertli, and Joyce Miller. The cloths in the baskets were embroidered by Delia Larkins. Linda Nelson won the Cookbook attendance prize that the Illinois chapter gave to Gateway for taking their cookbooks to sell at the Chapter’s Marketplace held at the Wichita Conference.. Bobbie Hanlon also won an attendance prize.

The Illinois chapter still has Cookbooks available for \$12.00 each.

Karen Steiner thanked everyone who took her Workshop on the Lighthouse painted on tile. She said she has patterns of other lighthouse and if anyone is interested to see her after the meeting.

Ingrid Oertli advised that the next Newsletter deadline is August 20th. She mentioned that the Maureen McNaughton Butterfly Pattern Packet that she checked out at the last meeting disappeared. She thought that maybe someone might have picked it up to look at it and it accidentally got mixed up with their supplies. She would appreciate if everyone would check through their things and return it to the chapter library if they find it.

Donna said she has books, patches and pins available at the chapter table.

Jo Lair mentioned that the oil painting for her next paint-in at the Maryland Heights Center is on display at today’s meeting.

Cheryll Wilburn reminded everyone that we are in need of nominations for officers to be elected at the November meeting.

Jean Ellison thanked this month's refreshment committee for all the good food today. She asked if someone at each table could fold up the tablecloths after the meeting. That would be a big help. The Galvanettes will provide the refreshments for the September meeting.

Gloria announced that Sandra Reynolds has just opened up a new studio in Columbia, Illinois, and asked Sandra to tell us about it. Sandra talked about her studio and classes. She invited everyone to visit her studio and upcoming open house.

With no further business, Mary Jo Kumer made a motion to adjourn and this was seconded by Judy Sloan. The meeting adjourned at 2:20 p.m.

Respectfully submitted,

Jean Rogenhofer
Recording Secretary



NEW MEMBER opportunities with SDP!

SDP Business Members Deco-Art and Royal-Langnickel have generously offered to give a **Decorative Painting for Everyone** New Member kit to every new SDP Member.

The FREE Decorative Painting for Everyone kit includes:

- Set of seven Americana Acrylics and three Deco-Art mediums.
- Set of five Royal Gold Brushes and one Royal 1" sponge brush.
- Black & white carbon paper, tracing paper and an 8"x10" clear styrene sheet that can be used for practicing brushstrokes.
- "Decorative Painting for Everyone" course guidebook.
- DVD featuring artist Patricia Rawlinson teaching step-by-step instructions for all six lessons.
- 20%-off your tuition at the Traditions Online Art School. This discount applies to Tier One A and Tier Two Core of this innovative online school. See the [Traditions Online Art School](#) website for complete information about the school, including curriculum and fees.

• Just sign up for your NEW SDP membership today and you will receive a coupon in your membership packet for one kit. We look forward to welcoming you to our painting family!!

Program Chair Lorie Reece



Hi ya'll!

Heck, summer is almost over and I am not in a hurry for winter!!

Our Rosemal class with JoAnne MacVey went off without a hitch thanks to Gloria and the use of her studio and Mary Jo and her Cozy Cottage! We saved money through both of them! A GREAT BIG THANK YOU to both of them! We had 11 members at the seminar. Thanks to all that participated.

Our Pencil Seminar with Janelle Johnson was a success as always. Janelle actually stayed at an RV campsite and we saved some money! That is always nice. We had 26 members at the Friday class and 21 at the 2 day Sat-Sun class. It seems as if everyone had a good time and happy with their pieces. Each and every one of them was lovely.

I really hate to say it but Christmas is just around the corner! Please be sure to mark December 5th in your calendar for our annual Christmas Party at Andre's. Time to start thinking about those designs for the Christmas Ornament exchange! Please be sure to sign up and pay when you can. The cost is the same as last year at \$19 which includes a buffet, dessert; drinks and a good time had by all ☺ Guest are also welcome!

Our next sign up is for Carol Spohn who teaches *watercolors*. Her class will be May 14th, 15th and 16th and will be \$45 a day. I will have pieces at the meeting to vote on. Be sure to sign up to do this class. I have taken from Carol at SDP and Hoot and she is a fun teacher! Her web site is www.carolspohn.com.

Gloria's sharing seminar is Sept 25th at Quality Testing. The class will start at 10am and go until Gloria tells us to go home. We should end class around 5pm. I will send out reminders for those going.

Please let me know if you are interested in teaching a class after the Chapter meetings or if you are interested in a Sharing Workshop. Donna will be teaching the November meeting workshop. Ginger will be teaching a Sharing Workshop January 22nd or 29th, which I have requested that we design our painting bags into funkadelic bags. We need to get decorated before SDP and HOOT. Please sign up for this class as soon as you can. I am sure it will get filled up fast! Place to be determined depending on signups. Gloria will also be doing a Sharing Workshop March 12th, an acrylic Rosemaled Lazy Susan. We would love to have you teach a class. So please come see me.

Future Seminars

Carol Spohn - May 14, 15, 16th 2011

Carol has been painting since 1989 when she learned to paint on her lunch hour. She has been painting exclusively in watercolor since 2002. She is also a published artist. She works a lot with different "things" when painting. You might use a geranium leaf to make a print within the watercolor; you might use another medium with the watercolor to make a different effect. She is very creative. I have painted with her at SDP and she is a lot of fun to take from, very casual and personable. Cost will be determined on class size. Please check out her website at www.carolspohn.com.

Annette Long- July 16th, 17th and 18th, 2011

Annette has been painting since the 1980's and started her own business in 1997. She is a published teacher and has been to Japan for the Artist of the World Exhibition. She works with Wood and Porcelain. Her pieces are beautiful. Cost will be determined on class size. Please visit her website at www.annettelong.com.

Mark Polomchak-November 2012

Water color, dates to be determined. Please visit his website at <http://www.palomchak.com/>

Check the website: www.gatewaydecorativeartists.com for registration forms.



GATEWAY DECORATIVE ARTISTS OF ST. LOUIS, MISSOURI

Own your own Maureen McNaughton
Opportunities of Ownership

Will be held on November 14, 2010

1 for \$1.00 or 6 for \$5.00

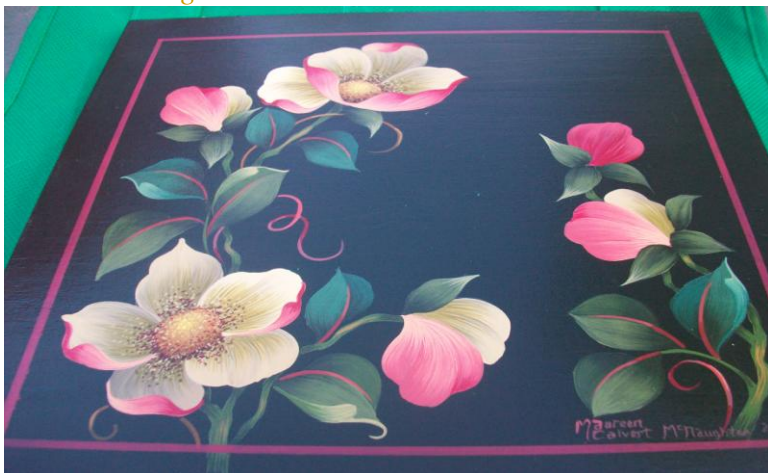
First Drawing



Second Drawing



Third Drawing



Members: Please show this to family and friends and try to sell some tickets on these.



The Gold Brush Award

The Gold Brush Award is the highest honor bestowed upon a Chapter member. It is given to acknowledge outstanding contributions to the Chapter as well as dedication to the art of Decorative Painting.

It is given to a member who sets an example for all of us, one whose dedication is above the norm. She promotes the interest of the Chapter and stimulates interest in Decorative Painting both at Chapter functions and outside of Chapter activities. She gives unselfishly and without a thought of personal gain. Her contributions need not have been made just in the past year, but are of a long-standing nature.

The Gold Brush Award is given to only one member annually (not necessarily every year) and is a once in a lifetime honor. The award is presented at the December Christmas Party meeting without prior announcement of the recipient.

To nominate someone for this high honor, fill out the form below. The Committee will research your nominee's qualifications based on information you and others give us. If you know of a specific service your nominee has performed, please state it briefly. If more information is needed a Committee will contact you.

Please be conscientious in your choice and remember that this is not a popularity contest. A nomination box will be set up at the September and November meeting with extra forms available. **Please place your signed form into a sealed envelope and either drop in the *Gold Brush Award* box or mail to:**

Vada Galvan
9 Willow Ct.
Farmington, MO 63640

Form must be signed to validate nomination

Each chapter member is allowed to nominate only one candidate, which will be kept confidential.

My nominee for the *Gold Brush Award* in 2010 is:

Reason: (state briefly—specific Chapter and/or community service)

Signature _____ Phone No: _____

We Need You.....

It is that time of year to once again ask members to run for office.

Vice-President, Membership Chairman, Recording Secretary and Treasurer will be elected for a two year term.

If you're interested in running and aren't exactly sure what the job entails call the person holding that position this year. I am sure any questions that you may have, they would be happy to answer. The only requirement is being a member for 2 years (2009 & 2010) and having attended at least 5 meetings during that time... (this September and November meeting would count towards the 5 meeting requirement).

Please fill out the form below and return to me at the meeting in September or you can email me at: cwpainter@aol.com

Thank you for your consideration. Cheryll Wilburn, Nominating Comm. Chair

GATEWAY DECORATIVE ARTIST Official Request for 2011 Officers

All nominees must have been a member for not less than 2 years immediately preceding the time of election and have attended 5 meetings. Please place a mark to indicate:

. Not eligible, Not interested at this time, Interested, I would like to be called.

Signature _____

Print _____

Interested members please provide best contact times and phone numbers.

Day _____ Time _____ Phone Number _____

Day _____ Time _____ Phone Number _____

All offices will be voted on in November.

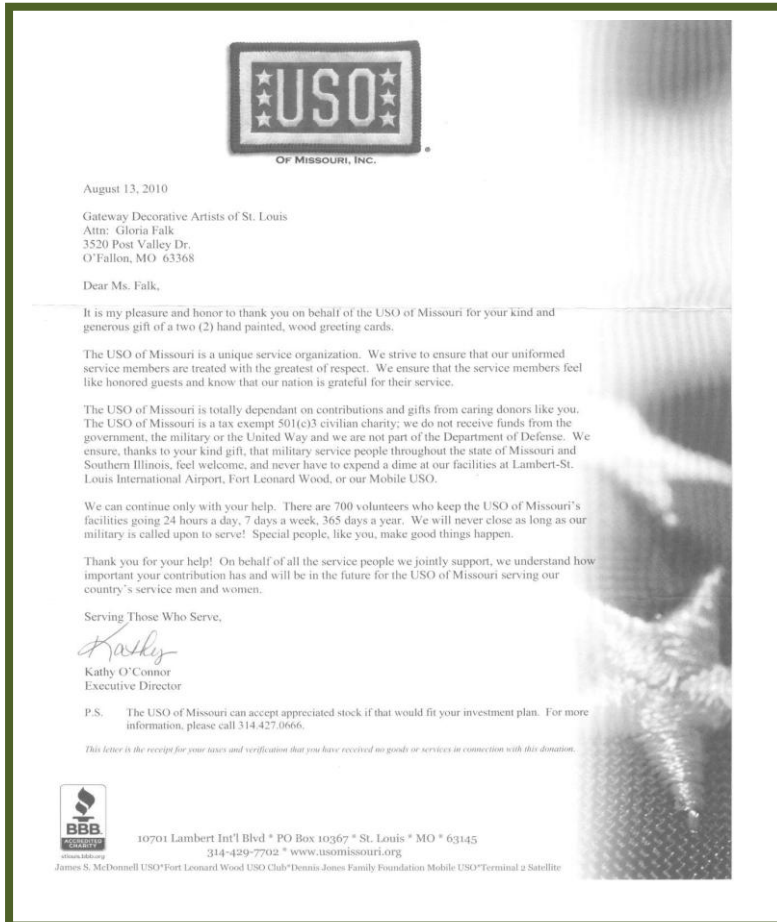
The Vice-President, Membership Chair, Recording Secretary and Treasurer will be a 2 year term.

Please send or give this form to Cheryll Wilburn, Nominating Committee Chair, 410 English Manor Drive, Wentzville, MO 63385

Absentee Ballots

If you find you will not be able to attend the Nov. meeting and you would like to exercise your right to vote, please send a request for a ballot **and** a self addressed stamped envelope to me postmarked by October 22. Thank you, Cheryll Wilburn.

There is a NEW internet magazine out called "Interactive Artist". There are interactive classes, video and written lessons, informative articles along with many other features. I subscribed recently and really enjoy it. Go see for yourself at: www.interactiveartistmagazine.org. If you decide you would like to subscribe – there is a promo code you can use as members of Gateway: GDP2010 and you will receive a 1 yr. subscription for only \$19.99.



Recent Thank You letters to GDA from the USO and SDP.

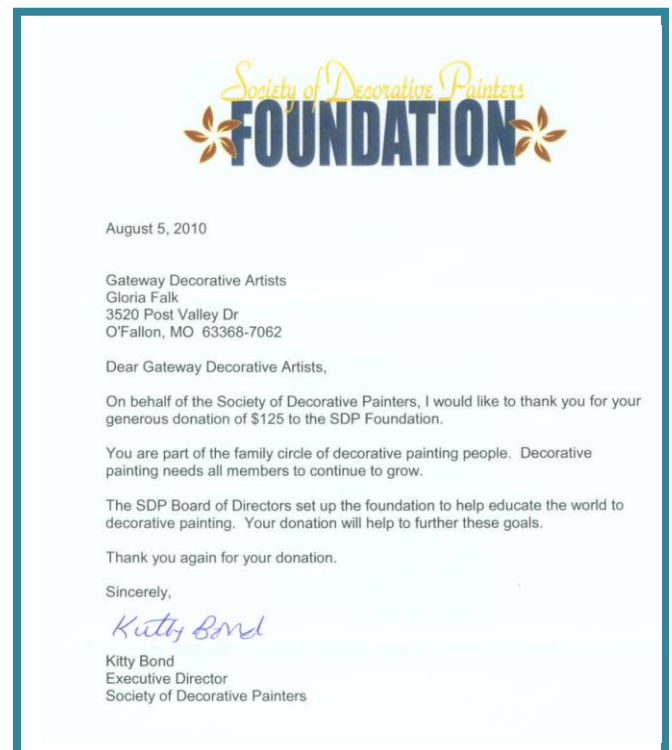


Other Seminars

Mary Carole Labor Day Seminar. Contact Jo Lair for details. See previous newsletter for project pictures.

Ginger Edwards Seminar, Sept. 17th, 18th and 19th.

Openings are still available. Contact Dixie Reeb for details. See the Lincoln Trails newsletter for project pictures.





Next Newsletter Information Deadline
October 22nd, 2010

Checklist for September 12th Meeting

- ❖ Bring show and tell projects
- ❖ Memory Boxes—painted, varnished, ready to ship
- ❖ Books and snacks for USO
- ❖ Donations for Turning Point
- ❖ Donations for Riverbend Animal Shelter
- ❖ Bring your usual painting supplies
- ❖ **Bring a Friend**

September

13 Linda Rocklage
20 Jeanette Bishop
20 Josée Laferriere
21 Lorie Reece
22 Maureen Wasserman
25 Jean Wideman
30 Liz Geers
30 Kathy Otto

October

4 Ginger German

November

6 Nancy Falk
12 Barb Ogden
13 Mary Jo Kumer
17 Deb Finklang
24 Virginia Hauser



Former *Gold Brush Award* Recipients

1987 Joycelynn Smutz
1988 Judi Krause
1989 Bonnie Stout
1990 Gerry Klein
1991 Bobbie Gray
1992 Arlene Siebert
1993 Barb Ogden
1994 Carolyn Bacon
1995 Jeanne Abraham
1996 Annette Dozier
1997 Gloria Falk
1998 Jan Rosenburg
1999 Mary Jane Jett
2000 Ellen Rohne
2001 Ruth Ann Thompson
2002 Toni Dosser
2003 Debbie Christensen
2004 Laura Heathcote
2005 Mary McDevitt
2007 Mary Jo Kumer
2008 Jean Rogenhofer
2009 Vada Galvan

Your National Dues go directly to SDP

Name _____ Membership # (if renewal) _____
Household Member Name _____ Membership # (if renewal) _____
Business Name (if joining as a Business Member) _____
Mailing Address _____
City _____ State _____ Postal Code _____ Country _____
Email _____ Website _____
Phone (_____) _____ Fax (_____) _____

I am a member of at least one SDP Chapter and I wish to receive SDP e-mail chapter communication.

2. Membership Categories (Check one, please)

U.S.

\$40 Individual (\$45 after Dec. 1)

\$70 Business (\$75 after Dec. 1)

3. Business & Teacher Directory Resource Categories (optional)

Business members, Check all boxes that apply for the Business & Teacher Directory. Listings are FREE with your business membership.

<input type="checkbox"/> Author	<input type="checkbox"/> Retailer
<input type="checkbox"/> Distributor/Wholesaler	<input type="checkbox"/> Teacher
<input type="checkbox"/> Home Studio	<input type="checkbox"/> Travel Teacher
<input type="checkbox"/> Manufacturer/Importer	<input type="checkbox"/> Other
<input type="checkbox"/> Publisher	



4. Payment

Make checks payable to: SDP, 393 N. McLean Blvd., Wichita, KS 67203-5968. For faster service, use MasterCard or VISA and call (316)269-9300 ext. 105 or fax application to: (316)269-9191 Join online at www.decorativepainters.org

VISA MasterCard Exp. Date _____ Phone _____

Card Number _____ Signature _____

YES! This is a Gift Membership from _____ Membership # _____

DUES POSTMARKED AFTER DEC. 1, REQUIRE AN ADDITIONAL \$5 POSTAGE/HANDLING FEE (DOES NOT APPLY TO NEW MEMBERS)

Membership in this Chapter is open only to persons who are dues-paying members to the SDP



2011 Gateway Decorative Artists Membership form

Name _____ New Member Renewal
Last First Spouse

Address _____

City _____ State _____ Zip code _____

Phone Number _____ Email _____

Birth Date : Month ___ Day ___ SDP Membership # _____ (include a copy of SDP card)
Member of other chapters: _____

Check all that apply:

Individual Member Teacher Business Member Name of shop: _____

Certification: MDA CDA TDA

Preferred Painting Medium: Oil _____ Acrylic _____ Watercolor _____ Other: _____

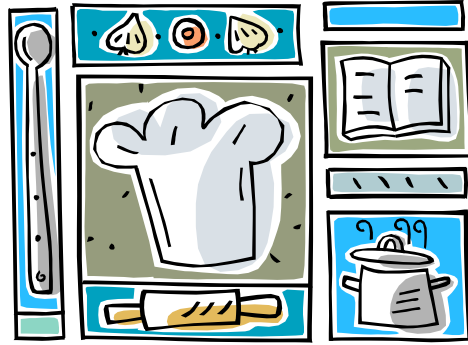
What year did you start painting? _____

Favorite Artists: _____

Annual dues are \$20, payable by Dec 31, 2010. Please make check payable to: **Gateway Decorative Artists**

Mail to: **Jo Lynne Lair, 106 Cooper Ave., East Alton, IL 62024**

GDA Gourmet



Diabetic Applesauce Raisin Cake

½ cup melted butter or oleo	1 tsp. cinnamon
Sugar substitute to equal 1 cup	1 tsp. nutmeg
2 eggs, beaten	2 tsp. baking soda
2 cups unsweetened applesauce	1 cup raisins
3 Tbsp. (2 squares) unsweetened Chocolate, melted	1 cup chopped walnuts
2 cups flour	

Melt butter or oleo. Combine sugar substitute and eggs. Stir in applesauce and chocolate.

Sift together dry ingredients. Stir in batter. Fold in nuts and raisins. Bake in ungreased Bundt pan at 350 degrees for 45 minutes or until tests done. Cool.

Per serving: 175 calories. Exchanges: 1 slice = 1 bread, ½ fruit, and 2 fat exchanges

Betty McKinnon

Punch Bowl Cake

1 box white cake mix (bake in 2 round layers)
1 large can crushed pineapple in juice
2 small instant vanilla pudding
1-10 oz. frozen strawberries (thawed)
2 bananas
1 large Cool Whip
(nuts or cherries optional)

Put one layer cake in punch bowl. Prick holes with fork. Cover with half crushed pineapple and juice.

Add ½ banana. Cover with one package vanilla pudding made according to instructions. Add ½ the strawberries. Top with second layer cake and repeat all layers. Frost with Cool Whip.

Lois Vazzi

Jean Hoffman's Potato Salad

Hi Ingrid,

I was asked to send my potato salad recipe to you, so here it is. (This is the way I normally make it --- I doubled this for the meeting today.) The recipe is very simple. I apologize for the fact that many of the potatoes seemed WAY too soft --- I used Yukon Gold this time and will go back to my old standby red-skinned potatoes in the future. I always make it a point to have more than one jar of Marzetti's on hand because sometimes the potatoes seem to soak it up and the salad gets too dry.

5 pounds potatoes, boiled, cooled, peeled and sliced
1 dozen hardboiled eggs
1 or 2 onions, chopped
1+ bottle Marzetti's Original Slaw Dressing
Approximately half a pound of bacon, cut up and fried crisp, to sprinkle on top just before serving
Salt to taste

Maryland Heights Exhibit

2011 date yet to be determined

Name _____ Phone number _____

I would like to display a piece at this exhibit [] What _____ Size _____

I can help with setting up the display prior to reception []

I am available to help during the reception []

I am willing to bake cookies [] _____dozen

I can provide surfaces for a Learn to Paint during the reception [] What _____

I can help with taking down the display []

Note: Any piece for display would have to be able to be hung. It is my understanding that the reception will be held ONE day for a couple of hours or so. The display will be up for 5-6 weeks. This would be a good opportunity for teachers to hand out their business cards and advertise their classes or their availability for seminars, etc. If you display, you will be expected to work.

Please return this form to: Gloria Falk

.....

Join Gloria for a Sharing Workshop. It will be held on Sept. 25 from 10 - 5 at Quality Testing by Carol House Furniture. The cost of the project will be around \$20. Gloria is in the process of getting price quote now. You do not have to do the design on this wood piece....if you have something else you would prefer to do it on - that is fine. You just need to let them know when you sign up. The design is an original of Elizabeth Hayes. She gave her permission to teach it.



Great advertising opportunities

Ad	Size	Members		Non-Members	
		issue	year	issue	year
Full Page	8 1/4 X 10 3/4	\$ 10.50	\$ 50.00	\$ 13.25	\$ 62.50
Half Page	8 1/4 X 5 1/4	\$ 8.00	\$ 37.00	\$ 10.00	\$ 46.25
Quarter Page	4 X 5 1/4	\$ 5.50	\$ 25.00	\$ 6.50	\$ 31.25
Business card format	4 X 2 1/2	\$ 3.00	\$ 12.50	\$ 3.75	\$ 15.50

Personal messages are \$.05/word

All ads must be paid for in advance of publication. Ads should be camera ready, which means typed, artwork, completed and ready to print. Gateway Gazette is good advertising for those wishing to advertise their business, shop, classes, wood, painting supplies or other services.

For more information call Ingrid Oertli at 314-843-3651 or email her at newsletter@gatewaydecorativeartists.com



Ingrid Oertli
Newsletter Editor
12345 Mentz Hill Road
St. Louis, MO 63128

Gateway Gazette

Chapter Meeting

September 12th, 2010
Sunday: 1:00 P.M.
At Maryland Heights Center
Door Opens at 12:00

Paint a Halloween Pin