



Gateway Gazette

www.gatewaydecorativeartists.com

Volume 38 Issue 3

St. Louis, Missouri

June/July 2011

What's In Side

Calendar.....	2
President's Message.....	3
Vice President.....	4
Charity Corner.....	5
Membership Chair.....	6
Program Chair	7
Secretary Report.....	8
Checklist.....	16
Membership Forms.....	20

Chapter Meeting

Sunday June 12th, 2011
Maryland Heights Community Center
1 pm.

Location

All Chapter Meetings are held at the Maryland Heights Center
2344 McKelvey Road
Maryland Heights MO
314.343.1919

Directions from I-270

Dorsett Rd. west
McKelvey Rd. right
Ameling Rd. right
McKelvey Rd. left



Refreshment Committee

- Vada Galvan
- Judy Mayo
- Laura Mayo
- Judy Sloan
- Elizabeth McClintock
- Wanda Webb
- Mary Jo Kumer



National Society of
Decorative Painters
www.decorativepainters.org



*After Meeting Paint in Project with
Sandra Reynolds cost \$2*

Mark Your Calendars



President

Gloria Falk 636 561 6623
 president@gatewaydecorativeartists.com

Vice President

James Lair 618 258 9905
 vicepresident@gatewaydecorativeartists.com

Program Chairman

Lorie Reece 314 971 0190
 program@gatewaydecorativeartists.com

Membership Secretary and Publicity

Jo Lynne Lair 618 258 9905
 membership@gatewaydecorativeartists.com

Recording Secretary

Jean Rogenhofer 314 739 3493
 secretary@gatewaydecorativeartists.com

Treasurer

Donna Wessel 314 428 8226
 treasurer@gatewaydecorativeartists.com

Newsletter Editor

Ingrid Oertli 314 843 3651
 newsletter@gatewaydecorativeartists.com

Parliamentarian

Sandra Reynolds 618-939-8021
 oilsbysandra@gmail.com

Area Representatives

South County

Joan Love 314 842 7288

Illinois

Lida Gillham 618 656 9294

North County

Judy Sloan 314 869 6942

West County

Maureen Wasserman 636 227 2843

If you have anything to pass on to the Chapter, such as news of an illness, congratulations, etc. contact an area rep or your Membership Chairman, Jo Lynne Lair.

Standing Committee Chairs 2011

Nominating Committee	Cheryll Wilburn
Refreshments	Jean Ellison
Gold Brush Award	Lori Reece
Librarian	Barb Ogden
Historian	Marilyn Hartnett
Ways and Means	Nancy Falk

Special Committee Chairs

Christmas Party	Lorie Reece
Memory Box and Charity	Gloria Falk
	Mary Jo Kumer
Webmaster	Josée Laferriere

2011 Schedule

June 7 th	MB Paint In	Lindell Bank
June 12 th	Chapter Mtg.	Maryland Heights
June 17 th , 18 th , 19 th	Carol Spohn	Wingate Hotel
July 12 th	MB Paint In	Lindell Bank
July 16 th , 17 th , 18 th	Annette Long	Wingate Hotel
Aug. 2 nd	MB Paint In	Lindell Bank
Aug. 8 th -13 th	HOOT conv.	Columbus, OH
Sept. 13 th	MB Paint In	Lindell Bank
Sept. 25 th	Chapter Mtg.	Maryland Heights
Sept. 30 th , Oct 1 st and 2 nd	Retreat	Trout Lodge
Oct. 4 th	MB Paint In	Lindell Bank
Oct 9 th	Art Reception	Maryland Heights
Nov. 13 th	Chapter Mtg.	Maryland Heights
Dec. 4 th	Christmas Party	Andre's
Dec. 6 th	MB Paint In	Lindell Bank

News from our President.....

I am writing this as I prepare to go to our Society's biggest event of the year.....

The 39th Annual National Conference of Decorative Painters in Wichita, KS.

We have planned to attend lots of classes. There are 7 of us traveling together and we are pulling a covered trailer - doesn't that sound like fun!! ☺

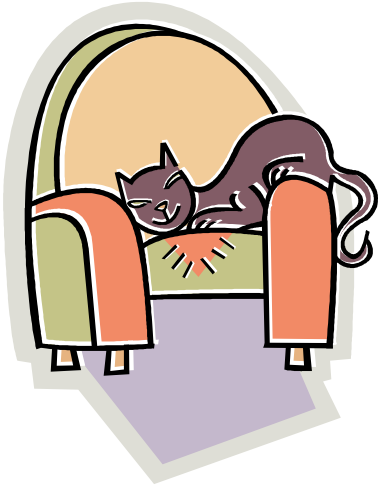
The gals did a terrific job getting lots of boxes done at the last MB paint-in. Several brought boxes in that they had finished at home and in a couple of days we mailed out 32 boxes. Tolefriends is once again covering the shipping for the month of May. This has been a tremendous help to our funds for memory boxes. Speaking of which...at Gwen Gerhardt's liquidation sale, there was a cabinet sitting on the side lines, several giving it a look as they came through, but no one purchasing it. On the last day of the sale - it was still sitting there. I ended up taking it home. ☺ I talked to Ginger about it and she said she would be happy to paint something on it for us to have a fund raiser for the Memory Box Program. Elsewhere in this NL you will see a picture of the cabinet that Ginger painted, and we are going to have "Opportunities of Ownership" available on it - until November. What a great opportunity to have -or- give a beautifully painted piece from Ginger. Thank you Ginger, from the bottom of my heart, for coming through for the chapter and the Memory Box Program one more time.

Once again, they have asked Chapters to take part in the "Paint for Freedom" cards to paint for our soldiers, those that have served or are currently serving. If you would be interested in painting one of these cards, call me or see me at the meeting. The deadline to get it back to me is Sept. 1. Those of us that painted them the last time felt a great sense of pride to do this for those that are protecting or have protected our Freedom. What an honor!!

Sue Bowers (2011-2012 President of SDP) contacted me and has asked me to Chair the TDA/Education Committee for next year. I accepted! As Dr. Phil would say - "This is not my first rodeo". I have served on this committee before and I hope to plan, along with my committee members, a great time for education next year at our 40th SDP Conference. I hope you will consider coming to that conference and sharing this milestone with SDP. They are planning some very interesting things for us.

I know I have said this before but I firmly believe that Chapters are the essential element in spreading the word of our great art form; they give us the opportunity to develop friendships and link us together in our common interests. Bring a guest to the next meeting and encourage them to join our club, so they too can enjoy the wonderful learning experiences that Gateway provides. I will be looking forward to seeing you at the June meeting.

Gloria Falk, TDA
President



News from the V.P. Easy Chair

Spring has sprung - flowers are in bloom and vegetables are starting to peek out of the garden, just waiting for the warm sunshine and rain showers. This is the time of year that inspires new things and nudges your creativity into action.

Fall Retreat projects will be on display at the next meeting. Be sure to check them out and select the ones you want to paint. Retreat booklets are now online and ready to print. I already have several registrations. Good work you early birds!!

Don't forget to make your reservations at Trout Lodge. It will be another great year. Our room block is on the same floor as the classrooms - which will be just a short walk down the hall.

I want to thank everyone that submitted all those wonderful projects this year. Everything was good and it was a difficult decision for those voting. If your project wasn't selected this year, please don't get discouraged, the vote tally was very close. It is a shame we don't have the time to do them all.

I need a VERY BRIEF 5 minute meeting with all Retreat teachers following the June meeting.

I look forward to seeing you all at the June meeting.
Jim Lair, V.P.

Charity Corner



BOOKS - BOOKS - BOOKS

The USO can still use books. They MUST be paperback (no hardback).

Please remember when filling out the donation log book.....even if the book is new you have to claim used price (\$1.50 - \$2.00).

We thank you very much for your support.

TURNING POINT WOMEN'S SHELTER

Emergency Shelter gives assistance to those suffering from domestic violence and sexual assault. They offer crisis advocacy and peer counseling, assist victims in obtaining an Order of Protection from the abuser, and dealing with the Criminal Justice System. They help women gain access to available legal services, social service agencies, and programs that provide other types of needed help. Turning Point serves Franklin, Gasconade, Lincoln, Montgomery and Warren counties. Their location is confidential.

In addition to needing the general sundry items listed below the shelter will accept clean clothes and household items in good working order. In case you're cleaning out and making way for something new to add to that cupboard or closet - bring your items to the next meeting and they will be delivered to the Women's Center. Thank you for all you do for the Women and Children in desperate need of help at a low time in their life.

Wish List They can really use the following:

Toilet Paper Dish Detergent Deodorant Hair brushes Hand lotions

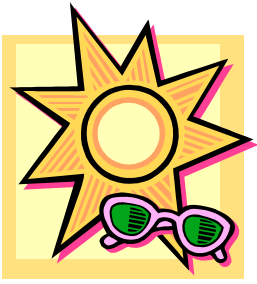
Riverbend Humane Society

The hot summer months are approaching and it will be difficult and costly to try and keep our furry friends coll and comfortable.

Their needs right now are:

- Dry dog food
- Dry cat food
- Cat litter
- Food and water dishes
- Bleach (for cleaning and disinfecting)
- Blankets and towels
- Purina Goat Chow

Anything else you wish to donate will be greatly appreciated. Don't forget the resale shop - they can always use those cast- aways.



News from your Membership Chairman.....

WELCOME!!!! New member: Barbara Stanfield
P.O. Box 957
Farmington, MO 63640
ph: 573-518-4499
B/D: 7-17
email: barbara.stanfield 42 @yahoo.com

Please add her information to your directory.

Look for Barbara at the June meeting and introduce yourself.

Change of email address for Kay Vuichard: vuichardkaylee@gmail.com

Be sure to bring a friend to the meeting. Show off our great Retreat projects and invite them to join our fall Retreat.

See you all in June!
Jo Lynne Lair,
Membership Chair



Get well wishes are sent to all in need.
Please include Jean Lindsey in your prayers as she recuperates from her surgery in April.

News from your Seminar Chair



Plan on staying after the June Chapter meeting for our paint in with Sandra Reynolds.

Bring your basic painting supplies, brushes and water bucket.

Our seminar in June is with Carol Spohn who is teaching Watercolors. She will be with us June 17, 18 and, 19, 2011. Her projects are listed on the website and each day is taught with a different technique. *In addition to the signup fee there will be a \$12 per day supply cost payable to Carol the day of the seminar.*

She will also be giving a class Thursday night and only charging for the project. We will be painting the chicken, another new technique with a pen and watercolor on Thursday night at 7PM at Wingate hotel. The cost to paint that night will be \$18. Checks will need to be payable to Carol and I will collect them that night. I will need to know the day of the meeting if you are planning on attending the Thursday night paint in. It should last approximately 2 hours.

There are still seats available for Carol's class. Come out of your safety zone and try Watercolors. Please be sure to sign up for Carol at the meeting!

Annette Long seminar is scheduled for July 16, 17, 18, 2011. The cost of the seminar is \$45 day for members and \$65 day for non-members. The classes have been chosen and will be on the website soon. I hope to have the sizes and patterns for her class at the meeting so you can have plenty of time to prep your wood. Please be sure to sign up and save your space at the meeting.

I also need someone to volunteer to do the after meeting paint-in for the September meeting. Please see me if you are interested.

Hope to see all of you at the June meeting.

Lorrie Reece,
Program Chair

GATEWAY DECORATIVE ARTISTS

Meeting Minutes of April 10, 2011

Gloria called the meeting to order at 1:05 p.m. All board members were in attendance. Ginger German gave the invocation. Gloria welcomed all members and guests and thanked everyone for coming.

Gloria asked if there were any corrections to the November minutes and December minutes as printed in the Newsletter. Hearing no corrections, the minutes will stand as printed.

Gloria asked if there were any questions regarding the Treasurer's Report. Hearing no question, the Treasurer's Report will be filed.

Gloria mentioned that brochures are available advertising the up-coming Convention in Wichita. So far, they only have about 500 registered. Fliers are also available for SDP. As a promotion, they are offering new members a special kit. There are also a few brochures available advertising the Houston Artist Expo.

Gloria asked how many members were going to the Wichita Convention and mentioned that we are in need of someone to attend the Chapter's Conference. If anyone is interested, please see Gloria after the meeting.

The board discussed sending donations again this year to SDP and the Museum of Decorative Painters. We suggested sending \$125 to SDP and \$100 to the Museum. Jo Lair made a motion that we send \$125 to SDP and \$100 to the Museum. This was seconded by Sue Struckhoff. Motion carried by a show of hands.

The Chapter Service Award Charms were presented to the various deserving members.

Paul Messmer will be having another sale on Saturday, April 30th. Fliers are on Jo's table with the information and directions.

Jim Lair gave a report on Retreat, which will be held at the YMCA Trout Lodge again this year on September 30th, October 1st and 2nd. Trout Lodge reservations should be made by June 30th. This year's theme is "Movie Madness" The rooms will cost \$5.00 more, per person, due to the time of year we will be going. The projects submitted for Retreat are on display today and ballots will be given out after the meeting for voting. We ask that only people going to retreat do the voting. Retreat Booklets will be available on-line. Anyone wanting a black & white retreat booklet should let Jim know after the meeting.

We are still supporting the USO and are accepting paperback books only. We are also still supporting Turning Point and Riverbend Animal Shelter. Riverbend recently had an Artadoptathon event to raise money for support of the shelter. Handpainted items were donated by Gloria Falk, Lorie Reese, Donna Wessel, Ginger German and Jo Lair. Next Sunday, Riverbend will be having a Chocadoptathon as another fund raiser for the animals. See their ad in our Newsletter.

Mary Jo Kumer gave a report on Memory Boxes. Donna Wessel taught the April MB paint-in and Ginger German will be teaching a bird nest at the May MB paint-in. We are still looking for someone to teach the June MB paint-in. The South County group painted 38 Memory Boxes that are displayed on the tables today.

Lorie Reece gave a report on Seminars. She advised that the seminar fee for non-members will now be \$20.00 over the cost of a member's fee. The Carol Spohn Watercolor Seminar will be June 17th, 18th and 19th. Carol will be teaching Geraniums on Friday, Ditch Flowers on Saturday and Turtles on Sunday. She has offered to do a free two or four hour class on Thursday evening. The only cost will be a supply fee of approximately \$15.00. The project for Thursday will be determined by the most votes after the meeting. Lorie will e-mail a list of brushes needed for each project. She will check with Carol to see if she will have brushes available to purchase.

Annette Long will have a Seminar on July 16th, 17th and 18th. This is on Saturday, Sunday and Monday. This will be in oils and photos of various projects are on display for voting. You can paint on the surface of your choice. The cost is \$45.00 per day and the seminar will be held at the Wingate Hotel.

We are planning a one-day Color Pencil Seminar with Tina Sue Norris on Monday, September 19th, at the Staybridge Hotel in O'Fallon. Cost will probably be \$45.00. Tina will be doing a Seminar for Artistic Friends on Friday through Sunday, September 16th, 17th and 18th at the Staybridge and has offered to stay an extra day for us.

Karen Hubbard and Mark Polomchak Seminars are planned for next year, 2012. In 2013, we are planning a Seminar with Robert Warren. Specific dates have not yet been determined.

We had a good turnout for both Ginger German's Workshop and Gloria Falk's Workshop. Lorie showed some of the projects that were done at these workshops. Lorie is looking for two or three teachers for next year's workshops. See Lorie if you are interested.

Lorie and Mary Jo showed the projects that were on display for "Show and Tell". Barb Ogden mentioned that she had projects on display for classes at the Checkered Cottage.

Barb Ogden will be teaching the paint-in after the meeting today. It is a cute little "Be Mine" Pin and the cost is \$2.00.

Ingrid Oertli made an announcement that the next newsletter deadline will be May 15th. The newsletters will be e-mailed and mailed out to those not having e-mail on the 29th of May.

Jo Lair reported that we have 45 members attending today's meeting, and 5 guests. The guests were introduced by the members who brought the guests. One guest was Jo's friend from Japan. Tickets were drawn from each table for the attendance prizes. Door prizes were donated by Gloria Falk and the winners were Vada Galvan and Kay Vuichard.

Donna Wessel said she has some books, patches and jewelry that are for sale at the Chapter Table.

The 2011 Directories are available for pick up today. The Newsletter lists some corrections that should be made in these Directories.

Kay Vuichard suggested that we do some Memory Boxes at Retreat. She offered to have a table set up for making "Cut and Paste, Decoupage Memory Boxes" - no painting. She has offered to supply all the materials and Gateway will supply the boxes. These can be done anytime someone has some free time at Retreat, or after the Banquet on Saturday evening.

Jean Ellison thanked today's Refreshment Committee for all the good food. Those on that committee were: Ginger German, Marilyn McDonald, Ann Mohrman, Linda Nelson, Karen Steiner, Kay Vuichard, Wanda Webb and Judy West.. She thanked the South County group for all the Memory Boxes they painted and had on display at today's meeting. Vada and her group will be providing the refreshments at the June meeting.

Sue Struckhoff announced that she has a bag of plastic tubes from her dog's treats if anyone would like to have some. These are great containers for brushes or pencils and they are free.

Liz Geers announced that she has about 50 blue wine bottles if anyone is interested. She will sell these for \$1.00 each and will donate the money to the Memory Box Program. If you are interested, see Liz after the meeting and she will bring them to the next meeting.

Jim reminded everyone to vote on Retreat Projects after the meeting. He has the ballots.

With no further business, Mary Jo Kumer made a motion to adjourn the meeting. This was seconded by Jim Lair. The meeting adjourned at 2:00 p.m.

Respectfully submitted,

Jean Rogenhofer,
Recording Secretary

<u>June</u>	
1	Judy West
6	Linda Nelson
10	Marilyn McDonald
14	Delia Larkins
22	Ingrid Oertli
23	Bonnie Heggemann
26	Jean Rogenhofer
<u>July</u>	
17	Barbara Stanfield
17	Jean Ellison
20	Dixie Reeb
21	Cindy Rupp
<u>August</u>	
1	Ann Morhman
2	Jeanne Abraham
6	Liz McClintock
8	Carol Rufkahr
13	Jim Lair
24	Sue Struckhoff



*Happy Birthday
to our summer
birthday list!!*

Memory Box Program

This note was received by Gloria.....

4/14/2011

Dear Ms. Jalk,

My name is Gale Jeblonski I am the bereavement coordinator here at Peninsula Regional Medical Center; Salisbury Maryland. The memory boxes arrived today. Words cannot describe how beautiful they are. Brought tears to my eyes. So much talent given for so many in need. Please, please thank all the artist for their generosity and kindness. Truly
Gale Jeblonski



Gale M. Jeblonski, RNC
Perinatal/Infant Bereavement Coordinator

100 East Carroll Street
Salisbury, Maryland 21801-5493
410-543-7039 • Fax 410-543-7323
gale.jeblonski@peninsula.org

www.peninsula.org

Josee received this through the website.

Hello, this message is for Ginger German who created the lovely memory box for my family.

I just wanted to express my gratitude for this memory box. Our little boy, Brian, died an hour after his birth last Tuesday, April 5. This box is a wonderful place to keep the items we have to remember him by – an outfit he wore, pictures, and other items. We had a small service for Brian yesterday at All Souls cemetery near our home in Pennsylvania. He will rest in the baby section. We know that he will be with us always as our guardian angel.

Thanks again, so much, for what you did for us. God bless you and your organization.

Kathy Ventrescaso

Josee also received this through our website.

My daughter Laken was born April 8th of last year. Tomorrow will be her 1st heavenly birthday. Before leaving the hospital last year I was given a beautiful memory box with the sweetest little lamb painted on it. I didn't have a lot to put in to it to remember my daughter at the time, but as the year went by I have collected things that reminded me of her. Tonight I took it from the shelf and was going through her things and came across the name Ann Mohrman, on the inside of the lid. I want to send a big thank you to your organization and to Ann. I know a lot of love went into making this memory box and it sure has meant the world to me. Thank you for what you do!

Melissa
Kentucky

Donna found this one on the MB website

We just received our boxes from Gateway Decorative Artists and I want to thank them for the beautiful boxes. They are so beautiful!!! Our patients will have such a great gift to store some of their most sentimental memories in. THANK YOU.

Sincerely,

Stephanie Aldrich, RN, BSN, RNC
Labor and Delivery
Oregon Health Science University
Portland, OR



June 7th Memory Box Paint in by Ginger German



**Ginger German Cabinet/Fundraiser
Opportunity of Ownership - \$1 / 6 for \$5**

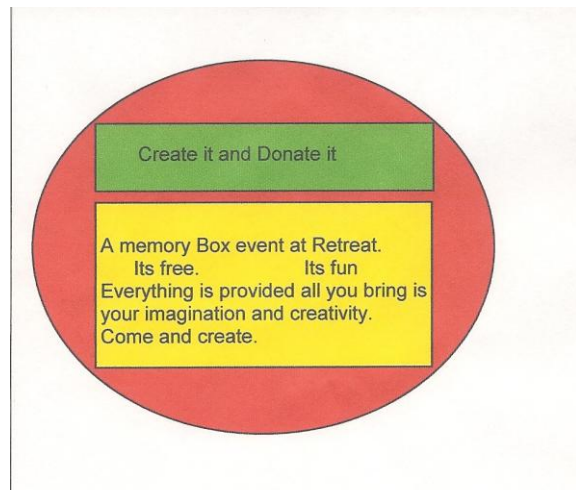
June 7th Memory Box Paint in

Taught by Ginger German

Lindell Bank in ST. Peters

9am till....?

Bring your usual painting supplies and a sack lunch.



Gateway Gourmet

Cloud Nine Salad

- 1 pkg instant vanilla pudding
- 1 pkg tapioca pudding
- 20 ounce can crushed pineapple
- 15 ounce can mandarin oranges
- ½ cup maraschino cherries chopped
- 8 ounce frozen strawberries chopped
- 2 bananas chopped
- 2 ounce pkg of nuts (pecan chips) optional
- 8 ounce pkg of cream cheese
- 2 8 ounce container of sugar free whipped cream

Drain pineapple and oranges reserving juice. Cook puddings using juices plus enough water to make 2 cups. Let pudding cool. Beat cream cheese until creamy. Add cooled pudding. Then add pineapple, mandarin oranges, cherries, strawberries, bananas and ½ of the nuts. Fold in 1 container of whipped cream.

Cover and refrigerate after putting in a serving bowl for at least 3 hours (overnight is best). Before serving, spread the other container of whipped cream on top making "clouds". Sprinkle with remaining nuts if desired.

This is a good dessert for those watching blood sugars. I doubled everything when I made this for the April meeting. Oh, peaches might be good in there too. Your family will love it!

Karen Steiner

More Gateway Gourmet

Easter Surprise Cupcakes

served at April 2010 Meeting

2/3 C butter or margarine, softened

1 C light brown sugar, packed

3/4 C sugar - granulated

2 eggs

1 t almond or vanilla extract

2 3/4 C all-purpose flour

1 t salt

1 t baking powder

1 1/4 cups milk

24 unwrapped small chocolate eggs (don't forget to unwrap)

Powder sugar - to make lemon, chocolate or strawberry frostings..or if in a rush..use canned frosting

green tinted coconut

jelly beans, chocolate eggs or other small Easter candies or other decorations

light shades of pink, blue, purple or green pipe cleaners

light shades of pink, blue, purple or green ribbons

Heat oven to 350. Grease 24 medium muffin tins or line with Easter themed baking cups. Mix butter, sugars, eggs and extract in large mixing bowl until blended. Beat on high, scraping bowl occasionally, 5 minutes. On low speed, beat in flour, baking powder and salt alternately with milk.

TO HIDE SURPRISE: Fill muffin cups 2/3 full and place unwrapped chocolate egg (or \$100.00 bill) in center of each.* Top with remaining batter, until 2/3 full. Bake 18-20 minutes or till top springs back when touched. Cool. Decorate with frostings. Sprinkle dyed green coconut (for Easter grass) on top. Bend a ribbon cover pipe cleaner and push down into the sides of the cupcakes to resemble a basket handle. Add Easter candy eggs and or other candies and decoration.

Enjoy! *Congratulations to the winner of the \$100.00 bill, if you found it in your cupcake!



Gateway!! - Look what is coming !!

4 day - Annual Labor Day Seminar followed by 5/1/2 day Portrait Seminar

Sept. 2nd, 3rd, 4th & 5th - Portrait Sept. 6th, 7th, 8th, 9th, 10th & 11th

Featuring 10 action packed days of painting with Guest Artist: Mary Carole Larson!

Location; #33 South Ninth Street - East Alton, IL 62024

Fees: \$450.00 for all 4 days of Labor Day Seminar or \$125.00 per indiv. day

Deposit of \$75.00 per day for each day you wish to paint

****Portrait Seminar Fees are separate

Seminar fees include ALL supplies: Paint, thinner, medium, palette, easel, patterns, photos, reference materials, canvas and lunch.

52" Plasma screen TV monitors will be used for additional visual aid.

BYOB: Bring your own brushes! We do have loaner brushes available for those of you who do not have oil brushes.

The seminar location is very spacious, well lit, handicap accessible with convenient restroom and kitchen facilities.

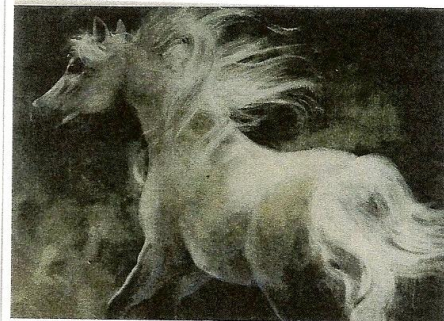
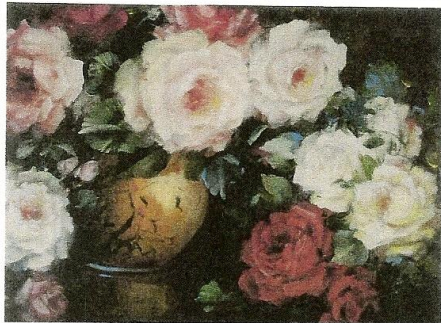


Friday - Sept. 2nd



Sunday - Sept. 4th

Saturday - Sept. 3rd



Monday - Sept. - 5th

For additional information, flyers and registration forms, please contact your hosts:

Jim Lair and Jo Lair - at 618-258-9905 or artsonfire@sbcglobal.net



Information deadline for September newsletter is August 30th.

Checklist for June 12th meeting

- ✓ Bring your show and tell projects
- ✓ Memory Boxes—painted, varnished, ready to ship
- ✓ Donations for Turning Point
- ✓ Paperback books for the USO
- ✓ Donations for Riverbend Animal Shelter
- ✓ Bring your usual painting supplies
- ✓ **Bring a friend**

Great advertising opportunities

Ad	Size	Members		Non-Members	
		issue	year	issue	year
Full Page	8 1/4 X 10 3/4	\$ 10.50	\$ 50.00	\$ 13.25	\$ 62.50
Half Page	8 1/4 X 5 1/4	\$ 8.00	\$ 37.00	\$ 10.00	\$ 46.25
Quarter Page	4 X 5 1/4	\$ 5.50	\$ 25.00	\$ 6.50	\$ 31.25
Business card format	4 X 2 1/2	\$ 3.00	\$ 12.50	\$ 3.75	\$ 15.50

Personal messages are \$.05/word

Wichita Convention Report- 2011

We started out from O'Fallon at around 9 a.m. on Mon. the 16th.



As you see we were seriously hopeful about our purchases and class pieces this year. There were 7 of us traveling together. We had a great time on our trip. When



we arrived in Wichita at the Hyatt – we were greeted by a young gentleman, Justin was his name. He was pleasant and a lot of fun and so willing to help us unload or find our way to a parking place. WE didn't need help unloading – Janie, who planned ahead for us, had included two huge dolly's to put our luggage on – all we had to do was check-in and wheel our stuff upstairs. Only one set back...we couldn't fit in the garage!! Oh well, so we found an open air parking lot across the street. <SMILE>

Our first order of business was to get to Class Sales and help Debbie Finklang pick some classes.



Although we did not attend the "Flower Power Opening Party" - You can see by the picture those that attended certainly look like they had a good time.

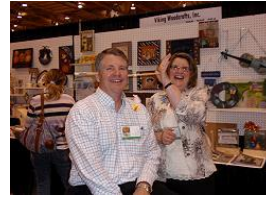


Tuesday, classes started and we were on a roll....some of us going in different directions. Wed. morning was the Annual meeting. The meeting ended early – for the first time that I can remember. The Board kept things moving right along. I will mention the results of that election at the end of this review. Our own Donna Wessel was a "Sergeant at



Arms".

I think if anyone can help hold the election process together, Donna could do it. Corkie Dunlap was in charge of announcing the award winners and one of the things the Board requested - was for people to please send in nominations for the awards. There's an award for an outstanding chapter member, which they can't give if chapters don't nominate someone. Also, they said that chapters and individuals should be sure to apply for the available scholarships. So give it some consideration for next year's convention.



Wed. evening the Trade Show opened. The show was a little smaller this year but it didn't really feel like it and there was a nice variety of exhibitors and a lot of new products. This year several booths had Make-it/Take-its going on



- I believe I heard a total of 15 different ones were being offered. Some charged a nominal fee and a lot of them were free. These included pretty glasses, a nice big cup cake on a canvas, bookmarks and colored pencil projects. I hope they plan those again next year - it was a reprieve to sit for awhile and try new products or learn a new technique during the shopping experience.

Thursday - we're off again to all of our classes. It was a busy day, but we managed to hit the trade show floor again.

Friday was our planned day to shop for the "goodies". We all did rather well on our purchases, we were excited to share our "finds" with each other at the end of the day. After all, we really didn't have any restrictions on how much we could bring home (other than funds to pay for them, of course ☺) we WERE pulling a trailer!

We did not attend the Banquet - but it certainly looks like there were some nicely decorated tables.



The hotel provided a shuttle for us to go downtown for dinner. We had a fun time, our driver Miguel was eager to please us. The staff at the hotel was very accommodating and cordial.

Saturday some of us were off to classes again.....all day!!!!!!! As we were heading back to our room, Elizabeth Stevenson with SDP stopped us in the hallway and gave us tickets to see Josh Groban. He was appearing at the Arena that evening. What a great entertainer!! His opening act was a fellow name "ELU" - he also was a great entertainer. We did not recognize all of the songs, but the music was wonderful. It was a nice ending to our week in Wichita.

Wichita is a great place to visit, it's easy to find your way around, and there was hardly any traffic. They have lots of shopping possibilities. I hope you will give serious consideration to going to Wichita next year for the 40th Anniversary Conference. The dates are: May 14 - 19th, 2012. Plans are being made for a grand time. The theme is going to be "Flights of Fancy" and Sherry Nelson is the conference artist. SDP Staff works very hard to make this show a success to begin with and they work long hours during the show. Whenever you run into one of them, they always have a big <SMILE> to give you.

We started our trip back home on **Sunday**, the weather was absolutely beautiful in Wichita...a little on the windy side, but not bad at all. As we moved further on and into MO, the weather started changing. Yes, we drove through that terrible storm. For a little while there I felt like we were driving through the Red Sea., the windshield wipers were working as hard and fast as they could. We managed to get through it all unscathed, thank goodness.

Results of the election are:

Sue Bowers is the President this next year.

VP/President elect: Linda Biedermann

Secretary: Kathy Swigon

Board members at large: Bobbie Campbell, CDA; Susan Phillips; & Linda Sharp, CDA.

Nom. Committee members are: Margot Clark; Darla Foreman and Erika Joanne.

The SDP dues increase was voted in for next year, they will go up to \$50. The big discussion was we need to increase membership in SDP - more members, more money to help SDP through the times. My daughter-in-law, Nancy Falk, Debbie Finklang, and Cheryll Wilburn were all brain storming in the room on ideas of what we could do to help this along. I have set them up on a "WAYS AND MEANS" committee. Nancy Falk will chair this committee. If you have any ideas you would like to share, please let one of the committee members know.

OKAY - that's a brief summary (ha! ha!) of the Conference this year. There are lots of other stories to tell, my lips are sealed. What happens in Wichita - stays in Wichita!! ☺

Plan to attend NEXT YEAR'S 40th Anniversary!!

Gloria Falk, TDA

President

Your national dues need to go directly to SDP

Name _____ Membership # (if renewal) _____
 Household Member Name _____ Membership # (if renewal) _____
 Business Name (if joining as a Business Member) _____
 Mailing Address _____
 City _____ State _____ Postal Code _____ Country _____
 Email _____ Website _____
 Phone (_____) _____ Fax (_____) _____

I am a member of at least one SDP Chapter and I wish to receive SDP e-mail chapter communication.

2. Membership Categories (Check one, please)

U.S.

- \$40 Individual (\$45 after Dec. 1)
 \$70 Business (\$75 after Dec. 1)



3. Business & Teacher Directory Resource Categories (optional)

Business members, Check all boxes that apply for the Business & Teacher Directory. Listings are FREE with your business membership.

<input type="checkbox"/> Author	<input type="checkbox"/> Retailer
<input type="checkbox"/> Distributor/Wholesaler	<input type="checkbox"/> Teacher
<input type="checkbox"/> Home Studio	<input type="checkbox"/> Travel Teacher
<input type="checkbox"/> Manufacturer/Importer	<input type="checkbox"/> Other
<input type="checkbox"/> Publisher	

4. Payment

Make checks payable to: SDP, 393 N. McLean Blvd., Wichita, KS 67203-5968. For faster service, use MasterCard or VISA and call (316)269-9300 ext. 105 or fax application to: (316)269-9191 Join online at www.decorativepainters.org

VISA MasterCard Exp. Date _____ Phone _____
 Card Number _____ Signature _____

YES! This is a Gift Membership from _____ Membership # _____

DUES POSTMARKED AFTER DEC. 1, REQUIRE AN ADDITIONAL \$5 POSTAGE/HANDLING FEE (DOES NOT APPLY TO NEW MEMBERS)



➔ Membership in this Chapter is open only to persons who are dues-paying members to the SDP

2011 Gateway Decorative Artists Membership form

Name _____ Last _____ First _____ Spouse _____ New Member Renewal

Address _____

City _____ State _____ Zip code _____

Phone Number _____ Email _____

Birth Date : Month ____ Day ____ SDP Membership # _____ (include a copy of SDP card)
 Member of other chapters: _____

Check all that apply:

Individual Member Teacher Business Member Name of shop: _____

Certification: MDA CDA TDA

Preferred Painting Medium: Oil _____ Acrylic _____ Watercolor _____ Other: _____

What year did you start painting? _____

Favorite Artists: _____

Annual dues are \$20, payable by Dec 31, 2011. Please make check payable to: **Gateway Decorative Artists**

Mail to: **Jo Lynne Lair, 106 Cooper Ave., East Alton, IL 62024**