

# Gateway Gazette

[www.gatewaydecorativeartists.com](http://www.gatewaydecorativeartists.com)

## Inside this issue:

Calendar	2
Presidents Message	3
Vice-President & Membership	5
Programs	6
Chapter Minutes	7
Memory Boxes	9
SDP Happenings	12



## Refreshments

Ginger German, Liz Geers, Mary Jo Kumer,  
Marilyn McDonald, Ann Mohrman,  
Linda Nelson, Karen Steiner,  
Kay Vuichard, Maureen Wasserman

## Gateway Chapter Meeting

Sunday, April 15th, 2012

Maryland Heights Community Center  
2344 McKelvey Road, Maryland Heights, Mo.  
314 738-2599

Meeting Starts at 1:00 p.m. Doors open at 12:00



Directions from I-270

Dorsett Rd. west  
McKelvey Rd. right  
Ameling Rd. right  
McKelvey Rd. left

Paint-In with Vada Galvan, TDA  
After the Meeting  
Supplies to bring on Page 4



## Board Members

### President

Lorie Reece 314 971-0190  
 president@gatewaydecorativeartists.com

### President Ex-Officio

Gloria Falk 636 561-6623  
 arttouch@aol.com

### Vice President

James Lair 618 258-9905  
 vicepresident@gatewaydecorativeartists.com

### Program Chairman

Barbara Ogden 636 928-5503  
 program@gatewaydecorativeartists.com

### Membership Secretary & Publicity

Jo Lynne Lair 618 258-9905  
 membership@gatewaydecorativeartists.com

### Recording Secretary

Jean Rogenhofer 314 739-3493  
 secretary@gatewaydecorativeartists.com

### Treasurer

Donna Wessel 314 428-8226  
 treasurer@gatewaydecorativeartists.com

### Newsletter Editor

Sandra Reynolds 618 979-2409  
 newsletter@gatewaydecorativeartists.com

### Area Representatives

South County Joan Love 314 842-7288

North County

Illinois Lida Gillham 618 656-9294

West County Maureen Wasserman

636 227-2843

If you have anything to pass on to the Chapter, such as news of an illness, congratulations, etc. contact an area rep or your Membership Chairman, Jo Lynne Lair.

### Standing Committee Chairs 2012

Nominating Committee Cheryll Wilburn

Refreshments Debbie Finklang

Gold Brush Award Donna Wessel

Librarian Barb Ogden

Historian Marilyn Hartnett

Ways and Means Nancy Falk

Parliamentarian Ingrid Oertli

### Special Committee Chairs

Christmas Party Barb Ogden

Memory Box Program Gloria Falk

Webmaster Mary Jo Kumer

Josée Laferriere

## Chapter Schedule of Events

April 3 Memory Box Paint-In with Donna Wessel Lindell Bank

April 15 Chapter Meeting Maryland Heights

April 21,22,23 Karen Hubbard Seminar Wingate Hotel

May 1 Memory Box Paint-In with Ginger German Lindell Bank

June 4 Memory Box Paint-In with Barb Ogden Lindell Bank

June 10 Chapter Meeting Maryland Heights

July 10 Memory Box Paint-In Lindell Bank

August 7 Memory Box Paint-In with Donna Wessel Lindell Bank

Sept. 9 Chapter Meeting Maryland Heights

Sept. 11 Memory Box Paint-In Lindell Bank

Sept. 28,29,30 Yearly Retreat Trout Lodge

Oct. 2 Memory Box Paint-In Lindell Bank

Nov 3,4,5 M. Polomchak Seminar Holiday Inn Express

Nov. 11 Chapter Meeting Maryland Heights



Memory Box Paint-In With Donna Wessel  
 SDP Gift tag paint in following at 12:30  
 Lindell Bank—St. Peters  
 Come & Join Us April 3 for either session

## News from your President



Hi Members!

I hope everyone has been well and I look forward to seeing everyone at the next meeting. To those under the weather, please get well! I really want to see you at the next meeting.

With all this wonderful weather, I am having a hard time sitting down after work and getting my projects painted. I have started working on my retreat projects and hope I get them done by the April meeting, but will you be able to guess which ones are mine!!!! Please remember to bring your retreat pieces in for voting to the next meeting.

Vada will be teaching a whimsical cat at the meeting. I hope all of you will stay and paint with Vada. It has been awhile since we all painted together, and it is wonderful when you can support our women who have graciously offered to teach for us.

Members who have specific by-law articles they feel might be unclear, or need to be reviewed for change or clarification, please submit their specific questions/concerns to Donna Wessel, the committee chair **in writing, please**. This will give the committee a hard copy of your suggestions to be reviewed rather than trying to rely on memory, if transmitted via phone or in person. If we need further enlightenment as to what you are trying to suggest, we will have something in our hands with which to refer if we need to contact you for more information.

The SDP convention will be here before you know it. If you wish to paint a few of the favors (painted tags) that were discussed at the last meeting, please contact Gloria as she is the Captain on this project. We have told them that we would paint 50 of them For "Flights of Fancy".

Also, be sure to bring your donations for our Missouri pet center, Pets Alone Sanctuary in Troy, along with the women's shelter. The items needed are shown on the charity page.

I am so glad that everyone has taken an interest in the upcoming seminars and expressed that Sharing Workshops are wanted! I love the Sharing Workshops. Please see Barb if you are interested in doing a Sharing Workshop. You may not realize it, but you do get paid for teaching a Sharing Workshop! What a better way to get paid for what you love, and paint with such lovely women!

Happy Birthday to all members that had birthdays, or will be having them shortly. I hope you enjoy your special day and get everything you wished for.

See you all soon! Stay healthy!

Lorie Reece





**APRIL BIRTHDAYS**

15th Janie Parisi  
 26th Jo Lynn Lair

**MAY BIRTHDAYS**

3rd Gloria Falk  
 Joanne Goers  
 4th Peggy Araki  
 11th Patricia Manlove

**JUNE BIRTHDAYS**

1st Judy West  
 6th Linda Nelson  
 10th Joyce Miller  
 14th Delia Larkins  
 22nd Ingrid Oertli  
 23rd Bonnie Heggemann  
 26th Jean Rogenhoefer

**CAT'S MEOW**

Vada Galvan, TDA

Please bring the following  
Materials for the Paint-In after the  
Meeting. Cost is \$3.

**BRUSHES, PALETTE,  
WATER BIN, #001 OR 005 PIGMA PEN**



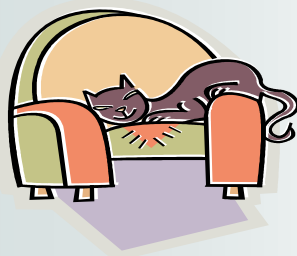
Louise Kern passed away  
Feb. 13, 2012.

Former member and officer  
of Gateway  
Decorative Artists.

She volunteered many hours  
to SDP at Conferences.  
Her friendly personality and  
smiling face  
will be missed by those  
whose life she touched.



Easter Greeting



## News from the V.P. Easy Chair

RETREAT!!!!!!

September 28th, 29th and 30th  
at the beautiful Trout Lodge in Potosi, MO

Members get to view and vote on the projects that will be on display at the April 15th meeting. **We ask that only those who plan to attend be the ones that vote.**

Our theme this year is "Pajama Party". We hope you can make it this year, it is always a memorable experience. If this will be your first year, you are going to have a great time.

Remember to reserve your rooms early at the Lodge. Our rooms are on the same floor as the classrooms again this year. This is very convenient for you. If you are needing a roommate to share with, please announce this at the April meeting and hopefully, we can find you someone that day.

Teachers, remember - DO NOT sign your projects until voting is complete. Also the completed project as displayed will be what is provided, unless otherwise stated on your submission slips.

I look forward to seeing you all at the April meeting.

**Jim Lair**  
VP



## Membership Chair News.....

**Welcome to our newest member!!**

**Marilyn Todd**  
15708 Eldon Ridge Drive  
Chesterfield, MO 63017  
ph: 636-973-9238  
email: emtee0714@gmail.com  
B/D: 07-14

For all of you who have signed up for the "Pin" Pal program - your names will be given to you next week. You will have plenty of time to paint up your pin for your pal - they will be exchanged at the November meeting. We did this a few years ago, and it was a lot of fun for those that participated. If you did not sign up and still want to get in on the fun - please contact me no later than next Friday March 23rd.

See you all soon at the April meeting.  
Jo Lynne Lair

**Also correct your directories for Barb Ogden's address : it should read - 1424 Cave Springs Estates Drive**

## PROGRAM CHAIR REPORT

Happy Spring everyone! I hope the cob webs of winter have been chased away and the fresh air and sunshine have breathed new life into your creative juices.

If you have not signed up for Karen Hubbard's Seminar this meeting will be your last opportunity to do so. We will be painting with Karen on April 21, 22, and 23. If you are signed up, please come by the Seminar Table to pick up your patterns.

Mark Polomchak's Seminar is November 3, 4, and 5, so please come by and sign up to paint in watercolor.

We have chosen a date for Tina Norris, March 23, 24, and 25, 2013. As soon as she sends me projects we will vote and choose what we would like to paint.

Thank you to those of you who filled out the Survey. I got some great ideas and even some volunteers. If you would like to see the results, come by the Seminar Table. If you did not get a chance to fill out the Survey I will have them at the table also.

We will be painting with Vada Galvan after the business meeting, Please plan on staying...it sure looks cute!

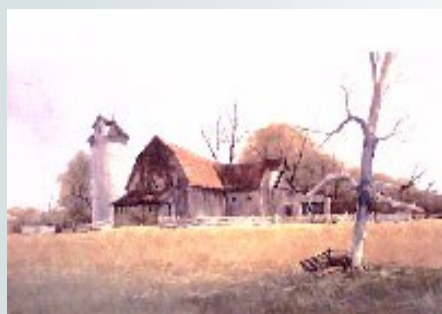
See you on Sunday.  
Barb

---

### KAREN HUBBARD SEMINAR— APRIL 21,22,23



**Mark Polomchak's Seminar is  
November 3, 4, and 5**





## GATEWAY MEETING MINUTES—FEBRUARY 12, 2012



The first meeting of 2012 for Gateway Decorative Artists was held on February 12<sup>th</sup> at the Maryland Heights Center. Lorie Reece called the meeting to order at 1:05 p.m. Ginger German gave the invocation.

At the last Board Meeting, the donations for SDP and DAC, were discussed and it was suggested we give \$125.00 to SDP and \$100.00 to DAC as we have done in previous years. This was voted on and approved by the membership.

It was also decided that we keep the same charities - the Memory Box Program, the River Bend Animal Shelter, the Women's Shelter and the USO. Nancy Falk had asked the board in a letter, if we could also help with another animal shelter. Lorie called upon Gloria Falk to present this to the membership at the meeting in Nancy's absence. It was suggested that we alternate the donations. This meeting (Feb.) would be for River Bend and the April meeting would go to the new shelter, then June to River Bend, etc. The November donations could be divided between the two. Joan Love made a motion to include this new shelter in our charities. This was seconded by Joyce Miller. After a vote, the motion passed. It was mentioned that newspapers are also needed at the shelters.

Lorie advised that Josée Laferriere is a honorary member of our chapter, as she has volunteered to continue doing our website.

Lorie reminded everyone that the 2012 Directories are available at this meeting. She had 80 Directories printed at a cost of \$90.00. Check your information to make sure it is correct. If any changes need to be made, let Lorie or Jo, know. Corrections will be noted in the next Newsletter.

The By-Laws need to be reviewed this year. Those on the committee are Gloria Falk, Donna Wessel, and Lorie Reece. We need several others to be on the committee. Ellen Rohne and Kay Vuichard volunteered.

It was decided to change the extra charge for non-members taking a seminar from \$20.00 per day to \$10.00 per day. A motion was made and a vote taken and passed.

Viking has informed us that they will give a 20% discount off items in their catalog for members of our Chapter. They will give a 40% discount on orders of ten or more of an item.

This year, National is celebrating their 40<sup>th</sup> Anniversary. They are in need of favors and have asked for chapters to volunteer to paint wooden gift (luggage) tags. We have decided to do 50 of these. If you would like to help paint some, please see Gloria after the meeting.

Lorie asked if there were any corrections to the November or December minutes as printed in the Newsletter. Hearing no corrections, the minutes will stand as printed.

Lorie asked if there were any corrections to the Treasurer's Report. Someone wanted to know what the Administrative costs included. Donna explained that this included \$187.00 Officers' Bonding Insurance, the website cost, the chapter liability insurance, the charms, the Gold Brush Award, our annual SDP fee, mileage and Gold Brush engraving fees, sales tax on purchases, etc.

Jim gave a report on Retreat. It will be held at the YMCA Trout Lodge again on September 28<sup>th</sup>, 29<sup>th</sup> and 30<sup>th</sup>. The theme will be "Pajama Party". Jim has the Teacher Submission Forms. When a teacher submits a project, she must list what is included in the cost or what is not included. These forms should be back to Jim by March 15<sup>th</sup>. Voting will take place at the April meeting.

Mary Jo gave a report on Memory Boxes. This year, so far, 45 have been mailed out and one was hand delivered. Joan Love will be teaching the March paint-in - a Lady Bug and 2 flowers. Donna will be teaching the April paint-in. Gloria Falk added that Tolefriends was generous and paid for all of the shipping of Memory Boxes we had last year, but they are now out of money for that endeavor and will not be helping with postage this year. Shipping costs run about \$50.00 per month. There are 420 hospitals on the list and 60 chapters that participate in this program. Some of the local hospitals are: Lake St. Louis, DePaul, and St Joseph West. We also ship to the U.S. Virgin Islands, but that hospital reimburses us the postage.

Barb gave a report on the 2 seminars we have scheduled. Karen Hubbard will be Saturday, Sunday, and Monday, April 21st, 22nd and 23rd at the Wingate Hotel. Mark Polomchak will be on Saturday, Sunday, and Monday, November 3<sup>rd</sup>, 4<sup>th</sup> and 5<sup>th</sup>. This will probably be held at the Holiday Inn Express. This is just a short distance from the Wingate. It has a bigger room and good lighting for the same price we pay for the Wingate room. For those who are taking the seminar and wish to spend the night, the room will cost \$79.00 per night, which includes breakfast. Barb would like everyone to fill out the Survey Form at today's meeting. If you would like to volunteer to teach a paint-in after one of our meetings, please let Barb know.

Jo reported that we have 55 current members. Today we have 2 guests. Door prizes were donated by Gloria Falk and Deco Art. Winners were Delia Larkins and Jim Lair.

Jo announced that River Bend will be having their annual "ARTadoptathon" auction in Alton, IL. She is collecting donations for the auction. She invited everyone to come. There is a \$5.00 cover charge. There will be live music.

Jo mentioned doing the "Pin Pals" again and if you're interested in doing this, she has a list to sign up.

Mary Jo showed the projects that were brought to the meeting for "Show and Tell"

Donna talked about the various places that she and Gloria checked out for Seminars. They liked the Holiday Inn Express and chose that for Mark's Seminar. Those wanting more information or to book a room, could call Terry at 314-298-3400. Donna said she has some free magazines. She also has some chapter patches, pins and jewelry for sale, and has a Genesis Paint Set for \$25.00.

Lorie thanked Sandra for the nice job she did on the Newsletter. The deadline for the next Newsletter will be March 18. Sandra said she is open for ideas for the Newsletter.

Mary Jo mentioned that Janie Parisi will be participating in the 60 mile walk "Cure for Cancer" in August in Chicago. If any one would like to donate for this cause it would be appreciated.

Debbie Finklang thanked the board and those that provided refreshments for today's meeting. She also thanked Gloria for donating all of the table arrangements for today's meeting. There was an extra centerpiece and a drawing was made for that. Judy West was the winner. The Western Girls will be in charge of refreshments for the April meeting.

Barb Ogden reminded everyone that Rose Wilde from Wood Icing will have a presentation after the meeting today.

Mary Jo Kumer made a motion to adjourn the meeting. This was seconded by Joan Love. The meeting adjourned at 2:05 p.m.

Respectfully submitted,

Jean Rogenhofer

## NOTE FROM YOUR TREASURER—DONNA WESSEL

Kay Vuichard asked a question of me at the February meeting regarding the December 21, 2011 Treasurer's Report. After reviewing said report her perception was that year-end Administrative Expenses seemed unusually high to her and she wanted to know what kinds of expense items were allotted to this category. While it is true that Administrative Expenses in 2011 were higher than 2010, they were actually lower than those of 2009. Obviously, these expenses can and do vary from year to year.

It was a good question. For those who were not at the meeting and who may be interested, I will recap the information I shared at that time. The following chapter expenses are accounted for under Administrative Expenses:

- Website Domain Name – 3-year renewal due mid-March, paid February 2012
- Website Host – Formerly an annual renewal; will begin 3-year renewal July 2012
- Officer Bonding Insurance – Annual Premium
- Missouri State Sales/Use Tax Filing – Due annually by January 31 for prior chapter year
- Chapter Liability Insurance – Annual Premium paid to SDP
- SDP Chapter Membership Fee/Report – Annual Payment
- Missouri State Nonprofit Annual Registration Report
- Missouri State Change of Registered Agent Filing – Filed when necessary
- Chapter Service Awards for Members and Officers – Purchased usually annually from SDP
- Gold Brush Jewelry and Certificates
- Engraving Fee and Mileage Expense for Gold Brush Jewelry and Service Awards



Donna Wessel, Treasurer



## GOLD BRUSH AWARD



Did you know?

*Gateway Decorative Artists bestows upon its newly chosen Gold Brush Award recipient a very special necklace. Suspended from the neck chain is a James Avery charm displaying the Living Tree symbol. In the words of the award's creators,*

*“we felt the Tree of Life is symbolic in that the caliber person who it is determined will receive the award is the root and foundation of the life of our chapter. It is through her unselfish efforts that our chapter's tree of life blossoms and we are all able to share in that harvest of love. The circle that surrounds the tree symbolizes the ring of friendship her dedication helps our chapter provide. She sets the example for us to look to and with this pendant we hope to offer her our gratitude and respect.”*

This is a very special gift, indeed, to be cherished and worn with pride. The next person to wear it should also be a very special individual whose service to the chapter is both memorable and exceptional.

## UPCOMING MEMORY BOX PAINT-INS



SDP GIFT TAGS APRIL 3  
AFTER MEMORY BOXES



May 1—Ginger German - Teacher

## 2012 Wichita Conference

### Flights of Fancy: Celebrating 40 Years of Painting

Join us **May 14-19, 2012** in Wichita, Kansas as we celebrate the Society of Decorative Painters' Ruby Anniversary! Make plans now to share this exceptional occasion with your SDP family.



June 4 - Barb Ogden - Teacher

**At the last Gateway meeting, it was voted and approved by the membership to sponsor two shelters this year: PALS and RiverBend. switching every other month. APRIL is the month to support PALS. Please look at the WISH LIST below, and if you could help fulfill this in any way – we would really appreciate it.**

**THANK YOU, THANK YOU, THANK YOU!  
to all who voted to accept PALS as an additional shelter to support. I appreciate it.**

**Nancy Falk**

**PALS - Pets – A- Lone Sanctuary**

**Location:** 4287 Hwy 47 West Hawk Point, MO 63349

**Mailing Address:** P.O. Box 462 Troy, MO 63379

**Direct Line:** 636-338-1818

**Website:** <http://www.pals-pets.com>

If you need more information contact me at 636-329-1360.

## Donations:

All of our operating expenses, vet services, building maintenance, food, and shelter supplies come from donations and fundraising activities. We are a certified 501(c)(3) charity so your donation is tax deductible to the extent allowed by law. Any donation is needed and greatly appreciated. Contact us and let us know how you would like to help or if you would like to become a member of PALS. Thank you!

## Our Wish List

- Volunteers
- Dog and Cat Treats
- Dog or Puppy nylon collars
- Dog & cat toys
- Cat Litter – Low Dust
- Blankets and Towels (gently used)
- New or used kennels or dog runs
- Laundry Detergent-liquid high efficiency
- Fabric softener or dryer sheets
- Bleach
- Dish soap
- Hand soap
- Surgical gloves
- Paper Towels
- 13 and 39 Gallon Trash Bags
- Computer paper (white or colored)
- Financial donations
- Newspapers (no circulars, please)



## FEBRUARY MEETING PICTURES



**ROSE WILDE FROM WOOD ICING PRESENTATION**



**ROSE WILDE DEMO PIECE**

**CLUB MEMBERS SHOW & TELL TABLE**

### GREAT ADVERTISING OPPORTUNITIES

Ad	Size	Members		Non-Members	
		issue	year	issue	year
Full Page	8 1/4 X 10 3/4	\$ 10.50	\$ 50.00	\$ 13.25	\$ 62.50
Half Page	8 1/4 X 5 1/4	\$ 8.00	\$ 37.00	\$ 10.00	\$ 46.25
Quarter Page	4 X 5 1/4	\$ 5.50	\$ 25.00	\$ 6.50	\$ 31.25
Business card	4 X 2 1/2	\$ 3.00	\$ 12.50	\$ 3.75	\$ 15.50

Personal messages are \$ .05/word

**ALL ADS MUST BE PAID FOR IN ADVANCE OF PUBLICATION**

Ads should be camera ready, which means typed, artwork, completed and ready to print. Gateway Gazette is good advertising for those wishing to advertise their business, shop, classes, wood, painting supplies or other services. **Contact: Sandra Reynolds at 618-979-2409 or [newsletter@gatewaydecorativeartists.com](mailto:newsletter@gatewaydecorativeartists.com) for more information.**



## SDP HAPPENINGS

### ENTER TO WIN ORIGINALS FROM SDP 'CDA'S & MDS

We will again be having a drawing at the Certification Booth for original items painted by some of our talented CDAs and MDAs! Many marvelous artists have agreed to donate a piece. We hope to have over 25 pieces and pictured here are just a few.

This drawing has been a success in past years and we wanted to give you a head start on purchasing your tickets. The drawing will be held on Friday, May 18th, 2012 at the Certification Booth at SDP's 40th Annual Conference and Expo. You do not need to be present to win, but we would love for you to be there! Drawing tickets are \$1 each or six for \$5. **If mailing your tickets, please postmark by May 1, 2012.** Tickets will also be available for purchase on-site.

[Download](#) and copy the drawing ticket as many times as you would like and fill out each ticket you wish to submit. Mail the ticket along with payment by May 1, 2012 to: SDP Certification Drawing, 393 N McLean Blvd, Wichita, KS 67203-5968



**A FEW PIECES IN  
THE DRAWING  
ENTER TO WIN BY MAY 1**

### Joann's Fabric & Craft Store Discount Card

Go into a Joann's Fabric and Craft Store and fill out the application. Make sure to bring your SDP membership card to prove you qualify. The new card is valid from 8/1/2011 - 8/31/2012. The Jo-Ann VIP Discount Card can be used for 10% off your total purchase, including regular and sale-priced items. The VIP Discount Card is valid at any Jo-Ann store, and is also valid online at [joann.com](http://joann.com) by using the promotion code supplied on the back of the card. Please note that your new card will need to be validated by store management prior to first use by showing your SDP membership card and a state-issued photo ID.



## Bonus Projects in the new Decorative Painter

### SDP Labels you can customize and Print Out on your Computer

Member Site and Follow these instructions to Download the SDP Open Labels PDF

To fill out form and print: (**Adobe Acrobat Reader** required)

1. Select the hand tool from the Adobe toolbar.
2. Position the pointer inside the first field and click.
3. Enter "Name".
4. After entering "Name", press Tab to accept. This will automatically fill all the "Name" fields in each label. Next, go to "Address" then "City, State, ZIP" field and do the same.

After all fields have been filled, Print.

To save form: (Adobe Acrobat required)

1. Click the "Saves a copy of the file" icon on the Adobe toolbar or choose File > Save As
2. In the "Save PDF file As" dialog box: Choose a file location in the Save in field. Enter a file name for the document in the File name field. Click Save as PDF.

### Word POWER from Readers Digest—submitted by Linda Nelson.

How well do you know your shapes and colors?

1. Cerulean - a) as blue as the sky, b) as green as a pea, c) as red as a rose
2. Ecu— a) pigment from crocus roots, b) fishnet pattern, c) color of raw silk
3. Opaline - a) rainbow array of colors b) dyed, as batik, c) a golden aura
4. Stipple - a) mark with spots, b) sprinkle with glitter, c) stripe with different shades of same color
5. Tattersall - a) colored lines forming stripes, b) lines forming squares, c) lines forming a V pattern
6. Aubergine - a) white like an eggshell, b) yellow like egnog, c) purple like an eggplant
7. Skewbald - a) swirled, b) colorless, c) having brown and white patches
8. Sepia - a) silvery sheen of a pearl, b) pale-pink tint, c) brown pigment from cuttlefish ink
9. Incarnadine - a) tinged with yellow, b) blood red, c) festively multicolored
10. Viridity - a) translucence like glass , b) brightness as of sunshine, c) greenness like grass
11. Alabaster - a) white gypsum, b) arabesque diamond, c) green patina on copper
12. Taupe - a) bluish black of a crow, b) yellowish pink of a salmon, c) brownish gray of a mole

Answers : 1) a,2) c, 3) a, 4) a, 5) b, 6) c, 7) c, 8)c, 9) d, 10) c, 11) a, 12)c

## Charity Corner

### TURNING POINT WOMEN'S SHELTER

*Emergency Shelter* gives assistance to those suffering from domestic violence and sexual assault. They offer crisis advocacy and peer counseling, assist victims in obtaining an Order of Protection from the abuser, and dealing with the Criminal Justice System. They help women gain access to available legal services, social service agencies, and programs that provide other types of needed help. Turning Point serves Franklin, Gasconade, Lincoln, Montgomery and Warren counties. Their location is confidential.

### Items Needed At Turning Point

Toiletries	School supplies
Hair brushes	Head Lice medicine
Hair Picks	Face wipes
Facial Tissues	Toilet Paper
Blankets	Twin Mattress Covers
Towels	Pillow Covers

### PALS - Pets – A- Lone Sanctuary

**At the last Gateway meeting, it was voted and approved by the membership to sponsor two shelters this year: PALS and RiverBend. switching every other month. APRIL is the month to support PALS. Info On PALS wish list and introduction is on page 10**

### BOOKS - BOOKS - BOOKS



**The USO can still use books.** They **MUST** be paperback (no hardback). Please remember when filling out the donation log book.....even if the book is new you have to claim used price (\$1.50 - \$2.00).  
We thank you very much for your support.





# Society of Decorative Painters

## 2012 MEMBERSHIP FORM

### 1 MEMBER PROFILE PLEASE PRINT NAME AND ADDRESS AS IT SHOULD APPEAR ON THE MAILING LABEL

NAME \_\_\_\_\_ MEMBERSHIP NO. (IF RENEWAL) \_\_\_\_\_

HOUSEHOLD MEMBER NAME (IF PURCHASING A HOUSEHOLD MEMBERSHIP) \_\_\_\_\_ MEMBERSHIP NO. (IF RENEWAL) \_\_\_\_\_

BUSINESS NAME (IF JOINING AS A BUSINESS MEMBER) \_\_\_\_\_

MAILING ADDRESS \_\_\_\_\_

CITY \_\_\_\_\_ STATE/PROV. \_\_\_\_\_ ZIP/POSTAL CODE \_\_\_\_\_ COUNTRY \_\_\_\_\_

EMAIL\* \_\_\_\_\_ WEBSITE \_\_\_\_\_

GET THE MOST FROM YOUR SDP MEMBERSHIP BY SHARING YOUR EMAIL ADDRESS WITH US!

PHONE (\_\_\_\_\_) \_\_\_\_\_ FAX (\_\_\_\_\_) \_\_\_\_\_

I AM A MEMBER OF AT LEAST ONE SDP CHAPTER. YES  NO

FOR INFORMATION ON CHAPTERS IN YOUR AREA, PLEASE CALL (316)269-9300 EXT. 107 OR VISIT OUR WEBSITE AT [WWW.DECORATIVEPAINTERS.ORG](http://WWW.DECORATIVEPAINTERS.ORG).

I WOULD LIKE TO GIVE \$2 \$5 \$10 OR \$\_\_\_\_\_ TO THE SDP FOUNDATION, WHICH PROVIDES SCHOLARSHIPS TO MEMBERS AND SUPPORTS OTHER SDP INITIATIVES.

\* NOTE: SDP serves its members by providing information and communications via email. These communications include, but are not limited to, e-zines such as *The Chapter Happenings* newsletter, informational e-blasts, and notification of contests and promotions from SDP business members. If you do not wish to receive such newsletters and communications, please do not provide an email address in section 1, above.

### 2 MEMBER CATEGORIES PLEASE CHECK APPROPRIATE BOXES. Check this box if you wish to pay for 2013 membership also

#### UNITED STATES

\$50 INDIVIDUAL (\$55 AFTER 12/1/11)

\$80 BUSINESS (\$85 AFTER 12/1/11)

#### ANY COUNTRY (U.S. FUNDS)

\$30 HOUSEHOLD (\$35 AFTER 12/1/11)

Household Membership is for an additional member sharing the same address as an Individual or Business member.

If selecting this option, no printed *Decorative Painter* magazine will be mailed to you.

#### INTERNATIONAL & CANADA (U.S. FUNDS)

+ \$80 INDIVIDUAL (\$85 AFTER 12/1/11)

\$50 ONLINE INDIVIDUAL (\$55 AFTER 12/1/11)†

\$110 BUSINESS (\$115 AFTER 12/1/11)

\$80 ONLINE BUSINESS (\$85 AFTER 12/1/11)†

*The higher international rates reflect postage costs, not an increase in dues.*

† Online memberships: You will receive the magazine in its online form only. If selecting this option, no printed *Decorative Painter* magazine will be mailed to you.

#### IMPORTANT

Membership year is Jan. 1 to Dec. 31, 2012. If you join at any time of the year, you will receive the back issues and get all the applicable benefits from months past in that year. Forms postmarked after Dec. 1, 2011, require an additional \$5 late fee. This does not apply to new members or those who were not members in 2010 and 2011.

### 3 ONLINE BUSINESS & TEACHER DIRECTORY 2012 RESOURCE CATEGORIES (OPTIONAL)

#### BUSINESS MEMBERS ONLY

**BUSINESS MEMBERS:** Check all boxes that apply for the 2012 *Business & Teacher Online Directory*. Listings are *free* with your business membership. Visit [WWW.DECORATIVEPAINTERS.ORG](http://WWW.DECORATIVEPAINTERS.ORG) to submit up to one-hundred-word description of your business and to select the categories that most appropriately describe it. These categories and descriptions will be added to the *Online Business & Teacher Directory 2012 Resource*.

- Author
- Distributor/Wholesaler
- Home Studio
- Manufacturer/Importer
- Publisher
- Retailer
- Teacher
- Travel-teacher
- Other

#### INDIVIDUAL MEMBERS ONLY

**INDIVIDUAL MEMBERS,** check all boxes that apply. LISTINGS ARE \$10 EACH PER YEAR.

- Author
- Teacher
- Travel-teacher
- Design and/or painting skills for hire

### 4 PAYMENT

MAKE CHECKS PAYABLE TO: SDP, 393 N. McLean Blvd., Wichita, KS 67203-5968. • For faster service, use MasterCard or VISA by calling (316) 269-9300 ext. 105, or fax application to (316) 269-9191 • Join online at [WWW.DECORATIVEPAINTERS.ORG](http://WWW.DECORATIVEPAINTERS.ORG).

TOTAL \_\_\_\_\_

VISA  MASTERCARD CARD NUMBER \_\_\_\_\_ EXPIRATION DATE \_\_\_\_\_

SIGNATURE \_\_\_\_\_ PHONE \_\_\_\_\_

YES! THIS IS A GIFT MEMBERSHIP FROM \_\_\_\_\_ MEMBERSHIP NO. \_\_\_\_\_

YOUR 2012 MEMBERSHIP CARD WILL ARRIVE WITH ISSUE NO. 1, 2012, OF THE DECORATIVE PAINTER.

Thank you for supporting the Society of Decorative Painters.

## Gateway Decorative Artists Membership Form

**Membership in the Chapter is OPEN ONLY to persons who are dues-paying members to SDP**

Name \_\_\_\_\_ New Member \_\_\_\_\_ Renewal \_\_\_\_\_

Address \_\_\_\_\_

City \_\_\_\_\_ State \_\_\_\_\_ Zip Code \_\_\_\_\_

Phone \_\_\_\_\_ Email \_\_\_\_\_

Birth Date \_\_\_\_\_ SDP Membership # \_\_\_\_\_ (include copy of SDP card)  
Member of other chapters \_\_\_\_\_

Check all that Apply:

Individual Member \_\_\_\_\_ Teacher \_\_\_\_\_ Business Member \_\_\_\_\_ Name of shop \_\_\_\_\_

Certification: MDA \_\_\_\_\_ CDA \_\_\_\_\_ TDA \_\_\_\_\_

Preferred Painting Medium: Oil \_\_\_\_\_ Acrylic \_\_\_\_\_ Watercolor \_\_\_\_\_ Other \_\_\_\_\_

What year did you start painting \_\_\_\_\_

Favorite Artists \_\_\_\_\_

**Annual Dues are \$20, payable by Dec. 31, 2012.**

Please make check payable to Gateway Decorative Artists  
Mail to: Jo Lynne Lair, 106 Cooper Ave., East Alton, IL 62024



Next Board Meeting: April 28

Newsletter Info Deadline: May 20

## Gateway Gazette

Sandra Reynolds  
Newsletter Editor

Contact Info:

[www.newsletter@gatewaydecorativeartists.com](http://www.newsletter@gatewaydecorativeartists.com)  
618 979-2409