

Gateway Gazette

www.gatewaydecorativeartists.com

Inside this issue:

Calendar	2
Presidents Message	3
Vice-President & Membership	4
Programs	5
Chapter Minutes	7
By-Laws Revisions	11
Gold Brush Winner	12

Refreshments

Your Board Members:

Debbie Finklang, Lorie Reece,
Jean Rogenhofer, Sandra Reynolds,
Barb Ogden, Donna Wessel,
Cheryll Wilburn

Mary Jo Kumer—Soda,
Gloria Falk—Centerpieces

Gateway Chapter Meeting

Sunday, February 10, 2013

Maryland Heights Community Center
2344 McKelvey Road, Maryland Heights, Mo.
314 738-2599

Meeting Starts at 1:00 p.m. Doors open at 12:00



Directions from I-270

Dorsett Rd. west
McKelvey Rd. right
Ameling Rd. right
McKelvey Rd. left

Our program will be a demo by Cindy Connoley. She will show us how to make jewelry from her woodsies. Along with the demo she will have packets and wood to sell. You can visit her shop on line at www.mylittlewoodshop2.etsy.com.



Board Members

President

Lorie Reece 314 971-0190
 president@gatewaydecorativeartists.com

Vice-President

Debbie Finklang 636 290-6102
 vicepresident@gatewaydecorativeartists.com

Program Chairman

Barbara Ogden 636 928-5503
 program@gatewaydecorativeartists.com

Membership Secretary & Publicity

Cheryll Wilburn 636 332-4548
 membership@gatewaydecorativeartists.com

Recording Secretary

Jean Rogenhofer 314 739-3493
 secretary@gatewaydecorativeartists.com

Treasurer

Donna Wessel 314 428-8226
 treasurer@gatewaydecorativeartists.com

Newsletter Editor

Sandra Reynolds 618 979-2409
 newsletter@gatewaydecorativeartists.com

Area Representatives

South County	Joan Love	314 842-7288
North County	Jean Lindsey	314 921-0425
Illinois	Lida Gillham	618 656-9294
West County	Maureen Wasserman	636 227-2843

If you have anything to pass on to the Chapter, such as news of an illness, congratulations, etc. contact an area rep or your Membership Chairman, Jo Lynne Lair.

Standing Committee Chairs 2013

Nominating Committee

Refreshments	Debbie Finklang
Gold Brush Award	Cheryll Wilburn
Librarian	Barb Ogden
Historian	Marilyn Hartnett
Ways and Means	Nancy Falk
Parliamentarian	

Special Committee Chairs

Christmas Party	Barb Ogden
Memory Box Program	Gloria Falk
	Mary Jo Kumer
Webmaster	Josée Laferriere

Chapter Schedule of Events

February 5 Memory Box Paint-In Lindell Bank

Feb. 10 Chapter Meeting Maryland Heights

Feb. 24-Mar. 1 Las Vegas Convention

March 5 Memory Box Paint-In Lindell Bank

April 2 Memory Box Paint-In Lindell Bank

April 14 Chapter Meeting Maryland Heights

May 13-18 SDP Convention St. Charles, IL

June 9 Chapter Meeting Maryland Heights

June 22-24 Tina Sue Norris Seminar Holiday Inn Express

September 8 Chapter Meeting Lindell Bank

September 13-15 Della Wetterman Seminar
 Holiday Inn Express-Earth City

October 4-6 Retreat Trout Lodge, MO

Join us on Feb. 5 to
 Paint Memory Boxes taught by
 Kay Vuichard at
 Lindell Bank in St. Peters, MO



News from your President

Happy New Year to All. Wishing you all health and happiness this coming year.



Hopefully everyone is rested from the holidays and have made some special memories. I myself was grateful the weather was nice and we didn't get our normal ice and freezing rain, even though I would have loved to have had a White Christmas!

I can't believe a year has come and gone. I want to thank everyone that has stepped up to the plate to help me adjust to my position in the Chapter. I also want to thank the other board members and chapter members who put so much time and effort making this chapter stay alive and going. I feel that everyone has worked extra hard this year to get the "Painting Word" out there. Thanks to everyone for all you do for the chapter. Everyone is important to us.

For those that did not attend the Christmas Party that Barb Ogden put together, you missed a good time. Food and drink were good along with the games, prizes, and most of all, each other's company. We also had installation of the officers that went off without a hitch!

I want to welcome our new members, which will be announced at the meeting, so we can all meet them. I also want to welcome our new board members, Cheryl Wilburn and Debbie Finklang. I look forward to working with you!

Once again as stated previously, please keep communication open with the Board. We are here to serve and listen. We will try to fulfill your wishes. We may not have the right answer or solution at the time, but we are here to work with you and not against you!

Can't wait to see everyone at the next meeting. In the meantime, stay warm, stay safe and keep painting!!

Hugs to all. Lorie

NEWS FROM YOUR VICE-PRESIDENT



Woo Hoo. 2013! Let the party begin! Party planning that is.

Each new year brings a new retreat with new painting projects, new Make It Take Its (MITIs), fun and frolic for all. I have always looked forward to the next retreat. This year we are going to do the planning a little differently, so I thought I'd better give you a heads up. The MITI and class projects will be submitted, voted on and unveiled at the same time. This allows the MITI teachers time to prep their projects.

I'd like to challenge those who haven't taught a class to submit a project. You can start small with a Make It Take It project or go for the full class. What better way to get your feet wet than with your painting friends!

The seasoned veterans can give pointers ahead of time and they have some very good advice. Believe me, I know. They helped me a ton on the Learn to Paint acrylic class.

Enough of my babbling. If you would like to submit a project, or two, please see me for a form and additional information. The dates for the 2013 Retreat are Oct. 4-6, so mark your calendars. Trout Lodge is absolutely beautiful in the fall. What better inspiration for painting. Bring a friend and join in on the fun.

If you have not already booked your room(s), make sure and tell them that you are with the Gateway Decorative Artists group to receive the discount. See you at the February meeting and get those creative thinking caps on.

Debbie Finklang, V.P.

Membership Chair News

Thank you for your confidence in voting me to be your Membership Chair.

I have tried to call those of you who had forgotten to rejoin.

Thank you for mailing your renewal checks to me so promptly after I had talked to you, so you would be in our calendar/directory. If I have forgotten someone, please send me your check as soon as possible, or give it to me at the February meeting. We have some wonderful seminars and activities being planned.

To help build our membership, I want to encourage you to bring a guest or two to our meeting, and to continue to make our guests feel welcome.

Our Membership Directory will be available at the February meeting. Additional directories will available for purchase. If you want your calendar/directory sent to you, please send me a SASE business envelope w/ \$.67 on it.

*** Please let me or a board member know about any member's illness, etc., so that I can send them a card.*

I would like to do a spring pin exchange for those interested. You will sign up at the Feb. meeting and bring the painted pin back to the Apr. meeting. I will draw names at the meeting for everyone participating and try to give you your name the same day.

I'm thinking about having a brown bag exchange at the June meeting. You would bring a project in a brown bag that you would like to have painted w/a pattern. The finished project would be returned at the Sept. meeting.

Cheryll Wilburn, Membership Chairperson



News from our Program Chair



Hope everyone's holidays were wonderful and you are ready to start 2013! We are still registering for Tina Sue Norris' Seminar. Stop by the table and take a look at the projects and sign up. The medium is colored pencils and the Saturday project is a good beginner.



Our second seminar is with Della Wetterman in September. I will bring her projects to the meeting so we can vote on which ones to paint. And, you will also be able to sign up on that Sunday.

There will be a handout for you to pick up as you register for the meeting. I have put together the Chapter policies for Seminars and Sharing Workshops. We have several new members, and it has been awhile since anything has been written down for you. Keep this with your Chapter materials so you can refer to it.

Our program will be a demo by Cindy Connoley. She will show us how to make jewelry from her woodsies. Along with the demo, she will have packets and wood to sell. You can visit her shop on line at:

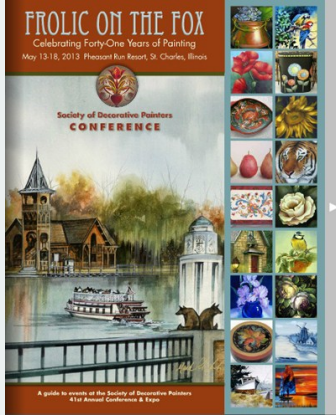
www.mylittlewoodshop2.etsy.com.

See you all on February 10.

Barb



Cindy's Woodsies



It's time to
make your

plans to attend Frolic on the Fox, SDP's 41st International Conference and Expo to be held in St. Charles, Ill., May 13-18, 2013! [Conference registration is now open.](#)

Have you looked through the [Conference Special](#) to pick your classes and plan your schedule? Available now at [decorativepainters.org](#), this is your guide to all things Conference, including class and event listings.

BIRTHDAY WISHES!

January-March Birthdays

Ellen Rohne—Jan. 1
 Judy Dodson—Jan. 7
 Vada Galvan—Jan 17
 Judy Mayo—Jan. 22
 Cheryll Wilburn—Jan. 24
 Kay Vuichard—Jan 29
 Donna Wessel—Feb. 7
 Mary Haynes—Feb 7
 Joyce Miller—Feb. 10
 Sandra Reynolds—Feb. 21
 Wanda Webb—Feb. 22
 Martha White—March 4
 Lou Ann Duryea—March 11

Paint –In at the Rendezvous Wine Café 11/21/2012

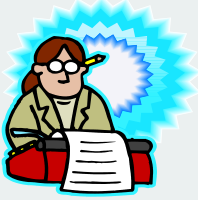


Gold Brush Award

I was absolutely flabbergasted"! There was NO clue in my mind about whom Donna was talking about until she mentioned "she was for the birds(one)" I started trying to think of people who might have a bird.

This is such a great honor. My heartfelt thanks to the person, or persons, who nominated me, and to the people on the committee who chose to present me with this award. I am so honored. I will always treasure the beautiful framed plaque and the necklace I received.

Cheryll Wilburn



GATEWAY DECORATIVE ARTISTS

Meeting Minutes – November 12, 2012

Lorie Reece called the meeting to order at 1:10 p.m. All board members were in attendance. Ginger German gave the invocation. Lorie thanked everyone for coming.

Lorie asked if there were any corrections to the September minutes as printed in the Newsletter. Hearing no corrections, the minutes are approved.

Lorie asked if there were any questions regarding the Treasurer's Report. Hearing no questions, the Treasurer's Report will be filed.

Lorie reminded everyone that dues for next year are due today if you want to be included in next year's directory. Also, be sure check your information so it can be correct in the directory.

Lorie and Mary Jo Kumer passed out the pins that were painted for the "pin pal" exchange.

Gloria Falk still had tickets available for the "opportunity of ownership" on the beautiful rooster chair that she painted and donated to help raise funds for the Ways and Means Committee. Tickets are \$1.00 or 6 for \$5.00. The drawing will take place today.

The current By-Laws and the proposed changes, as suggested by the By-Laws Committee, were printed in the November Newsletter. Donna Wessel read the current By-Laws and the proposed changes and the reasons the committee felt the changes were necessary.

The first one was Article VI, 3, Officers and their election: This would add term limits to an office. The committee suggested adding the following to this article: *"No officer may hold the same office for more than two (2) full terms. This will begin with the 2013 election."* Kay Vuichard made a motion to discuss this proposal. Barb Ogden seconded this. After this was discussed among the members, Ann Mohrman made a motion that we accept this proposal and add the term limits. Barb Ogden seconded this. A vote was then taken and 32 voted for this proposal and 12 voted against it. Motion passed.

The next was Article VI, 4, Officers and their election: The committee suggested adding the following sentence to this article. *"A member may only run for one office at a time."* Debbie Finklang made a motion to discuss this and Barb Ogden seconded it. After the discussion, Maureen Wasserman made a motion to vote for this proposal This was seconded by Liz McClintock. The voting was unanimous. Motion passed.

Article VII, 2c, Duties of Elected Officers, The Vice-President's duties shall be: The committee suggested adding the words, *"Retreat and"* to the sentence regarding the Vice-President's duties. Gloria Falk made a motion to discuss this, seconded by Kay Vuichard. After a brief discussion, Elizabeth Geers made a motion to accept this addition, seconded by Joan Love. Voting was unanimous. Motion passed.

Article VII, 5c, Duties of Elected Officers. The Membership Secretary's duties shall be: The committee suggested adding *"the"* to the sentence. Kay Vuichard made a motion to accept this proposal, seconded by Deb Finklang. Voting was unanimous.

Article VII, 6a, Duties of Elected Officers, The Treasurer's duties shall be: The committee suggested adding *"seven (7) years"* to the record keeping time limit. Maureen Wasserman made a motion to accept this proposal, seconded by Barb Ogden. Motion passed.

Article VII, 7a. Duties of Elected Officers, The Newsletter Editor's duties shall be: The committee suggested changing the wording "when e-mail is not available" to "when e-mail is not *an option*". Joan Love made a motion to accept this proposal, seconded by Joyce Miller. Motion passed.

Article VII, 7b, Duties of Elected Officers: The Newsletter Editor's duties shall be: The committee recommended adding the words "*electronically or*" to the sentence regarding sending information to members. Milly Johnson made a motion to accept this recommendation, seconded by Barb Ogden. Motion passed.

Article VIII, 2f, Executive Board, the duties of the Executive Board shall be: The committee recommended eliminating the word "*residing*" from the sentence. Jean Lindsey made a motion to accept this recommendation, seconded by Carol Rufkahr. Motion passed.

Article IX, 1a, Committees, Nominating Committee: The committee suggested that the time limit for keeping the ballots and tally sheets be kept by the President until after the "*installation of officers*". Also that the last sentence in that paragraph be deleted. Debbie Finklang made a motion to accept this proposal. Seconded by Jo Lair. Motion passed.

Article IX, 1b, Committees, Refreshment Committee: The committee recommended that we eliminate the last sentence regarding keeping records and receipts since the Treasurer keeps these. Ellen Rohne made a motion to accept this recommendation, seconded by Milly Johnson. Motion passed.

Article IX, 1d, Committees, Librarian: The committee suggested adding "*until the annual report has been submitted to the board*" to the sentence regarding keeping records and expenses. Jean Lindsey made a motion to accept this proposal, seconded by Joan Love. Motion passed.

Article IX, 1e, Committees, Historian: The committee suggested adding "*until the annual report has been submitted to the board*" to the sentence regarding the keeping of records and receipts. A motion was made to accept this proposal by Milly Johnson, seconded by Jean Lindsey. Motion approved.

Article X, 1, Amendments: The committee suggested adding the adjective "*the*" to the sentence. Jo Lair made a motion to approve this suggestion, seconded by Jean Lindsey. Motion approved.

Article XIII, 1, Absentee Voting: The committee suggested adding the words "*electronically or*" to the sentence regarding requesting an absentee ballot. Kay Vuichard made a motion to accept this proposal and Jim Lair seconded it. Motion passed.

Gloria Falk did the drawing for the winner of the "Rooster Chair" and Debbie Douglas was the lucky winner. She was an attendee of the Artists Holiday Boutique, hosted by Gloria.

Gloria mentioned that everyone should have a ballot for voting. She read the list of members that were running for the various offices and had them stand when she called their name. She asked if there were any other nominations from the floor, but there were none. The ballot listed the following: Vice President – Jim Lair and Debbie Finklang; Membership Chair – Jo Lair and Cheryl Wilburn; Recording Secretary – Jean Rogenhofer; Treasurer – Donna Wesel and Maureen Wasserman. Ballots were then collected by Ginger German, Jean Lindsey and Judy Mayo.

Jim Lair gave a report on Retreat. He thanked Marilyn McDonald, Karen Steiner and Ann Mohrman for the great entertainment. Reservations have been made at the YMCA Trout Lodge for October 4th, 5th and 6th for 2013, and October 10th, 11th and 12th for 2014.

Barb Ogden gave a report on Mark's Seminar. He was a great teacher, a lot of fun. Everyone had a good time and was happy with their paintings. During lunch, Mark did a painting every day and then had a drawing to give it away. He also donated each of his teaching paintings to us for our club. We had these framed and will have a raffle on his beautiful paintings next year.

Tina Sue Norris is scheduled for a colored pencil seminar on June 22nd, 23rd and 24th. Pictures of her projects are on display. The Cardinal will be the first day, the Gold Finch on the second day and the Butterflies on the last day. The cost is \$55.00/day, plus supplies. A list of supplies will be given to you when you sign up. All the projects will be done on suede board, which can be purchased from Tina. The seminar will be held at the Holiday Inn Express.

The Christmas Party will be on Sunday, December 2nd at Yacovelli's. The cost is \$20.00. The sign on the outside of the restaurant is "Yac's". We must have the final count by November 18th. As in previous years, there will be an ornament exchange for those who wish to participate. .

We do not have a date yet for the Della Wetterman Seminar. Barb is still waiting to hear from Della.

The program after the meeting today is a Zen tangle Ornament taught by Katie Waldron. The cost is \$2.50.

Several people have been asking when Mark Polomchak will be back. Barb will contact Mark to see if we can get him to do another seminar in 2014.

Mary Jo Kumer showed the various projects brought in for Show 'n Tell. She also showed the oil painting that Jo Lair will be teaching at the Maryland Heights Center next month. Mary Jo mentioned that as of Nov. 1, 533 Memory Boxes have been mailed this year. We have Memory Boxes available for those who want to take home and paint. Mary Jo thanked everyone for all the Memory Boxes on display at today's meeting. The next Memory Box Paint-in will be on December 5th and she showed the box that Barb Ogden will be teaching.

Jo Lair reminded everyone that membership dues are now due for next year and to check their address information to make sure it is correct for our directory. We have 44 members present today and one guest, Jackie Kohler. Nancy Falk introduced her sister Carol Smith as she became a new member today. Door prizes were won by Kay Vuichard, Karen Steiner and Peggy Araki. Drawings for the table centerpieces took place at each table.

Sandra Reynolds advised that the next Newsletter deadline will be January 15th. Also, at the February meeting, we will be starting our 50/50 drawing.

Donna Wessel mentioned that her report on the auction proceeds was listed in the Newsletter. A total of \$379.75 was made, which will go to the Memory Box Program to help defray the costs of shipping. Donna invited everyone to look at a display board she had made that showed pictures of the recent art display she had at a local library. Donna reminded everyone about the Gold Brush Award and their last chance to nominate someone for this year's award.

Maureen Wasserman thanked everyone for all the nice cards she received after her father passed away.

Debbie Finklang thanked all those who provided the great Thanksgiving lunch today. She said that she needs volunteers for next year's meeting refreshments. The Board took February, Vada's group took April, Karen Steiner's group took June, Ellen Rhone and Cheryll Wilburn and friends took September, and the South County group took November.

Nancy Falk gave a report on the Ways and Means Committee. They will be starting the "Learn to Paint" Classes in January. They also have some "wine" classes scheduled. If anyone has any ideas for them, please let her or someone on the committee know.

Mary Jo Kumer made a motion to adjourn the meeting, which was seconded by Jim Lair. The meeting adjourned at 2:50 p.m.

Respectfully submitted,
Jean Rogenhofer
Recording Secretary

NOTE: After the ballots were counted, the election results for 2013 were, as follows:

Vice President -----Debbie Finklang
Membership Secretary -----Cheryll Wilburn
Recording Secretary -----Jean Rogenhofer
Treasurer -----Donna Wessel

GATEWAY DECORATIVE ARTISTS Christmas Party - December 2, 2012

This year, the Gateway Decorative Artists Christmas Party was held on Sunday, December 2nd at Yacovelli's Restaurant, beginning at 12:30 p.m.

Barb Ogden welcomed everyone and Vada Galvan gave the opening prayer. The Christmas Party Committee made cute sleigh favors that were placed at each place setting. Dinner was buffet style, which included fried chicken, roast pork loin, oven roasted potatoes, broccoli and cauliflower casserole, mixed green salad, dinner rolls, and coffee or tea. Dessert was chocolate cake with white icing.

A few word games were played and prizes were given out to the winners.

Gloria Falk officiated the Installation of the 2013 officers. Each officer was given a candle to light when they were installed. The following Officers were installed for 2013: President - Lorie Reece, Vice President - Debbie Finklang, (in Debbie's absence, Marilyn Harnett stood in for her), Membership Secretary - Cheryll Wilburn, Recording Secretary - Jean Rogenhofer, Treasurer - Donna Wessel, and Newsletter Editor - Sandra Reynolds.

Donna Wessel, who was last year's Gold Brush Recipient, presented the Gold Brush Award for this year to Cheryll Wilburn.

Baskets with the ornaments brought for the ornament exchange were passed around to those who brought an ornament. After everyone received an ornament, they were shown and told who the ornament was from.

After the party was over, hugs and Christmas wishes were given and congratulations were extended to Cheryll for this year's Gold Brush Recipient.

Respectfully submitted,
Jean Rogenhofer,
Recording Secretary

By-Law Changes

2012 Bylaw Committee Report – Following are the Bylaw revisions that were passed unanimously at the November 11, 2012 Chapter meeting. The changes are indicated in “red” to help spotlight the changes to the Bylaws that are being incorporated into the Standing Rules and Bylaws section of the 2013 calendar/directory that will be available to members at the February meeting.

Article VI,3, Officers and their election

The term of office shall be two years, commencing January 1 through December 31. President, Program Chairman, Newsletter Editor will be elected in odd numbered years. Vice-President, Membership Secretary, Recording Secretary and Treasurer will be elected in even numbered years. This will begin with the 2007 election. An officer may resign their term after one full year and a new officer will be elected for the rest of the term. **No officer may hold the same office for more than two (2) consecutive full terms. This will begin with the 2013 election.**

Article VI,4, Officers and their election

Nominations shall normally take place at the September and the November meetings, following the report of the Nominating Committee, as provided in Article IX, 1a. Nominations from the floor for each office shall be accepted at each of these meetings. **A member may only run for one office at a time.** A plurality vote (largest number of votes given to one candidate) is required to elect if there is more than one candidate for office. Voting shall be by ballot.

Article VII,2c, Duties of Elected Officers – The Vice-President’s duties shall be:

Be chairman of **Retreat and** any special event or program designated by the board and keep accurate records of each for no less than the prior three (3) years.

Article VII,5c, Duties of Elected Officers – The Membership Secretary’s duties shall be:

Compile and update **the** annual membership directory. Print copies to be distributed at the first chapter meeting of the new year.

Article VII,6a, Duties of Elected Officers – The Treasurer’s duties shall be:

Custodian of Chapter funds. To disperse Chapter funds; to keep accurate records of all receipts and disbursements; and file all bills as proof of money paid, for not less than **seven (7)** years.

Article VII,7a, Duties of Elected Officers – The Newsletter Editor’s duties shall be:

Ensure Newsletter is published and delivered at least 10 days prior to established meetings but not more than fourteen (14) days. The delivery of said newsletter will be through email and only sent USPS when email is not **an option.**

Article VII,7b Duties of Elected Officers – The Newsletter Editor’s duties shall be:

Provide to members, **electronically or** via fliers, information relative to special events, seminars, etc.

Article VIII,2f, Executive Board – The duties of the Executive Board shall be:

The Executive Board may, at their discretion, from time to time choose to subsidize, partially or in full, an educational activity for the benefit of current chapter members, or the public in general, utilizing available funds in the Chapter’s checking or savings accounts.

(Eliminated the word “residing”)

Article IX,1a, Committees, Nominating Committee

This committee shall consist of the appointed chair and any additional persons needed who shall prepare a slate for the election of officers. The Nominating Chair shall be responsible for printing and issuing ballots. Nominees must be members and meet the qualifications as stated in Article VI,2 and have given prior consent to the Nominating Committee. The Chair is responsible for checking with the Membership Secretary to verify that nominees are eligible members. The Chair will prepare a list of eligible voting members and prepare a sign-in list for voter sign-in the day of the election All ballots and tally sheets shall be given to the current President immediately following the voting to be held until **after the installation of officers. (Also eliminated the last sentence)**

Article IX,1b, Committees, Refreshment Committee

Participants on this committee will come from the general membership. This Committee will be responsible for procuring refreshments and decorations for the meetings, under budgetary guidelines as established by the board. **(Eliminated the last sentence)**

Article IX,1d, Committees, Librarian

Shall be responsible for the preservation of all patterns, books and videos. These materials will be brought to the Chapter meetings enabling the members to rent any of the above once selection has been made from the library listing on the website. Purchase of new materials as well as discarding old, except for the patterns from the St. Louis National Convention, shall be at the discretion of the Librarian with Board approval. Keep accurate records of committee expenditures and receipts **until the annual report has been submitted to the board.**

Article IX,1e, Committees, Historian

The purpose of this position is to chronicle the history of events within the chapter as well as the Annual Conference of SDP. Be responsible for taking or obtaining photos of these events, when possible, and keeping our scrapbooks updated. Keep accurate records of committee expenditures and receipts **until the annual report has been submitted to the board.**

Article X,1, Amendments

These Bylaws may be altered or changed by a two-thirds (2/3) vote of the members present at a meeting at which a quorum is present, provided that the proposed changes have been presented to the members through the chapters newsletter at least 10 days prior to the meeting at which **the** voting takes place.

Article XIII,1, Absentee Voting An absentee ballot listing the slate of nominees submitted by the Nominating Committee, with a space for eligible write-in candidates may be requested **electronically or** in writing from the Nominating Chair. The ballot shall be issued by the Nominating Chair or one of the committee members to a confirmed eligible voting member.



Gold Brush Award 2012 Gateway Decorative Artists Cheryll Wilburn

This year's recipient is a quiet soft-spoken lady whose long standing service and commitment to the chapter and decorative painting began almost 20 years ago. Not content to just pay dues and attend meetings, she jumped into action practically from day one. Initially she was a very active volunteer at the 1993 Convention held here in St. Louis setting the stage for volunteering at a number of national conventions around the country over the years in a variety of positions. This tireless worker has served on the board; chaired a committee for several years in succession; and supported chapter seminars and workshops too numerous to list. Her list of committee service includes painting name tags for conference teachers several years running; participating in the early learn to paint classes; helping to man the chapter table at the Chapter's Marketplace at conference; setting up a promotional poster at her local library; creating a Paint for Freedom Card; painting luggage tags for conference. She is a dedicated supporter of the Memory Box Program including taking part in several whirlwind marathon memory box paint-ins resulting in completed boxes numbering in triple digits. She is personally responsible for introducing us to a women's shelter in need of a helping hand as well as supporting all of Gateway's charities, auction fund-raisers and community service projects. She has taught children to paint both academically and in her neighborhood as recently as this past summer. Not content to sit back and relax she continues to accept new challenges to reach out to teach the art of decorative painting to beginners and to once again serve on the Board.

On the personal side, she is a mother, a grandmother and a lover of animals, particularly of the feline variety. It would not be facetious of me to say she's also for the birds or at least one in particular. I understand he's even been known to talk back on occasion. She's the kind of person who would give you the shirt off her back, whether you needed it or not. Wait, she actually did that a couple months ago -- and not one, but three shirts. Gateway's members will ultimately benefit from this generosity when they have an opportunity to purchase one at a deeply discounted price. I can also tell you that she's a great conference roommate and traveling companion.

She has a long standing painting commitment one day a week. She is passionate about painting and trying to complete projects, but sometimes she just has to put down the brush long enough to take a mid-afternoon chocolate break. While shuffling isn't her forte, she does enjoy playing a spirited game of cards now and then. She seems to have a real knack for catching other players with red threes in their foot when she goes out.

This year's recipient is both worthy and deserving of recognition. I am very pleased and honored to present this year's Gold Brush Award to our very own, Cheryll Wilburn.

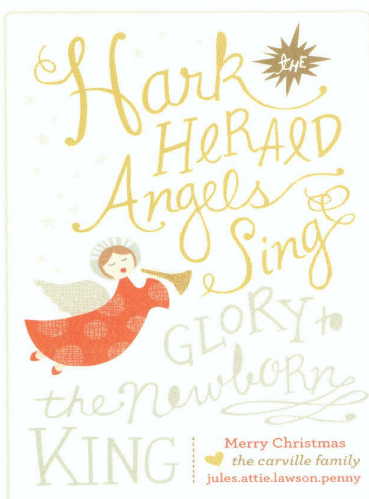


home sweet NOLA

Dear Ms. Wessel,

I am writing to thank you and your chapter for the thoughtfully painted memory box that I received when I lost my baby, Alice Ferriday, on November 10, 2012. Leaving the hospital without my baby girl was very difficult, but it would have been unbearable without the memory box that holds her blanket, cards and pictures. I've enclosed our Christmas card with a picture of Alice's big sisters. Thanks again. Sincerely,

Attie Corville



One of many Thank You's from one of our Memory Box recipients

Gateway Decorative Artists was #3 in the Nation of groups supplying Memory Boxes to Hospitals with a Total of 645 boxes.

Thanks to all who participated!

BRAG PAGE

LORIE REECE'S ZOO BRAG

I only have one grandchild and all my children are grown and none of them do anything exciting so I am going to talk about my 4 legged children.

These are my two new additions of 2012 and I wouldn't change it for the world.

The dog was a surprise from my husband early December. The breed is a French Mastiff or as you probably would know it, Hootch, from Turner and Hootch, the movie with Tom Hanks. Believe me, he acts just like the dog in the movie. I think my husband bit off more than I can chew. His name is TANK since my husband pulls a Tanker and he was breed in Mississippi. He brought him home in his 18 Wheeler. He has grown 15 pounds in 4 weeks and will eventually be about 165 pounds. About what I weigh! LOL!! He has been riding with my husband and will until he can't fit in the truck, which is sooner than not. My other rescue, Roxie the 9 year old pit bull has not really warmed up to him yet.

The other is my rescue cat, BC. This is short for Black Cat. My husband named her. Not me. I call her Kiki! She likes that better than BC!

She was a feral cat that was delivered in our shed. I took her and her 3 siblings in to get them spayed

and neutered along with rabies shots and she was the only one that stayed around the house. We felt sorry for her outside as she was always meowing at us, so we brought her in. She has settled in as if she was meant to be Queen! I have never had a cat with the energy and antics she does. Her ear was clipped by the vet to show that she had been spayed. They do this with feral cats so the animal control will leave them alone. When they see the clipped ear they know they have been spayed or neutered. I would never have had this done if I knew I was keeping her.

Along with Tank, BC alias Kiki, and Roxie, we have Myrtle the box turtle that is approx. 60 years old that I have had since I was 14 along with 2 African side neck mud turtles, Frick and Frack, who are 5 years old and live in a 100 gallon tank. They are not exciting at all. Next in the Reece Zoo is Studley, the love bird that is 15 years old and hateful, loves to bite and talk but no love whatsoever, Rainbow the 3 year old Siamese fish and two other 20 gallon fish tanks.

Welcome to
the ZOO!



A Special Brag for Our Ways & Means Team

It's been a long winter already and our Ways and Means Team has been doing double duty to bring the Joy of Painting to groups of people in the "Learn to Paint" classes held at the Holiday Inn Express in Maryland Heights on 3 Saturdays in a row this Month.

They put in all of the work of preparing the projects, typing up instructions, putting together gift bags, hauling in all of the materials, setting up the rooms, and student confirmations for 25 students + per class with 5 classes

BIG THANK YOU TO:

*Gloria Falk, Nancy Falk,
Cheryll Wilburn, Donna Wessel,
and Debbie Finklang*

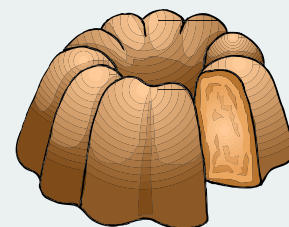
Submitted by Sandra Reynolds

I went in to help with classes and saw all of the hard work first hand.

Jean Lindsey's Cream Cheese Pound Cake

3 sticks butter, 3 cups sugar, 1/2 teaspoon salt, 8 oz. cream cheese, 6 large eggs, 1 1/2 teaspoon vanilla extract, 3 cups sifted cake flour

Cream butter, cream cheese and sugar until light and fluffy. Add salt and vanilla. Add eggs one at a time and beat after each addition. Add flour, dividing into four additions. Pour into 19" round tube cake pan. Grease only the bottom of the pan for a smooth even cake. Bake at 325 degrees for 1-1/2 hours or until done.



GATEWAY DECORATIVE ARTISTS NOW HAS A FACEBOOK PAGE

To view our site and see what's going on on an up-to-date basis you can Connect on line by typing in

www.facebook.com/GatewayDecorativeArtists

We need members to click on the LIKE tab to help show your support for our site. You can invite your Facebook friends to take a look at our site so they can see all of the great things that we do and possibly become involved in.

Log onto our Facebook site using the web address above to see what's going on and click LIKE on different pictures and posts to help bring up our LIKE total # so that we can get feedback on our site direct from Facebook. You don't have to be a member of Facebook to view our site.



March 5 Memory Box Paint-In With Ginger German



50/50 Drawing

We will have tickets available at the February Meeting For our 50/50 drawing To win 50% of the Jackpot Split between 2 winners \$1 per ticket, or 6 for \$5 Tickets available at the Board Table



Thank You!! Thank You!! Thank You!!
To our Memory Box Painters.

Ginger German; Marilyn Hartnett; Marilyn McDonald;

Karen Steiner and last but not least Donna Wessel

These gals came through for us in a pinch.
and the story goes.....

DePaul Hospital had someone new trying to find out where the memory boxes came from (the lady normally in charge was on maternity leave). She put a request out for boxes on the MB website. I happen to notice that MO -63043 was listed. After contacting Brenda (the gal in charge of disbursing the hospitals needs) I was assured it was DePaul. I told her I would try to round up boxes in our area and take care of that hospital. That is when I sent a note out and within a couple of hours I had a response from these ladies that they had boxes already completed and ready to go. Now they just had to be gathered up and delivered. Again, Ginger and her husband Jim, to the rescue. Donna Wessel was kind enough to drop them off on her way home the next day from the Learn to Paint event.

All I had to do now was let Brenda know that the boxes were delivered and that hospital was taken care of. Thank you also goes to Joan Love, who offered to help...but we had the number the hospital needed plus some. The new girl now knows to contact myself or Mary Jo Kumer to have any requests filled.

WE LIKE TO TAKE CARE OF OUR LOCAL HOSPITALS.

Gloria Falk

“Learn to Paint” Program News

By the time you are reading this, the committee will have completed all 5 classes of the LEARN TO PAINT program held at the Holiday Inn Express in Earth City (Maryland Heights).

We would call this venture a definite success in that we received a lot of sign ups for the classes and some are definitely interested in moving onward with the art form. We had at least 25 registered in each of the classes. On paint day, a few were missing because of illness or some other meeting that came up for the participant, but those that were there were enthusiastically excited about trying something new.

Registered attendees consisted of men, women and young adults. We had a 13 yr. old who loves to do Bob Ross style painting, a 14 yr. old that does charcoal drawings, a 16 yr. old and 22 yr. old sisters who love to do art in any form.

We gave them each a “Goody Bag” which consisted of a Decorative Painter; a painting book; Gateway and SDP tri-folds; SDP Flyer for the Chicago conference; an invitation to our February 10 chapter meeting; a list of teachers in the area that responded to my request for information on their classes and a Charm from the '93 St. Louis convention.

The teachers did a terrific job in keeping the enthusiasm flowing nicely. Our mission behind these classes is to stimulate an interest in Decorative Painting and gain membership for our Chapter. If you would like more information on how to do this in YOUR area, please feel free to contact any one of us.



Nancy Falk teaching a Calla Lily on 1/19/13



The Wine Glass Group Class on 1/26

Learn to Paint Teachers

Notebook - Debbie Finklang, Butterfly-Donna Wessel,
Calla Lily-Nancy Falk, Watercolor Forest-Cheryll Wilburn,
Wine Glass-Gloria Falk

2013 Installation of Gateway Decorative Artists Officers



Cheryll Wilburn receiving the 2013 Gold Brush Award from Donna Wessel



**A GOOD TIME
WAS
HAD BY ALL AT
OUR HOLIDAY
LUNCHEON!**



Mark Polomchak Watercolor Seminar

11/03/2012



GREAT ADVERTISING OPPORTUNITIES

Ad	Size	Members		Non-Members	
		issue	year	issue	year
Full Page	8 1/4 X 10 3/4	\$ 10.50	\$ 50.00	\$ 13.25	\$ 62.50
Half Page	8 1/4 X 5 1/4	\$ 8.00	\$ 37.00	\$ 10.00	\$ 46.25
Quarter Page	4 X 5 1/4	\$ 5.50	\$ 25.00	\$ 6.50	\$ 31.25
Business card	4 X 2 1/2	\$ 3.00	\$ 12.50	\$ 3.75	\$ 15.50

Personal messages are \$.05/word

ALL ADS MUST BE PAID FOR IN ADVANCE OF PUBLICATION

Ads should be camera ready, which means typed, artwork, completed and ready to print. Gateway Gazette is good advertising for those wishing to advertise their business, shop, classes, wood, painting supplies or other services.

Contact: Sandra Reynolds at 618-979-2409 or newsletter@gatewaydecorativeartists.com for more information.

Charity Corner

TURNING POINT WOMEN'S SHELTER

Emergency Shelter gives assistance to those suffering from domestic violence and sexual assault. They offer crisis advocacy and peer counseling, assist victims in obtaining an Order of Protection from the abuser, and dealing with the Criminal Justice System. They help women gain access to available legal services, social service agencies, and programs that provide other types of needed help. Turning Point serves Franklin, Gasconade, Lincoln, Montgomery and Warren counties. Their location is confidential..

Items Needed At Turning

We would like to thank everyone for helping and thinking of us.

Items greatly needed are:

Toilet Paper, paper towels, scouring pads for dishes, dog food (small dogs),
CLEANING PRODUCTS, Towels, wash cloths, Dish
 towels, dish cloths, tools (hammer, screw driver, etc.)

Thank you again so much,
 Turning Point Staff

Be sure to tag your donation with the name of the shelter you want to give your donation to. Thanks!

Pets-A-Lone-Sanctuary (PALS)
 4287 Hwy 47 West Hawk Point, MO 63349
 P.O. Box 462 Troy, MO 63379
 636-338-1818

**We are in dire need
 of the following:**

**BLEACH
 PAPER TOWELS
 30 GALLON TRASH BAGS**

**TIDY CAT LITTER OR ANY LOW
 DUST LITTER**

LAUNDRY DETERGENT (HE KIND)

Riverbend Humane Society

Their needs right now are:

Dry dog food

Dry cat food

Cat litter

Cat toys & scratching posts
 and perches

Food and water dishes

Bleach (for cleaning and disinfecting)

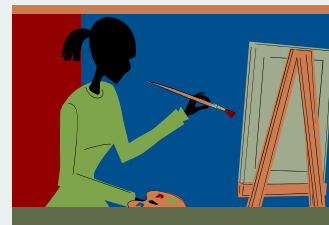
Blankets and towels



BOOKS - BOOKS - BOOKS

The USO can still use books. They MUST be paperback (no hardback). Please remember when filling out the donation log book.....even if the book is new you have to claim used price (\$1.50 - \$2.00).

Painting Tips & Tricks



Acrylic Paints:

Since acrylic paints don't like hot weather, just add ice cubes to your water basin. If you are using a Sta-Wet Palette, add ice water to the sponge under the palette paper. Keeping your paint cold helps the paint flow and prevents it from drying so fast and becoming sticky or skinning over. -- Plaid, Ent.

Painting small items:

To paint small items, attach them to cardboard with a piece of masking tape rolled over to form a circle, this will secure them and the cardboard allows you to have something to hold onto without getting paint all over your hands.

Another excellent way to paint small items -- use contact paper. I saw the technique on a TV craft show and I use it -- it works great!

Tracing Designs:

To keep your original pattern clean, when applying your pattern to your surface, position your pattern, tape in place with masking tape, place transfer paper under your pattern and then lay a piece of wax paper over the top. You can use a ballpoint pen or stylus to transfer the lines to your surface. If the phone should ring, or the kids need your help, When you come back you won't have to worry about where you left off with your tracing job, the lines will show up white on the wax paper. (Submitted by Gloria Falk, O'Fallon, MO)

Another trick for tracing designs:

Some of us use our plain paper, top loading fax-copier. We put the tracing paper in the top along with the regular paper as a backing. Put the design in the fax-copier and press copy. The design transfers onto the tracing paper perfectly. (This hint came from the Siskiyou Chapter in Oregon).

Removing Paint from the edges of your design:

A Magic Rub pencil eraser works great for erasing those over-run lines, when floating or basecoating. Wet the eraser in water, dab off slightly and then using a light touch gently work off the dried paint. Wipe the paint off of the eraser and re-dampen as needed. Be careful not to rub too hard in one spot, as it can remove your original basecoat color also. This method does NOT work well on a stained surface. (Submitted by Gloria Falk, O'Fallon, MO.)

Breaking fingernails opening paint bottles?

Keep a small can/bottle opener with your paint supplies. When you open a bottle of paint, use the blunt end of the can opener. It will save those expensive manicures. (This hint came from the Siskiyou Chapter in Oregon.)

Removing the plastic wrap on the paint bottle caps:

Hold the bottle in one hand and the cap in the other. Turn and pull on the cap as if you were going to "tighten" the cap. The plastic wrap will slip right off. (Submitted by Gloria Falk, O'Fallon, MO)

Avoid wet palette mildew:

Keep copper pennies under the sponge of your wet palette. The copper is a mildew inhibitor and will keep your sponge fresh and mildew free. (This hint came from the Siskiyou Chapter in Oregon.)

Another mildew preventative is to use distilled water to dampen the sponge and paper. (Submitted by Gloria Falk)

Bean bag work:

When painting fine line work, if you place your hand on a bean bag it will hold your hand steady and make it easier to get straight lines. (This idea came from the Siskiyou Chapter in Oregon).



Society of Decorative Painters

2013 MEMBERSHIP FORM

1 MEMBER OPTIONS PLEASE CHECK APPROPRIATE BOXES

FOR FASTER SERVICE, pay online at WWW.DECORATIVEPAINTERS.ORG.

UNITED STATES

\$50 INDIVIDUAL (\$55 after 12/1/12)

\$80 BUSINESS (\$85 after 12/1/12)

\$30 HOUSEHOLD (\$35 after 12/1/12)*

Check this box if you wish to pay for 2014 membership also.

INTERNATIONAL (U.S. FUNDS)

\$80 INDIVIDUAL (\$85 after 12/1/12)

\$50 ONLINE INDIVIDUAL (\$55 after 12/1/12) †

\$30 HOUSEHOLD (\$35 after 12/1/12)*

\$110 BUSINESS (\$115 after 12/1/12)

\$80 ONLINE BUSINESS (\$85 after 12/1/12) †

* HOUSEHOLD MEMBERSHIP FOR U.S. AND INTERNATIONAL: This type of membership is for an additional member sharing the same address as an Individual or Business member. No printed *Decorative Painter* magazines will be mailed to you.

† ONLINE INTERNATIONAL MEMBERSHIPS: You will receive the magazine in its online form only. If selecting this option, no printed *Decorative Painter* magazines will be mailed to you.

2 ONLINE 2013 BUSINESS AND TEACHER DIRECTORY

BUSINESS MEMBERS: Check all boxes that apply. Listings are FREE with your business membership.

Visit www.sdcosonlinemembers.org to submit up to one-hundred-word description of your business.

INDIVIDUAL MEMBERS: Check all boxes that apply. Listings are \$10 each per year.

AUTHOR

DESIGNS AND/OR PAINTING SKILLS FOR HIRE

DISTRIBUTOR/WHOLESALE

HOME STUDIO

MANUFACTURER/IMPORTER

PUBLISHER

RETAILER

TEACHER

TRAVEL-TEACHER

SECURE SDP'S FUTURE Donate Now!

\$2.00 \$5.00

\$10.00 \$25.00

\$50.00 \$ _____

Make checks payable to SDP.

3 MEMBER PROFILE (Please Print)

NAME _____ MEMBER NO. (If Renewal) _____

HOUSEHOLD MEMBER NAME _____ MEMBER NO. (If Renewal) _____

BUSINESS NAME _____

MAILING ADDRESS _____

CITY _____ STATE/PROV. _____ ZIP/POSTAL CODE _____ COUNTRY _____

EMAIL _____ WEBSITE _____

HOME PHONE (____) _____ CELL PHONE (____) _____ FAX (____) _____

I WOULD LIKE TO GIVE \$2 \$5 \$10 OR \$ _____ to the SDP Foundation, which provides scholarships to members and supports other SDP initiatives.

4 PAYMENT INFORMATION CHECK OR MONEY ORDER IN U.S. FUNDS ONLY.

Check Money Order CREDIT CARD: VISA MASTERCARD TOTAL _____

CARD NUMBER _____ EXPIRATION DATE _____

SIGNATURE _____

YES! This is a gift membership from _____ MEMBER NO. _____

MAKE CHECKS PAYABLE TO: SDP, 393 N. McLean Blvd., Wichita, KS 67203-5968. FOR MasterCard or VISA payment call (316) 268-9300 ext. 105, OR fax membership form to (316) 268-9191

IMPORTANT

Membership year is Jan. 1 to Dec. 31, 2013. If you join at any time of the year, you will receive the back issues and get all the applicable benefits from months past in that year. Payments postmarked after Dec. 1, 2012, require an additional \$5 late fee. This does not apply to new members or those who were not members in 2011 and 2012. YOUR 2013 MEMBERSHIP CARD WILL ARRIVE WITH ISSUE NO. 1, 2013, OF THE *DECORATIVE PAINTER*.

Thank you for supporting the Society of Decorative Painters.

393 N. McLean Blvd., Wichita, KS 67203-5968 • 316-268-9300 Fax: 316-268-9191 • WWW.DECORATIVEPAINTERS.ORG

CUT ALONG THIS LINE

Gateway Decorative Artists Membership Form

Membership in the Chapter is OPEN ONLY to persons who are dues-paying members to SDP

Name _____ New Member _____ Renewal _____

Address _____

City _____ State _____ Zip Code _____

Phone _____ Email _____

Birth Date _____ SDP Membership # _____ (include copy of SDP card)
Member of other chapters _____

Check all that Apply:

Individual Member _____ Teacher _____ Business Member _____ Name of shop _____

Certification: MDA _____ CDA _____ TDA _____

Preferred Painting Medium: Oil _____ Acrylic _____ Watercolor _____ Other _____

What year did you start painting _____

Favorite Artists _____

Annual Dues are \$20, payable by Dec. 31, 2013.

Please make check payable to Gateway Decorative Artists

Mail to: Cheryl Wilburn, 410 English Manor Drive, Wentzville, Mo. 63385



Gateway Gazette

Sandra Reynolds
Newsletter Editor

Contact Info:

www.newsletter@gatewaydecorativeartists.com
618 979-2409