

Gateway Gazette

www.gatewaydecorativeartists.com
www.facebook.com/GatewayDecorativeArtists

Inside this issue:

Calendar	2
Presidents Message	3
Vice-President Chair	4
Programs	5
Membership Chair	8
Meeting Minutes	9
Nominations	12
Gold Brush	15

Refreshments

Ellen Rohne, Lovella Mauer,
Liz McClintock, Jean Lindsey
and Linda Lewis

Mary Jo Kumer—Soda

THANK YOU LADIES!!

Gateway Chapter Meeting

Sunday, September 22, 2013

Maryland Heights Community Center
2344 McKelvey Road, Maryland Heights, Mo.
314 738-2599

Meeting Starts at 1:00 p.m.
Doors open at 12:00 p.m.



Directions from I-270

Dorsett Rd. west
McKelvey Rd. right
Ameling Rd. right
McKelvey Rd. left



Join us after
the meeting for
a demo from
Cheryl Tefft on
art calligraphy
and hands on
experience. See
page 5 for
supplies and
more info.

Devon

Delightful

Even

Valued

On the ball

Not just another
pretty face

Chapter Schedule of Events

President

Lorie Reece 314 971-0190
president@gatewaydecorativeartists.com

Vice-President

Debbie Finklang 636 290-6102
vicepresident@gatewaydecorativeartists.com

Program Chairman

Barbara Ogden 636 928-5503
program@gatewaydecorativeartists.com

Membership Secretary & Publicity

Cheryll Wilburn 636 332-4548
membership@gatewaydecorativeartists.com

Recording Secretary

Jean Rogenhofer 314 739-3493
secretary@gatewaydecorativeartists.com

Treasurer

Donna Wessel 314 428-8226
treasurer@gatewaydecorativeartists.com

Newsletter Editor

Sandra Reynolds 618 979-2409
newsletter@gatewaydecorativeartists.com

September 10 Memory Box Paint-In Lindell Bank

September 22 Chapter Meeting Maryland Heights

Oct. 1 Memory Box Paint-In Lindell Bank

October 4-6 Retreat Trout Lodge, MO

October 19 Learn to Paint Holiday Inn Express

October 26 Sharing Workshop with Barb Ogden

November 10 Chapter Meeting Maryland Heights

December Christmas Party

Dec. 3 Memory Box Paint-In Lindell Bank

January 12 New Board Meeting

Feb. 9/2014 Chapter Meeting

May 17, 18, 19 Mark Polomchak Water Color Seminar

Sept. 26, 27, 28 Sherry Nelson Seminar

Area Representatives

South County Joan Love 314 842-7288
North County Jean Lindsey 314 921-0425
Illinois Lida Gillham 618 656-9294
West County Maureen Wasserman
636 227-2843

If you have anything to pass on to the Chapter, such as news of an illness, congratulations, etc. contact an area rep or your Membership Chairman, Cheryll Wilburn

Standing Committee Chairs 2013

Nominating Committee Jean Lindsey
Refreshments Bonnie Heggeman
Jackie Fowler
Gold Brush Award Cheryll Wilburn
Librarian Barb Ogden
Historian Marilyn Hartnett
Ways and Means Gloria Falk
Parliamentarian Liz McClintock

Special Committee Chairs

Christmas Party Barb Ogden
Memory Box Program Gloria Falk
Mary Jo Kumer
Webmaster Josée Laferriere

**Memory Box Paint-In with
Joan Love on September 10 at the
Lindell Bank in St. Peters.
Come and paint with us.**



News from your President



Hi Members!

I hope everyone has had and is still having a great summer. What a toll the weather has taken on everything and everyone. I know my gardens took a beating but they are starting to come back with the cooler weather, which is still HOT to me. I guess the great news is that I for one have stayed inside and painted!

I have been told that we have low participation for our retreat this year. I hope we are missing a few that have just not signed up yet. Please let Debbie know before the meeting if you will be participating. We have a lot of great teachers that are taking the time to teach their projects and we would like to make it worth their while to do so. It is hard to do when there are not enough members signed up. The teachers also need to prepare their packets and paint their surfaces. This can be time consuming and only fair that they know in plenty of time.

I know you cannot make everyone happy, but Trout Lodge is a wonderful place. They have put us on the same floor as the painting rooms and there are not many children there as we have moved away from Halloween. The rooms for painting have the best light and scenery that you could ask for. The rooms include the food, they have added more phone towers so you can make calls out and you can eat as much food as you want. It is also close to home so you don't have to drive forever to get there. We only had a few members reply negatively about the Lodge. The majority of those that have attended in the past are very happy with the price, food and teaching rooms. For those that feel they cannot come because they don't have a roommate, please speak up at the meeting and we will try to accommodate you with someone. We all have a great time.

I also would like to urge everyone to think about running for the open offices this year. Being on the board opens your eyes to a lot of behind the scene business and what it takes to keep us up and running. A new body is always a welcome sight on the board. Someone with new Ideas! If you plan on running, your membership dues and your SDP dues will need to be paid before the November meeting. Please give some thought to running. We will all be happy to help you with the transition!!!

As discussed at an earlier meeting this year, the board has voted to begin using PayPal for membership signups this year. If you do not have a PayPal account you will need to register for one if you wish to pay for your dues through PayPal. You can still continue to pay membership by check or cash but we are allowing the option to also pay by credit card through PayPal. If you decide to pay your dues through PayPal you will be charged an additional service fee of .58 cents which will make membership \$20.88. We will discuss this more at the September meeting. The deadline for membership dues is December 1.



Vice-President News Desk



2013 Art Safari Retreat
October 4 – 6, 2013
Held at: YMCA Trout Lodge
13528 State Hwy AA
Potosi, MO 63664
Phone# 573-438-2154 or
Toll Free 888-FUN-YMCA



This has been one crazy summer for the Finklang family. We are preparing our home for sale, we have had ___ deaths in the family, and I have been working 12 hr. days. Needless to say things have been stacking up.

Our Art Safari Retreat time is almost here. By the time you get this newsletter it will only be a couple of weeks away. The teachers are busy preparing the surfaces for their classes.

Our September meeting date is later this year, so please don't wait until then to register. **NOW IS THE TIME TO REGISTER** if you are going to Retreat!

The teachers need to know their numbers right away, and there is still room in all of the classes. We have an exceptional group of retreat projects to choose from this year. A big thank you to all who submitted.

The entertainment has been planned and promises to be a great time for you.

Don't forget to pack your camera, snacks and anything else you may want for your evenings of fun and painting.

We are looking forward to seeing you there - Trout Lodge is a great place for a weekend get-away for the whole family.

Teachers - Please bring your projects for viewing again, including the MITI projects.

See you soon at the September meeting.

Debbie Finklang

News from our Program Chair Barb Ogden



It is hard to believe that we are almost through with summer and fall will be upon us before we know it!

There is still time to sign up for the October Sharing Workshop. I will be teaching the cute “snowlady” on a sled. The medium is acrylic.

We will also start signing up for Mark Polomchak's Seminar in May 2014. Stop by the seminar table to take a look at what we will be painting. You only need to pay one day's fee to reserve your space.

And, don't forget Sherry Nelson will be here next September. I am hoping to get her projects chosen by our November meeting.

For those of you who had signed up for Della Wetterman, please let me know what you would like done with your deposit monies. I have heard from a couple of you, but not all.

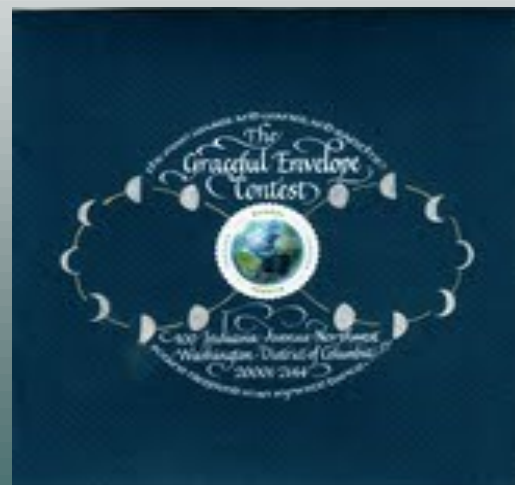
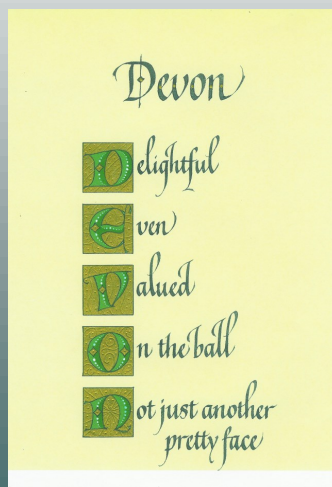
Christmas Party planning is in full swing and the committee is finalizing the location. We will start taking your reservations at this meeting.

Our program this month is Calligraphy by Cheryl Tefft. She will be teaching us the art of calligraphy, while doing a demo, and then giving us some hands on experience. The supply cost is \$5. See a list of supplies you need to bring in the newsletter.

Hoping to see all of you soon, Barb

September Paint In Supplies

good liner brush,
size 0 or smaller
water container
paper towels
micron pen, size medium or small



BIRTHDAY WISHES!



I would like to thank everyone for all the Sympathy Cards and kind words that I received after my brother passed away. It was a very sad and heartbreaking time and your thoughtfulness was appreciated. I would also like to thank those that came to the Wake. It meant so much to me. It is a blessing to have such caring friends. Thank you all again for your thoughts and prayers.

Jean Rogenhofer

Lovella Mauer	9/4
Karen Steiner	9/9
Linda Rocklage	9/13
Jeanette Bishop	9/20
Josee Laferriere	9/20
Lorie Reece	9/21
Maureen Wasserman	9/22
Liz Geers	9/30
Ginger German	10/4
Marion Finn	10/17

**Gateway Decorative Artists Program
Registration Form**



Program _____ Date _____ Date _____ Date _____

Class Fee _____ Surface/Supply fee _____

Name _____ Phone _____

Address _____ City/Zip _____

Email _____ Amount _____ Cash ___ Check ___

Send to Barbara Ogden, 1424 Cave Springs Estate Drive, St Peters, Mo. 63376
For questions call: 636 928-5503 or email: program@gatewaydecorativeartists.com

Barb Ogden will be teaching a workshop on October 26 from

9-5 p.m.

Registration at web site:
decorativeartists.com

Snowflakes

Medium:
Acrylics
Size:
Surface:
Price: \$15.00



Supply cost will be \$20.00.^B



Barb Ogden just finished a commission piece for a client.

The pattern was in the spring issue of PaintWorks that was done in oils on a canvas. I converted it to acrylics and enlarged the piece to measure 30x30.



BIKER MAMA!! JOAN LOVE

Welcome!!!

***Claire Elizabeth
Gemmell
born July 30
Grand-daughter of
Debbie Christenson***



News from your Membership Chair, Cheryll Wilburn



Don't forget to wear your new painted Name Badge! September is Membership Month. Bring a friend to our meeting and introduce them to how much fun decorative painting is. Since we will have visitors please greet our guests and make them welcome, even inviting them to sit at your table.

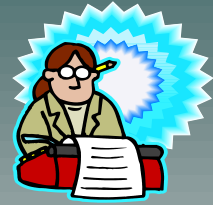
Please read all the Gold Brush information. This is the most important award given in our chapter.

Don't forget to renew your membership to SDP by December 1. You can renew online, mail it by using the form at the end of the newsletter, or call to renew. Also our dues need to be paid by December 1. Get the dues in by then to make sure your name is in the directory.

Our thoughts and prayers go to Debbie Finklang in the loss of her father-in-law, and to Jean Rogenhofer in the loss of her brother. Get well wishes go to Joann Goers on her recent surgeries, and to Marilyn Hartnett on her surgery.

Congratulations to Debbie Christenson on her new granddaughter, born on July 30, 6 lbs. 6 oz.

Cheryll Wilburn



GATEWAY DECORATIVE ARTISTS Meeting Minutes of June 9, 2013

Debbie Finklang called the meeting to order at 1:05 p.m. in the absence of Lorie Reece. All other board members were in attendance. Ginger German gave the invocation. We had a “meet and greet” before the general meeting started.

Debbie asked if there were any corrections to the April minutes. Judy Mayo made a motion to accept the minutes as printed in the Newsletter. Vada Galvan seconded this motion. Motion passed.

Debbie asked if there were any questions regarding the Treasurer’s Report. Hearing no questions, Barb Ogden made a motion to accept the Treasurer’s Report and this was seconded by Ingrid Oertli. Motion passed.

Debbie gave a report on Retreat. The booklets have been completed but are not yet available on-line. She will send these to Josee soon so they can be obtained on line. The projects selected for Retreat are on display today, as well as the make-it-take-its. At the time of registration, you must also list which make-it-take-its you will want to take. The deadline for making registrations at Trout Lodge is August 1st.

It was suggested that Gateway have a Welcoming Committee to welcome new members and guests at each of our meetings. Liz Geers, Linda Nelson and Elizabeth McClintock volunteered to be on that committee. It was also suggested that each table leave an empty chair and invite a new member or guest to sit at their table.

Debbie represented our chapter at the Conference this year. She gave a report on the Chapter’s Meeting. We will receive a free SDP membership to do with as we please if we recruit 4 new members in our chapter.

She talked about the SDP Museum and that help is needed to support the museum. They will be having a logo contest. Check the SDP website. There was a question and answer session. Many wanted to know why the Conference is always in April or May. That is because of cost. Some asked why there are more acrylic classes. They welcome all forms of art to be submitted. The CDA Certification is now open to Watercolor and Colored Pencils. They are working on upgrading their blog.

Cheryll gave a report on membership. We currently have 64 members. We have 35 members present today and 1 guest. Ginger German donated a door prize for today and Barb Ogden donated some mystery bags. Winners were: Kay Vuichard, Vada Galvan, Bonnie Heggemann and Donna Wessel. There were no brown bags brought in for the painted brown bag exchange. Cheryl thanked those that volunteered for the welcoming committee.

Barb gave a report on up-coming Seminars and Workshops. Tina Sue Norris will be having a colored pencil Seminar on June 22nd, 23rd and 24th. This Seminar is now filled up. It will be held at the Holiday Inn Express, which is okay and did not get hit by the last tornado as was reported on the news, in error.

We will have to cancel the Della Wetterman Seminar in September, as we did not have enough signed up. We only had 7 for Saturday, 7 for Sunday and 6 for Monday. We can give those that paid for this seminar a refund, or can transfer their money to Mark Polomchak’s Seminar or Sherry Nelson’s Seminar.

Sandra Reynolds Sharing Workshop is scheduled for Saturday, July 20th, at Quality Testing, at 10:00 a.m. The cost for the 16 x 20 canvas, which will be base coated, and the paints, will be \$10.00.

Barb Ogden's Sharing Workshop will be on October 26th at Quality Testing. There is still time to sign up for either of these workshops.

Mark Polomchak will be here next May for a Watercolor Seminar and Sherry Nelson will be here for a Seminar in Oils next September. Projects for these seminars have not yet been selected.

The Board and Refreshment Committee can enter the meeting room at 12:00 noon. We ask that all others do not enter until 12:30 p.m. This gives time to set up for the meeting.

We have an "opportunity of ownership" on two placemats that were painted like the ones we provided for the Conference Banquet Table. Tickets are \$1.00 each or 6 for \$5.00. We also have an extra name badge that has been painted. The kits to paint you own name badge are \$2.00 each and you can stay after the meeting to paint this, or take it home to paint.

The items that were brought in for "Show and Tell" were shown by the members that painted them.

Mary Jo Kumer advised that we have mailed 488 Memory Boxes. The July Memory Box Paint-in will be a Lady Bug, taught by Mary Jo. Donna Wessel will teach the August paint-in and Joan Love will teach in September. October and December are months still open for anyone who would like to teach something.

Donna reported that in April we made \$194.00 from the wood that Ellen Rohne donated for our auction. We made \$24.00 from that ribs that Elizabeth McClintock donated and were purchased by Ellen Rohne. \$48.00 was collected from the 50/50 drawing. This makes a total \$266.00 collected for the Memory Box Program. Donna still has some books, videos and packets to sell, but would like to donate these to Left-Over's if they are not sold soon.

Sandy said she would like to receive your "brags" for the next Newsletter by the end of August. Our next meeting will not be until the 22nd of September. Sandy suggested that we might try to get new people to come to our meetings by passing out our tri-folds to people we see in the paint department at Michaels or Hobby Lobby. We collected \$52.00 in our 50/50 drawing today. So, \$26.00 goes to the Memory Box Program and \$13.00 each goes to our two winners: Ginger German and Cheryl Wilburn.

Ginger German suggested that we have a "Granddaughter's Day" next year. Everyone could bring their granddaughter to a meeting. She said her granddaughters are always wanting to come to one of our meetings and are very curious as to what we do.

Mary Jo talked about the postage for the Memory Boxes. The hospitals in St. Louis that we supply are: St. Joseph's at Lake St. Louis, DePaul Medical Center, and Cardinal Glennon Children's Hospital on request. Some of the boxes are hand delivered. The hospital must have a Bereavement Program in order to participate in the Memory Box Program. Tole Friends has a form to be filled out.

A drawing was held for the Place Mats and Linda Nelson was the lucky winner. The winner of the name badge was Ingrid Oertli.

Gloria Falk thanked her committee for painting the name badges and the Place Mats.

We need a volunteer to chair the Nominating Committee. We will have three positions open for this year's election. Jean Lindsey volunteered.

Bonnie and Jackie are new on the Refreshment Committee and would like to know who has signed up for the rest of the meetings this year. Ellen Rohne's group has signed up for September and the South County Group has signed up for November.

A drawing was held for the centerpieces. A thank you goes to Ann Mohrman for donating all the plants.

Mary Jo made a motion to adjourn the meeting. This was seconded by Jean Lindsey. The meeting adjourned at 2:55 p.m.

Respectfully submitted.
Jean Rogenhofer
Recording Secretary

Memory Box Cash Donations - Tax Receipts



Cash donations can be made two different ways:

1. You can go to www.memoryboxes.org and there is a donation button you click on and you can pay with a credit card or a PayPal account.
2. You can write a check and mail it to Karen Chase at:

Tole Friends Memory Box Program
2049 W. 1940 N.
St. George, UT 84770

You make your donation to the Memory Box Program designating Gateway Decorative Artists as the recipient. Once the money is received, Gloria will be notified that \$XX for shipping for the chapter can be reimbursed. She will send the shipping receipts to Karen Chase of Tolefriends, a reimbursement check will then be mailed. This will continue until all the money you have donated is gone. This way, all the money goes to help "our chapter" with the biggest expense (shipping). Once she receives the money she will send you a tax deduction letter that shows the amount of money donated and the date it was donated. You can use this letter as proof of the donation when you file your income taxes.

GATEWAY DECORATIVE ARTIST Official Request for 2014 Officers

All nominees must have been a member for not less than 2 years immediately preceding the time of election and have attended 5 meetings.

Please place a mark to indicate:

Not eligible, Not interested at this time, Interested, I would like to be called.

Signature _____

Print _____

Interested members please provide best contact times and phone numbers.

Day _____ Time _____ Phone Number _____

Day _____ Time _____ Phone Number _____

The offices to be voted on in November for a two- year term are:
President, Program Chairman, and Newsletter Editor.

**Please send or give this completed form to: Jean Lindsey,
Nominating Comm. Chair, 140 So. St. Charles St., Florissant, MO 63031**



November Officer Elections
We vote for:
President, Program Chairman, and Newsletter Editor.

If you know that you will not be able to attend the meeting in November and would like to vote by absentee ballot, you will need to send me a self-addressed envelope to put your ballot in so I can mail you the Absentee Ballot. You would then need to mail the completed ballot back to me having ABSENTEE BALLOT on the outside. It will be opened when the ballots are being counted. I would need to receive your ballot before the November Meeting.

Jean Lindsey
140 So. St. Charles St.
Florissant, MO 63031
jeanlinddey@att.net

Elections
We vote for:
President, Program Chairman, and Newsletter Editor.

Board Member Duties & Responsibilities

The President's duties shall be:

- a. Preside over chapter meetings.
- b. Preside over meetings of the Executive Board and be responsible for orientation of new Board members.
- c. Appoint a Parliamentarian with Board approval. It should be someone in which the President has confidence. (See Article XI for Parliamentarian Duties)
- d. Sign checks in the absence of the Treasurer.
- e. Ascertain that all required reports and correspondence are sent to the SDP.
- f. Perform such other duties as usually pertain to the office.
- g. Be an ex-officio member of the Executive Board for the year following the elected term, serving in a non-voting advisory capacity, and must be a current year member.
- h. Appoint all Standing and Special Committee Chairs, with Board approval. The President may serve in an unofficial capacity on all committees with the exception of the Nominating Committee and Gold Brush Award Committee.
- i. Appoint tellers to count election ballots.
- j. Keep accurate records of office expenditures and receipts for not less than the prior three (3) years

The Program Chairman's duties shall be:

- a. To procure educational or related programs for each meeting.
- b. To arrange and oversee seminars and special educational events.
- c. To arrange and procure rooms for all chapter meetings and seminars.
- d. Keep accurate records of office expenditures and receipts for each planned program for not less than the prior three (3) years.

The Newsletter Editor's duties shall be:

- a. Ensure Newsletter is published and delivered at least 10 days prior to established meetings, but not more than fourteen (14) days. The delivery of said newsletter will be through email and only sent USPS when email is not an option.
- b. Provide to members electronically or via flyers, information relative to special events, seminars, etc.
- c. Keep accurate records of expenditures and receipts for not less than the prior three (3) years.
- d. Mail one copy of all publications to Chapters Department of the SDP.
- e. Be responsible for getting information to the Web Editor in a timely manner.
- f. Keep one copy of each newsletter since becoming an affiliated chapter.
- g. Procure a membership address list from the Membership Secretary at the first Board meeting, and updates as they occur.

1. The Executive Board shall consist of the elected officers of the Chapter.

2. The duties of the Executive Board shall be:

- a. To transact necessary business in the intervals between Chapter meetings.
- b. To establish the dates of the three (3) remaining meetings as stated in the Standing Rules.
- c. To approve payment of routine bills.
- d. To approve the investment of any funds of at least one thousand dollars (\$1,000).
- e. President being ex-officio for one year following the expiration of the term of office and will serve in a non-voting, advisory capacity to the Executive Board.
- f. The Executive Board may, at their discretion, from time to time choose to subsidize, partially or in full, an educational activity for the benefit of current chapter members, or the public in general, utilizing available funds in the Chapter's checking or savings accounts.

Ways n' Means

The Ways n' Means Committee has met this summer and has come up with some different painting projects to offer for another round at trying to gain membership to the chapter.

Our kick-off date is scheduled for Oct. 19 at the Holiday Inn Express in Maryland Heights. Gloria will be teaching a canvas painting (TBD) and this will coincide with SDP's Decorative Painting Month. This is some of what SDP says about this October.

"This years' International Decorative Painting month is going to be a truly special event, and we want as many of our teachers, chapters and members to participate as possible. We will be organizing national promotion for the events of the month, so mark your calendars and start organizing your plans soon to be involved with the beginning of SDP's biggest International Decorative Painting Month yet

We want to come together as an international society and show the entire world just what decorative painting is all about. You have all worked for years to attain the painting skills you have, lets join together to share the decorative arts with everyone. We will be promoting this event on a national scale. By working together, October will be a month that millions learn about the wonderful world of decorative painting"!

The other classes we will be offering will be held starting in January with Cheryl and a watercolor design; February with Nancy and Debbie doing a Mixed media piece; March with Donna doing a color pencil design and we will wrap it up in April with another canvas design.

We are still painting at the wineries in O'Fallon and Wentzville.

If you would like to help by hosting a paint-in in your area let me know. I will be happy to give you some help in achieving that.

SDP says:

Why not go out today and book a show for October at your local library, a gallery, a recreation center—anywhere that will help you find an audience for your painting. If you have painting friends, invite them to show with you.

Donna is going to set up a couple of Library displays in her area to help promote Decorative Painting month. If you would like information on doing that, please contact Donna directly. She will be happy to help.

I will be making up a flyer about the paint-ins. I am asking you, as chapter members, to help promote these paint-ins to others by word of mouth and handing out these flyers.

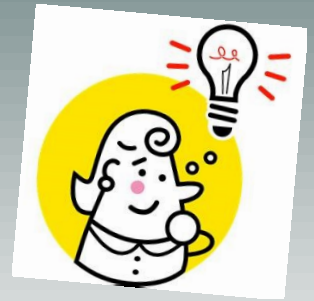
Remember by working together we can make our chapter much stronger.

Thank you,

Gloria Falk, TDA

Ways n' Means Chairman

THOUGHTS FOR GOLD BRUSH NOMINATIONS



Did you know?

You, the individual chapter member, are the ignition switch that initiates the annual Gold Brush process. You play a very key role that culminates in December at the Christmas Party when the next Gold Brush Award recipient is announced. Your decision to write a name on the Gold Brush Nomination Form should be given as much careful thought and consideration as that of the committee whose solemn duty and responsibility it is to evaluate that nominee.

Just how well do you know the person you are thinking of nominating when it comes to their service to the chapter? Do you know how long they have been a chapter member? Do you know if they have ever served on the board – in what positions, for how long, how many times? Have they chaired or served on any committees? How often do they attend chapter meetings, support seminars, or workshops? Do you see them helping to set up for events/activities? Do you see them staying behind to help clean up after a function? Do they regularly volunteer to teach a workshop, retreat class, paint-in project, make-it-take-it? Do they support our chapter charities? Would you consider them a “mover and a shaker”? Do they stand out as a doer and a team player? Are they a leader – someone you can admire and respect? Are they a positive promoter of Gateway Decorative Artists? Do they have a positive and supportive attitude toward the SDP? Do they support the National Museum of Decorative Painting? How many check marks can you put in their plus column? If the answer is many, you are probably on the right track.

Do you know how or from whom to obtain any of the above information you need in order to make an informed decision? Did you know that the Membership Chair keeps a card file on every current, active chapter member that lists a lot of the above information? A simple phone call could answer any questions you might have. Another source would be to talk to other members who have served in the same board position, or committees as your proposed nominee. You have a number of alternative methods of accessing as well as assessing the chapter service and character traits of your candidate. I urge you to avail yourself of them before writing a name on the Gold Brush Nomination Form.

The Gold Brush Award is the highest honor that the chapter can bestow upon a member. It is a once in a lifetime award. Therefore, in order to preserve the integrity and prestige associated with the award, it is important that only the most worthy and deserving member ultimately be chosen. When the next Gold Brush Award recipient is announced, those in attendance should be able to conclude unanimously that the goal has been fulfilled.

Cheryll Wilburn
Gold Brush Chair

GOLD BRUSH AWARD

Gold Brush Nomination Process:

To nominate someone for this high honor, fill out the form below.

The Committee will research your nominee’s qualifications based on information you and others give us. If you know of a specific service your nominee has performed, please state it briefly. If more information is needed a Committee member will contact you.

Please be conscientious in your choice and remember that this is not a popularity contest. A nomination box will be set up at the September and November meeting with extra forms available. **Please place your signed form into a sealed envelope and MARK IT GOLD-BRUSH**, and either drop it in the Gold Brush Award box, or mail to:

Cheryll Wilburn
410 English Manor Dr.
Wentzville, MO. 63385



PAST *Gold Brush Award* Recipients

- 1987 Joycelynn Smutz
- 1988 Judi Krause
- 1989 Bonnie Stout
- 1990 Gerry Klein
- 1991 Bobbie Gray
- 1992 Arlene Siebert
- 1993 Barb Ogden
- 1994 Carolyn Bacon
- 1995 Jeanne Abraham
- 1996 Annette Dozier
- 1997 Gloria Falk
- 1998 Jan Rosenburg
- 1999 Mary Jane Jett
- 2000 Ellen Rohne
- 2001 Ruth Ann Thompson
- 2002 Toni Dosser
- 2003 Debbie Christensen
- 2004 Laura Heathcote
- 2005 Mary McDevitt
- 2007 Mary Jo Kumer
- 2008 Jean Rogenhofer
- 2009 Vada Galvan
- 2010 Lorie Reece
- 2011 Donna Wessel
- 2012 Cheryll Wilburn

GOLD BRUSH NOMINATION FORM

Form must be signed to validate nomination

Each chapter member is allowed to nominate only one candidate, which will be kept confidential. My nominee for the Gold Brush Award in 2013 is:

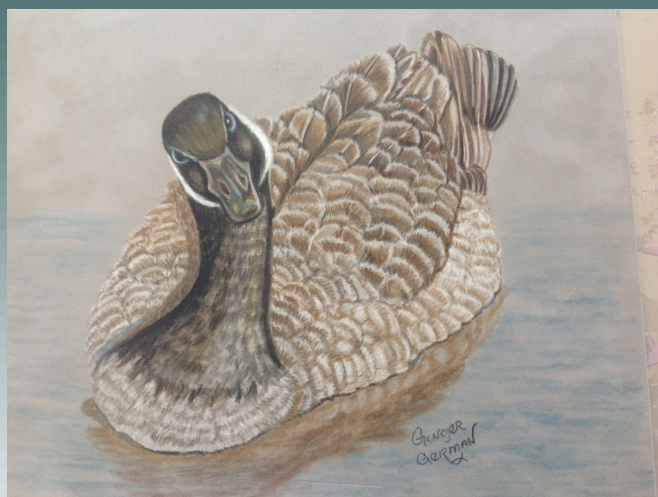
Reason: (state briefly—specific Chapter and/or community service)

Signature _____ Phone No: _____

GATEWAY BRAGS



Old Friends, by Ginger German, third place winner, still life professional div. HOOT Art Show



“GOT CORN” Colored pencil project on velour board taught by Tina Sue Norris and penciled by Ginger German in her class at “Hoot” in Columbus, Ohio.

Kissing Cousins, with Cheri Rol



Not yet finished!

A First Timer At HOOT

Since circumstances prevented us from attending the SDP Natl. Convention, the "Western Gals" decided to go to HOOT. On Aug. 5th, Karen Steiner, Marilyn McDonald, Ann Mohrman and I set off in Karen's van piled high with clothes and art supplies. We stayed at the Hyatt. I took an oil class with Diana Mercado from Argentina, an oil class from Cheri Rol and a color pencil class with Tina Sue Norris. At the Ladybug Hop on Wed. Evening, Marilyn and I (to our surprise) won the dance contest and we didn't even know we had entered! We were addressed as the "twister Queens" for the rest of the week! Also to my surprise, I won third place in the Still Life Professional division of the HOOT Art Show with an oil painting of my old clogging shoes.

We met a lot of nice people, painted some great projects, bought too much stuff at the trade show and generally had a lot of fun!

Ginger German

SUMMER SEMINARS AND MEETING MEMORIES



Gateway Members painting their own personal name badges after the June meeting led by Gloria Falk.



Tina Sue Norris
Colored Pencil
Seminar in June



June
Workshop
Taught
by
Sandra
Reynolds



Sandra Reynolds

Barb Ogden

Kay Vuichard



Jeanne Abraham

Lorie Reece

Carol Rufkahr



Peggy Araki

Debbie Finklang

Donna Wessel

GATEWAY DECORATIVE ARTISTS NOW HAS A FACEBOOK PAGE

To view our site and see what's going on on an up-to-date basis you can Connect on line by typing in

www.facebook.com/GatewayDecorativeArtists

We need members to click on the LIKE tab to help show your support for our site. You can invite your Facebook friends to take a look at our site so they can see all of the great things that we do and possibly become involved in.

Log onto our Facebook site using the web address above to see what's going on and click LIKE on different pictures and posts to help bring up our LIKE total #. You don't have to be a member of Facebook to view our site.

Jeanne Abraham had hip surgery in August. May she have an easy and quick recovery.

Get well soon!!!



50/50 Drawing

We will have tickets available at the June Meeting
For our 50/50 drawing
To win 50% of the Jackpot
Split between 2 winners
\$1 per ticket, or 6 for \$5
Tickets available at the Board Table



BUSY BEES DECORATING MEMORY BOXES



H O-O-T!!!!

Catch the Painting Bug



Boy, do I want to brag! I have the most amazing friends. Yes, you know them, they're all around you. Three of them left with me early Monday morning, August 5th on a long road trip to Columbus, Ohio to attend our first HOOT Convention. I can't speak for Ann, Ginger or Marilyn, but I was absolutely amazed at the extent of this Heart of Ohio Tole Painting Convention.

There were so many world class teachers who presented such a wide variety of classes. There were free demos each hour and a trade show that would blow your mind! Plus an Art Show, Banquet and a Ladybug hop (the theme of the convention was "Catch the Painting Bug"). Whew- we hardly had time to catch our breath! We loved it!

Ginger German placed 3rd in the Professional division of the Art show. We are so proud of her. Then, wait for this...Ginger and Marilyn McDonald won 1st place in the dance contest the Lady Bug hop...doing the TWIST! The only problem, when they interviewed, Ginger was from Missouri and Marilyn was from Missouri a h ! Humm. I sure can't explain that.

Thanks to Mary Jo and Joan Love for all their good advice about HOOT. And thanks to the members of Heart of Ohio Tole for all their hard work in presenting such a wonderful experience. A painting experience we will always remember.

Karen Steiner Warrenton, Missouri

"With brush in hand, my mind empties of its sorrows and the beauty in life smiles."

Priscilla Hauser



GREAT ADVERTISING OPPORTUNITIES

Ad	Size	Members		Non-Members	
		issue	year	issue	year
Full Page	8 1/4 X 10 3/4	\$ 10.50	\$ 50.00	\$ 13.25	\$ 62.50
Half Page	8 1/4 X 5 1/4	\$ 8.00	\$ 37.00	\$ 10.00	\$ 46.25
Quarter Page	4 X 5 1/4	\$ 5.50	\$ 25.00	\$ 6.50	\$ 31.25
Business card	4 X 2 1/2	\$ 3.00	\$ 12.50	\$ 3.75	\$ 15.50

Personal messages are \$.05/word

ALL ADS MUST BE PAID FOR IN ADVANCE OF PUBLICATION

Ads should be camera ready, which means typed, artwork, completed and ready to print. Gateway Gazette is good advertising for those wishing to advertise their business, shop, classes, wood, painting supplies or other services.

Contact: Sandra Reynolds at 618-979-2409 or newsletter@gatewaydecorativeartists.com for more information.

Charity Corner

TURNING POINT WOMEN'S SHELTER

Emergency Shelter gives assistance to those suffering from domestic violence and sexual assault. They offer crisis advocacy and peer counseling, assist victims in obtaining an Order of Protection from the abuser, and dealing with the Criminal Justice System. They help women gain access to available legal services, social service agencies, and programs that provide other types of needed help. Turning Point serves Franklin, Gasconade, Lincoln, Montgomery and Warren counties. Their location is confidential..

Items Needed At Turning Point

We would like to thank everyone for helping and thinking of us.

Items greatly needed are:

Toilet Paper, paper towels, twin sheets, hair brushes, bath towels, kitchen towels, Shower curtains (2 needed), pots and pans, cooking utensils, silverware, kids DVD's, diapers, red pens, boxes of tissues, washable markers, book bags—new or gently used.

**Be sure to tag your donation with the name of the shelter
you want to give your donation to. Thanks!**

Pets-A-Lone-Sanctuary (PALS)
4287 Hwy 47 West Hawk Point, MO 63349
P.O. Box 462 Troy, MO 63379
636-338-1818

**We are in dire need
of the following:**

BLEACH*****
PAPER TOWELS
30 GALLON TRASH BAGS*****
**TIDY CAT LITTER OR ANY LOW
DUST LITTER**

**HIGH ENERGY LAUNDRY
DETERGENT**

Riverbend Humane Society

Their needs right now are:

Dry dog food
Dry cat food
Cat litter
Cat toys & scratching posts
and perches
Food and water dishes
Bleach (for cleaning and disin-
fecting)
Blankets and towels



BOOKS - BOOKS - BOOKS

The USO can still use books. They MUST be paperback (no hardback). Please remember when filling out the donation log book.....even if the book is new you have to claim used price (\$1.50 - \$2.00).

Code of Ethics for Chapters Of the Society of Decorative Painters

As members of a chapter of the Society of Decorative Painters, our purpose, in common with that of the society, is the promotion of decorative painting. To this end we pledge ourselves to support the goals and purposes of the chapter of the Society:

- To keep the lines of communication open with fellow chapter and Society members, respecting one another and following appropriate lines of communication.
- To have a positive and open attitude, listening to fellow members' opinions.
- To remember the importance of an active membership, contributing our time and talents.
- To maintain high standards of integrity and honesty.
- To respect the rights of each member individually, and the right of the majority to govern; therefore supporting the decision of the majority, regardless of how we personally voted.
- To support and cooperate with leaders who serve the chapter, respecting the time and dedicated service of past leaders, and when completing our terms as officers, relinquishing our responsibilities cheerfully to support new leaders.
- To promote a friendly chapter environment where chapter members motivate and inspire one another, and where differences of opinion are accepted without a need to continue to discuss past differences.
- To accept and respect the varied reasons members have for chapter membership and the varied skill levels they represent.
- To remember Chapters are nonprofit organizations and their goal is to promote decorative painting for everyone.
- To realize the conduct and activities of the chapter and its members reflect on the entire Society of which the chapter is a part.

As members of the chapter and of the Society, we acknowledge this code of ethics as an expression of our determination to maintain high professional standards. It is only the conscience of the individual who subscribes to this code that can guarantee its effectiveness.



Society of Decorative Painters

2014 MEMBERSHIP FORM

1 MEMBER OPTIONS PLEASE CHECK APPROPRIATE BOXES.

FOR FASTER SERVICE, pay online at DECORATIVEPAINTERS.ORG.

UNITED STATES

- \$50 INDIVIDUAL (\$55 after 12/1/13)
- \$80 BUSINESS (\$85 after 12/1/13)
- \$30 HOUSEHOLD (\$35 after 12/1/13)*
- \$30 TRIAL**
- \$15 STUDENT (\$20 after 12/1/13)*** ATTACH DOCUMENTATION OF ENROLLMENT.

INTERNATIONAL (U.S. FUNDS)

- \$80 INDIVIDUAL (\$85 after 12/1/13)
- \$50 ONLINE INDIVIDUAL (\$55 after 12/1/13) †
- \$30 HOUSEHOLD (\$35 after 12/1/13)*
- \$30 TRIAL**
- \$15 STUDENT (\$20 after 12/1/13)*** ATTACH DOCUMENTATION OF ENROLLMENT.
- \$110 BUSINESS (\$115 after 12/1/13)
- \$80 ONLINE BUSINESS (\$85 after 12/1/13) †

Check this box if you wish to pay for 2015 membership also.

* **HOUSEHOLD MEMBERSHIP FOR U.S. AND INTERNATIONAL:** An additional member sharing the same address as an Individual or Business member. Member online only. No printed *Decorative Painter* magazines will be mailed to you.

** **TRIAL MEMBERSHIP FOR U.S. AND INTERNATIONAL:** A one-year membership for a new member or anyone who has not been a member since 2011. Member online only. No printed *Decorative Painter* magazines will be mailed to you.

*** **STUDENT MEMBERSHIP FOR U.S. AND INTERNATIONAL:** Students enrolled full-time in an accredited educational institution, including accredited home-schoolers. Member online only. No printed *Decorative Painter* magazines will be mailed to you.

† **ONLINE INTERNATIONAL MEMBERSHIPS:** Will be able to view *The Decorative Painters* magazine as a PDF, online only. No printed *Decorative Painter* magazines will be mailed to you.

2 ONLINE 2014 BUSINESS AND TEACHER DIRECTORY

BUSINESS MEMBERS: Check all boxes that apply. **FREE LISTINGS** with your business membership. Visit DECORATIVEPAINTERS.ORG to submit up to one-hundred-word description of your business.

INDIVIDUAL MEMBERS: Check all boxes that apply. Listings are \$10 each per year.

- AUTHOR
- DISTRIBUTOR/WHOLESALE
- MANUFACTURER/IMPORTER
- RETAILER
- TRAVEL-TEACHER
- DESIGNS AND/OR PAINTING SKILLS FOR HIRE
- HOME STUDIO
- PUBLISHER
- TEACHER

3 MEMBER PROFILE (Please Print)

NAME _____ MEMBER NO. (If Renewal) _____

HOUSEHOLD MEMBER NAME _____ MEMBER NO. (If Renewal) _____

BUSINESS NAME _____

MAILING ADDRESS _____

CITY _____ STATE/PROV. _____ ZIP/POSTAL CODE _____ COUNTRY _____

EMAIL _____ WEBSITE _____

HOME PHONE (____) _____ CELL PHONE (____) _____ FAX (____) _____

I WOULD LIKE TO GIVE \$2 \$5 \$10 OR \$_____ to the IMSDP, which provides scholarships to members and supports other SDP initiatives.

I WOULD LIKE TO GIVE \$2 \$5 \$10 \$25 \$50 OR \$_____ to SDP.

4 PAYMENT INFORMATION CHECK OR MONEY ORDER IN U.S. FUNDS ONLY

Check Money Order CREDIT CARD: VISA MASTERCARD TOTAL _____

CARD NUMBER _____ EXPIRATION DATE _____

SIGNATURE _____

YES! This is a gift membership from _____ MEMBER NO. _____

MAKE CHECKS PAYABLE TO: SDP, 393 N. McLean Blvd., Wichita, KS 67203-5968. For MasterCard or VISA payment call (316) 269-9300 ext. 105, OR fax membership form to (316) 269-9191.

IMPORTANT

Membership year is Jan. 1 to Dec. 31, 2014. You may join any time of the year and receive all applicable SDP benefits and back issues of *The Decorative Painter* magazine for that year. An additional \$5 late fee will be required for payments postmarked after Dec. 1, 2013. This fee does not apply to new members and members who did not pay in 2012 and 2013. **YOUR 2014 MEMBERSHIP CARD WILL ARRIVE WITH ISSUE # 1, 2014, OF THE DECORATIVE PAINTER.**

Thank you for supporting the Society of Decorative Painters.

393 N. McLean Blvd., Wichita, KS 67203-5968 • 316-269-9300 Fax: 316-269-9191 • DECORATIVEPAINTERS.ORG

Gateway Decorative Artists Membership Form

Membership in the Chapter is OPEN ONLY to persons who are dues-paying members to SDP

Name _____ New Member _____ Renewal _____

Address _____

City _____ State _____ Zip Code _____

Phone _____ Email _____

Birth Date _____ SDP Membership # _____ (include copy of SDP card)
Member of other chapters _____

Check all that Apply:

Individual Member _____ Teacher _____ Business Member _____ Name of shop _____

Certification: MDA _____ CDA _____ TDA _____

Preferred Painting Medium: Oil _____ Acrylic _____ Watercolor _____ Other _____

What year did you start painting _____

Favorite Artists _____

Annual Dues are \$20, payable by Dec. 1

Please make check payable to Gateway Decorative Artists

Mail to: Cheryl Wilburn, 410 English Manor Drive, Wentzville, Mo. 63385



Gateway Gazette

Sandra Reynolds
Newsletter Editor

Contact Info:

www.newsletter@gatewaydecorativeartists.com
618 979-2409