

# Gateway Gazette

[www.gatewaydecorativeartists.com](http://www.gatewaydecorativeartists.com)  
[www.facebook.com/GatewayDecorativeArtists](http://www.facebook.com/GatewayDecorativeArtists)

## Inside this issue:

Calendar	2
Presidents Message	3
Vice-President Chair	4
Programs	5
Membership Chair	7
Meeting Minutes	9
Charities	14

## Gateway Chapter Meeting

**Sunday, February 9, 2014**  
**Maryland Heights Community Center**  
**2344 McKelvey Road, Maryland Heights, Mo.**  
**314 738-2599**  
**Meeting Starts at 1:00 p.m.**  
**Doors open at 12:00 p.m.**

### Directions from I-270

**Dorsett Rd. west**  
**McKelvey Rd. right**  
**Ameling Rd. right**  
**McKelvey Rd. left**



## Refreshments

Board members are serving refreshments for this meeting.

Mary Jo Kumer—Soda

## After Meeting Paint-In



**Supplies needed:** Water container, palette, paper towels.,  
**Brushes:** #18/0 liner; #4 filbert and 1/4" angular

**Cost is \$3.00**



# Board Members

## President

Lorie Reece 314 971-0190  
president@gatewaydecorativeartists.com

## Vice-President

Debbie Finklang 636 290-6102  
vicepresident@gatewaydecorativeartists.com

## Program Chairman

Barbara Ogden 636 928-5503  
program@gatewaydecorativeartists.com

## Membership Secretary & Publicity

Cheryll Wilburn 636 332-4548  
membership@gatewaydecorativeartists.com

## Recording Secretary

Jean Rogenhofer 314 739-3493  
secretary@gatewaydecorativeartists.com

## Treasurer

Donna Wessel 314 428-8226  
treasurer@gatewaydecorativeartists.com

## Newsletter Editor

Sandra Reynolds 618 979-2409  
newsletter@gatewaydecorativeartists.com

# Chapter Schedule of Events

February 4 Memory Box Paint-In Lindell Bank

Feb. 9 Chapter Meeting Maryland Heights

Feb. 23 Learn to Paint Class Holiday Inn Express

March 4 Memory Box Paint-In Lindell Bank

April 6 Chapter Meeting Maryland Heights

April 26 Sharing Workshop with Ellen Rohne

May 17, 18, 19 Mark Polomchak Water Color Seminar

June 8 Chapter Meeting Maryland Heights

June 14 Sharing Workshop/Lorie Reece

September 14 Chapter Meeting Maryland Heights

Sept. 26, 27, 28 Sherry Nelson Seminar

Nov. 9 Chapter Meeting Maryland Heights

## Area Representatives

South County Joan Love 314 842-7288  
North County Jean Lindsey 314 921-0425  
Illinois Lida Gillham 618 656-9294  
West County Maureen Wasserman  
636 227-2843

If you have anything to pass on to the Chapter, such as news of an illness, congratulations, etc. contact an area rep or your Membership Chairman, Cheryll Wilburn

## Standing Committee Chairs 2014

Nominating Committee Jean Lindsey  
Refreshments Marilyn Todd  
Gold Brush Award Cheryll Wilburn  
Librarian Barb Ogden  
Historian Marilyn Hartnett  
Ways and Means Gloria Falk  
Parliamentarian Liz McClintock

## Special Committee Chairs

Christmas Party Barb Ogden  
Memory Box Program Gloria Falk  
Mary Jo Kumer  
Webmaster Josée Laferriere

**Memory Box Paint-In with  
Joan Love on February 4 at the  
Lindell Bank in St. Peters.  
Come and paint with us.**





## News from your President Lorie Reece

Happy New Year to All! Wishing everyone health and happiness this Year!!!

I hope everyone had a wonderful Christmas and Joyous New Year.

Another year come and gone and another year older! Can these years slow down a little? I feel as if I am aging very rapidly these days.

I am so excited for the New Year with Gateway. The elections are over and I want to thank everyone for running again and those of you who stepped up to the plate to help make the chapter successful again this year. I think we have a great group of gals on the Board and a great chapter. We have had our first board meeting and I think it was very successful overall. We have some issues as far as membership being down and how to get around some costs, but I think our brainstorming has come up with some solutions for the meantime. We have had to make some cuts, but they are little and no one should be effected by them. I will discuss them at the meeting in February.

I will have returned from a trip to Atlanta, and hopefully, will have visited the National Museum of Decorative Arts and can tell you about that! At the time of writing this I am excited about going!

We have a great couple of seminars this year with Mark and Sherry and a couple of great Sharing workshops. Debbie and the board have come up with an excellent idea which will be discussed about retreat and the changes being made. Our meeting events look great too. I am very excited about all the functions going on this year.

Our memory box and sharing workshops are running beautifully and successfully, thanks to the women that are making these things happen.

We have lost a few members this year. To those that have moved on to pursue other venues of their lives, I wish them all the best and hope they can come back and visit with us. They will be missed.

Well, enough said! I can't wait to see everyone at the next meeting. Can you believe it will already be February!

XOXOXO



## Vice-President News Desk

As this month draws to a close, I find myself thankful for warm moments at home. The polar Vortex has been brutal this winter, which puts me in a spring painting frame of mind. I'm looking forward to losing the usual accoutrements of winter and going the seminars and paint-ins. Oh, the shades of ocean blue and spring green are calling me. Retreat 2014 here I come!

It's time to get the creative juices and paint brushes flowing. The sounds of "a little more color here" or "that terrible "F" word (floating of course) are becoming. If you would like to submit a project or two, see me after the meeting and I'll give you some submission forms.

### Reminder:

Everyone is a teacher. Anyone can teach at retreat and we welcome all to try their hand at it. We have some pro's that can lend advice and help.

All that's required is a submission

See you at the February meeting and get those creative juices flowing!

Deb Finklang, V.P.

## News from our Program Chair Barb Ogden



What a start to the New Year! As I sit and write this it is again snowing and blowing cold. Come on Spring.

The Seminar registrations are moving along and you still have time to sign up for both Mark Polomchack and Sherry Nelson. After the February meeting the Polomchack Seminar will be open to non-members and the Nelson Seminar will be open March 1. If you have registered and paid the fee your place is secure. Those of you still thinking about registering run the risk of not being able to get in if you wait.

Ellen Rohne and Lorie Reece will be teaching the Sharing Workshops this year. Come by the Seminar Table to see the class samples. Registration is required and the class fee of \$15 is due at time of registration. These are two great classes that I am sure you will not want to miss.

The second Mark Polomchack painting will also be on display and you may purchase "opportunities of ownership" at the meeting. If you would like to take tickets to sell to friends and family those will also be available.

I would like to thank those of you who helped me last year as Program Chair. Many hands make light work and it would be impossible to accomplish everything without your helping hands, Thank You!

See you at the meeting, Barb



**Sharing Workshop: April 26**  
**Teacher: Ellen Rohne**  
**\$15.00 class fee**  
**\$20 Supply Fee**



**Sharing Workshop: June 14**  
**Teacher: Lorie Reece**  
**\$15.00 class fee**  
**\$12 Supply Fee**

**BIRTHDAY WISHES!**

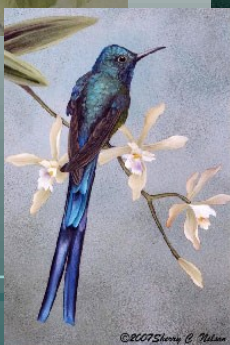
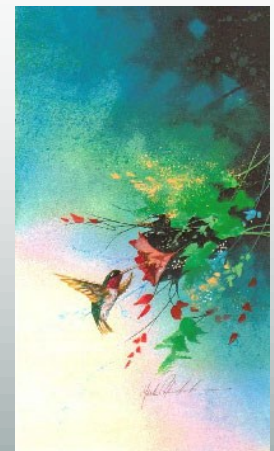
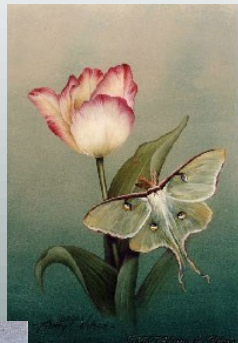
Ellen Rohne	Jan. 1
Judy Dodson	Jan 7
Vada Galvin	Jan 17
Judy Mayo	Jan 22
Cheryll Wilburn	Jan 24
Kay Vuichard	Jan 29
Donna Wessel	Feb 7
Joyce Miller	Feb 10
Sandra Reynolds	Feb 21



**Happy Valentine's Day!!!  
Let's wear red to the  
meeting.**

**See You then.**

Sherry Nelson Seminar in September.  
Reservations will open to non-members  
the end of February. Register now.



**Mark Polomchack  
watercolor seminar  
pictures. Sign up to  
reserve your spot.**

## **Membership Chair News**

**From  
Cheryll Wilburn**



Please check your 2014 Calendar/Directory as soon as you get it to make sure all your info is correct-especially your email address. This is very important since that is how you get your newsletter. And you certainly don't want to miss out on that! For those of you unable to make the February meeting and would like to have your Calendar/Directory mailed to you, please enclose a \$.70 SASE (business size). This amount is what my PO said it would take to mail it.

Please send to:  
Cheryll Wilburn  
410 English Manor Dr.  
Wentzville, MO 63385

There is a concern I have that has come to my attention about some members and guests that have not felt welcome at our meetings. This was not something I was happy to hear about. I'm sure this was not intentional. At our meetings and other events please try to take the opportunity to talk and socialize with other people, not just with your close friends. It is especially important to show that you're not too busy at your table to ignore other members or guests. I feel all of us need to mix (socialize). Introduce yourself to new members, guests, and even us "old" members.



**The Learn to Paint Class  
taught by  
Cheryll was held at the  
Holiday Inn Express,  
Maryland Heights in Jan.**

**The next class will be on Sun  
Feb. 23 taught by Nancy Falk  
and Debbie Finklang.**



**There is still a reward out at Trout Lodge for the CAPTURE of these creatures!!!**



**If you missed the November meeting, you missed out on great fun, great food supplied by our South County ladies, beautiful art work on display, fabulous memory boxes painted by our members, a wonderful paint-in taught by Lorie Reece, registering for this years seminars. Don't miss the February Meeting See you there. Sandra Reynolds**





GATEWAY DECORATIVE ARTISTS  
Meeting Minutes of November 10, 2013

Lorie Reece called the meeting to order at 1:15 p.m. All board members were present. Ginger German gave the invocation. After that she said she had some White Irises from her yard if anyone wanted some. She then announced that this would be her last meeting as she and her husband were selling their house and would be traveling as construction missionaries.

Lorie thanked everyone for coming and told Ginger that everyone is going to miss her.

Lorie asked if there were any corrections to the September minutes. Debbie Finklang made a motion to accept the minutes as printed in the Newsletter. Bonnie Heggemann seconded the motion and this was passed.

Lorie asked if there were any questions regarding the Treasurer's Report. Elizabeth McClintock made a motion to accept the Treasurer's Report and this was seconded by Carol Rufkahr. Motion passed.

Lorie thanked the South County group for today's luncheon.

Debbie Finklang gave a report on Retreat. We only had 17 that attended this year, but everyone had a good time. We downsized the classrooms to two instead of three to cut costs and in an effort to break even. Next year, we are thinking of looking for a different location, or possibly just having Retreat every other year. If you have any suggestions, please send an e-mail to Debbie.

Barb Ogden said the Christmas Party will be held at Yacovelli's again this year. It will be on Sunday, December 1<sup>st</sup> and will cost \$20.00 per person. We will have the ornament exchange again this year, and also a cookie exchange. If you would like to participate, please bring 3 dozen cookies, wrapped in packages of 6 cookies each.

Mark Polomchak will be teaching a Watercolor Seminar on May 17<sup>th</sup>, 18<sup>th</sup> and 19<sup>th</sup>. It will be held at the Holiday Inn Express. The projects are on display and the class fee is \$75.00 per day.

Sherry Nelson will be teaching an Oil Painting Seminar on September 26<sup>th</sup>, 27<sup>th</sup> and 28<sup>th</sup>. This will be held at the Staybridge Inn in O'Fallon. Projects that Sherry will be teaching are also on display. We are lucky to get Sherry, as she will not be travel teaching any more.

We need 2 volunteers for Sharing Workshops for next year. Ellen Rohne and Lorie Reece volunteered. Their projects will be on display at the February meeting.

Please fill out a form for each Seminar or Sharing Workshop that you register to attend. After the February meeting, we will open the registration up to non-members.

Lorie Reece will be teaching the project after today's meeting. It is a Snow Angel painted on a shovel and the supply cost is \$3.00.

Mary Jo Kumer informed us that the Memory Boxes displayed on the tables were painted by the South County group. We thank them for the 32 boxes.

The projects brought in for Show and Tell were shown by the members that painted them. Jo Lair brought a beautiful painting that she will be teaching during Memorial Week-end on May 24<sup>th</sup>, 25<sup>th</sup> and 26<sup>th</sup> in Illinois. She also brought a painting of Bunnies in the Snow that she will be teaching on December 14<sup>th</sup> at the Maryland Heights Center.

Cheryll Wilburn announced that we have 40 members present today. We also have one guest, Mari Hart, who said she will join and has also signed up for a Seminar. Welcome, Mari.

The Gold Brush Committee will be meeting today after our regular meeting has ended. Those on that committee should then meet with Cheryll.

Linda Nelson donated door prizes for today's meeting. The lucky winners were: Barb Grofe, Debbie Christenson, Joyce Miller, Marilyn McDonald, Linda Lewis, Ingrid Oertli, Jim Lair, and Jeanne Abraham.

Cheryll reminded everyone that our 2014 dues of \$20.00 is now due. Also, SDP's dues are due by the end of November or there will be an additional charge of \$5.00.

November Minutes , continued

The meeting was then turned over to Jean Lindsey, our Nominating Chair. Jean advised that Lorie Reese was running for President and asked if there were any other nominations. No other nominations were received. Jean mentioned that Barb Ogden was running for Program Chair and asked if there were any other nominations. There were no other nominations. Sandy Reynolds was running for Newsletter Editor. Jean asked if there were any other nominations for Newsletter Editor, but there were none. Gloria Falk made a motion to accept those mentioned for our 2014 officers. This was seconded by Barb Ogden. Motion carried.

Debbie Finklang mentioned that she brought some magnets in for everyone, advertising the upcoming San Diego Convention next May. She said the classes and other information will be on line after the 15<sup>th</sup>.

Donna Wessel advised that she has a few books left, with proceeds going to the Memory Box Program. She also has some Chapter Patches and four brush pins left. Cheryll Wilburn brought a box of books and magazines to the meeting which are free to members.

Sandra Reynolds collected \$63.00 in the 50/50 drawing so \$31.50 goes to the Memory Box Program and \$31.50 goes to our lucky winner - Donna Wessel. Sandra said the deadline for the next Newsletter will be the 15<sup>th</sup> of January

Gloria Falk announced that we have now collected enough to have the drawing for Mark Polomchak's beautiful watercolor painting of the barn scene. The lucky winner was announced as Diana Gilbert. She was one of the patrons at the recent Holiday Boutique.

Joan Love made motion to adjourn the meeting and this was seconded by Carol Rufkahr. The meeting adjourned at 2:10 p.m.

Respectfully submitted.  
Jean Rogenhofer

### GATEWAY DECORATIVE ARTISTS CHRISTMAS PARTY - DECEMBER 1<sup>ST</sup>, 2013

This year, the Christmas Party was held at Yacovelli's Restaurant. The theme was "Winter Wonderland". The party began at 12:30 with a "Meet and Greet" and a cash bar set up. The room was beautifully decorated and the Christmas Party Committee had adorable Snowman Placements at each place setting that they painted.

Barb Ogden welcomed everyone and thanked them for coming. Vada Galvan said a prayer before our luncheon began. The lunch was buffet style which included a Tossed Salad, Fried Chicken, Roast Beef, Broccoli-Cauliflower Gratin, Green Beans, Rolls and Chocolate Cake for Dessert. Coffee and Tea was also included. The food was delicious.

After lunch, the Ornament Exchange took place. The ornaments had been placed in a large basket and this was passed around. Those who brought an ornament took one from the basket. After the ornaments were unwrapped, everyone showed the ornament they received and told who it was from.

The Installation of Officers took place next. Gloria Falk did the installation. The Officers installed for 2014 were: Lorie Reece - President, Debbie Finklang - Vice President, Barb Ogden - Program Chair, Donna Wessel - Treasurer, Cheryll Wilburn - Membership Secretary, Sandra Reynolds - Newsletter Editor, and Jean Rogenhofer - Recording Secretary. After the Installation of Officers, the Cookie Exchange was done.

Next, it was time for the Gold Brush Award. Cheryll Wilburn, who was last year's recipient and this year's chair, made an announcement that this year's recipient was not at the Christmas Party so she was unable to present the award. Barb Ogden thanked her committee for the nice job they did in helping her. She mentioned that several extra Snowman Placemats were painted and chances for "Opportunity of Ownership" were \$1.00 each or 6 for \$5.00. A drawing took place and there were several lucky winners. Barb wished everyone a Merry Christmas and a safe trip home. The Christmas Party had come to an end and everyone was giving hugs and Christmas wishes as they were leaving

Respectfully submitted, Jean Rogenhofer, Recording Secretary

# WINTER BRAGS FROM GATEWAY ARTISTS



**Robin**

**Ginger German**  
Spent part of her winter painting these beautiful portraits of her Daughter and grandchildren.



**Christian**

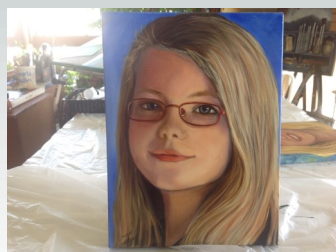


**Daughter: Shannon**



**Chloe**

**Great Job!!!!**



**Makayla**



**Elijah**

## South County Gateway Artists with a winter paint-in taught by Sandra Reynolds



**Peggy Araki, Joan Reilly, and Ingrid Oertli**



**Sandra Reynolds**



**Carol Rufkahr**

# CHRISTMAS LUNCHEON



Gateway members had a wonderful Holiday celebration at Yacovelli's Restaurant in December. The 2014 Board of Officers were installed, Ornaments and cookies were exchanged. A very festive and social event for everyone.



## GOLD BRUSH AWARD

The 2013 Gold Brush Award was presented to Ginger German for her outstanding contributions to Gateway Decorative Artists and various charitable organizations through the years. She was surprised at the December memory box paint-in as you can see from the picture.

**CONGRATULATIONS GINGER!!!!**





**Memory Box Paint-in Held in January was taught by Mary Jo Kumer. These are some of the ladies in action below. Thank you all for taking your time for this special charity.**



**Over 700 memory boxes were donated in 2013**



## Charity Corner

### TURNING POINT WOMEN'S SHELTER

**Emergency Shelter** gives assistance to those suffering from domestic violence and sexual assault. They offer crisis advocacy and peer counseling, assist victims in obtaining an Order of Protection from the abuser, and dealing with the Criminal Justice System. They help women gain access to available legal services, social service agencies, and programs that provide other types of needed help. Turning Point serves Franklin, Gasconade, Lincoln, Montgomery and Warren counties. Their location is confidential..

### Items Needed At Turning Point

**We would like to thank everyone for helping and thinking of us.**

**Items greatly needed are:**

**Tampax, Shampoo & Conditioner, Baby Diapers, size 4 & 5**



### **BOOKS - BOOKS - BOOKS**

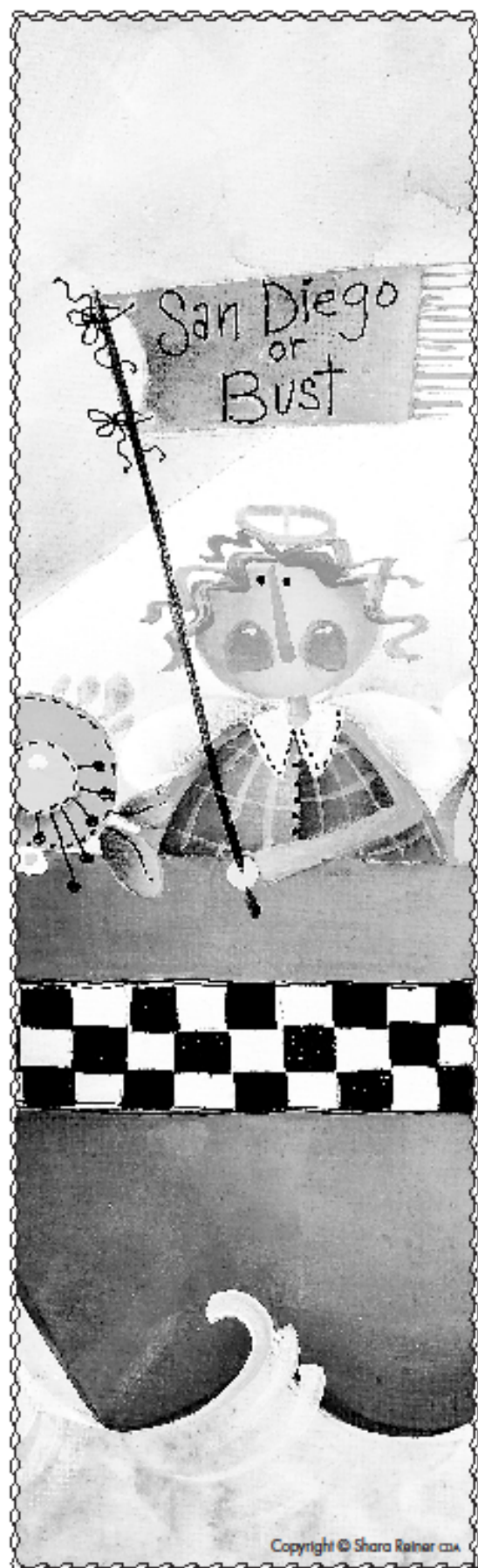
**The USO can still use books.** They **MUST** be paperback (no hardback).

Please remember when filling out the donation log book.....even if the book is new you have to claim used price (\$1.50 - \$2.00).

**Pets-A-Lone-Sanctuary (PALS)**  
**4287 Hwy 47 West Hawk Point, MO 63349**  
**P.O. Box 462 Troy, MO 63379**  
**636-338-1818**

Volunteers

- Dog and Cat Treats
- Dog or Puppy nylon collars
- Dog & cat toys
- Cat Litter – Low Dust
- Blankets and Towels (gently used)
- New or used kennels or dog runs
- Laundry Detergent-liquid high efficiency
- Fabric softener or dryer sheets
- Bleach
- Dish soap
- Hand soap
- Paper Towels
- Toilet paper
- 13 and 39 Gallon Trash Bags
- Computer paper (white or colored)
- Financial donations



Copyright © Shara Reiner cda

# SAIL INTO CREATIVITY

**The 42<sup>nd</sup> SDP International Conference & Expo  
May 12-17, 2014**

**Town and Country Resort • San Diego, California**

## **World Class Expo**

Including exhibitors from all over the U.S.

## **6 Days of Painting Classes**

Acrylic, Oil, Watercolor, Colored Pencil, and more!

## **Special Events with**

Jo Sonja Jansen MDA • Jamie Mills-Price & Kim Hogue cda  
Golda Rader • Shara Reiner cda • Willow Wolfe

## **PLUS**

Chapters & Members Gathering, Annual Banquet,  
& SDP Annual Meeting

## **Conference Special**

Available online November 15, 2013

at [DECORATIVEPAINTERS.ORG](http://DECORATIVEPAINTERS.ORG).

Purchase a printed copy online

or contact Shandi at (316) 269-9300 ext. 110,

email [SHANDI@DECORATIVEPAINTERS.ORG](mailto:SHANDI@DECORATIVEPAINTERS.ORG).

## **Class and Event Registration**

Opens December 3, 2013

## **Make Your Town and Country Reservations**

Call (800) 772-8527 (Mention SDP)

Or go to: [HTTPS://RESWEB.PASSKEY.COM/GO/SDP2014](https://resweb.passkey.com/go/sdp2014)

\$119 per night Single/Double

\$129 per night Triple

\$139 per night Quad

No resort fees • \$5 per day parking

## **For More Information**

Contact Becky Gray, Conference Director

(316) 269-9300, ext. 107,

or email her at [BECKY@DECORATIVEPAINTERS.ORG](mailto:BECKY@DECORATIVEPAINTERS.ORG).

Society of Decorative Painters • 393 N. McLean Blvd. • Wichita, KS 67203-5968  
(316) 269-9300 • fax (316) 269-9191 • [DECORATIVEPAINTERS.ORG](http://DECORATIVEPAINTERS.ORG)

WICHITA, KS: August 20, 2013—The Society of Decorative Painters is pleased to announce two new membership categories available immediately.

**TRIAL MEMBERSHIP:** Offered at \$30 for the first year, the trial membership allows new painters to try out the Society for one year before committing to individual membership at the regular \$50 price. Trial members receive all the benefits of individual members with the exception of a printed version of *The Decorative Painter* magazine. Trial membership is only available to new members and those former members who have not renewed in the last three years. At the end of their first year, trial members will be asked to join SDP at the full individual membership price.

**STUDENT MEMBERSHIP:** Offered at \$15 per year, the student membership allows full-time students of an accredited educational institution or homeschool program to become involved with SDP and learn to paint. Student members receive all the benefits of individual members with the exception of a printed version of *The Decorative Painter* magazine, and the right to vote or hold office. This membership category may be renewed annually as long as the member remains full-time student.

BENEFITS for both Trial and Student Members

- ***The Decorative Painter***, the official publication of the Society of Decorative Painters, will come to you four times each year with more than fifteen projects per issue, along with artist interviews, product reviews, the Certification gallery, and news coverage on decorative painting artists and businesses worldwide. **NOTE: Trial, Student, Online, and Household members will not receive a printed version of the magazine, but will be able to download a digital version (PDF) online.**

Stay up to date on industry news and continue to learn with **Certification Happenings, Education Happenings, and Chapter Happenings**, delivered to your inbox throughout the year. Connect with SDP daily through [decorativepainters.org](http://decorativepainters.org), the SDP blog, Facebook, Twitter, and Pinterest.

- Apply for the [SDP Member Scholarship Program](#), which provides SDP members and chapters funding each year for art projects, trips, tools, and more.
- Find and join local [SDP chapters](#) to paint and learn with through monthly paint-ins, seminars, community service events, and more—all the while developing new friendships with fellow painters in your area.
- Receive member-only discount with more than thirty-five painting industry businesses, including Dick Blick, Jerry's Artarama, Jo-Ann Fabric & Crafts, and other specialty businesses that provide surfaces, supplies, and patterns for the decorative painter. Use these discounts to offset the cost of your SDP membership.
- For forty-one years SDP has held an [annual Conference](#) at a variety of locations around the United States. Now with approximately one hundred classes, dozens of exhibitors, and hundreds of painters, this is an essential event for any lover of decorative painting. For 2014, we will be meeting in **San Diego, Calif., May 12–17.**

Receive discounted entry for the annual **SDP Juried Art Exhibition**, a competition that allows you the opportunity to win cash awards and have your work featured at the annual Conference, in *The Decorative Painter*, and online at [decorativepainters.org](http://decorativepainters.org).

**Access the members' page** of [decorativepainters.org](http://decorativepainters.org), where you will find the digital version of *The Decorative Painter*, **online-only projects**, technique videos, your member discount list, and more.

- Be eligible for the [SDP Platinum Visa Card](#). Along with the great benefits you'll receive, every purchase goes to support SDP at no extra cost to you.
- The recognized worldwide [Certification Program](#) trains painters to develop their skills with the goal of earning the title of Certified or Master Decorative Artist in the tradition of many beloved artists and teachers from the history of SDP.
- Learn to teach, stay up to date with teaching news and techniques, and become SDP certified with the [Teacher Development Program](#). Use your painting skills to develop a business and earn an income doing what you love.
- Gain **free access** to one of the premier collections of decorative art at the **International Museum of the Society of Decorative Painters (IMS DP)** in Wichita, Kan.
- Receive a **New Member Kit** from DecoArt and Royal & Langnickel, consisting of a set of seven Americana Acrylics and three DecoArt mediums; set of five Royal Gold brushes and one Royal 1" sponge brush; black and white carbon paper, tracing paper, and an 8" x 10" clear styrene sheet you can use to practice brushstrokes; and *Decorative Painting for Everyone* course guidebook.

These are the tangible items that come with membership, but possibly more important is that with membership to SDP, you **become an essential part of the premier international painting organization**, where you will grow your artistic skills, meet new lifelong painting friends, be part of the painting community, and help create the future for decorative painting.





# Society of Decorative Painters

## 2014 MEMBERSHIP FORM

### 1 MEMBER OPTIONS PLEASE CHECK APPROPRIATE BOXES.

FOR FASTER SERVICE, pay online at DECORATIVEPAINTERS.ORG.

#### UNITED STATES

- \$50 INDIVIDUAL (\$55 after 12/1/13)
- \$80 BUSINESS (\$85 after 12/1/13)
- \$30 HOUSEHOLD (\$35 after 12/1/13)\*
- \$30 TRIAL\*\*
- \$15 STUDENT (\$20 after 12/1/13)\*\*\*  
ATTACH DOCUMENTATION OF ENROLLMENT.

#### INTERNATIONAL (U.S. FUNDS)

- \$80 INDIVIDUAL (\$85 after 12/1/13)
- \$50 ONLINE INDIVIDUAL (\$55 after 12/1/13) †
- \$30 HOUSEHOLD (\$35 after 12/1/13)\*
- \$30 TRIAL\*\*
- \$15 STUDENT (\$20 after 12/1/13)\*\*\*  
ATTACH DOCUMENTATION OF ENROLLMENT.
- \$110 BUSINESS (\$115 after 12/1/13)
- \$80 ONLINE BUSINESS (\$85 after 12/1/13) †

Check this box if you wish to pay for 2015 membership also.

\* **HOUSEHOLD MEMBERSHIP FOR U.S. AND INTERNATIONAL:** An additional member sharing the same address as an Individual or Business member. Member online only. No printed *Decorative Painter* magazines will be mailed to you.

\*\* **TRIAL MEMBERSHIP FOR U.S. AND INTERNATIONAL:** A one-year membership for a new member or anyone who has not been a member since 2011. Member online only. No printed *Decorative Painter* magazines will be mailed to you.

\*\*\* **STUDENT MEMBERSHIP FOR U.S. AND INTERNATIONAL:** Students enrolled full-time in an accredited educational institution, including accredited home-schoolers. Member online only. No printed *Decorative Painter* magazines will be mailed to you.

† **ONLINE INTERNATIONAL MEMBERSHIPS:** Will be able to view *The Decorative Painters* magazine as a PDF, online only. No printed *Decorative Painter* magazines will be mailed to you.

### 2 ONLINE 2014 BUSINESS AND TEACHER DIRECTORY

**BUSINESS MEMBERS:** Check all boxes that apply. **FREE LISTINGS** with your business membership. Visit DECORATIVEPAINTERS.ORG to submit up to one-hundred-word description of your business.

**INDIVIDUAL MEMBERS:** Check all boxes that apply. Listings are \$10 each per year.

- AUTHOR
- DISTRIBUTOR/WHOLESALE
- MANUFACTURER/IMPORTER
- RETAILER
- TRAVEL-TEACHER
- DESIGNS AND/OR PAINTING SKILLS FOR HIRE
- HOME STUDIO
- PUBLISHER
- TEACHER

### 3 MEMBER PROFILE (Please Print)

NAME \_\_\_\_\_ MEMBER NO. (If Renewal) \_\_\_\_\_

HOUSEHOLD MEMBER NAME \_\_\_\_\_ MEMBER NO. (If Renewal) \_\_\_\_\_

BUSINESS NAME \_\_\_\_\_

MAILING ADDRESS \_\_\_\_\_

CITY \_\_\_\_\_ STATE/PROV. \_\_\_\_\_ ZIP/POSTAL CODE \_\_\_\_\_ COUNTRY \_\_\_\_\_

EMAIL \_\_\_\_\_ WEBSITE \_\_\_\_\_

HOME PHONE (\_\_\_\_) \_\_\_\_\_ CELL PHONE (\_\_\_\_) \_\_\_\_\_ FAX (\_\_\_\_) \_\_\_\_\_

I WOULD LIKE TO GIVE  \$2  \$5  \$10 OR \$\_\_\_\_\_ to the IMSDP, which provides scholarships to members and supports other SDP initiatives.

I WOULD LIKE TO GIVE  \$2  \$5  \$10  \$25  \$50 OR \$\_\_\_\_\_ to SDP.

### 4 PAYMENT INFORMATION CHECK OR MONEY ORDER IN U.S. FUNDS ONLY

Check  Money Order CREDIT CARD:  VISA  MASTERCARD TOTAL \_\_\_\_\_

CARD NUMBER \_\_\_\_\_ EXPIRATION DATE \_\_\_\_\_

SIGNATURE \_\_\_\_\_

YES! This is a gift membership from \_\_\_\_\_ MEMBER NO. \_\_\_\_\_

MAKE CHECKS PAYABLE TO: SDP, 393 N. McLean Blvd., Wichita, KS 67203-5968. For MasterCard or VISA payment call (316) 269-9300 ext. 105, OR fax membership form to (316) 269-9191.

### IMPORTANT

Membership year is Jan. 1 to Dec. 31, 2014. You may join any time of the year and receive all applicable SDP benefits and back issues of *The Decorative Painter* magazine for that year. An additional \$5 late fee will be required for payments postmarked after Dec. 1, 2013. This fee does not apply to new members and members who did not pay in 2012 and 2013. **YOUR 2014 MEMBERSHIP CARD WILL ARRIVE WITH ISSUE # 1, 2014, OF THE DECORATIVE PAINTER.**

Thank you for supporting the Society of Decorative Painters.

393 N. McLean Blvd., Wichita, KS 67203-5968 • 316-269-9300 Fax: 316-269-9191 • DECORATIVEPAINTERS.ORG

## Gateway Decorative Artists Membership Form

**Membership in the Chapter is OPEN ONLY to persons who are dues-paying members to SDP**

Name \_\_\_\_\_ New Member \_\_\_\_\_ Renewal \_\_\_\_\_

Address \_\_\_\_\_

City \_\_\_\_\_ State \_\_\_\_\_ Zip Code \_\_\_\_\_

Phone \_\_\_\_\_ Email \_\_\_\_\_

Birth Date \_\_\_\_\_ SDP Membership # \_\_\_\_\_ (include copy of SDP card)  
Member of other chapters \_\_\_\_\_

Check all that Apply:

Individual Member \_\_\_\_\_ Teacher \_\_\_\_\_ Business Member \_\_\_\_\_ Name of shop \_\_\_\_\_

Certification: MDA \_\_\_\_\_ CDA \_\_\_\_\_ TDA \_\_\_\_\_

Preferred Painting Medium: Oil \_\_\_\_\_ Acrylic \_\_\_\_\_ Watercolor \_\_\_\_\_ Other \_\_\_\_\_

What year did you start painting \_\_\_\_\_

Favorite Artists \_\_\_\_\_

**Annual Dues are \$20, payable by Dec. 1**

Please make check payable to Gateway Decorative Artists

Mail to: Cheryl Wilburn, 410 English Manor Drive, Wentzville, Mo. 63385



### Gateway Gazette

Sandra Reynolds  
Newsletter Editor

Contact Info:

[www.newsletter@gatewaydecorativeartists.com](http://www.newsletter@gatewaydecorativeartists.com)

618 979-2409