

# Gateway Gazette

[www.gatewaydecorativeartists.com](http://www.gatewaydecorativeartists.com)  
[www.facebook.com/GatewayDecorativeArtists](http://www.facebook.com/GatewayDecorativeArtists)

## Inside this issue:

Calendar	2
Presidents Message	3
Programs	4
Minutes	6/7
Membership Chair	8
Request for Officers	9
Nominations for Gold Brush	10 12

## Refreshments

Ingrid Oertli, Joan Reilly, Carol Rufkahr, Sandra Reynolds, Peggy Araki

Lunch will be sandwiches, salad and dessert

Mary Jo Kumer—Soda

## Gateway Chapter Meeting

Sunday, November 9, 2014

Maryland Heights Community Center  
 2344 McKelvey Road, Maryland Heights, Mo.  
 314 738-2599

Meeting Starts at 1:00 p.m.  
 Doors open at 12:00 p.m.



Directions from I-270

Dorsett Rd. west  
 McKelvey Rd. right  
 Ameling Rd. right  
 McKelvey Rd. left



Christmas ornament taught by Lorie Reece.

**Cost will be \$1.50. Normal painting supplies needed. Red, black, deep burgundy, gold – paint used, if you want to bring your own.**



## Board Members

### President

Lorie Reece 314 971-0190  
 president@gatewaydecorativeartists.com

### Vice-President

Debbie Finklang 636 290-6102  
 vicepresident@gatewaydecorativeartists.com

### Program Chairman

Barbara Ogden 636 928-5503  
 program@gatewaydecorativeartists.com

### Membership Secretary & Publicity

Cheryll Wilburn 636 332-4548  
 membership@gatewaydecorativeartists.com

### Recording Secretary

Jean Rogenhofer 314 739-3493  
 secretary@gatewaydecorativeartists.com

### Treasurer

Donna Wessel 314 428-8226  
 treasurer@gatewaydecorativeartists.com

### Newsletter Editor

Sandra Reynolds 618 979-2409  
 newsletter@gatewaydecorativeartists.com

## Chapter Schedule of Events

November 9 Chapter Meeting Maryland Heights

November 30 Christmas Party –Andre's 12 Noon

Dec. 2 Memory Box Paint-In Lindell Bank

Chapter Meeting Feb. 8

March Retreat -- Trout Lodge March 27, 28, 29

Chapter Meeting April 12

Chapter Meeting June 14

Chapter Meeting Sept. 13

Chapter Meeting Nov. 8

### Area Representatives

South County	Joan Love	314 842-7288
North County	Jean Lindsey	314 921-0425
Illinois	Lida Gillham	618 656-9294
West County	Maureen Wasserman	636 227-2843

If you have anything to pass on to the Chapter, such as news of an illness, congratulations, etc. contact an area rep or your Membership Chairman, Cheryll Wilburn

### Standing Committee Chairs 2014

Nominating Committee	Jean Lindsey
Refreshments	Marilyn Todd
Gold Brush Award	Cheryll Wilburn
Librarian	Barb Ogden
Historian	Marilyn Hartnett
Ways and Means	Gloria Falk
Parliamentarian	Liz McClintock

### Special Committee Chairs

Christmas Party	Barb Ogden
Memory Box Program	Gloria Falk
	Mary Jo Kumer
Webmaster	Josée Laferriere

## Memory Box Paint-In with Ginger German Dec. 2 at the Lindell Bank in St. Peters



## News from your President

Hi Everyone,

As much as I love fall, I do not love snow and am not ready for what is ahead of us. Wasn't it just summer? I have a few things to discuss with everyone.

1. Don't forget to bring your retreat projects. Please let me know the price and name of your piece before meeting so I can get notecards ready for voting at the Nov. meeting. I will also need your teacher's agreement.
2. Don't forget to pay your dues to SDP and Gateway
3. Don't forget to sign up for Christmas Party
4. Be ready to come in and vote for board members
5. Put your thinking cap on for Gold brush award
6. Retreat will be March 27,28, 29.

Hope to see you all at the next meeting. There is a lot going on.!



**This is my 3<sup>rd</sup> grader Thela, who is 9 years old. She came over and asked to paint something. I drew the outline of the butterfly but she picked out all the colors. The only thing I helped her with was the background. She went home and hung it in her bedroom. I think she did a really good job. Future Artist!**

## Vice-President News

Count Your Blessings. How many times have we heard that along with "Give Thanks" in November. Many times they are spoken following a tragic event and also at Thanksgiving. The holidays are a joyful time spent with family and friends. Among the many blessings I will be thankful for this year, is the blessing of our painting family (aka – GDA). I look forward to every meeting, event and class. There is no more joy than seeing so many friends enjoying time together and supporting the charities like we do.

Speaking of classes, do you have your retreat projects ready for the November meeting? There was a nice mix of classes this past year and next year will be even better. As you know, in 2015, we will be trying a new recipe for retreat. It will be held at the Trout Lodge in Potosi, MO but the date has changed. Please mark your calendar for March 26<sup>th</sup>, 27<sup>th</sup>, and 28<sup>th</sup> and start making reservations (phone: (314) 241-9622).

Thanks and Happy Hauntings.  
Debbie

## News from our Program Chair Barb Ogden



It is hard to believe that the month of November is upon us and that Christmas is right around the corner. What a year this has been, the least of which is that our first grand baby was born October 16. What a cutie!

The Sherry Nelson seminar was a great success. What beautiful paintings! And, next year we have two more great teachers lined up.

**Bobbie Campbell in June and Cheri Rol in October.**

**Come by the seminar table to check out the classes and sign up. Remember to fill out the registration form, and one days fee will hold your spot in the class.**

**Hope you can join us for the Christmas Party on November 30 at Andre's. We will be doing the cookie exchange and ornament exchange. Bring a guest. Final registration is November 15. If you would like to participate in the cookie exchange, please bring 3 dozen baked Cookies wrapped 6 to a bag to exchange with others. The cost for the Christmas Party is \$20. The registration form for the party is on the next page**

**We are in need of Sharing Workshop teachers as well as programs for 2015. Let me know if you are interested and we can set dates. Lorie Reece will be doing our program this month...we are painting an ornament so please join in. .**

**Hoping to see you November 9, Barb**

### Gateway Decorative Artists Christmas Luncheon Registration Form



Name \_\_\_\_\_ Phone \_\_\_\_\_

Address \_\_\_\_\_ City/Zip \_\_\_\_\_

Email \_\_\_\_\_ Amount \$20 \_\_\_\_\_ Cash \_\_\_ Check \_\_\_

Send to Barbara Ogden, 1424 Cave Springs Estate Drive, St Peters, Mo. 63376

For questions call: 636 928-5503 or email: [program@gatewaydecorativeartists.com](mailto:program@gatewaydecorativeartists.com)





# BIRTHDAY WISHES!

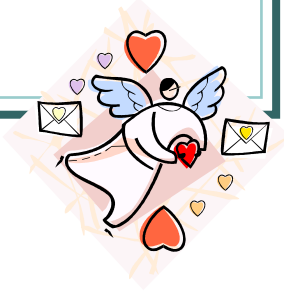
## CHRISTMAS PARTY 2014

Place.....Andre's  
3324 Telegraph Road

When.....Sunday November 30  
Cost—\$20

Time.....Opens at 12:30 Lunch served  
at 1:00

Activities.....Installation  
of Officers



Nancy Falk - Nov. 6  
 Barb Ogden—Nov. 12  
 Mary Jo Kumer—Nov. 13  
 Debbie Finklang—Nov. 17  
 Laura Mayo—Dec. 11  
 Joan Love—Dec 12  
 Milly Johnson—Dec. 17  
 Jean Lindsey — Dec. 22  
 Debbie Christenson—Dec. 28  
 Marilyn Hartnett—Dec. 29  
 Ellen Rohne—Jan. 1  
 Judy Dotson—Jan. 7  
 Vada Galvan—Jan. 17  
 Judy Mayo —Jan. 30

## Gateway Decorative Artists Program Registration Form



Program \_\_\_\_\_ Date \_\_\_\_\_ Date \_\_\_\_\_ Date \_\_\_\_\_

Class Fee \_\_\_\_\_ Surface/Supply fee \_\_\_\_\_

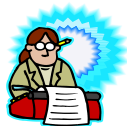
Name \_\_\_\_\_ Phone \_\_\_\_\_

Address \_\_\_\_\_ City/Zip \_\_\_\_\_

Email \_\_\_\_\_ Amount \_\_\_\_\_ Cash \_\_\_ Check \_\_\_

Send to Barbara Ogden, 1424 Cave Springs Estate Drive, St Peters, Mo. 63376

For questions call: 636 928-5503 or email: [program@gatewaydecorativeartists.com](mailto:program@gatewaydecorativeartists.com)



## GATEWAY DECORATIVE ARTISTS

### Meeting Minutes of June 8, 2014

Lorie Reece called the meeting to order at 1:10 p.m. All board members were in attendance. The invocation was given by Jeanne Abraham. Lorie thanked everyone for coming. Lorie mentioned that Gloria Falk recently had back surgery and is at home recovering. There is a card for her at the attendance table for everyone to sign.

Lorie also mentioned that Nancy Falk has some dog and cat necklaces that were painted by Gloria Falk that she is selling for \$5.00 each with the proceeds going to the PALS Animal Shelter. Lorie said that she recently adopted a cat from the shelter. She said the facility is very clean and a nice place in the country. Everyone was very loving and caring for the animals.

Lorie asked if there were any corrections to the June minutes as printed in the Newsletter. Hearing no comments, the minutes were approved.

Lorie asked if there were any questions regarding the Treasurer's Report. Hearing no questions, the Treasurer's Report will be filed.

Lorie mentioned that the SDP Conference will be held in the Chicago area in 2015. SDP usually asks the various chapters to make the centerpieces and table favors for the banquet. If they ask us and we decide to do this, we will need a Chair person for this committee. Donna Wesel and Lorie Reece volunteered to help on the committee.

Cheryll Wilburn is the Gold Brush Committee Chair. We need some volunteers from our membership to also be on this committee. Vada Galvan, Millie Johnson and Jeanette Bishop volunteered.

There was an error in the Newsletter, which mentioned the November meeting as being on November 5<sup>th</sup>, but this should be November 9<sup>th</sup>.

We need a volunteer to Chair the Refreshment Committee next year. The Chair person will bring the paper goods, etc. to the meetings and keep track of those that volunteer to bring refreshments each meeting.

Now is the time to think about volunteering or nominating officers for next year. We have four board members that will be leaving the board at the end of this year. We will need a Membership Secretary, as Cheryll will be leaving. Vada Galvan volunteered for this position. We also need a Recording Secretary, as Jean will be leaving. There were no volunteers or nominations for this office. We need a Vice President, as Debbie will be leaving. Ellen Rohne volunteered for this office. We will also be needing a Newsletter Editor, as Sandy will be moving to Kentucky. Marilyn Hartnett volunteered for this office. The office of Treasurer is open for election this year. Donna Wessel has volunteered to run again for this office. There were no other nominations or volunteers at this time.

Our Retreat for next year will be held on March 27<sup>th</sup>, 28<sup>th</sup> and 29<sup>th</sup> at Trout Lodge. Rooms are cheaper at that time of the year - \$99.00 for one, or \$79.00 each for two. Teachers need their projects submitted by the November meeting. We will check on the contract for room rentals, which we think are 10 rooms.

Barb Ogden mentioned the fact that there is too much talking during the meeting, making it difficult for many to hear what is being said. The Retreat classes scheduled for October are on display and sign ups must be made by October 1<sup>st</sup>. We have not been getting much participation in these classes.

Today, we will be painting a bookmark after the meeting. The cost is \$1.00. This is Gateway Louie/Louise, celebrating our 40<sup>th</sup> Anniversary.

We have two Seminars scheduled for next year. The teachers are Bobbie Campbell and Cheryl Rol. If you are planning on taking these seminars, please vote on your choices. The classes that are picked will be displayed at the November meeting. You must pay for at least one day to hold your spot. Bobbie paints in acrylics and Cheryl paints in oils. You may paint on the surface of your choice with either of these teachers.

The Sherry Nelson Seminar is coming up soon and we still have a few openings left. Your boards need to be prepped before class. Use the sealer she recommends. No patterns will be given out before class. Oil paint pallets are included in your class fee. Class starts at 9:00 a.m., but do not arrive before 8:30 a.m. Sherry will have brushes, pattern packets, etc. for sale.

The projects brought in for Show 'n Tell were shown next by the person who painted them.

Mary Jo Kumer gave a report on Memory Boxes. The next M.B. paint-in at Lindell Bank will be on October 7<sup>th</sup>. There will not be one in November, but Ginger German will be teaching the paint-in in December. We need volunteers for next year. Donna Wessel will be teaching the April and August paint-ins. We have shipped 300 boxes so far this year,

Mary Jo mentioned that Gloria Falk had back surgery on Thursday, but got to come home on Friday. She is in a lot of pain and it will take about six months for recovery.

Linda Nelson and her friend, Cookie, donated the artificial flower arrangements that are on display today. Mary Jo will auction these off at this time and the proceeds received will benefit the Memory Box Program for postage.

Cheryll Wilburn informed us that we have one visitor today, Barb Ogden's daughter, Ginny. We have 36 members present today. Attendance prizes were donated by Millie Johnson, Kay Vuichard and Gloria Falk. Winners of these attendance prizes were: Joyce Miller, Judy Dodson, Marilyn Hartnett, Linda Lewis, Lynnette Horn and Lorie Reece.

Cheryll reminded everyone that dues are due by the November meeting and anyone running for an office must have their chapter and national dues paid by the election. Please let Cheryll know of any e-mail or phone changes.

Donna Wessel advised that she has set up another display at the library and has pictures. She encourages everyone to check with the library in their area and also set up a display.

Lorie reminded the Committee Chairs to let her know who served on their committee so she can order charms.

Sandra Reynolds said that \$37.00 was collected for the 50/50 drawing. That means that \$18.50 will go to the Memory Box Program and \$9.50 each to the two winners, which were Donna Wessel and Sandra Reynolds. Sandra said she needs brags for the Newsletter by October 20<sup>th</sup>.

If you are unable to attend the November meeting for election, you may vote by absentee ballot.

Just a reminder - Teachers bring your projects for Retreat to the November meeting to be voted on.

Barb Ogden mentioned that 40<sup>th</sup> Anniversary cupcakes are at the head table for everyone. Please help yourself.

With no further business, Mary Jo Kumer made a motion to close the meeting. This was seconded by Carol Rufkahr. The meeting adjourned at 2:30 p.m.

Respectfully submitted,

Jean Rogenhofer  
Recording Secretary

## Membership Chair Up-date



Well ladies, it's that time of year again to get our dues paid. Since this will be my last letter to you as your Membership Chairman, I would like to thank each and every one of you that has given me help throughout the years with your donations, assistance at the meetings etc. I want you to know I appreciate each of you so much. **I would also like to ask each of you to be prepared to pay your dues at the November meeting (or before).** Dec. 1 is the deadline for paying your dues, so that your name and information will appear in the yearly Calendar/Directory. Otherwise, it will have to be handwritten in by everyone. It's a lot of work to put this directory together and it would really help a lot by having your dues to me, in my hand, no later than Dec. 1.





## GATEWAY DECORATIVE ARTIST Official Request for 2015 Officers

**All nominees must have been a member for not less that 2 years immediately preceding the time of election and have attended 5 meetings.**

Please place a mark to indicate:

Not eligible,       Not interested at this time,       Interested, I would like to be called.

Signature \_\_\_\_\_

Print \_\_\_\_\_

Interested members please provide best contact times and phone numbers.

Day \_\_\_\_\_ Time \_\_\_\_\_ Phone Number \_\_\_\_\_

Day \_\_\_\_\_ Time \_\_\_\_\_ Phone Number \_\_\_\_\_

**Please send or give this completed form to: Jean Lindsey,  
Nominating Comm. Chair, 140 So. St. Charles St., Florissant, MO 63031**

~~~~~

### November Officer Elections

**We vote for:**

**Vice-President, Membership Chair, Secretary, Treasurer, and Newsletter Editor (1 year term)**

**If you know that you will not able to attend the meeting in November and would like to vote by absentee ballot, you will need to send me a self-addressed envelope to put your ballot in so I can mail you the Absentee Ballot.**

You would then need to mail the completed ballot back to me having ABSENTEE BALLOT on the outside. It will be opened when the ballots are being counted. I would need to receive your ballot before the November Meeting.

Jean Lindsey  
140 So. St. Charles St.  
Florissant, MO 63031  
jeanlinddey@att.net

## THOUGHTS FOR GOLD BRUSH NOMINATIONS



Did you know?

You, the individual chapter member, are the ignition switch that initiates the annual Gold Brush process. You play a very key role that culminates in December at the Christmas Party when the next Gold Brush Award recipient is announced. Your decision to write a name on the Gold Brush Nomination Form should be given as much careful thought and consideration as that of the committee whose solemn duty and responsibility it is to evaluate that nominee.

Just how well do you know the person you are thinking of nominating when it comes to their service to the chapter? Do you know how long they have been a chapter member? Do you know if they have ever served on the board – in what positions, for how long, how many times? Have they chaired or served on any committees? How often do they attend chapter meetings, support seminars, or workshops? Do you see them helping to set up for events/activities? Do you see them staying behind to help clean up after a function? Do they regularly volunteer to teach a workshop, retreat class, paint-in project, make-it-take-it? Do they support our chapter charities? Would you consider them a “mover and a shaker”? Do they stand out as a doer and a team player? Are they a leader – someone you can admire and respect? Are they a positive promoter of Gateway Decorative Artists? Do they have a positive and supportive attitude toward the SDP? Do they support the National Museum of Decorative Painting? How many check marks can you put in their plus column? If the answer is many, you are probably on the right track.

Do you know how or from whom to obtain any of the above information you need in order to make an informed decision? Did you know that the Membership Chair keeps a card file on every current, active chapter member that lists a lot of the above information? A simple phone call could answer any questions you might have. Another source would be to talk to other members who have served in the same board position, or committees as your proposed nominee. You have a number of alternative methods of accessing as well as assessing the chapter service and character traits of your candidate. I urge you to avail yourself of them before writing a name on the Gold Brush Nomination Form.

The Gold Brush Award is the highest honor that the chapter can bestow upon a member. It is a once in a lifetime award. Therefore, in order to preserve the integrity and prestige associated with the award, it is important that only the most worthy and deserving member ultimately be chosen. When the next Gold Brush Award recipient is announced, those in attendance should be able to conclude unanimously that the goal has been fulfilled.

Cheryll Wilburn  
Gold Brush Chair

# GOLD BRUSH AWARD

## Gold Brush Nomination Process:

To nominate someone for this high honor, fill out the form below.

The Committee will research your nominee’s qualifications based on information you and others give us. If you know of a specific service your nominee has performed, please state it briefly. If more information is needed a Committee member will contact you.

Please be conscientious in your choice and remember that this is not a popularity contest. A nomination box will be set up at the September and November meeting with extra forms available. **Please place your signed form into a sealed envelope and MARK IT GOLD-BRUSH**, and either drop it in the Gold Brush Award box, or mail to:

Cheryll Wilburn  
410 English Manor Dr.  
Wentzville, MO. 63385



### PAST *Gold Brush Award* Recipients

- 1987 Joycelynn Smutz
- 1988 Judi Krause
- 1989 Bonnie Stout
- 1990 Gerry Klein
- 1991 Bobbie Gray
- 1992 Arlene Siebert
- 1993 Barb Ogden
- 1994 Carolyn Bacon
- 1995 Jeanne Abraham
- 1996 Annette Dozier
- 1997 Gloria Falk
- 1998 Jan Rosenburg
- 1999 Mary Jane Jett
- 2000 Ellen Rohne
- 2001 Ruth Ann Thompson
- 2002 Toni Dosser
- 2003 Debbie Christensen
- 2004 Laura Heathcote
- 2005 Mary McDevitt
- 2007 Mary Jo Kumer
- 2008 Jean Rogenhofer
- 2009 Vada Galvan
- 2010 Lorie Reece
- 2011 Donna Wessel
- 2012 Cheryll Wilburn
- 2013 Ginger German

## GOLD BRUSH NOMINATION FORM

**Form must be signed to validate nomination**

**Each chapter member is allowed to nominate only one candidate, which will be kept confidential. My nominee for the Gold Brush Award in 2014 is:**

Reason: (state briefly—specific Chapter and/or community service)

\_\_\_\_\_

Signature \_\_\_\_\_ Phone No: \_\_\_\_\_

**OFFICIAL SAMPLE BALLOT**

**GATEWAY DECORATIVE ARTIST**

**Elections of Officers for 2015**

Please vote for only one person per position by placing an X to right of the name.

**Vice- President**

**Ellen Rohne**

Write in:

**Membership Chair**

**Vada Galvan**

Write in:

**Newsletter Editor**

**Marilyn Hartnett**

Write in:

**Recording Secretary**

**Debbie Finklang**

Write in:

**Treasurer**

**Donna Wessel**

Write in:

S  
A  
M  
P  
L  
E



**At our September meeting we celebrated our 40 Year Anniversary as Gateway Decorative Artists.**



**This will be my last newsletter as your Newsletter Editor. I will be moving to Louisville, KY in the near future and am giving up my position to a new officer. I have enjoyed putting together all of the news and events for our Chapter and wish your new editor the best of luck.**



## Charity Corner

### TURNING POINT needs our help.

This is a very busy time for the shelter. Please, if you can find it in your heart to give just one item from these lists – it would be a great help to the women and children that desperately need it. If you can do more, that would be absolutely wonderful. How sad that they have to leave their homes with just the clothes on their backs. This is also the time of year when we are thinking of those people who are less fortunate than us. Let's surprise the ladies at the shelter with arm loads of stuff. Thank you for all you have done in the past and continue to do.

#### **Things that are regularly needed:**

Toilet paper  
Paper Towels  
Creme Rinse  
Dish soap

#### **Holidays are coming we could use:**

Robes. Slippers.  
Shampoo, Bath sets  
Cross word books  
Puzzles  
Watches  
Pajama's  
All sizes needed in: robes, slippers & PJ's



#### **PALS WISH LIST FOR NOVEMBER and al- ways.....**

**#1: No Scent Low  
Dust Cat litter**

**#2: Clean newspaper – no slick  
ads**

*With the number of animals they have  
housed there, you can imagine how  
much of this stuff they go through on a*



#### **Turning Point also needs these items for the children for school**

**School Supplies, backpacks  
crayons  
pencils  
small pencil sharpeners  
safety scissors (no points)  
folders (2 pockets)  
subjects dividers for binders  
zip bags for pencils  
wide lined paper  
tissues**





# Society of Decorative Painters

## 2015 MEMBERSHIP FORM

### 1 MEMBER OPTIONS PLEASE CHECK APPROPRIATE BOXES.

FOR FASTER SERVICE, pay online at [DECORATIVEPAINTERS.ORG](http://DECORATIVEPAINTERS.ORG).

#### UNITED STATES

- \$50 INDIVIDUAL (\$55 after 12/1/14)  
 \$80 BUSINESS (\$95 after 12/1/14)  
 \$30 HOUSEHOLD (\$35 after 12/1/14)\*  
 \$30 TRIAL\*\*  
 \$15 STUDENT (\$20 after 12/1/14)\*\*\*

#### CANADA (U.S. FUNDS)

- \$70 INDIVIDUAL (\$75 after 12/1/14)  
 \$50 ONLINE INDIVIDUAL (\$55 after 12/1/14) †  
 \$100 BUSINESS (\$105 after 12/1/14)  
 \$70 ONLINE BUSINESS (\$75 after 12/1/14) †  
 \$30 HOUSEHOLD (\$35 after 12/1/14)\*  
 \$30 TRIAL\*\*  
 \$15 STUDENT (\$20 after 12/1/14)\*\*\*

#### INTERNATIONAL (U.S. FUNDS)

- \$80 INDIVIDUAL (\$95 after 12/1/14)  
 \$50 ONLINE INDIVIDUAL (\$55 after 12/1/14) †  
 \$110 BUSINESS (\$115 after 12/1/14)  
 \$80 ONLINE BUSINESS (\$85 after 12/1/14) †  
 \$30 HOUSEHOLD (\$35 after 12/1/14)\*  
 \$30 TRIAL\*\*  
 \$15 STUDENT (\$20 after 12/1/14)\*\*\*

CHECK IF 2016 MEMBERSHIP PAYMENT IS INCLUDED.

\* HOUSEHOLD MEMBERSHIP: An additional member sharing the same address as an Individual or Business member. Member online only. No printed *Decorative Painter* magazines will be mailed to you.

\*\* TRIAL MEMBERSHIP: A one-year membership for a new member or anyone who has not been a member since 2012. Member online only. No printed *Decorative Painter* magazines will be mailed to you.

\*\*\* STUDENT MEMBERSHIP: Students enrolled full-time in an accredited educational institution, including accredited home-schoolers. Member online only. No printed *Decorative Painter* magazines will be mailed to you. ATTACH DOCUMENTATION OF ENROLLMENT.

† ONLINE CANADA AND INTERNATIONAL MEMBERSHIPS: Will be able to view *The Decorative Painters* magazine, online only. No printed *Decorative Painter* magazines will be mailed.

### 2 ONLINE 2015 BUSINESS DIRECTORY

BUSINESS MEMBERS: Check all boxes that apply. FREE LISTINGS with your business membership. Visit [DECORATIVEPAINTERS.ORG](http://DECORATIVEPAINTERS.ORG) to submit up to one-hundred-word description of your business.

- AUTHOR  DISTRIBUTOR/WHOLESALE  MANUFACTURER/IMPORTER  RETAILER  TRAVEL-TEACHER  
 DESIGNS AND/OR PAINTING SKILLS FOR HIRE  HOME STUDIO  PUBLISHER  TEACHER

### 3 MEMBER PROFILE (Please Print)

NAME \_\_\_\_\_ MEMBER NO. (If Renewal) \_\_\_\_\_

HOUSEHOLD MEMBER NAME \_\_\_\_\_ MEMBER NO. (If Renewal) \_\_\_\_\_

BUSINESS NAME \_\_\_\_\_

MAILING ADDRESS \_\_\_\_\_

CITY \_\_\_\_\_ STATE/PROV. \_\_\_\_\_ ZIP/POSTAL CODE \_\_\_\_\_ COUNTRY \_\_\_\_\_

EMAIL \_\_\_\_\_ WEBSITE \_\_\_\_\_

HOME PHONE (\_\_\_\_) \_\_\_\_\_ CELL PHONE (\_\_\_\_) \_\_\_\_\_ FAX (\_\_\_\_) \_\_\_\_\_

RECRUITED BY \_\_\_\_\_ MEMBERSHIP # \_\_\_\_\_

I WOULD LIKE TO GIVE  \$5  \$10 OR \$ \_\_\_\_\_ to the SDP Foundation which supports the International Museum of SDP (IMSDP), provides scholarships and supports other SDP Foundation initiatives.

I WOULD LIKE TO GIVE  \$5  \$10  \$25  \$50 OR \$ \_\_\_\_\_ to the Society of Decorative Painters.

### 4 PAYMENT INFORMATION CHECK OR MONEY ORDER IN U.S. FUNDS ONLY

Check  Money Order CREDIT CARD:  DISCOVER  MASTERCARD  VISA TOTAL \_\_\_\_\_

CARD NUMBER \_\_\_\_\_ EXPIRATION DATE \_\_\_\_\_

SIGNATURE \_\_\_\_\_

YES! This is a gift membership from \_\_\_\_\_ MEMBER NO. \_\_\_\_\_

MAKE CHECKS PAYABLE TO: SDP

CREDIT CARD PAYMENT: call (316) 269-9300 ext. 105

FAX MEMBERSHIP FORM TO: (316) 269-9191

### IMPORTANT

Membership year is Jan. 1 to Dec. 31, 2015. You may join any time of the year and receive all applicable SDP benefits and back issues of *The Decorative Painter* magazine for that year. An additional \$5 late fee will be required for payments postmarked after December 1, 2014. This fee does not apply to new members.

**YOUR 2015 MEMBERSHIP CARD WILL ARRIVE WITH ISSUE NO. 1, 2015, OF THE DECORATIVE PAINTER.**

393 N. McLean Blvd., Wichita, KS 67203-5968 • 316-269-9300 Fax: 316-269-9191 • [DECORATIVEPAINTERS.ORG](http://DECORATIVEPAINTERS.ORG)

# Gateway Decorative Artists Membership Form

**Membership in the Chapter is OPEN ONLY to persons who are dues-paying members to SDP**

Name \_\_\_\_\_ New Member \_\_\_\_\_ Renewal \_\_\_\_\_

Address \_\_\_\_\_

City \_\_\_\_\_ State \_\_\_\_\_ Zip Code \_\_\_\_\_

Phone \_\_\_\_\_ Email \_\_\_\_\_

Birth Date \_\_\_\_\_ SDP Membership # \_\_\_\_\_ (include copy of SDP card)  
Member of other chapters \_\_\_\_\_

Check all that Apply:

Individual Member \_\_\_\_\_ Teacher \_\_\_\_\_ Business Member \_\_\_\_\_ Name of shop \_\_\_\_\_

Certification: MDA \_\_\_\_\_ CDA \_\_\_\_\_ TDA \_\_\_\_\_

Preferred Painting Medium: Oil \_\_\_\_\_ Acrylic \_\_\_\_\_ Watercolor \_\_\_\_\_ Other \_\_\_\_\_

What year did you start painting \_\_\_\_\_

Favorite Artists \_\_\_\_\_

**Annual Dues are \$20, payable by Dec. 1**

Please make check payable to Gateway Decorative Artists  
Mail to: Cheryl Wilburn, 410 English Manor Drive, Wentzville, Mo. 63385



## Gateway Gazette

Sandra Reynolds  
Newsletter Editor

Contact Info:  
[www.newsletter@gatewaydecorativeartists.com](http://www.newsletter@gatewaydecorativeartists.com)  
618 979-5222