



# Gateway Gazette

[www.gatewaydecorativeartists.com](http://www.gatewaydecorativeartists.com)

[www.facebook.com/GatewayDecorativeArtists](https://www.facebook.com/GatewayDecorativeArtists)

Volume 42 Issue 4

September 2015

## CONTENTS

Calendar.....	2
President's Message.....	3
Vice President Report.....	4
Programs.....	5-6
Membership.....	7
Pet Rescue.....	7
Nominating Committee.....	8-9
Bylaws Committee.....	10-12
Minutes.....	13
Turning Point.....	14
Birthdays/Greetings.....	15
Gold Brush Award.....	16-17
Membership Renewal.....	19
SDP Renewal Form.....	20
Treasurer's Report.....	21

## Gateway Chapter Meeting

**Maryland Heights Community Center**  
**2344 McKelvey Road, Maryland Heights, MO**

**314-738-2599**

**Meeting Starts at 1:00 p.m.**

**Doors Open at 12:00 noon**

Directions from I-270

Dorsett Rd. west  
McKelvey Rd. right  
Ameling Rd. right  
McKelvey Rd. left

### *Refreshments*

*Peggy Araki*  
*Mari Hart*  
*Mary Jo Kumer*  
*Joan Love*  
*Ann Mathieu*  
*Judy Mayo*  
*Laura Mayo*  
*Linda Nelson*  
*Carol Rufkahr*  
*Barb Stanfield*



**PROGRAM FOR**

**SEPTEMBER  
MEETING**

**GUEST ARTIST**

**LISA OBER**

## BOARD MEMBERS

### President

**Lorie Reece** 314-971-0190  
 president@gatewaydecorativeartists.com

### Vice President

**Ellen Rohne** 636-240-1684  
 vicepresident@gatewaydecorativeartists.com

### Program Chair

**Barb Ogden** 636-928-5503  
 program@gatewaydecorativeartists.com

### Membership Secretary & Publicity

**Jean Lindsey** 314-921-0425  
 membership@gatewaydecorativeartists.com

### Recording Secretary

**Debbie Finklang** 636-290-6102  
 secretary@gatewaydecorativeartists.com

### Treasurer

**Donna Wessel** 314-428-8226  
 treasurer@gatewaydecorativeartists.com

### Newsletter Editor

**Marilyn Hartnett** 636-332-0061  
 newsletter@gatewaydecorativeartists.com

## CALENDAR OF EVENTS

- September 1 Memory Box Paint-In Lindell Bank
- September 13 Chapter Meeting Maryland Hts.
- September 19 Ellen Rohne Workshop
- October 13 Memory Box Paint-In Lindell Bank
- October 16-18 Cheri Rol Seminar
- November 8 Chapter Meeting Maryland Hts.
- December 1 Memory Box Paint-In Lindell Bank
- December 6 GDA Christmas Party

## SEPTEMBER 19

PAINT WITH ELLEN



### Area Representatives

South County	Joan Love	314-842-7288
North County	Jean Lindsey	314-921-0425
West County	Maureen Wasserman	636-227-2843

*If you have information to pass on to the Chapter such as news of an illness, congratulations, etc., please contact an area rep or your Membership Chairman.*

### Standing Committee Chairs

Refreshments	Marilyn Todd
Gold Brush Award	Janie Parisi
Librarian	Barb Ogden
Historian	Marilyn Hartnett
Ways and Means	Gloria Falk
Parliamentarian	Liz McClintock

### Special Committee Chairs

Christmas Party	Barb Ogden
Memory Box Program	Gloria Falk
	Mary Jo Kumer
Webmaster	Josée Laferriere

## Check List for Meeting:

- Refreshment, if you are on the committee.
- Cash for 50/50
- Pet Rescue
- Donations
- Turning Point
- Donations
- Painted Memory Boxes.



## **PRESIDENT— Lorie Reece**

Hi Everyone,

What a wonderful summer we have had and it is zooming by us. I hope everyone has had wonderful vacations and some painting time. I have been trying to finish my UFO's (unfinished objects)! I have actually been doing quite well!!

Don't forget to make the September meeting. You will notice in the newsletter it is time to run for office again. This will be President, Program Chair, and Newsletter Editor. If you are interested, please make sure to speak up at the meeting. Think about it as we will be voting on those in the November meeting. You will also need to be paid up with SDP to be nominated. Being on the Board opens your eyes to a lot of behind the scene business and getting up close with the members.

We also have some exciting news about retreat. Ellen will let us know all the details at the next meeting. Also don't forget to sign up for her Sharing-Workshop seminar coming up on the 19th September at Quality Testing. It is a fun, no stress workshop and what an adorable project!

I will also need to ask 3 members to volunteer for the Gold Brush committee. Otherwise, I will be asking at the meeting. It really is not a big deal at all. Just need input and thoughts. You will not have to go anywhere to meet or discuss this. It can all be done on the phone if necessary.

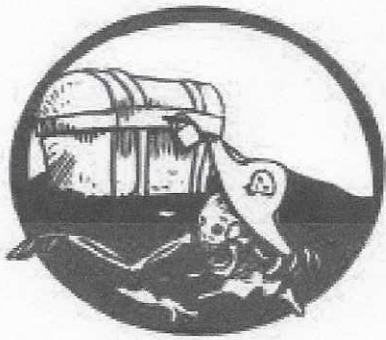
Cheri Rol seminar is Oct. 16, 17, 18. Although it is oils (she is the first oils teacher I took from) this is a very satisfying class. She is a wonderful teacher. If you want to try oils for the first time, she is the teacher to learn from.

There are a few members that have not signed up for refreshment committee. We only have one more meeting, in November. It would be appreciated if you would bring a little something. Nothing big. **YOU KNOW WHO YOU ARE!**

I look forward to seeing everyone at the next chapter meeting. See you then.



VICE PRESIDENT — ELLEN ROHNE



# Retreat 2016

Save The Date  
September 23-25

Gateway Decorative Artists  
33rd Annual Retreat

## A Pirates Boory

TODDHALL Retreat  
and Conference Center  
Columbia, Illinois

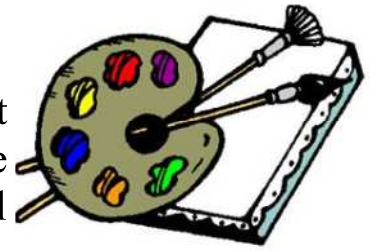
Find out more at the Sept. Meeting





## PROGRAM—BARB OGDEN

It cannot possibly be time for back-to-school...at least that is what my mind keeps telling me. However the commercials and ads in the paper say otherwise as well as the school buses in the neighborhood.



Hope everyone has enjoyed their summer and warm weather.

A couple of reminders. Ellen Rohne's Sharing Workshop is scheduled for September 19. Those who are already registered can come by the seminar table and pick up your surface and prep instructions. There is still room in the workshop if you are interested.

The Cheri Rol Seminar is scheduled for October 16, 17, and 18. There is still time to register. If you have not already done so those of you who are registered need to let me know if you will need surfaces from Cheri so I can get them ordered.

As far as 2016 goes we will be sponsoring one seminar, Mark Polomchak and one Sharing Workshop with Gloria Falk. I hope to have samples from Mark at the meeting for you to vote on.

Mark Polomchak's Website: [www.palomchak.com/packets.php](http://www.palomchak.com/packets.php)

I know it seems too soon to be thinking about the Holidays, however we will be planning our Christmas Party this next month. We will gather at Andre's on Telegraph Rd on December 6. Mark your calendar.

Our program this month is featuring Lisa Ober. She is a renowned portrait painter who specializes in oils and in pastel. Go on line and check out her work at the Ober Anderson Gallery in Kirkwood. Her pieces are amazing. She is going to introduce us to pastels and give us a chance to try out the medium.

See you Sunday, September 13, Barb

**PROGRAM — Barb Ogden (Continued)**

**September Program—Lisa Ober, Guest Artist**

Lisa Ober is a professional portrait artist specializing in oil and pastel portraits. A St. Louis native, she began painting portraits in 1983, and intended to pursue a career in commercial illustration. But, by 1987 her growing list of clients plus her love of painting people led her to a full time career as a portrait painter. Lisa is going to lecture on pastel painting and provide us with some hands-on experience. **Cost is \$3.00**



**Cost is \$3.00**

**Cheri Rol Seminar — October 16, 17, 18 — Oils**  
**Cost is \$60 per day for members \$65 for non-members. (Registration for non members is open)**



**Gateway Decorative Artists Program Registration Form**



Program \_\_\_\_\_ Date \_\_\_\_\_ Date \_\_\_\_\_ Date \_\_\_\_\_  
Class Fee \_\_\_\_\_ Surface/Supply Fee \_\_\_\_\_  
Name \_\_\_\_\_ Phone \_\_\_\_\_  
Address \_\_\_\_\_ City/Zip \_\_\_\_\_  
Email \_\_\_\_\_ Amount \_\_\_\_\_ Cash \_\_\_\_\_ Check \_\_\_\_\_

**CHECK HERE IF YOU AGREE TO HAVING YOUR PICTURE IN OUR PUBLICATIONS OR FACEBOOK** \_\_\_\_\_

Send to Barbara Ogden, 1424 Cave Springs Estate Drive, St. Peters, MO 63376

For Questions call: 636-928-5503 or email: [program@gatewaydecorativeartists.com](mailto:program@gatewaydecorativeartists.com)

**MEMBERSHIP — JEAN LINDSEY**



Just want to let everyone know the pin exchange will be on Sept 13, 2015. Have your painted pin in a little gift bag with your name inside (saying who the pin is from).

You still have two (2) more meetings to sign up for the 2016 Secret Pal Exchange.

If you know of any member that is sick or has been hospitalized, please let me know so I can send cards.

Dues are up for renewal. Anyone running for Office must have National and Gateway dues paid for by November 8. I will be collecting dues at the meeting. (Renewal forms are at the back of this newsletter.)

I will have some **free books and wood at the meeting**, please help yourself.

Those responsible for refreshments for the November meeting are Liz McClintock, Judy West, Mary Jo Kumer, Joan Reilly, Lynette Horn, Judy Dodson, Michelle Senn, Mari Hart. If you haven't signed up to bring refreshments this year, please get in touch with someone on the committee. ~~**Jean Lindsey, Membership**

**PET RESCUE WISH LIST**

**Monetary donations**

**Hanging pet cage bowls**

**Collars**

**Leashes**

**Pet Beds**

**Kongs**

**Pet Taxi's**

**Crates**

**Litter pans**

**Litter scoops**

**Dry or wet cat/dog food**



**They ask that these items be new, or barely used and clean.**

**Thank you for whatever you can do.**



**GATEWAY DECORATIVE ARTIST**

**Official Request for 2016 Officers**

The offices up for election are President, Program Chair, and Newsletter Editor. All nominees must have been a member for not less than 2 years immediately preceding the time of election, have attended 5 meetings and have dues paid to SDP and Chapter by November meeting.

Please place a mark to indicate:

Not eligible.     Not interested at this time.     Interested, I would like to be called.

Signature \_\_\_\_\_

Print \_\_\_\_\_

Interested members please provide best contact times and phone numbers.

Day \_\_\_\_\_ Time \_\_\_\_\_ Phone Number \_\_\_\_\_

Day \_\_\_\_\_ Time \_\_\_\_\_ Phone Number \_\_\_\_\_

**Please send or give this completed form to: Jean Lindsey,  
Nominating Committee Chair, 140 So. St. Charles St., Florissant, MO 63031**

**November Officer Elections**

**We vote for President, Program Chairman and Newsletter Editor**

If you know that you will not be able to attend the meeting in November and would like to vote by absentee ballot, you will need to send me a self-addressed envelope to put your ballot in so I can mail you the Absentee Ballot.

You would then need to mail the completed ballot back to me having ABSENTEE BALLOT on the outside. It will be opened when the ballots are being counted. I would need to receive your ballot before the November meeting.

Jean Lindsey  
140 So. St. Charles St.  
Florissant, MO 63031  
jeanlinddey@att.net



## **ARTICLE VII: DUTIES OF ELECTED OFFICERS**

**1. The President's duties shall be:**

- a. Preside over Chapter meetings.
- b. Preside over meetings of the Executive Board and be responsible for orientation of new Board Members.
- c. Appoint a Parliamentarian with Board approval. It should be someone in which the President has confidence. (See Article XI for Parliamentarian duties.)
- d. Sign checks in the absence of the Treasurer.
- e. Ascertain that all required reports and correspondence are sent to the SDP
- f. Perform such other duties as usually pertain to the office.
- g. Be an ex-officio member of the Executive Board for the year following the elected term, serving in a non-voting advisory capacity, and must be a current year member.
- h. Appoint all Standing and Special Committee Chairs, with Board approval. The President may serve in an unofficial capacity on all committees with the exception of the Nominating Committee and Gold Brush Award Committee.
- i. Appoint tellers to count election ballots.
- j. Keep accurate records of office expenditures and receipts for not less than the prior three (3) years.

**3. The Program Chairman's duties shall be:**

- a. To procure educational or related programs for each meeting.
- b. To arrange and oversee seminars and special educational events.
- c. To arrange and procure rooms for all Chapter meetings and seminars.
- d. Keep accurate records of office expenditures and receipts for each planned program for not less than the prior three (3) years.

**7. The Newsletter Editor's duties shall be:**

- a. Ensure newsletter is published and delivered at least ten (10) days prior to established meetings but not more than fourteen (14) days. The delivery of said newsletter will be email and only sent USPS when email is not an option.
- b. Provide to members electronically or via flyers, information relative to special events, seminars, etc.
- c. Keep accurate records of expenditures and receipts for not less than the prior three (3) years.
- d. Mail one copy of all publications to Chapter's department of the SDP.
- e. Be responsible for getting information to the Web Editor in a timely manner.
- f. Keep one copy of each newsletter since becoming and affiliated Chapter.
- g. Procure a membership address list from the Membership Secretary at the first Board meeting and updates as they occur.

**SEE ITEM 8. IN ARTICLE VII OF THE BYLAWS FOR END OF YEAR REPORTING FOR ALL OFFICERS.**

### **2015 By-Law Committee**



Because of changes made to the Committees section during our By-Law discussions on June 14, 2015 we would like to recommend we discuss and vote on changing the order of the lettering to the Committees in By-law Article IX #1 d-f, to match the order of the wording in Article IX #1.

**Current** By-Law Article IX #1 d: Librarian; e. Historian and f. Charity Committee.

**Proposed** change: Article IX #1 d: Charity Committee; e. Librarian and f. Historian.

### **BYLAWS REVISIONS**

**Changes made to Gateway by-laws as revised as of June 14, 2015. The completed updated text of our Standing Rules/By-Laws will be published in our 2016 Calendar/Directory.**

Standing Rules #1:

Membership dues, in the amount of \$20 annually, shall be due December 1 for the following calendar year and will be delinquent after December 31.

- a. Individual members \$20 Annually

Standing Rule #2:

Trial membership - \$10. A one - year membership in the current calendar year for a new member or anyone who has not been a member for the last three (3) years. Trial membership will have no voting privileges.

SDP membership is required.

Old Standing Rule-#2 changed to #3; #3 changed to #4; #4 changed to #5; #5 changed to #6; #6 changed to #7.

By-Law Article III #2:

a: Individual member

b: Trial member

By-Law Article V - #4:

The privileges of making motions and voting shall be limited to Individual members. Trial members can participate in the discussion.

By-Law Article VI - #2:

All nominees for elected offices shall come from the general membership. All nominees must have been members for not less than two years immediately preceding the time of election and have attended five (5) meetings. All nominees shall have computer access for email capability. Nominees running for President should have previous Gateway Board experience.

By-Law Article VI - #4:

Nominations shall normally take place at the September and November meetings, following the report of the Nominating Committee, as provided in Article IX, Section 1 a. Nominations from the floor for each office shall be accepted at each of these meetings. Anyone accepting the nomination in September or November shall have renewed both SDP and Chapter dues prior to the November meeting. A member may only run for one office at a time. A plurality vote (largest amount of votes given to one (1) candidate is required to elect if there is more than one (1) candidate for office. Voting shall be by ballot.

By-Law Article VII - #2 e: eliminated

By-Law Article VII - #3 c:

To arrange and procure rooms for all chapter meetings, seminars and Special Educational Events.

By-Law Article VII - #6 – d:

Present a statement of account in each newsletter of the Chapter and a year-end statement as outlined in Standing Rule #3.

By-Law Article IX - #1:

Standing Committees/Positions shall be the Nominating Committee, Refreshment Committee, Gold Brush Award Committee; Charity Committee, Librarian and Historian.

By-Law Article IX - #1 a:

Nominating Committee – This committee shall consist of the appointed chair and any additional persons needed who shall prepare a slate for the election of officers. The Nominating Chair shall be responsible for printing and issuing ballots. Nominees must be members, and meet the qualifications as stated in Article VI - #2, #3 & #4 and have given prior consent to the Nominating Committee. The Chair is responsible for checking with the Membership Secretary to verify that nominees are eligible members. The Chair will prepare a list of eligible voting members and prepare a sign-in list for the day of election. All ballots and tally sheets shall be given to the current President immediately following the voting to be held until after the installation of officers.

By-Law Article IX - #2 b:

Standing Rules and Bylaw Committee – as outlined in Standing Rule #6.

2015 Bylaws Committee Members:

Gloria Falk, Deb Finklang, Michelle Senn and Donna Wessel.



## RECORDING SECRETARY, MINUTES — Debbie Finklang

### GDA Meeting Minutes

The meeting was called to order on June 14, 2015 at 1:00 p.m. by President Lorie Reece.

The April Meeting Minutes were approved as written.

President Lorie Reece and other SDP Conference attendees reported that they had a good time. They stated that there were fewer booths and the location will be moved next year.

The invocation was given by Jeanne Abraham.

The Program Chairman, Barb Ogden, updated the attendees on the following:

#### **Seminars:**

Bobbie Campbell. Details were given for preparing surface for class. Base-coating and pattern application are in the instructions. Don't use Magic Mix. Sealer- DecoArt Americana Multipurpose is available at Joann's at Mid-Rivers Mall in St. Peters. Wood Sealer must be used. Bring prep paint so that corrections can be made. Don't forget to bring your lunch. The Friday class is at Lindell Bank and the other 2 classes are at Quality Testing.

Cheri Rol classes in Oct. 16-18 – there are spots still available.

**Sharing Workshops** – Ellen's Santa Claus Sharing-Workshop is September 19; there are available openings for this workshop.

**After meeting project:** Lynette Horn will teach her "Magnolia" using Traditions paints for this meeting.

**Memory Box:** July 7 is the next paint-in. Project is an Angel Teddy Bear. Donna Wessel will teach the August paint-in. Teachers are needed to teach the September and October Memory Box.

**The Membership Secretary,** Jean Lindsey, reported that there were 24 members and one guest in attendance: She also reminded everyone who signed up for the pin exchange to bring their pin to the September meeting. If you are not able to attend, please send your pin with someone else.

**The Secret Pal** activity will start in January 2016 and will continue throughout the year.

The following door prizes were donated: a patriotic shirt painted by Gloria Falk; Wood Heart, a peelable palette and wood bird house. The door prize winners were: Cheryl Wilburn, Joan Love, Peggy Araki, and Jean Rogenhofer.

Thirty-Seven dollars was collected in the **50/50 raffle**. Marilyn Hartnett and Liz McClintock were the winners. Both donated their winnings to Memory Box Program.

**The Treasurer's Report** was presented by Donna Wessel and accepted as written. Donna shared pictures from the SDP Convention.

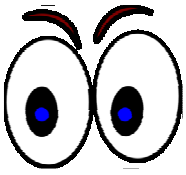
**President** Lorie Reece informed the attendees that Peggy Araki and Carol Rufkahr have painted with Nancy Medina. St. Louis is Nancy's home city and Classes are available in St. Louis at the October Artists Council. The flyer was made available at the front table.

Gloria Falk reported on the **Bylaws** changes and updates as presented by the Bylaws Committee. They were discussed and approved.

**A motion to close the meeting** was made by Mary Jo Kumer and Gloria Falk seconded the motion. The meeting was adjourned and preparations were made for the after-meeting paint-in.



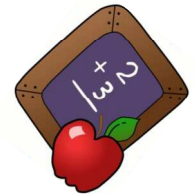
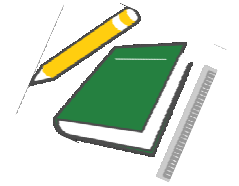
# CHARITY CORNER — Gloria Falk, TDA, Ways n' Means Chairman



**HAVE YOU SEEN THIS?** The Chapter received recognition in the latest issue of *The Decorative Painter* (P.13) for the Mother's Day Boxes we collected for and gave to the women at Turning Point. Thank you to all who donated toward this effort.

## Turning Point needs:

Always need bathroom tissue and paper towels!  
They would like to have some small glue guns with refills for the women to make and recycle things.



- School Supplies
- Plain #2 pencils (**not Dixon brand**)
- 24 count crayons
- Scissors
- Bottles of school glue
- Elmer's glue sticks
- Dry erase markers
- Pocket folders (plain colored)
- 70 pg. ,wide-ruled spiral notebooks
- Disinfectant wipes

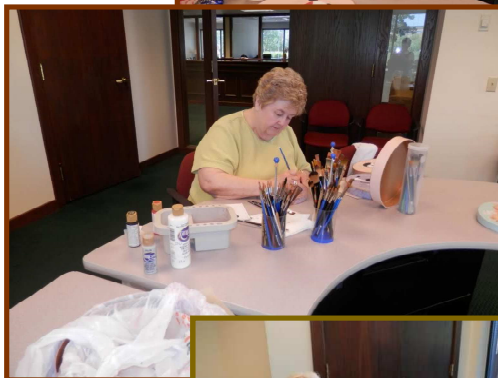
Barb Ogden



Gloria Falk



Marilyn Todd



Joan Love

## MEMORY BOX HEROS



Marilyn McDonald



Ingrid Oertli



& Happy  
Birthday!



Kay Vuichard

**September**

- 4 Lovella Mauer
- 20 Josée Laferriere
- 21 Lorie Reece
- 22 Maureen Wasserman
- 29 Lynette Horn

**October**

- 19 Joan Reilly



*Our Deepest  
Sympathy*

*To Judy Dodson whose father-in-law passed away on June 12. He was 100 years and 8 months at the time of his death.*

Thank you to everyone who sent cards and emails upon the death of my Mom. It was very heart warming and consoling to have so many prayers. What a great group of friends! Barb Ogden

**CHECK OUT THESE SITES FOR USEFUL TIPS**

[www.lindacoulter.com](http://www.lindacoulter.com)

[creativeartslifestyle.com](http://creativeartslifestyle.com)

[creativeartslifestyle.com/.../bobbie-campbell.html](http://creativeartslifestyle.com/.../bobbie-campbell.html)

[cherirol.com](http://cherirol.com)

# THOUGHTS FOR GOLD BRUSH NOMINATIONS

## Did you know?



You the individual chapter member, are the ignition switch that initiates the annual Gold Brush process. You play a very key role that culminates in December at the Christmas Party when the next Gold Brush Award recipient is announced. Your decision to write a name on the Gold Brush Nomination Form should be given as much careful thought and consideration as that of the committee whose solemn duty and responsibility it is to evaluate that nominee.

Just how well do you know the person you are thinking of nominating when it comes to their service to the chapter? Do you know how long they have been a chapter member? Do you know if they have ever served on the board — in what positions, for how long, how many times? Have they chaired or served on any committees? How often do they attend chapter meetings, support seminars or workshops. Do you see them helping to set up for events/activities? Do you see them staying behind to help clean up after a function? Do they regularly volunteer to teach a workshop, retreat class, paint-in project, make-it-take-it? Do they support our chapter charities? Would you consider them a “mover and a shaker”? Do they stand out as a doer and a team player? Are they a leader — someone you can admire and respect? Are they a positive promoter of Gateway Decorative Artists? Do they have a positive and supportive attitude toward the SDP? Do they support the National Museum of Decorative Painting? How many check marks can you put in their plus column? If the answer is many, you are probably on the right track.

Do you know how or from whom to obtain any of the above information you need in order to make an informed decision? Did you know that the Membership Chair keeps a card file on every current, active chapter members that lists a lot of the above information? A simple phone call could answer any questions you might have. Another source would be to talk to other members who have served in the same board position, or committees as your proposed nominee? You have a number of alternative methods of accessing as well as assessing the chapter service and character traits of your candidate. I urge you to avail yourself of them before writing a name on the Gold Brush Nomination Form.

The Gold Brush Award is the highest honor that the chapter can bestow upon a member. It is a once in a lifetime award. Therefore, in order to preserve the integrity and prestige associated with the award, it is important that only the most worthy and deserving member ultimately be chosen. When the next Gold Brush Award recipient is announced, those in attendance should be able to conclude unanimously that the goal has been fulfilled.

**Janie Parisi, Gold Brush Chair**



# GOLD BRUSH AWARD

*Past  
Gold Brush Award  
Recipients*

- 1987 Joycelynn Smutz
- 1988 Judy Krause
- 1989 Bonnie Stout
- 1990 Gerry Klein
- 1991 Bobbie Gray
- 1992 Arlene Siebert
- 1993 Barb Ogden
- 1994 Carolyn Bacon
- 1995 Jeanne Abraham
- 1996 Annette Dozier
- 1997 Gloria Falk
- 1998 Jan Rosenburg
- 1999 Mary Jane Jett
- 2000 Ellen Rohne
- 2001 Ruth Ann Thompson
- 2002 Toni Dosser
- 2003 Debbie Christenson
- 2004 Laura Heathcote
- 2005 Mary McDevitt
- 2007 Mary Jo Kumer
- 2008 Jean Rogenhofer
- 2009 Vada Galvan
- 2010 Lorie Reece
- 2011 Donna Wessel
- 2012 Cheryl Wilburn
- 2013 Ginger German
- 2014 Janie Parisi

## Gold Brush Nomination Process:

To nominate someone for this high honor, fill out the form below.

The Committee will research your nominee's qualifications based on information you and others give us. If you know of a specific service your nominee has performed, please state it briefly. If more information is needed a Committee member will contact you.

Please be conscientious in your choice and remember that this is not a popularity contest. A nomination box will be set up at the September and November meeting with extra forms available. Please place your signed form into a sealed envelope and **MARK IT GOLD BRUSH**, and either drop it in the Gold Brush Award box, or mail it to:

Janie Parisi  
2190 Kohn Road  
Wright City, MO 63390



## GOLD BRUSH NOMINATION FORM

**Form must be signed to validate nomination**

**Each chapter member is allowed to nominate only one candidate, which will be kept confidential.**

**My nominee for the Gold Brush Award in 2015 is:**

Reason (state briefly—specific Chapter and/or community service).

Signature \_\_\_\_\_ Phone No: \_\_\_\_\_

**CHECK IT OUT...**



## Call for Art

### **Street Festival and Juried Art Event**

The Crossroads Arts Council in conjunction with the Wentzville Downtown Business Association and City of Wentzville would like to invite all fine artists to participate in the upcoming Wentzville Octoberfest Wine & Art Festival scheduled for October 17, 2015 from 11 am to 7 pm in the streets of Wentzville's historic Village Center.

The Octoberfest is a premier one day event which will offer many local breweries and wineries the opportunity to offer sampling of their products under the protection of a large tasting tent. Along with the enjoyment of fine wine, an adjacent area of juried artists from around the Midwest will offer fine art for sale at many price points. Local food trucks along with a stage to provide musical background for a day of fun and enjoyment will be located in the Village Center area of Wentzville, alongside the Historical Society's caboose.

Cash prizes will be awarded for the winning art pieces in the amount of \$250 for Best in Show, \$200 for 2nd place, and \$150 for 3rd place. A trophy will be awarded to the winner of the People's Choice award.

#### **BOOTH FEES:**

\$50 before and on 8-15-15, \$45 if a member of Crossroads Arts Council

\$80 after 8-15-15, \$75 if a member of Crossroads Arts Council

\$35 jury fee: may submit up to three images for judging

A limited number of artists will be selected to participate. The art vendor application, rules and policies for participation in the street festival and juried art event can be found on our [website](#). Inquiries and applications should be emailed to: [crossroadsartscouncil@gmail.com](mailto:crossroadsartscouncil@gmail.com)

Please feel free to pass along this information. (Sent to Editor by Linda Wilmas)

# **GATEWAY DECORATIVE ARTISTS MEMBERSHIP FORM**

**Membership in the Chapter is OPEN ONLY to persons who are dues-paying members of SDP**

Name \_\_\_\_\_ New Member \_\_\_\_\_ Renewal \_\_\_\_\_

Address \_\_\_\_\_

City \_\_\_\_\_ State \_\_\_\_\_ Zip \_\_\_\_\_

Phone \_\_\_\_\_ Email \_\_\_\_\_

Birth Date \_\_\_\_\_ SDP Membership No. \_\_\_\_\_ (include copy of SDP Card)

**PLEASE CHECK HERE IF YOU DO NOT WANT YOUR PICTURE PRINTED IN OUR NEWSLETTER, FACEBOOK, WEB SITE OR OTHER PUBLICATIONS.**

Check all that apply:

Individual Member \_\_\_\_\_ Teacher \_\_\_\_\_ Business Member \_\_\_\_\_ Name of Shop \_\_\_\_\_

Certification: MDA \_\_\_\_\_ CDA \_\_\_\_\_ TDA \_\_\_\_\_

Preferred Painting Medium: Oil \_\_\_\_\_ Acrylic \_\_\_\_\_ Watercolor \_\_\_\_\_ Other \_\_\_\_\_

What year did you start painting? \_\_\_\_\_

Favorite Artists: \_\_\_\_\_

**ANNUAL DUES ARE \$20, PAYABLE BY DECEMBER 1**

**Please make check payable to Gateway Decorative Artists;  
Mail to Jean Lindsey, 140 So. St. Charles St., Florissant, MO 63031**



GATEWAY GAZETTE  
Marilyn Hartnett, Newsletter Editor  
Contact Information:  
[www.newsletter@gatewaydecorativeartists.com](http://www.newsletter@gatewaydecorativeartists.com)  
(636) 332-0061



# Society of Decorative Painters

## 2016 MEMBERSHIP FORM

### 1 MEMBER OPTIONS PLEASE CHECK APPROPRIATE BOXES.

FOR FASTER SERVICE, pay online at DECORATIVEPAINTERS.ORG.

#### UNITED STATES

- \$50 INDIVIDUAL (\$55 after 12/1/15)
- \$80 BUSINESS (\$85 after 12/1/15)
- \$30 HOUSEHOLD (\$35 after 12/1/15)\*
- \$30 TRIAL\*\*
- \$15 STUDENT (\$20 after 12/1/15)\*\*\*

#### CANADA (U.S. FUNDS)

- \$70 INDIVIDUAL (\$75 after 12/1/15)
- \$50 ONLINE INDIVIDUAL (\$55 after 12/1/15) †
- \$100 BUSINESS (\$105 after 12/1/15)
- \$80 ONLINE BUSINESS (\$85 after 12/1/15) †
- \$30 HOUSEHOLD (\$35 after 12/1/15)\*
- \$30 TRIAL\*\*
- \$15 STUDENT (\$20 after 12/1/15)\*\*\*

#### INTERNATIONAL (U.S. FUNDS)

- \$80 INDIVIDUAL (\$85 after 12/1/15)
- \$50 ONLINE INDIVIDUAL (\$55 after 12/1/15) †
- \$110 BUSINESS (\$115 after 12/1/15)
- \$80 ONLINE BUSINESS (\$85 after 12/1/15) †
- \$30 HOUSEHOLD (\$35 after 12/1/15)\*
- \$30 TRIAL\*\*
- \$15 STUDENT (\$20 after 12/1/15)\*\*\*

CHECK IF 2017 MEMBERSHIP PAYMENT IS INCLUDED.

\* **HOUSEHOLD MEMBERSHIP:** An additional member sharing the same address as an Individual or Business member. Member online only. No printed *Decorative Painter* magazines will be mailed to you.

\*\* **TRIAL MEMBERSHIP:** A one-year membership for a new member or anyone who has not been a member since 2013. Member online only. No printed *Decorative Painter* magazines will be mailed to you.

\*\*\* **STUDENT MEMBERSHIP:** Students enrolled full-time in an accredited educational institution, including accredited home-schoolers. Member online only. No printed *Decorative Painter* magazines will be mailed to you. ATTACH DOCUMENTATION OF ENROLLMENT.

† **ONLINE CANADA AND INTERNATIONAL MEMBERSHIPS:** Will be able to view *The Decorative Painters* magazine, online only. No printed *Decorative Painter* magazines will be mailed.

### 2 ONLINE 2016 BUSINESS DIRECTORY

**BUSINESS MEMBERS:** Check all boxes that apply. FREE LISTINGS with your business membership.

Visit DECORATIVEPAINTERS.ORG/PRODDetail.PHP?PROD=BUSLIST to submit up to one-hundred-word description of your business.

- AUTHOR
- DISTRIBUTOR/WHOLESALER
- MANUFACTURER/IMPORTER
- RETAILER
- TRAVEL-TEACHER
- DESIGNS AND/OR PAINTING SKILLS FOR HIRE
- HOME STUDIO
- PUBLISHER
- TEACHER

### 3 MEMBER PROFILE (Please Print)

NAME \_\_\_\_\_ MEMBER NO. (if Renewal) \_\_\_\_\_

HOUSEHOLD MEMBER NAME \_\_\_\_\_ MEMBER NO. (if Renewal) \_\_\_\_\_

BUSINESS NAME \_\_\_\_\_

MAILING ADDRESS \_\_\_\_\_

CITY \_\_\_\_\_ STATE/PROV. \_\_\_\_\_ ZIP/POSTAL CODE \_\_\_\_\_ COUNTRY \_\_\_\_\_

EMAIL \_\_\_\_\_ WEBSITE \_\_\_\_\_

HOME PHONE ( ) \_\_\_\_\_ CELL PHONE ( ) \_\_\_\_\_ FAX ( ) \_\_\_\_\_

RECRUITED BY \_\_\_\_\_ MEMBERSHIP # \_\_\_\_\_

I WOULD LIKE TO DONATE \$5 \$10 OR \$ \_\_\_\_\_ to the SDP Foundation

I WOULD LIKE TO DONATE \$5 \$10 \$25 \$50 OR \$ \_\_\_\_\_ to the Society of Decorative Painters.

### 4 PAYMENT INFORMATION CHECK OR MONEY ORDER IN U.S. FUNDS ONLY; FOR CREDIT CARD PAYMENTS, THE CVV CODE AND THE BILLING ADDRESS SHOULD

BE SUBMITTED WITH PAYMENT, IF DIFFERENT FROM MAILING ADDRESS ABOVE. IF RENEWING MEMBERSHIP, PLEASE PAY ONLINE AT DECORATIVEPAINTERS.ORG.

Check  Money Order CREDIT CARD:  DISCOVER  MASTERCARD  VISA TOTAL \_\_\_\_\_

CARD NUMBER \_\_\_\_\_ EXPIRATION DATE \_\_\_\_\_

SIGNATURE \_\_\_\_\_

YES! This is a gift membership from \_\_\_\_\_ MEMBER NO. \_\_\_\_\_

MAKE CHECKS PAYABLE TO: SDP FAX MEMBERSHIP FORM TO: (316) 269-9191

### IMPORTANT

Membership year is Jan. 1 to Dec. 31, 2016. You may join any time of the year and receive all applicable SDP benefits and have access to *The Decorative Painter* magazine for that year. An additional \$5 late fee will be required for payments postmarked after December 1, 2015. This fee does not apply to new members.

If you join or renew by December 1, 2015, your 2016 membership card will arrive with Issue No. 1, 2016, of *The Decorative Painter*.

393 N. McLean Blvd., Wichita, KS 67203-5968 • (316) 269-9300 Fax: (316) 269-9191 • DECORATIVEPAINTERS.ORG

MEMBERSHIP FORM\_2016\_0715