



Gateway Gazette

www.gatewaydecorativeartists.com
www.facebook.com/GatewayDecorativeArtists
Volume 43 Issue 3 April 2016

CONTENTS

- Calendar 2
- President’s Message 3
- Vice President Report 5
- Program Chair Report 6
- Minutes 7-8
- Turning Point/Pet Rescue 9
- Memory Box 10
- Refreshments 11
- Membership 12
- Birthdays/Thinking of You 12
- Bob Evans Flyer 13
- Chapter Membership Form ... 14
- SDP Membership 15
- Treasurer’s Report 16

Gateway Chapter Meeting

April 17, 2016

**Maryland Heights Community Center
2344 McKelvey Road, Maryland Heights, MO**

314-738-2599

Meeting Starts at 1:00 p.m.

Doors Open at 12:00 noon

Directions from I-270

“It’s Spring”

Refreshments

Milly Johnson

Joan Love

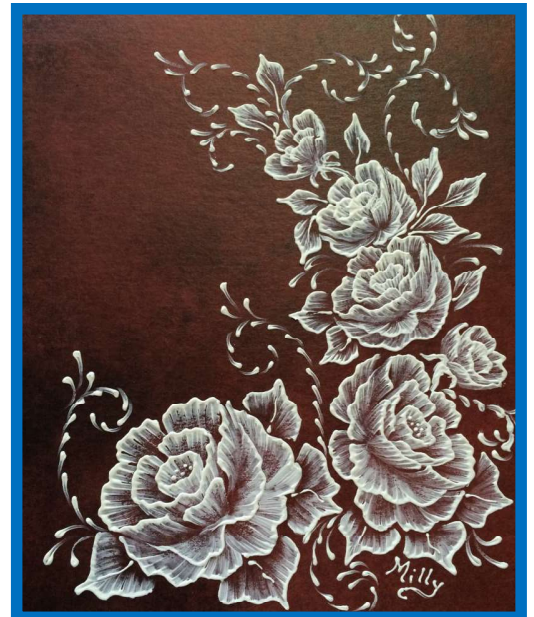
Mary Jo Kumer

Liz McClintock

Linda Nelson

Maureen Wasserman

Cheryll Wilburn



Milly Johnson will be teaching Margot Clark’s technique using the product MUDD. All participants will need to bring their acrylic supplies plus a liner brush. If you have the product MUDD you will be charged \$2 for the surface. If you use Milly’s MUDD plus the surface the charge will be \$5.

BOARD MEMBERS

President

Gloria Falk 636-561-6623
 president@gatewaydecorativeartists.com

Vice President

Ellen Rohne 636-240-1684
 vicepresident@gatewaydecorativeartists.com

Program Chair

Barb Ogden 636-928-5503
 program@gatewaydecorativeartists.com

Membership Secretary & Publicity

Jean Lindsey 314-921-0425
 membership@gatewaydecorativeartists.com

Recording Secretary

Anna Mathieu 314-994-1134
 secretary@gatewaydecorativeartists.com

Treasurer

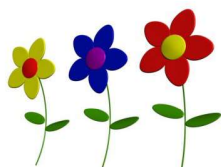
Donna Wessel 314-428-8226
 treasurer@gatewaydecorativeartists.com

Newsletter Editor

Marilyn Hartnett 636-332-0061
 newsletter@gatewaydecorativeartists.com

Social Media Coordinator

Michelle Senn 314-910-2716



Check List for Meeting:

- Refreshments, if you are on the committee.
- Pet Rescue Donations
- Turning Point Donations
- Painted Memory Boxes.
- Painting Supplies

CALENDAR OF EVENTS

April 5	Memory Box Paint In
April 17	General Meeting
May 3	Memory Box Paint In
May 15	Board Meeting
May 21-23	Mark Polomchak
June 7	Memory Box Paint In
June 6-11	SDP Convention
June 12	General Meeting
July 12	Memory Box Paint In
August 2	Memory Box Paint In
August 8-13	Hoot
August 21	Board Meeting
September 11	General Meeting
September 13	Memory Box Paint In
September 23-25	Retreat
October 4	Memory Box Paint In
October 16	Board Meeting
November 13	General Meeting
December 4	Christmas Meeting
December 6	Memory Box Paint In

Area Representatives

South County	Joan Love	314-842-7288
North County	Jean Lindsey	314-921-0425
West County	Maureen Wasserman	636-517-1721

If you have information to pass on to the Chapter such as news of an illness, congratulations, etc., please contact an area rep or your Membership Chairman.

Standing Committee Chairs

Hospitality	Liz McClintock & Linda Nelson
Gold Brush Award	Marilyn Hartnett
Librarian	Barb Ogden
Historian	Marilyn Hartnett
Nominating Comm.	Cheryll Wilburn
Publicity	Michelle Senn
Ways and Means	Gloria Falk
Parliamentarian	Liz McClintock

Special Committee Chairs

Audit Committee	Janie Parisi, Barb Ogden, Gloria Falk
Christmas Party	Barb Ogden
Memory Box Program	Gloria Falk and Mary Jo Kumer
Social Media Coordinator	Michelle Senn
Webmaster	Josée Laferriere

PRESIDENT—GLORIA FALK

Dear Painting Friends,



We had a great meeting in March (make-up for our February Snow cancellation). We certainly had a lot going on. Debbie Christenson brought in a stash of acrylic paints to give to whomever wanted it. A lady, Mary Quiroz, had contacted me and wanted to bring to our meeting, stuff from her studio to allow everyone to take what they wanted. What a haul some of you made. She had some nice things, wood, patterns, paint, etc. It was very kind of her to think of Gateway. Now ladies, surprise us and paint some of those items and share with us at a meeting. Don't let it just gather dust in your place. I was tempted to look, but knowing I have lots of stuff here that needs to be painted...I held back, well at least for a little while. That lap desk kept staring at me. Yes, I finally gave in. No one else seemed interested. Besides the painting on it was 'almost' done. <SMILE>. When done, I plan to send it on to a young lady to use in her room.

We also managed to get some Memory Boxes painted at this meeting. Thank you to those of you who stayed to paint. These are now varnished and ready to be shipped out.

Mary Jo was having a meal with her husband at Bob Evans in O'Fallon and noticed that they had fund raiser flyers for the MS organization.. She inquired about doing something like this for the MB program. Bob Evans Corporation has approved this and we will have April 21st as our fundraiser day. This will cover the Wentzville, O'Fallon, Mid Rivers, Zumbel Rd., Bridgeton and Florissant stores from 6 a.m. to 9 p.m. On that day bring the flyer with you (YOU MUST BRING THE FLYER), and 15% of your total bill will be donated to the MB Program. What a great opportunity to help with the shipping costs of these boxes. Please run copies of the flyer and give to your friends and family. Mary Jo and I have made up display boards for each of the stores and are adding a box to the display, to help advertise this event. After the MS event you will see our flyers set out at each of these stores.

My sincerest thanks to everyone who brought items for the animal rescue to the meeting. I delivered the stuff on Monday to Annie (the young lady in charge of the rescue group) started to cry. She was so thankful for our support. They need so much right now to help out with the new batches of kitties and puppies happening, and they have had a lot of surrenders of older animals. Owners have passed on and no one to take care of their animals. What a sad situation.

We had a nice turnout at our last Memory Box Paint-in. We got several boxes completed and some of the ladies brought in extra boxes they had done at home...they have all been sent off to three locations. Gals you need to join us for these, we have a fun time and you get a pattern, instructions and a photo of the project. I know how busy life can get, so put it on your calendar, the FIRST Tuesday of most months (except Nov.) at the Lindell Bank in St. Peters on Mexico Road. It is very easy to find.

Those of you who have attended seminars with Mark Polomchak before know we all have a great time. Be sure to sign up with Barb. It's opportunity to open yourself up to yet another great learning experience. If you have never tried watercolors before, this is the class for you. Mark is very good at taking every step slow and easy, giving you plenty of time to work on your piece. You WILL go home with a finished piece, AND the nice advantage with Mark is that he brings his framing crew with him – so your piece can be ready to hang on the wall when you get home. Wonderful.

Ellen has been hard at work planning our Fall Retreat. We voted on and learned which projects would be taught at the Retreat this fall. The chosen projects will be on display at the April 17th meeting and you can sign up right away. We will also be selecting the Make-it/Take-it projects at this meeting. Consider submitting one. If you don't teach regularly, this is the time to get your feet wet, so to speak. Small projects, good pricing and a fun time to be had by all.

Remember, Chapters are the essential element in spreading the word of our great art form, they give us the opportunity to develop friendships and link us together in our common interests. They also give us a chance to share our ideas, and light the path to our artistic education through seminars, sharing workshops, demonstrations and our retreat. Bring a guest to the next meeting and encourage them to join our club, so they too can enjoy these wonderful learning experiences. Milly Johnson will be showing us how to work with Margot Clark's Mudd.

I will be looking forward to seeing you at the April meeting.

Paint with a Happy



Gloria Falk, TDA
Chapter President

VICE PRESIDENT — ELLEN ROHNE

“A PIRATE’S BOOTIE”

Sept. 23-25, 2016

TODD HALL Retreat Center
320 Todd Center Dr. Columbia, IL

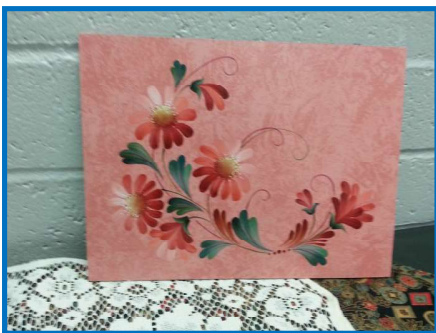
What a long winter this has been. I am so glad spring is here. Time to start getting our Retreat plans finalized. Our plans so far include 4, four-hour classes to be held on Friday evening, Saturday morning, Saturday afternoon and Sunday morning. These projects were selected at the last meeting. We will have 3, one-hour MITI’s on Saturday evening. Six meals will be served in the dining room.

I can’t wait to see the MITI projects that will be submitted at the April meeting. We will be choosing 3 projects at this month’s meeting.

If you were not at the last meeting and would like to work on one of the committees, it’s not too late to sign up. I will pass out the sign-up sheet again at this meeting or you can contact the Chairperson directly.

Gloria Falk, name tags- Barb Ogden, decorations and Donna Wessel, class room set up.

The four class projects were selected at the last meeting. It was a tough decision all the projects were beautiful. The projects chosen were:



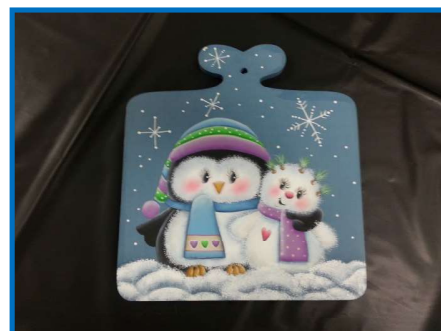
“Daisies “— Mary Jo Kumer, Acrylics



“Chalk Board with Fruit” Debbie Christensen,
Colored Pencil and Acrylics



“We Believe” Barb Ogden, Acrylics



“Waiting for Winter” Donna Wessel, Acrylics

Teachers don’t forget your class projects for viewing. Don’t forget to bring your MITI projects for selection.

I hope to see all of you in April. If you have any questions about Retreat, please feel free to contact me.

Thanks for all of your help and support. Ellen Rohne, CDA

PROGRAM — BARB OGDEN

Happy Spring Everyone!

I can hardly believe Easter has come and gone. The first three months of the year have flown by.

Just a reminder.....if you are going to sign up for the watercolor seminar with Mark Polomchak I need to know as soon as possible. I need to pass along the information to Mark so he can prep for the classes.

Our program after our meeting will be learning how to use Margot Clark's Mudd. Milly Johnson will be teaching this class so check out the newsletter for the cost and supply list.

Hope to see you all April 17, Barb

Don't be disappointed! Reserve your space now. A one day deposit is required. See me at the meeting.

MARK POLOMCHAK



Seminar dates are May 21-23, 2016 (Sat, Sun, Mon)
Holiday Inn Express.



Gateway Decorative Artists Program Registration Form

Program _____ Date _____ Date _____ Date _____

Class Fee _____ Surface/Supply Fee _____

Name _____ Phone _____

Address _____ City/Zip _____

Email _____ Amount _____ Cash _____ Check _____

CHECK HERE IF YOU AGREE TO HAVING YOUR PICTURE IN OUR PUBLICATIONS OR FACEBOOK _____

Send to Barbara Ogden, 1424 Cave Springs Estate Drive, St. Peters, MO 63376 For Questions call: 636-928-5503

or email: program@gatewaydecorativeartists.com

MINUTES — ANNA MATHIEU

Gateway Decorative Artists - General Meeting

March 20, 2016

The meeting was called to order by President, Gloria Falk, at 1:06 pm. Other board members present included Ellen Rohne, Barb Ogden, Donna Wessel, Marilyn Hartnett, Jean Lindsey, and Anna Mathieu.

President, Gloria Falk, welcomed the members and Joan Love gave the Invocation.

President: Gloria Falk

Gloria asked if there were any changes or additions to the November minutes. There were no corrections or additions to the November minutes, and they were approved.

Members were asked if there were any changes or additions to the December minutes. There were no corrections or additions to the minutes, and the minutes were approved.

The Treasurer's Report was sent via email to all members. Gloria asked if there were any questions about the report. There were no questions. The Treasurer's Report will be filed as published.

Gloria presented and distributed Chapter Service Charms to those members providing services during 2015.

Gloria informed us that SDP sold their building, but they are still occupying the space there. The new owners are renovating the building.

Gloria reported that Kay Vuichard passed away on February 2, 2016. Donna has sent in a donation to the DAC in her memory.

There is a new painting magazine being introduced. The name of it is "Painting World." There will be 7 issues each year and the cost will be \$29.95 for a year's subscription.

Absentee Ballots for SDP elections need to be sent in by May 1, 2016.

Our **Gold Brush Award** winner was Marilyn Hartnett, and she was recognized during the meeting.

There was discussion about participation in the Chapter's Facebook page. Michelle Senn is our Social Media Coordinator. She was unable to attend the meeting. Gloria encourages us to join Facebook, Like, and Share information on our timelines. You can post chapter news, your pieces of artwork (finished or in progress), upcoming events, classes, seminars, and teacher information. Further discussion will be held when we meet with Michelle Senn.

Vice President – Ellen Rohne

Retreat information: Ellen presented 6 projects to be considered for the Chapter Retreat. Voting will take place after the meeting and the winning projects will be announced.

We need **Make It-Take It** teachers for the retreat. Teachers will be paid \$25.00 for each project. Selections will be presented at the April meeting and selections will take place at that time.

Retreat booklets will be available at the end of May and Class Registration will be held at the June meeting. The registration fee will be \$35.00, and class fees are \$10.00 per class. Payment will be accepted at the June meeting. Sign-up for Make It/Take It classes will be accepted at the June meeting. Materials fee for the teachers will be paid to the teachers at the retreat. A sign-up sheet was passed around for committee helpers.

The retreat will be held at Todd Hall, phone (618) 281-8180 for reservations. We have a block of rooms set aside for our event. The cost for a double rooms with 2 people is \$40.00 a person, 1 person is \$62.00 per night. We will be there for 2 nights. A meal plan has been set up for 6 meals with the cost of \$54.00.

MINUTES (Continued)

Program Chair – Barb Ogden

A questionnaire was sent around the room to find out what members would like to do/see/paint in the coming year.

Mark Polomchak will be teaching classes on May 21, 22, 23. Registration fee is \$75.00 and classes are \$75.00 per class. Mark will provide a palette for a nominal fee. The classes will be held at the Holiday Inn at Earth City

Meeting locations for this year will change due to the construction of a new Rec. Center. The April meeting will be in the current building. The June meeting will **probably** be in the current building but future meetings may be in a different location.

Gloria will be teaching a memory box pattern today after the meeting.

Memory Box Program – Mary Jo Kumer

So far this year we have painted 100 Memory Boxes. We have painted 8580 so far over the years. Donna Wessel will be teaching the next paint in on April 5. There are several months that need teachers. Volunteer teachers are always welcome.

Bob Evans will contribute to our Memory Box program by. They will donate 15% of members purchase toward our charity. The date will be April 21, 2016 and it will include 6 different locations. Gloria will email details.

Membership Chair – Jean Lindsey

As of today, we have 37 members. At today's meeting we have 19 members and 1 guest. Let her know if you are interested in painting pins this year, or having a Secret Pal. Donna shared some of the gifts she received from her Secret Pal. She encouraged others to join in with the fun by being a Secret Pal.

Directories are available today, see Cheryll Wilburn.

Door prizes were won today by Lovella, Mari, Delia and Donna.

Newsletter – Marilyn Hartnett

Members are encouraged to share projects or ideas on a brag page in the newsletter. Deadline for the next newsletter is March 31, 2016.

Treasurer – Donna Wessel

There were a number of free item on Donna's table, puzzles, game board, and small blocks of wood. Donna also has pins, patches and Books for sale. Mary Quiroz has donated many items today. There is a book of Memory Box patterns at the back of the room. Take them they are free. They were donated by Kay Vuichard, who passed away February 2, 2016.

Refreshment Committee – Linda Nelson and Liz McClintock

Members that brought refreshments today include: Gloria Falk, Marilyn Hartnett, Mary Jo Kumer, Jean Lindsey, Anna Mathieu, Barb Ogden, Ellen Rohne, and Donna Wessel. There is a signup sheet for refreshment. Please choose a month and sign up. Refreshments are supposed to be light finger foods like chips, dips, veggies, fruit, cookies, brownies, etc.

New Business

Cindy has resigned from the DP Museum and Betsy Thomas has taken her place.

A motion was made to adjourn by Mary Jo Kumer and seconded by Donna Wessel.

Respectfully submitted, Anna Mathieu, Recording Secretary.

TURNING POINT

The shelter really has a need for paper towels for bathrooms and kitchens. Also needed are newborn diaper and size one diapers, shampoo, conditioner, and also dish detergent. Everything is appreciated.



There is always a need for staples like:

Toilet paper and paper towels

Hygiene products like:

Toothpaste and toothbrushes

Shampoo and conditioners



Ellen, the Director of Turning Point has also indicated that it would be helpful to have:

Cake mixes, icing and decorations, to help celebrate birthdays.

Clear Storage tubs, all sizes to organize their donations

Reams of Copy paper

If you have any questions please feel free to contact me, Cheryll Wilburn, at 314-640-8759.



PET RESCUE WISH LIST



Small Pet Beds Litter Pet Toys Monetary Donations

Rescues often require cats and dogs to be disease tested prior to leaving the shelter so they could also use monetary donations or sponsors for that. Each test is from \$15-24 dollars but this adds up fast with multiple transfers.

Spring has arrived and new puppies and kittens are popping up all over the place. This rescue group does what they can through the many volunteers to supply the needs to help out God's creatures. Can we try once again to bring at least ONE of the items listed above to the next meeting? We could really make an impact on their wish list. They ask that these items be new, or barely used and clean.

MEMORY BOX PAINTERS HARD AT WORK — photos by Gloria Falk



Cheryll Wilburn
Sue Dietrich

Anna Mathieu, Ginger German
Marilyn McDonald, Marilyn Todd



Linda Nelson
Mary Jo Kumer
Barb Ogden



Joan Love
Nancy Falk
Margaret VonKaenel

REFRESHMENT COMMITTEE — LINDA NELSON

HELP PLEASE

Liz McClintock and I want to thank the members of the board for providing refreshments for everyone at the last meeting. Also, thanks to Mary Jo Kumer for the drinks and Gloria's Wednesday girls for the pretty table decorations, and to Cheryl, Sarah and Maureen for volunteering.

Volunteers are needed to bring a plate or dish filled with yummy refreshments for the upcoming meetings.

We also need someone to be in charge of coordinating the menu, as well as someone, or a small group of six volunteers to create table decorations for each meeting. Please give me a call if you are available for bringing refreshments or centerpieces.

Thank you all in advance for doing your part. **If we don't get any volunteers, Liz and I will clean out our refrigerators the night before the meetings and have pot-luck and surprises for the decorations.**



GET CREATIVE AND SHOW
US YOUR TALENT FOR
CENTERPIECES.

NOT ROCKET SCIENCE
LADIES, JUST SOMETHING
TO SNACK ON.



MEMBERSHIP — Jean Lindsey

We will be having the pin exchange again this year.

Please add: **Carol Rufkahr** to your directory.

9823 Sappington

ST. Louis, Mo. 63128

carufkahr@yahoo.com

314-843-8822

Birthday 8-Aug

Please send me the name of any one who is sick or has had a death in the family and I will get a card out to them.



Janie Parisi—April 15

Linda Lewis—April 30

Gloria Falk—May 3

Peggy Araki—May 4

Patricia Manlove—May 11



Our sympathy to Gloria Falk on the sudden loss of her brother the end of March.

In our prayers, Michelle Senn is having health issues which have kept her in and out of medical care the past few weeks with swollen legs.

CHECK OUT THESE SITES FOR USEFUL TIPS

www.lindacoulter.com

creativeartslifestyle.com

creativeartslifestyle.com/.../bobbie-campbell.html

cherirol.com

polomchak.com

margotclark.com

FUND RAISING

Bob Evans is sponsoring a fundraiser for the Memory Box Program, that Gateway supports. Please print out this attached flyer...hand them out to family and friends and take it with you on April 21 to any of the Bob Evans restaurants listed on the flyer. When you pay your bill, surrender the flyer and the Memory Box Program will receive 15% of the total of your check.

Thank you for helping out on this fundraiser. Go to the restaurant that day, anytime between 6 a.m. and 9 p.m. And you can go multiple times that day.....Breakfast, lunch and supper. Thanks again

**Bob Evans®
COMMUNITY
FUNDRAISER**

Dine to make a difference

**Gateway
Decorative Artists
Memory Box Program**

**Thursday, April 21, 2016
6:00 A.M. - 9:00 P.M.**

Also:
Westerville
Wentzville
Midland
Zumbach
Bridgeton
Lorissant

Bob Evans will donate 15% of sales when you present this flyer* to

Bob Evans®

**8670 Veterans Memorial Parkway in O'Fallon
www.BobEvans.com/BEkind**

*Flyer must be presented at time of check out. #359

GATEWAY DECORATIVE ARTISTS MEMBERSHIP FORM

Membership in the Chapter is OPEN ONLY to persons who are dues-paying members of SDP

ANNUAL DUES ARE \$20, PAYABLE BY DECEMBER 1

Please make check payable to Gateway Decorative Artists;

Mail to Jean Lindsey, 140 So. St. Charles St., Florissant, MO 63031

Name _____ New Member _____ Renewal _____

Address _____

City _____ State _____ Zip _____

Phone _____ Email _____

Birth Date _____ SDP Membership No. _____ (include copy of SDP Card)

PLEASE CHECK HERE IF YOU DO NOT WANT YOUR PICTURE PRINTED IN OUR NEWSLETTER, FACEBOOK, WEB SITE OR OTHER PUBLICATIONS .

Check all that apply:

Individual Member _____ Teacher _____ Business Member _____ Name of Shop _____

Certification: MDA _____ CDA _____ TDA _____

Preferred Painting Medium: Oil _____ Acrylic _____ Watercolor _____ Other _____

What year did you start painting? _____

Favorite Artists: _____



GATEWAY GAZETTE
Marilyn Hartnett, Newsletter Editor
Contact Information:
Www.newsletter@gatewaydecorativeartists.com
(636) 332-0061



Society of Decorative Painters

2016 MEMBERSHIP FORM

1 MEMBER OPTIONS PLEASE CHECK APPROPRIATE BOXES.

FOR FASTER SERVICE, pay online at DECORATIVEPAINTERS.ORG.

UNITED STATES

- \$50 INDIVIDUAL (\$55 after 12/1/15)
- \$80 BUSINESS (\$85 after 12/1/15)
- \$30 HOUSEHOLD (\$35 after 12/1/15)*
- \$30 TRIAL**
- \$15 STUDENT (\$20 after 12/1/15)***

CANADA (U.S. FUNDS)

- \$70 INDIVIDUAL (\$75 after 12/1/15)
- \$50 ONLINE INDIVIDUAL (\$55 after 12/1/15) †
- \$100 BUSINESS (\$105 after 12/1/15)
- \$80 ONLINE BUSINESS (\$85 after 12/1/15) †
- \$30 HOUSEHOLD (\$35 after 12/1/15)*
- \$30 TRIAL**
- \$15 STUDENT (\$20 after 12/1/15)***

INTERNATIONAL (U.S. FUNDS)

- \$80 INDIVIDUAL (\$85 after 12/1/15)
- \$50 ONLINE INDIVIDUAL (\$55 after 12/1/15) †
- \$110 BUSINESS (\$115 after 12/1/15)
- \$80 ONLINE BUSINESS (\$85 after 12/1/15) †
- \$30 HOUSEHOLD (\$35 after 12/1/15)*
- \$30 TRIAL**
- \$15 STUDENT (\$20 after 12/1/15)***

CHECK IF 2017 MEMBERSHIP PAYMENT IS INCLUDED.

* **HOUSEHOLD MEMBERSHIP:** An additional member sharing the same address as an Individual or Business member. Member online only. No printed *Decorative Painter* magazines will be mailed to you.

** **TRIAL MEMBERSHIP:** A one-year membership for a new member or anyone who has not been a member since 2013. Member online only. No printed *Decorative Painter* magazines will be mailed to you.

*** **STUDENT MEMBERSHIP:** Students enrolled full-time in an accredited educational institution, including accredited home-schoolers. Member online only. No printed *Decorative Painter* magazines will be mailed to you. ATTACH DOCUMENTATION OF ENROLLMENT.

† **ONLINE CANADA AND INTERNATIONAL MEMBERSHIPS:** Will be able to view *The Decorative Painters* magazine, online only. No printed *Decorative Painter* magazines will be mailed.

2 ONLINE 2016 BUSINESS DIRECTORY

BUSINESS MEMBERS: Check all boxes that apply. FREE LISTINGS with your business membership.

Visit DECORATIVEPAINTERS.ORG/PRODDetail.PHP?PROD=BUSLIST to submit up to one-hundred-word description of your business.

- AUTHOR
- DISTRIBUTOR/WHOLESALE
- MANUFACTURER/IMPORTER
- RETAILER
- TRAVEL-TEACHER
- DESIGNS AND/OR PAINTING SKILLS FOR HIRE
- HOME STUDIO
- PUBLISHER
- TEACHER

3 MEMBER PROFILE (Please Print)

NAME _____ MEMBER NO. (If Renewal) _____

HOUSEHOLD MEMBER NAME _____ MEMBER NO*(If Renewal) _____

BUSINESS NAME _____

MAILING ADDRESS _____

CITY _____ STATE/PROV. _____ ZIP/POSTAL CODE _____ COUNTRY _____

EMAIL _____ WEBSITE _____

HOME PHONE (____) _____ CELL PHONE (____) _____ FAX (____) _____

RECRUITED BY _____ MEMBERSHIP # _____

I WOULD LIKE TO DONATE \$5 \$10 OR \$ _____ to the SDP Foundation

I WOULD LIKE TO DONATE \$5 \$10 \$25 \$50 OR \$ _____ to the Society of Decorative Painters.

4 PAYMENT INFORMATION CHECK OR MONEY ORDER IN U.S. FUNDS ONLY; FOR CREDIT CARD PAYMENTS, THE CVV CODE AND THE BILLING ADDRESS SHOULD BE SUBMITTED WITH PAYMENT, IF DIFFERENT FROM MAILING ADDRESS ABOVE. IF RENEWING MEMBERSHIP, PLEASE PAY ONLINE AT DECORATIVEPAINTERS.ORG.

Check Money Order CREDIT CARD: DISCOVER MASTERCARD VISA TOTAL _____

CARD NUMBER _____ EXPIRATION DATE _____

SIGNATURE _____

YES! This is a gift membership from _____ MEMBER NO. _____

MAKE CHECKS PAYABLE TO: SDP FAX MEMBERSHIP FORM TO: (316) 269-9191

IMPORTANT

Membership year is Jan. 1 to Dec. 31, 2016. You may join any time of the year and receive all applicable SDP benefits and have access to *The Decorative Painter* magazine for that year. An additional \$5 late fee will be required for payments postmarked after December. 1, 2015. This fee does not apply to new members.

If you join or renew by December 1, 2015, your 2016 membership card will arrive with Issue No. 1, 2016, of *The Decorative Painter*.

393 N. McLean Blvd., Wichita, KS 67203-5968 • (316) 269-9300 Fax: (316) 269-9191 • DECORATIVEPAINTERS.ORG

MEMBERSHIP FORM_2016_0715