



# Gateway Gazette

www.gatewaydecorativeartists.com  
 www.facebook.com/GatewayDecorativeArtists  
 Volume 44 Issue 3 JUNE 2017

## CONTENTS

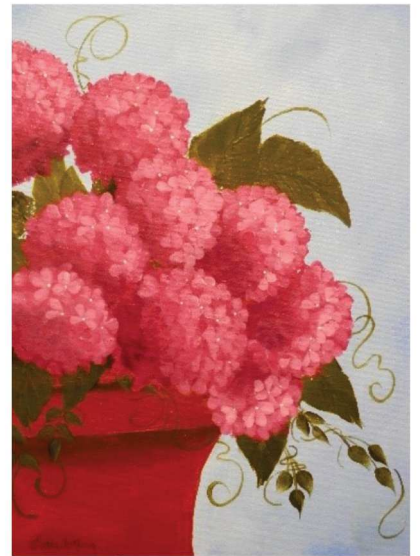
Calendar, Chapter Info. ....	2
President's Message .....	3
Vice President .....	4
Program Chair .....	4
Minutes.....	5-6
Thank you from Janice Miller .....	7
Membership .....	8
Pet Rescue .....	8
Turning Point.....	9
Refreshments.....	9
Hints on Cleaning Brushes.....	10-11
Birthdays/Thinking of You .....	12
Chapter Membership Form.....	13
SDP Membership Form .....	14
Treasurer's Report.....	15

## Gateway Chapter Meeting June 11, 2017

### The Checkered Cottage

Meeting Starts at 1:00 p.m.

Doors Open at 12:00 noon



**JUNE 11  
MEETING  
PAINT-IN  
TAUGHT BY  
GLORIA FALK**

Supplies to bring:

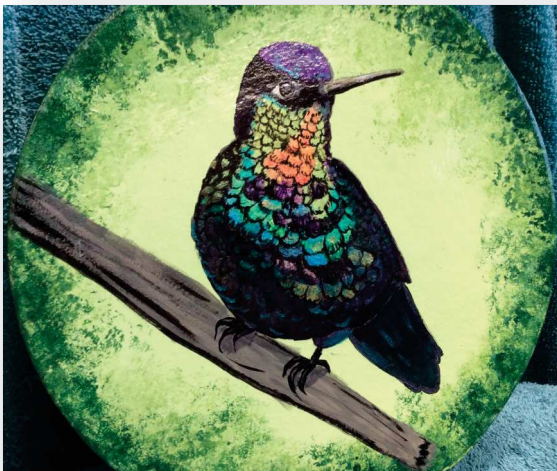
12 x 16" canvas

Palette paper, Paper Towels, Water container

Transfer paper and the following brushes:

3/4" - 1" flat; 1/2" Angle; #10 filbert; and a #1 liner brush.

No additional cost.



*Memory Box Paint-June 6  
Taught by Ginger German*

## BOARD MEMBERS

### President

**Gloria Falk** 636-561-6623  
arttouch@aol.com

### Vice President

**Milly Johnson** 573-231-4279  
milypaints4U@yahoo.com

### Program Chair

**Barb Ogden** 314-607-6946  
collectincountry@earthlink.net

### Membership Secretary & Publicity

**Jean Lindsey** 314-921-0425  
jeanlindsey@att.net

### Recording Secretary

**Delia Larkins** 618-624-8601  
Dlarkins@Ameren.com

### Treasurer

**Donna Wessel** 314-428-8226  
toletinker@att.net

### Newsletter Editor

**Marilyn Hartnett** 636-357-1038  
marilynhartnett@centurytel.net

## Area Representatives

South County	Joan Love	314-842-7288
North County	Jean Lindsey	314-921-0425
West County	Maureen Wasserman	636-517-1721

*If you have information to pass on to the Chapter such as news of an illness, congratulations, etc., please contact an area rep or your Membership Chairman.*

## Standing Committee Chairs

Hospitality.....	Liz McClintock & Linda Nelson
Gold Brush Award.....	Linda Nelson
Librarian.....	Barb Ogden
Historian.....	Marilyn Hartnett
Nominating Comm.....	Ellen Rohne
Ways and Means.....	Gloria Falk
Parliamentarian.....	Liz McClintock

## Special Committee Chairs

Audit Committee .....	Janie Parisi, Barb Ogden, Gloria Falk
Christmas Party .....	Barb Ogden
Memory Box Program .....	Gloria Falk and Mary Jo Kumer
Webmaster.....	Josée Laferriere

## CALENDAR FOR 2017

June 2	Barb Ogden Sharing Workshop
June 6	Memory Box Paint In
June 11	General Meeting
August 5	Board Meeting
August 14-19	HOOT
August 20	Newsletter Deadline
September 10	General Meeting
October 7	Board Meeting
October 13	Donna Wessel Sharing Workshop
October 24	Newsletter Deadline
November 12	General Meeting
December 3	Christmas Meeting



## JUNE REFRESHMENTS

Gloria Falk  
Debbie Finklang  
Barb Ogden  
Mary Jo Kumer  
Jean Lindsey  
Linda Nelson

Maureen Wasserman

## TABLE DECORATIONS

Mary Jo Kumer, Barb Ogden,  
Donna Wessel, Maureen  
Wasserman

## NEWS FROM OUR PRESIDENT—GLORIA FALK


Well most of us have heard by now the dues to SDP has gone up immediately to \$60. I am hoping this won't affect our membership. Prices are going up on everything these days – whether it's giving us smaller sizes of products but charging the same price or instead of buying one and getting one free it's now buy two and get one free. It is frustrating to try and keep ahead of these things. Put your change in a jar...clean out your purse, once a week and collect those loose coins that drop out of sight. Maybe we could eat at home a night or two and right there we would save more than the \$10 extra our dues is costing. If this is going to impact your membership to Gateway, I want to hear from you. We have a great group and I would hate to see any of you leave.

I hope no one suffered any from the flooding that happened in our area. I can only imagine the kind of havoc this played on those affected by all of the flooding we had in May. If you know of someone in the chapter that has been hit hard by this, please let us know, so we can help in some way.

I am looking forward to seeing everyone at the next meeting, on June 11. I will be teaching a canvas of Hydrangea's. I hope you will stay afterwards and join us while we paint this project. The supplies you need to bring to the meeting are listed elsewhere in this newsletter. I will furnish the paints needed for this project and you will get a packet when you stay and paint, there will be no charge. Bring a friend with you. Introduce them to Gateway by having them take part in what we have to offer.

Those of you who missed the Janice Miller seminar really missed a good time. She is a very sharing individual and all of the projects turned out fantastic. Thanks Barb, for getting that one together for us. Those of you who attended...bring your projects for show 'n tell.

For those of you who were not in attendance at the April meeting, a motion was made and discussion was held on eliminating term limits from our by-laws starting with this year's election. Below, the motion is listed in full. The April meeting was the first reading of this motion, it now needs to be published in 2 newsletters and then voted on in Nov. Come prepared to discuss this motion at the June meeting.

Continue to paint with a Happy  !!  
Gloria

### **Article VI - #3**

Mary Jo's motion (Joan Love's Second) to remove term limits and to change our current Article VI #3 which now reads: No officer may hold the same office for more than (2) consecutive full terms. This will begin with the 2013 election. Replacing the last two sentences with the following wording:

**Beginning with the 2017 election, officers will no longer be subject to term limits**

## VICE PRESIDENT — MILLY JOHNSON

*I am working on next year's retreat and will keep you posted along the way. Milly*

## PROGRAM CHAIR — BARB OGDEN

Thank you to all who participated in the Janice Miller Seminar. It was a great time and the projects I have seen all look great!

My sharing workshop is June 2 and I would like to thank those of you who are taking the seminar in advance. I am looking forward to teaching this piece and having fun with all of you.

There will be a sample of Donna Wessel's Sharing Workshop piece at the seminar table. Please come by to take a look and register. The registration fee is \$15. We will be painting this piece at Lindell Bank on October 13.

Gloria Falk is teaching a canvas of hydrangeas for our program. Please join her for a great summer piece.

We are changing up our table center pieces this meeting. Instead of giving them away we will be auctioning them off and the proceeds will go to the Memory Box program. Bring your money or your checkbook !

Hope to see you at the meeting, Barb

### SHARING WORKSHOP JUNE 2

>

These are the pencils we will be using.:

Prisma brand >black, dark green, dark brown, poppy

>

If you do not have these pencils I can order for you or if you have another brand you may convert the colors to your brand.

>

I will provide all other supplies.

>

Please bring your acrylic supplies, pencil sharpener and a kneadable eraser.

>

>Let me know as soon as possible about your pencils so I can get them ordered.





## MINUTES — DELIA LARKINS

### Gateway Decorative Artists Meeting Minutes April 2<sup>nd</sup>, 2017 Checked Cottage in Kirkwood, MO

Meeting was called to order at 1:02 PM by President Gloria Falk.

Officer's in attendance: Marilyn Hartnett, Milly Johnson, Delia Larkins, Jean Lindsey, Barb Ogden and Donna Wessel.

Minutes were printed in the newsletter. These were approved as printed and will be filed.

Treasurer's Report was printed in the newsletter. These were approved as printed and will be filed.

Gloria asked the members to go to Gateway's Facebook page and "like" us and then "share" us with others.

Teachers please add pictures of any classes you will be teaching. Members please post pictures of what you're painting.

Be sure to give credit to the designer when posting. Do not share any jokes or political matter, keep the subject of your posts towards painting.

Gloria passed out the remaining Chapter Service Awards for 2016, with the help of Mary Jo Kumer.

Donna Wessel provided a breakdown of the dues income and we are spending more than we are taking in.

The Board has decided to discontinue the Chapter Service Awards. We do have 2 service charm holders for sale.

A call was made for volunteers for Gold Brush Award Committee – Linda Nelson is the Chair. Deb Finklang and Maureen Wasserman have volunteered to be part of the committee.

Gloria announced that since there is no job for Milly to take care of this year, as Retreats are now being planned every other year, Milly will take care of Publicity for Jean Lindsey. The next retreat will be in 2018.

Janice Miller seminar is April 6<sup>th</sup>, 7<sup>th</sup> and 8<sup>th</sup>. Barb mentioned that Janice will be bringing a lot of product with her. Members who are not attending the seminar are to feel free to come and shop.

Barb Ogden's Sharing Workshop will be a Erika Joanne design on a cigar box. The date for that is June 2, and it will be done in acrylics and colored pencil at Lindell Bank in St. Peters.

Donna Wessel's Sharing Workshop will be a multimedia project and held on Oct. 13 at Lindell Bank in St. Peters.

Today's project will be taught by Donna Wessel – Susan Kelly Design Easter Rabbit.

Mary Jo Kumer reported they finished 65 boxes for the Memory box program so far this year.

In April, Donna will be teaching the "Too Cute Bear" design, previously taught.

In May, Mary Jo will be teaching the "Flower and bumble bee" design, previously taught.

If you have your pattern from when each of these were taught before, please bring them with you.

In June, Ginger will be doing a Hummingbird design. We need 3 more teachers for the months of July, Sept. and Dec.

Jean Lindsey reported there were 19 members present of 31 members and 2 guests – former member, Lou Ann Duryea and Barb's daughter, Ginny Schramm.

Door Prizes were won by Marilyn Hartnett, Milly Johnson, Mary Jo Kumer, Joan Love, Joan Reilly and Linda Young.

Jean Lindsey was selling 4 Paint Holders at \$5 each. Money from the sale of those will go to the Memory Box Program.

## MINUTES (Continued)

Delia Larkins made the Table favors for today's meeting – which was Mug Rugs with the Chapter Logo. The following members each won one: Jeanne Abraham, Debbie Christenson, Gloria Falk, Mary Jo Kumer, Linda Nelson, Joan Reilly, Maureen Wasserman, and Cheryl Wilburn.

Some members had email problems and did not receive their newsletters. Marilyn stated that if they have issues with not receiving their newsletter to call her on her cell phone: 636-357-1038. This number is not given to everyone. Do not call the number in the directory, as she is receiving a lot of robo calls and does not answer that phone often.

There will be a fee for mailing newsletters \$2.

Cost per meeting at Checkered Flag is \$3 per person. The Feb. meeting rental was \$72 (we overpaid by \$9) and it is \$60 for April.  $\$60 - \$9 = \$51$  due today.

Linda Nelson – Gave thanks to the food committee, table favors and teacher for the day. Linda gave a thank you gift to the teacher today, Donna Wessel, and one to Delia Larkins for doing those great table favors.

Mary Jo Kumer – Brought up the topic of removing term limits - Article VI – #3  
“No officer may hold the same office for more than (2) consecutive full terms. This will begin with the 2013 election”. She recommended replacing the last two sentences with the following wording:  
Beginning with the 2017 election, officers will no longer be subject to term limits.  
Discussion incurred. Gloria asked for a motion.

Motion: Made by: Mary Jo Kumer    Seconded by: Joan Love  
To eliminate term limits – Article VI - #3 and word it as:  
Beginning with the 2017 election, officers will no longer be subject to term limits.  
This is first reading of the motion. It needs to be published in two newsletters then voted on.

Show and Tell:

Barb showed a design that she is teaching on Thursday nights, April 20 and 27<sup>th</sup> at Checkered Cottage – check their web site for more information. Projects she will be teaching are a Kelly Hoernig piece, and a Maxine Thomas Summer/Fall pattern. This will be 4 weeks in May, from 6-9PM on Thursdays. Cost will be on the web by end of the week. Projects are done on MDF board.

Any other Announcements?

Milly Johnson – Opened “Abby Rose Gallery” on Main Street in Hannibal Mo. Closed Sun thru Tuesday  
30% commission if it's a Gateway member. She will donate to Memory Box Program.

A motion was made to adjourn the Meeting – motioned by Mary Jo Kumer and seconded by Liz McClintock

Respectfully Submitted,  
Delia Larkins  
Recording Secretary

Dear Gateway Decorative Artists,

Would like all too know & thoroughly  
enjoyed teaching and painting to your Chapter.  
Your hospitality will not be forgotten.

Your group is special and  
may you continue to build  
friendships with sharing the  
Love of Decorative Painting.

Always, My Best

Jamie Miller



IN ALL THINGS OF NATURE  
THERE IS SOMETHING OF THE MARVELOUS.

~ ARISTOTLE

## MEMBERSHIP — Jean Lindsey

HELLO,

ITS TIME FOR THE JUNE MEETING AND I JUST WANTED TO TELL EVERYONE THAT WE WILL BE EXCHANGING HAND PAINTED PINS AGAIN IN SEPTEMBER. THERE IS NO THEME THIS TIME, WHAT EVERY YOU WANT TO PAINT.

WRAP AND SIGN YOUR PIN.

IF YOU KNOW OF SOMEONE THAT NEEDS A CARD LET ME KNOW.

JEAN, MEMBERSHIP



## **PET RESCUE WISH LIST**

### **Annie Austin Animal Rescue Group**

Ladies, I am asking that we make an effort to provide some of these items to the rescue group this month. This group does so much to help out animals that have been set to be euthanized because owners are no longer able to care for them, for one reason or another. They are in need of any new:

### **Kitty Litter, Cat and Dog food**



**Thank you for anything you can do to help out, including cash donations if you prefer.**



## TURNING POINT



There is always a need for staples like:

Toilet paper and paper towels

**Hygiene products like:**

Toothpaste and toothbrushes

Shampoo and conditioners



Ellen, the Director of Turning Point has also indicated that it would be helpful to have:

- Baby Wipes
- **Pedialyte**
- Cleaning Supplies - they need to be fragrance-free or free and clear
- Laundry detergent that is fragrance-free and/or free and clear.



If you have any questions please feel free to contact me, Cheryl Wilburn, at 314-640-8759.

## REFRESHMENT COMMITTEE—LINDA NELSON & LIZ MCCLINTOCK

Our June meeting theme is “Lady Bugs in the Summer Sunshine.” Table decorations are being created by four of our very talented artists.

For September the theme is “Pumpkin Time.” Table decorations are being painted and/or crafted and will be a big surprise to everyone. We need 5 volunteers to bring refreshments for this meeting.

In November the theme is “Autumn Leaves” and the centerpieces for the table are ready. However, we do need two more volunteers to bring refreshments.

Please let us know when you are able to contribute refreshments so we can get you signed up.

Respectfully, The Sunshine Girls!





## HINTS ON CLEANING BRUSHES

Let me start out by saying we invest a lot of money in our brushes, so it is up to us to properly clean them after each use and while using them. No need to buy cheap brushes – trust me, your painting will only be as good as your brushes are. Why spend your precious time dealing with a cheap brush when you could be spending your time enjoying your painting process??

Nylon/manmade fiber brushes:

Rinse your brushes in water, lay them flat on a paper towel. Do this frequently while you're painting. DO NOT allow paint to go over the ferrule (metal portion of the brush created to hold the hairs to the handle) – if this happens, rinse the brush out and reload. DO NOT allow your brushes to sit in water for any length of time and especially DO NOT let the water come up on the handle of the brush. A lot of our brushes today have plastic handles and the water won't hurt them, but if they are comprised of painted wood – it will make the paint peel and the handle will split on you.

When you are finished with your work for the day. Rinse the brush in clean water and continue until you see no color coming off on to the paper towel you are using to dry the brush. Do not POUNCE your brush up and down to clean it....swish it back n forth (yes it's OK to rake across the ribs in the water tub-actually this helps to pull the paint out of the brush). Now that you see no color coming out of the brush, you're still not done. Take a bar of IVORY soap and a wet brush and work it back n forth on the soap...again no pouncing...the movement is back n forth (like a pendulum swings) on the soap. With your fingers, work the soap into the hairs of the brush-do you see color? If you do see color, rinse the brush and start over on the bar of IVORY soap. At my studio sink I have Dawn dish soap and I put a drop of that on to my little heart-shaped scrubber – (available from Artists Club and other places) and I work the brush back n forth on the scrubber until no color comes out of the brush. If there is a lot of color coming from the brush, I would get out the rubbing alcohol and rinse the brush in that a few times – this will also pull the paint out of the brush. **(NOTE: I WOULD NOT USE RUBBING ALCOHOL ON NATURAL HAIR BRUSHES** – such as Sables – this would be very hard on those hairs and would allow a breaking of the hairs). Of course, I don't use NATURAL hair brushes in Acrylics anyway – but some may not pay close attention to what their brush is made up of. You must choose the right brush for the right medium. Manmade brushes are good for acrylic paint.

After the rubbing alcohol – go back to the IVORY soap –or – Dawn dish soap and work that into the brush – rinse the brush and the soap and repeat until there is no color coming from the brush. At last leave the clean soap in the brush (this acts like a sizing for the brush to keep the hairs from going haywire on you) , lay it flat to dry and store it upright until you use it again. Prior to using, you must rinse thoroughly in water. Make sure you get all of the soap out of the brush.

To clean your mop brushes and scumbling brushes you use the same method of rinsing, soap, rinsing method. Do not leave soap in these brushes. These are meant to have the liquid spun out of them. SPINNING: put the brush handle in the palm of your hand – put your other hand palm over that and roll the brush back n forth between your hands quickly.

The same procedure is used to clean your oil brushes. NO ALCOHOL though. After rinsing your brush in odorless thinner, I was taught to use Grumbacher's Brush n Hand cleaner early on in my painting career. I was told it had lanolin in it and that it was good for the brush. At that time I was using natural hair brushes like Sables, etc. It was very kind to my brushes and my hands and it still is. It is difficult to locate Grumbacher's Brush n Hand cleaner any more, Viking use to carry it. Karl Meshbach-Heinz has a homemade brush cleaner that he produces. It looks very similar to Grumbacher's. Whether it is made up of the same materials or not, I do not know. But it works. So does JoSonja's brush cleaner. The only difference is, they do not recommend leaving their cleaners in the brushes. So you would have to rinse it out completely in water, dry it out on a towel and then allow the brush to dry thoroughly while lying flat on a towel before storing. NOTE: you can use this method to clean the stiff bristle brushes used in oil painting also.

Cleaning Watercolor brushes is quite easy....just rinse thoroughly in water. Use soap to pull any stubborn paint out of the brush, rinse again, wipe on the towel, SPIN the brush dry and then store flat until dry.

Good luck with keeping your brushes in optimum shape. If you have any questions at all please give me a call or write me an email.

Gloria Falk, TDA  
arttouch@aol.com  
636-561-6623



# happy birthday

Linda Nelson—June 6  
 Linda Young—June 11  
 Delia Larkins—June 14  
 Ingrid Oertli—June 22  
 Marilyn Todd—July 14  
 Jeanne Abraham—August 2  
 Liz McClintock—August 6  
 Carol Ruffrahr—August 8

*Consistent and durable joy is generated when we pursue a passion that is strong enough to carry us past pain, something so meaningful and absorbing that we can ignore unhappy circumstances.*

~~Thomas Kinkade

### Check List for Meeting:

- Refreshments, if you are on the committee.
- Pet Rescue Donations
- Turning Point Donations
- Painted Memory Boxes.

## **NEXT NEWSLETTER DEADLINE — AUGUST 20, 2017**

### **Gateway Decorative Artists Program Registration Form**

Program \_\_\_\_\_ Date \_\_\_\_\_ Date \_\_\_\_\_ Date \_\_\_\_\_  
 Class Fee \_\_\_\_\_ Surface/Supply Fee \_\_\_\_\_  
 Name \_\_\_\_\_ Phone \_\_\_\_\_  
 Address \_\_\_\_\_ City/Zip \_\_\_\_\_  
 Email \_\_\_\_\_ Amount \_\_\_\_\_ Cash \_\_\_\_\_ Check \_\_\_\_\_

**CHECK HERE IF YOU AGREE TO HAVING YOUR PICTURE IN OUR PUBLICATIONS OR FACEBOOK** \_\_\_\_\_

Send to Barbara Ogden, 1424 Cave Springs Estate Drive, St. Peters, MO 63376 For Questions call: 314-607-6946

or email: [program@gatewaydecorativeartists.com](mailto:program@gatewaydecorativeartists.com)



# GATEWAY DECORATIVE ARTISTS MEMBERSHIP FORM

Membership in the Chapter is OPEN ONLY to persons who are dues-paying members of SDP

**ANNUAL DUES ARE \$20, PAYABLE BY DECEMBER 1**

**Please make check payable to Gateway Decorative Artists;  
Mail to Jean Lindsey, 140 So. St. Charles St., Florissant, MO 63031**

Name \_\_\_\_\_ New Member \_\_\_\_\_ Renewal \_\_\_\_\_

Address \_\_\_\_\_

City \_\_\_\_\_ State \_\_\_\_\_ Zip \_\_\_\_\_

Phone \_\_\_\_\_ Email \_\_\_\_\_

Birth Date \_\_\_\_\_ SDP Membership No. \_\_\_\_\_ (include copy of SDP Card)

**PLEASE CHECK HERE IF YOU DO NOT WANT YOUR PICTURE PRINTED IN OUR  
NEWSLETTER, FACEBOOK, WEB SITE OR OTHER PUBLICATIONS .**

Check all that apply:

Individual Member \_\_\_\_\_ Teacher \_\_\_\_\_ Business Member \_\_\_\_\_ Name of Shop \_\_\_\_\_

Certification: MDA \_\_\_\_\_ CDA \_\_\_\_\_ TDA \_\_\_\_\_

Preferred Painting Medium: Oil \_\_\_\_\_ Acrylic \_\_\_\_\_ Watercolor \_\_\_\_\_ Other \_\_\_\_\_

What year did you start painting? \_\_\_\_\_

Favorite Artists: \_\_\_\_\_





# Society of Decorative Painters

1220 E. First St., Wichita, KS 67214-3907 | (316) 269-9300 Fax: (316) 269-9191 | DECORATIVEPAINTERS.ORG

## 2017 MEMBERSHIP FORM

### 1 MEMBER OPTIONS PLEASE CHECK APPROPRIATE BOXES.

FOR FASTER SERVICE, pay online at DECORATIVEPAINTERS.ORG.

#### UNITED STATES

- \$50 INDIVIDUAL
- \$80 BUSINESS
- \$30 HOUSEHOLD\*
- \$30 TRIAL\*\*
- \$15 STUDENT\*\*\*

#### CANADA (U.S. FUNDS)

- \$70 INDIVIDUAL
- \$50 ONLINE INDIVIDUAL†
- \$100 BUSINESS
- \$80 ONLINE BUSINESS †
- \$30 HOUSEHOLD\*
- \$30 TRIAL\*\*
- \$15 STUDENT\*\*\*

#### INTERNATIONAL (U.S. FUNDS)

- \$80 INDIVIDUAL
- \$50 ONLINE INDIVIDUAL†
- \$110 BUSINESS
- \$80 ONLINE BUSINESS†
- \$30 HOUSEHOLD\*
- \$30 TRIAL\*\*
- \$15 STUDENT\*\*\*

CHECK IF 2018 MEMBERSHIP PAYMENT IS INCLUDED.

\* **HOUSEHOLD MEMBERSHIP:** An additional member sharing the same address as an Individual or Business member. Member online only. No printed *Decorative Painter* magazines will be mailed to you.

\*\* **TRIAL MEMBERSHIP:** A one-year membership for a new member or anyone who has not been a member since 2014. Member online only. No printed *Decorative Painter* magazines will be mailed to you.

\*\*\* **STUDENT MEMBERSHIP:** Students enrolled full-time in an accredited educational institution, including accredited home-schoolers. Member online only. No printed *Decorative Painter* magazines will be mailed to you. ATTACH DOCUMENTATION OF ENROLLMENT.

† **ONLINE CANADA AND INTERNATIONAL MEMBERSHIPS:** Will be able to view *The Decorative Painters* magazine, online only. No printed *Decorative Painter* magazines will be mailed.

### 2 NEW! 2016 PRO-RATED MEMBERSHIP OPTION

\$30\* PRO-RATE (Valid only between September 1 and December 31, 2016)

Not a current member? For only \$30, you can join SDP for the remainder of 2016 and take advantage of all our membership benefits, including receiving a print copy of the Issue 4 of this year's *The Decorative Painter* magazine, access to previous issues online, exclusive discounts, involvement in your local Chapter, and more!\*

\*The 2016 Pro-rated Membership option is only available to people who are joining the Individual or Business Membership categories for 2017.

### 3 ONLINE 2017 BUSINESS DIRECTORY

**BUSINESS MEMBERS:** Check all boxes that apply. FREE LISTINGS with your business membership.

Visit DECORATIVEPAINTERS.ORG/PRODDetail.PHP?PROD=BUSLIST to submit up to one-hundred-word description of your business.

- AUTHOR
- DISTRIBUTOR/WHOLESALE
- MANUFACTURER/IMPORTER
- RETAILER
- TRAVEL-TEACHER
- DESIGNS AND/OR PAINTING SKILLS FOR HIRE
- HOME STUDIO
- PUBLISHER
- TEACHER

### 4 MEMBER PROFILE (Please Print)

NAME \_\_\_\_\_ MEMBER NO. (If Renewal) \_\_\_\_\_

HOUSEHOLD MEMBER NAME \_\_\_\_\_ MEMBER NO. (If Renewal) \_\_\_\_\_

BUSINESS NAME \_\_\_\_\_

MAILING ADDRESS \_\_\_\_\_

CITY \_\_\_\_\_ STATE/PROV. \_\_\_\_\_ ZIP/POSTAL CODE \_\_\_\_\_ COUNTRY \_\_\_\_\_

EMAIL \_\_\_\_\_ WEBSITE \_\_\_\_\_

HOME PHONE (\_\_\_\_) \_\_\_\_\_ CELL PHONE (\_\_\_\_) \_\_\_\_\_ FAX (\_\_\_\_) \_\_\_\_\_

RECRUITED BY \_\_\_\_\_ MEMBERSHIP # \_\_\_\_\_

I WOULD LIKE TO DONATE \$5 \$10 \$25 \$50 \$100 \$250 \$500 \$1,000 OR \$\_\_\_\_\_ to the SDP Foundation.

I WOULD LIKE TO DONATE \$5 \$10 \$25 \$50 \$100 \$250 \$500 \$1,000 OR \$\_\_\_\_\_ to the Society of Decorative Painters.

Make a tax deductible donation to support the Society of Decorative Painters or the SDP Foundation. SDP is a 501 (c) (3) nonprofit organization.

### 5 PAYMENT INFORMATION CHECK OR MONEY ORDER IN U.S. FUNDS ONLY; FOR CREDIT CARD PAYMENTS, THE CVV CODE AND THE BILLING ADDRESS SHOULD BE SUBMITTED WITH PAYMENT. IF DIFFERENT FROM MAILING ADDRESS ABOVE. IF RENEWING MEMBERSHIP, PLEASE PAY ONLINE AT DECORATIVEPAINTERS.ORG.

Check  Money Order CREDIT CARD:  AMERICAN EXPRESS  DISCOVER  MASTERCARD  VISA TOTAL \_\_\_\_\_

CARD NUMBER \_\_\_\_\_ EXPIRATION DATE \_\_\_\_\_

SIGNATURE \_\_\_\_\_ CVC CODE \_\_\_\_\_

YES! This is a gift membership from \_\_\_\_\_ MEMBER NO. \_\_\_\_\_

MAKE CHECKS PAYABLE TO: SDP send to: Society of Decorative Painters, Attn. Membership, 1220 E. First St., Wichita, KS 67214-3907

Or FAX MEMBERSHIP FORM TO: (316) 269-9191

.MEMBERSHIP FORM\_2017\_0825

**NOTE: THE DUES FOR SDP MEMBERSHIP HAVE GONE UP AND FOR 2018 WILL BE \$60 FOR REGULAR MEMBERSHIP. WATCH FOR THE NEXT ISSUE OF THE SDP DECORATIVE PAINTER FOR MEMBERSHIP RENEWAL FORM.**

It is also easy to sign up / renew online:

<http://www.decorativepainters.org/proddetail.php?prod=Member17>